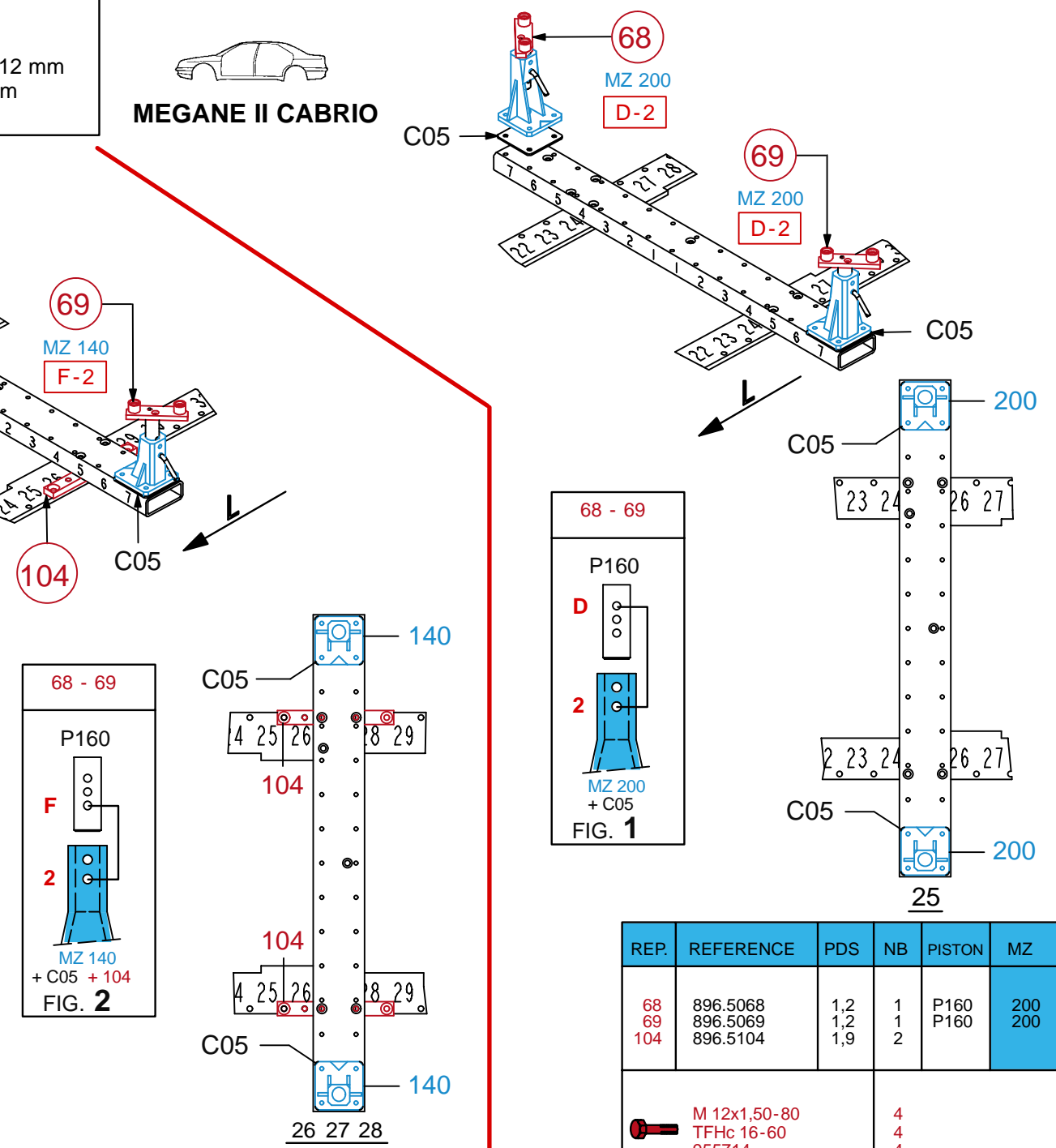
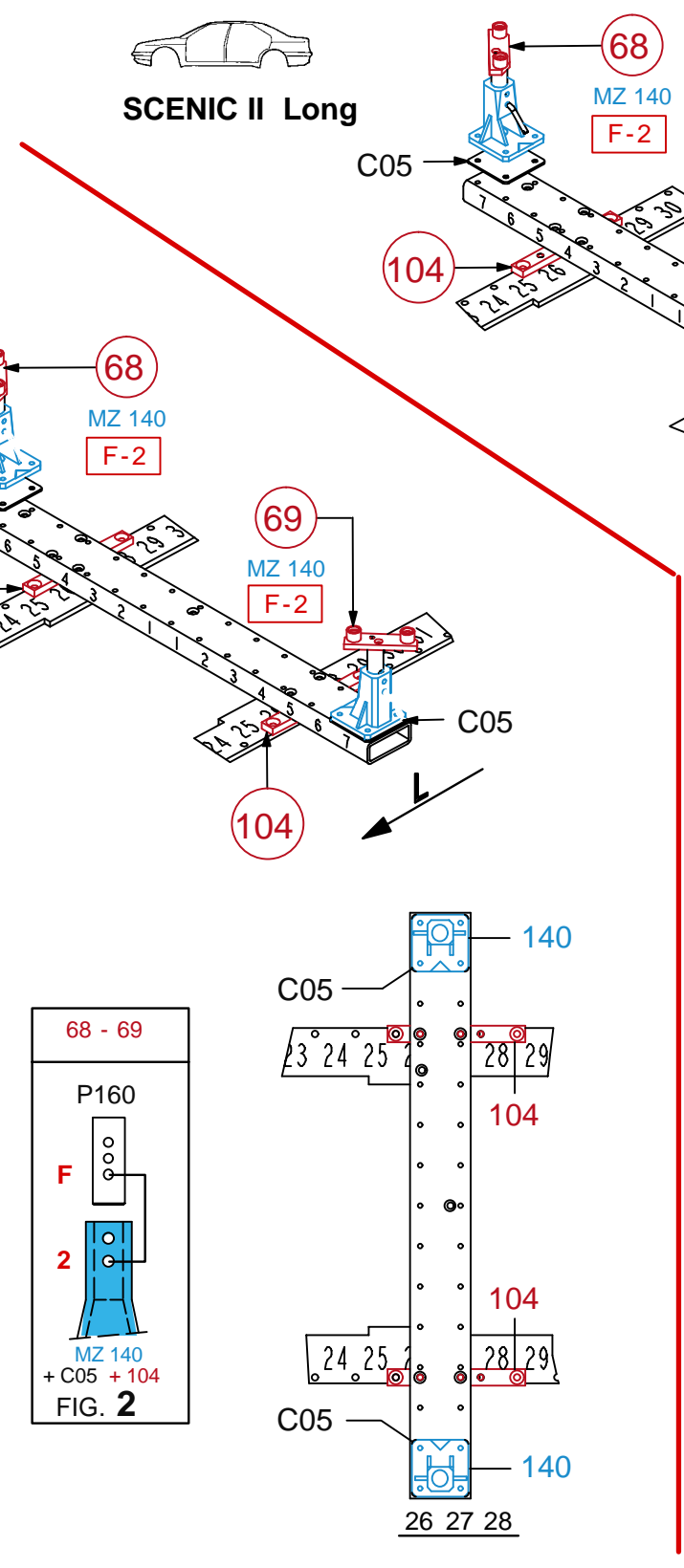
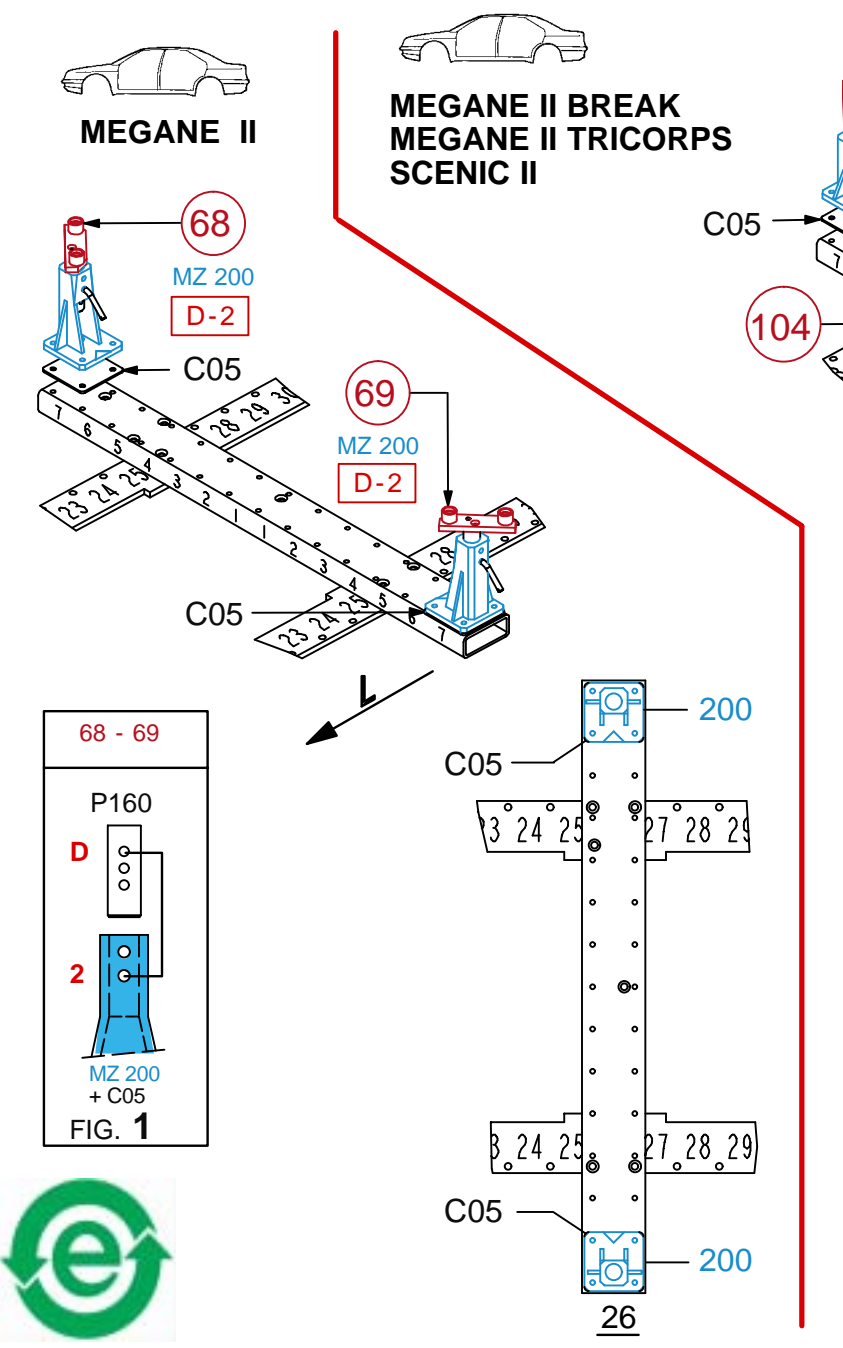
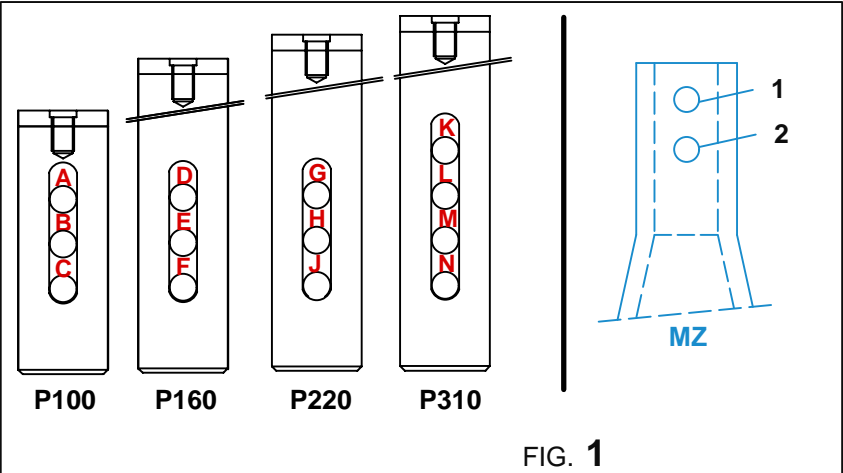


- FIXATION DE L'ESSIEU ARRIERE VIS Ø 12 mm
- FIXING OF THE REAR AXLE SCREWS Ø 12 mm
- BEFESTIGUNG DER HINTERACHSE SCHRAUBEN Ø 12 mm
- FISSAGGIO DELL'ASSALE POSTERIORE VITI Ø 12 mm
- FIJACION DEL EJE TRASERO TORNILLOS Ø 12 mm

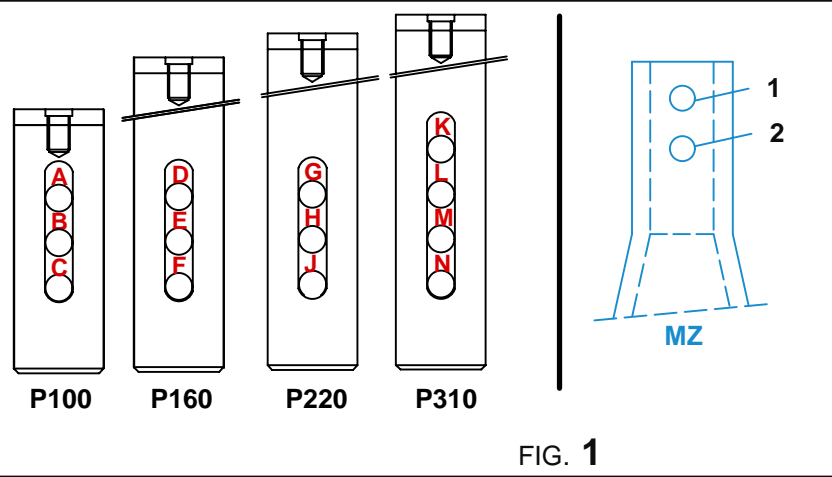


REP.	REFERENCE	PDS	NB	PISTON	MZ
68	896.5068	1,2	1	P160	200
69	896.5069	1,2	1	P160	200
104	896.5104	1,9	2		
M 12x1,50-80 TFHc 16-60 955714			4		
complément au complementary set to complemento al zusatz zu					896.300 896.309 896.308 896.307
896.505					
8 Kg	05.02.2009	427-D-30V			
896.505-RVA3-1					00

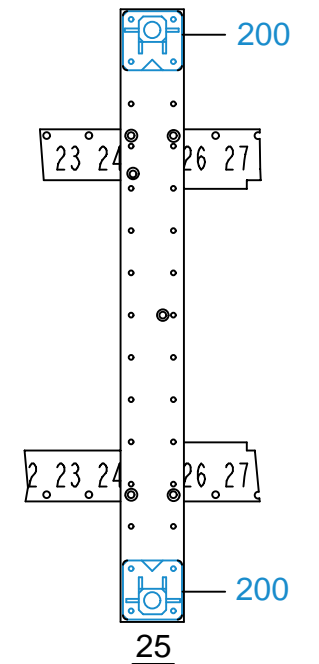
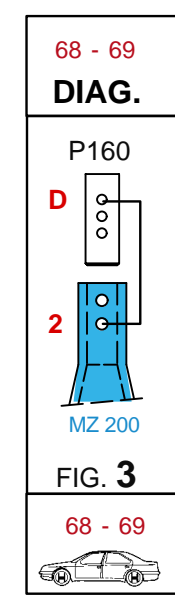
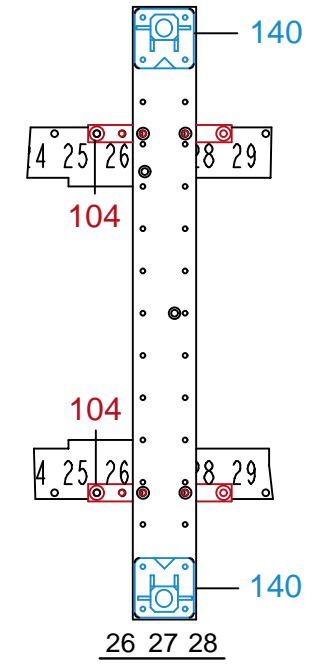
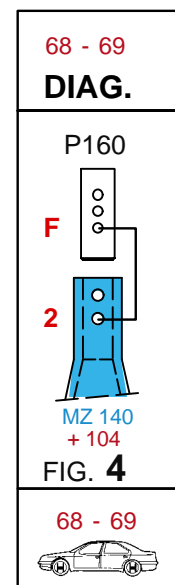
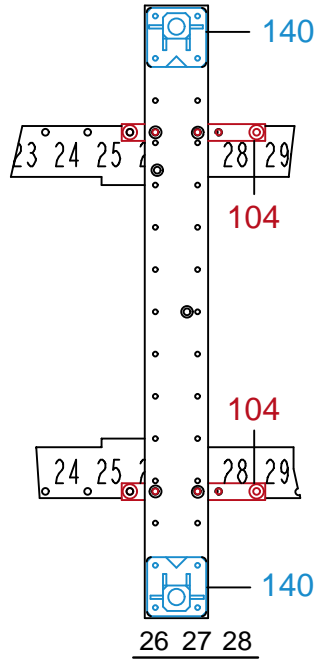
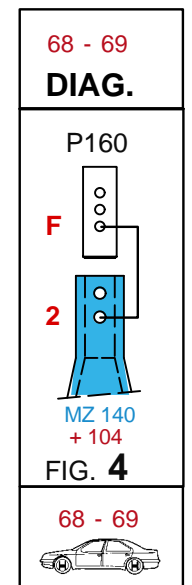
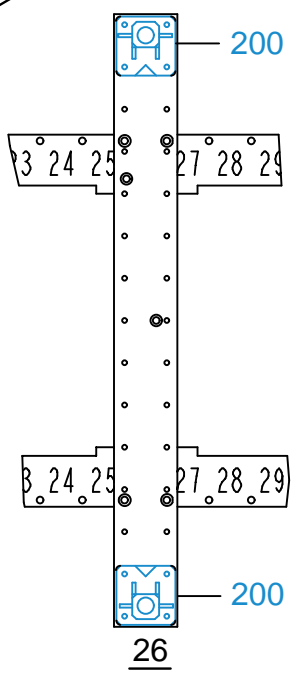
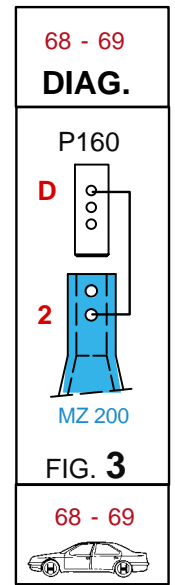
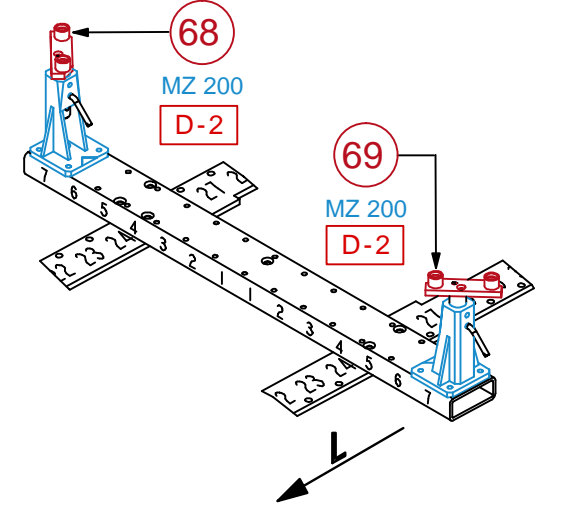
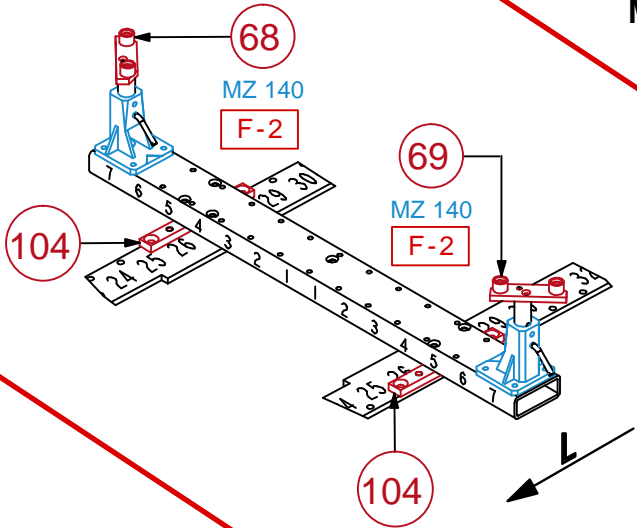
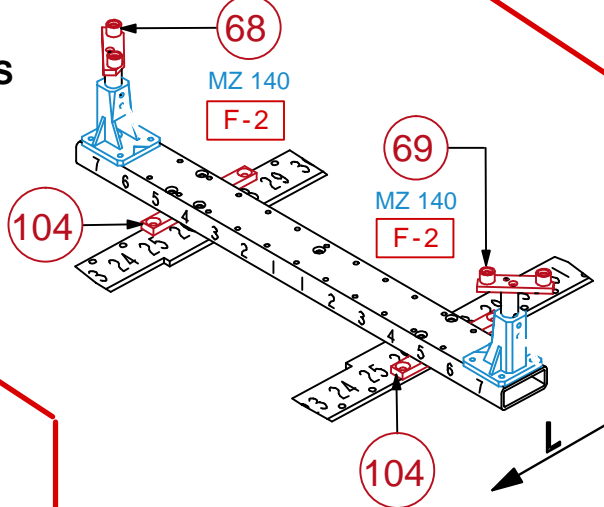
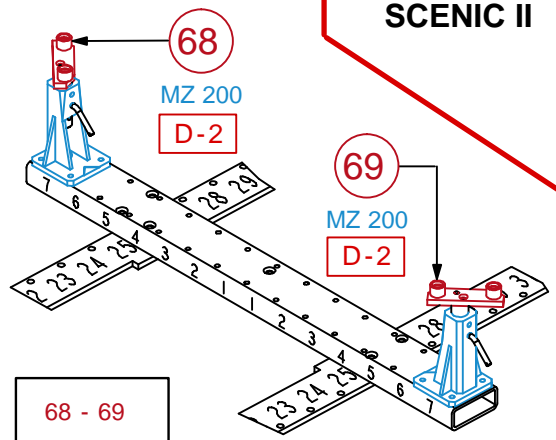
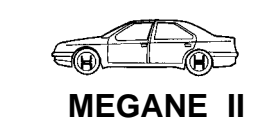
○ Avec ou sans mécanique
With or without mechanical elements
Con o senza parti meccaniche
Mit oder ohne Aggregate
Con ó sin mecánica desmontada

RENAULT





- FIXATION DE L'ESSIEU ARRIERE VIS Ø 12 mm
- FIXING OF THE REAR AXLE SCREWS Ø 12 mm
- BEFESTIGUNG DER HINTERACHSE SCHRAUBEN Ø 12 mm
- FISSAGGIO DELL'ASSALE POSTERIORE VITI Ø 12 mm
- FIJACION DEL EJE TRASERO TORNILLOS Ø 12 mm



○ Avec ou sans mécanique
With or without mechanical elements
Con o senza parti meccaniche
Mit oder ohne Aggregate
Con ó sin mecanica desmontada

RENAULT

896.505		
8 Kg	05.02.2009	427-D-30W
896.505-RVA3-1		00