

○ Avec ou sans mécanique
With or without mechanical elements
Con o senza parti meccaniche
Mit oder ohne Aggregate
Con ó sin mecanica desmontada

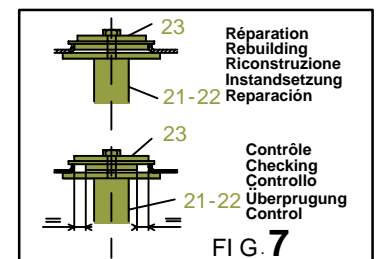
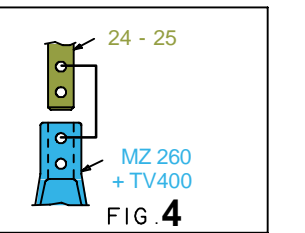
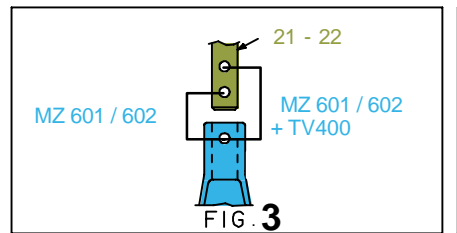
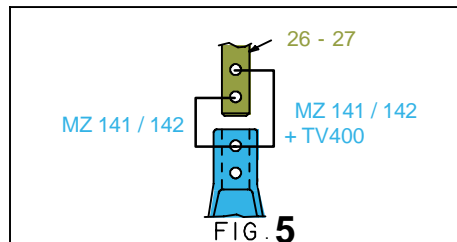
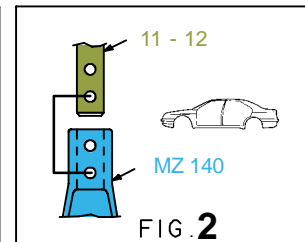
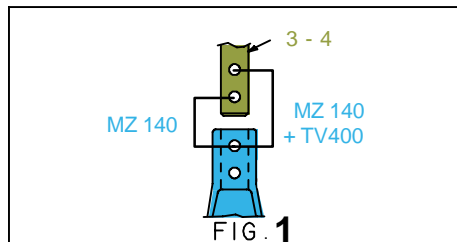
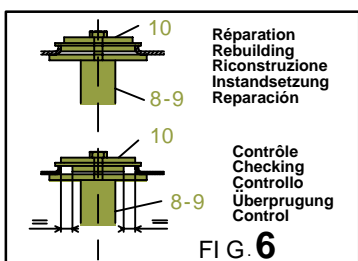
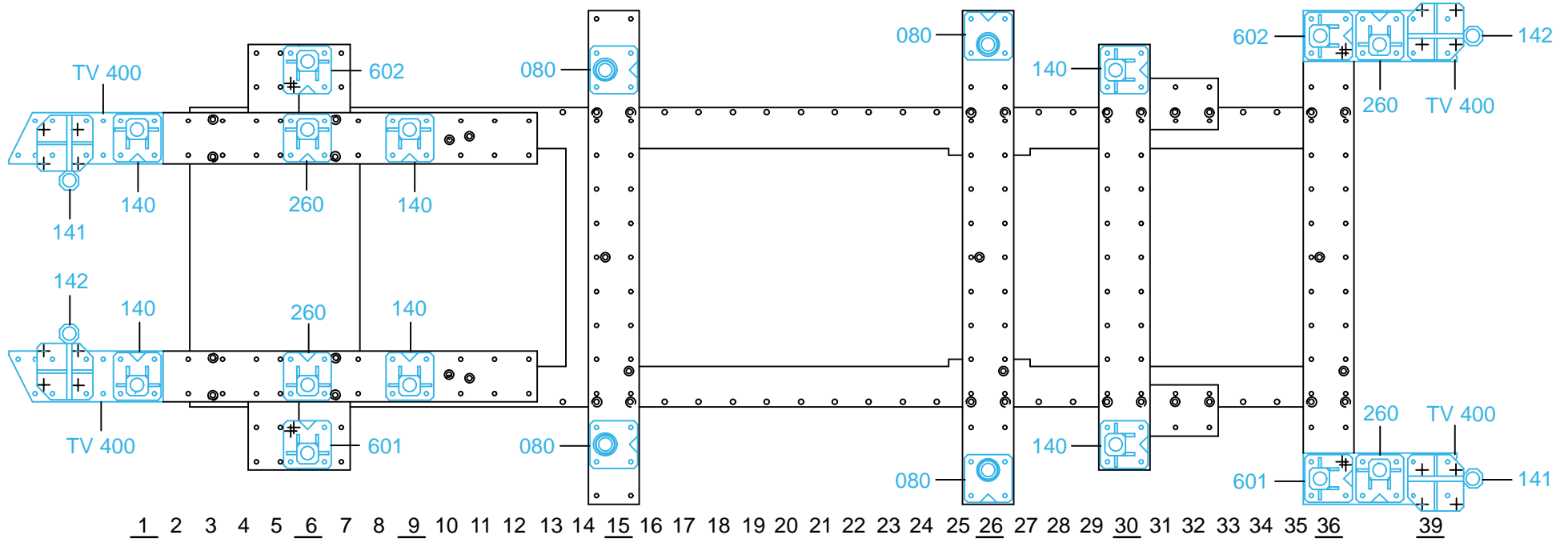
TOYOTA

REP.	REFERENCE	PDS	NB	MZ
1	893.7001	1,7	1	142
2	893.7002	1,7	1	141
3	893.7003	3,3	1	140
4	893.7004	3,4	1	140
5	893.7005	1,8	1	080/260
6	893.7006	1,8	1	080/260
7	893.7007	0,8	2	
8	893.7008	4,9	1	602
9	893.7009	4,9	1	601
10	893.7010	0,8	2	
11	893.7011	2,2	1	080/140
12	893.7012	2,2	1	080/140
13	893.7013	2,6	1	080
14	893.7014	2,6	1	080
15	893.7015	2,3	1	080
16	893.7016	2,3	1	080
17	893.7017	2,4	1	140
18	893.7018	2,4	1	140
19	893.7019	1,2	2	
20	893.7020	1,2	2	
21	893.7021	2,8	1	601
22	893.7022	2,8	1	602
23	893.7023	0,1	2	
24	893.7024	2,8	1	260
25	893.7025	2,8	1	260
26	893.7026	4,2	1	142
27	893.7027	4,2	1	141
32	893.7032	0,1	2	
33	893.7033	0,03	2	
	E46	1,4	2	

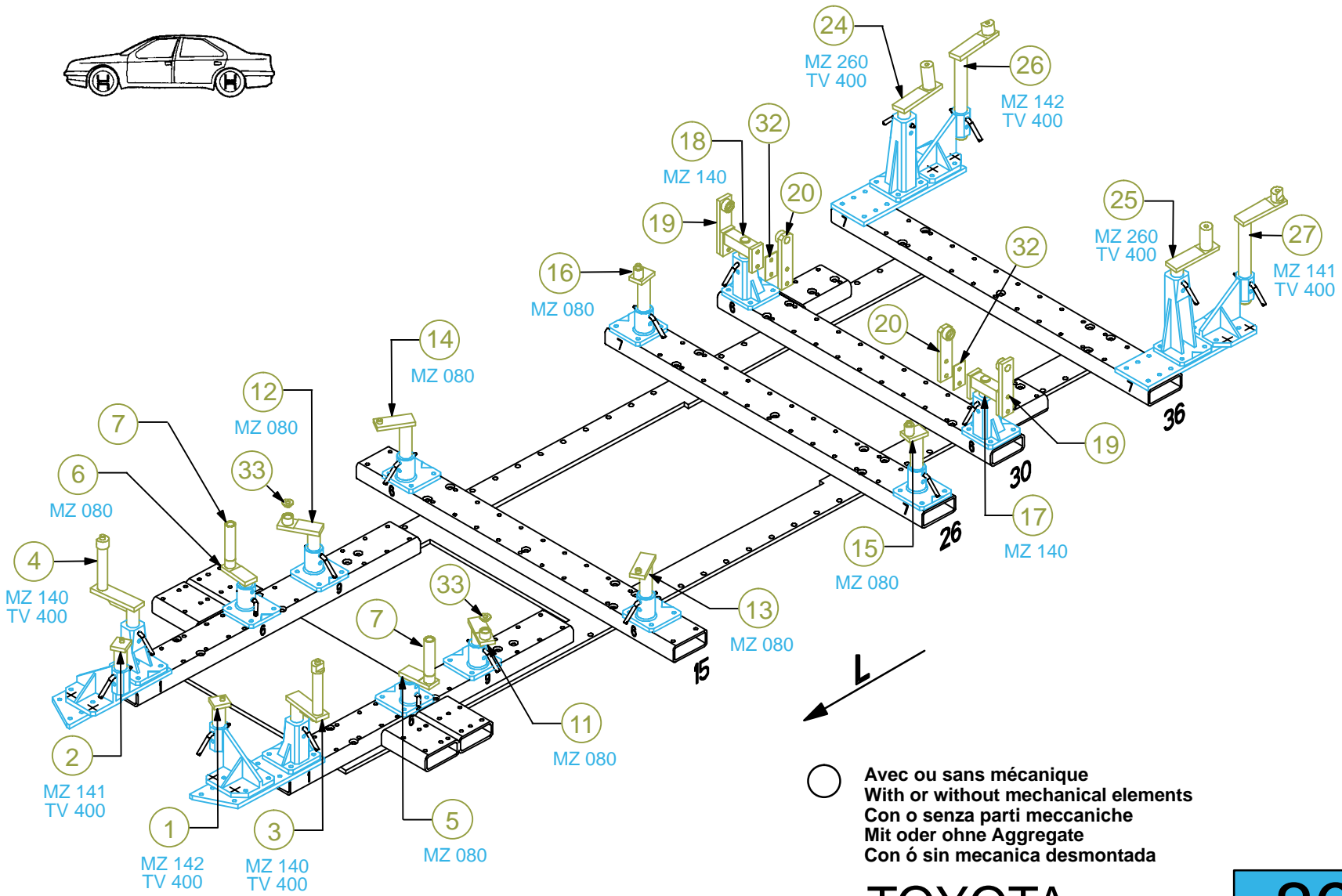
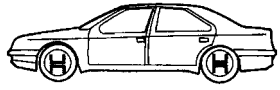
- M 12-30
- M 12x1,25-70
- M 12x1,25-110
- M 14x1,50-60
- M 14x1,50-120

893.300

74 Kg | 28.08.2002 | 434-D-76A



893.300-RVA3-1 | 00

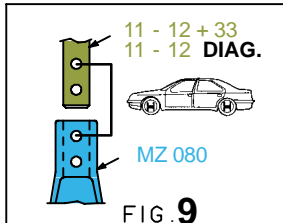
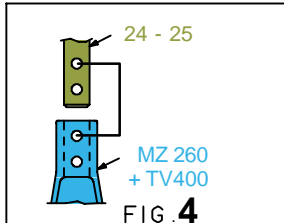
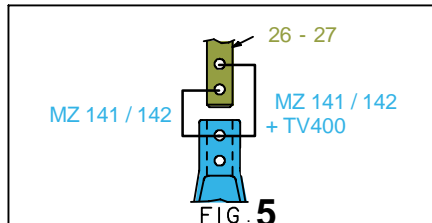
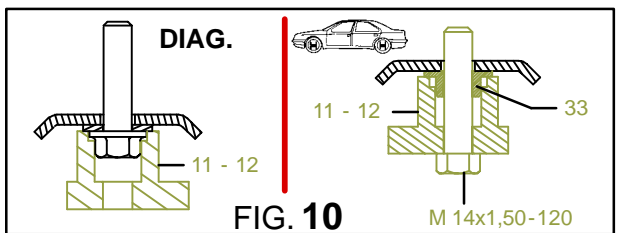
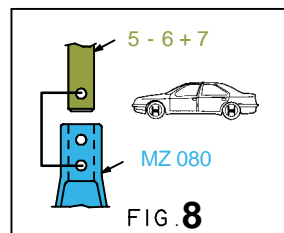
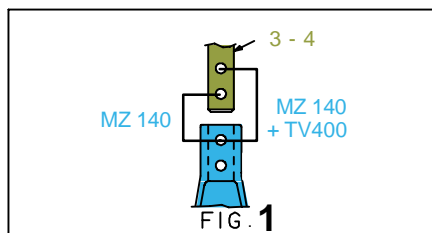
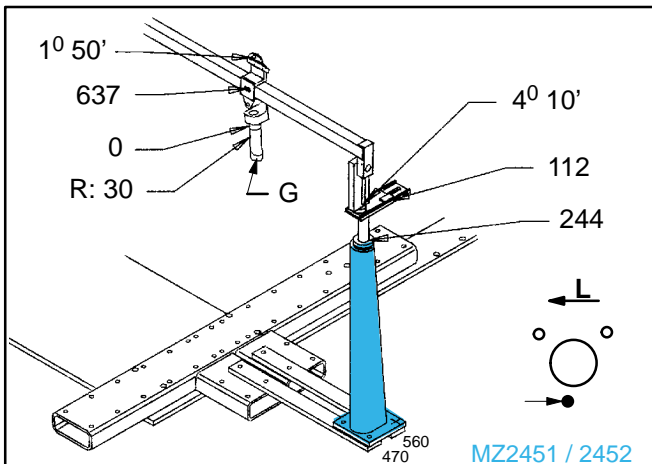
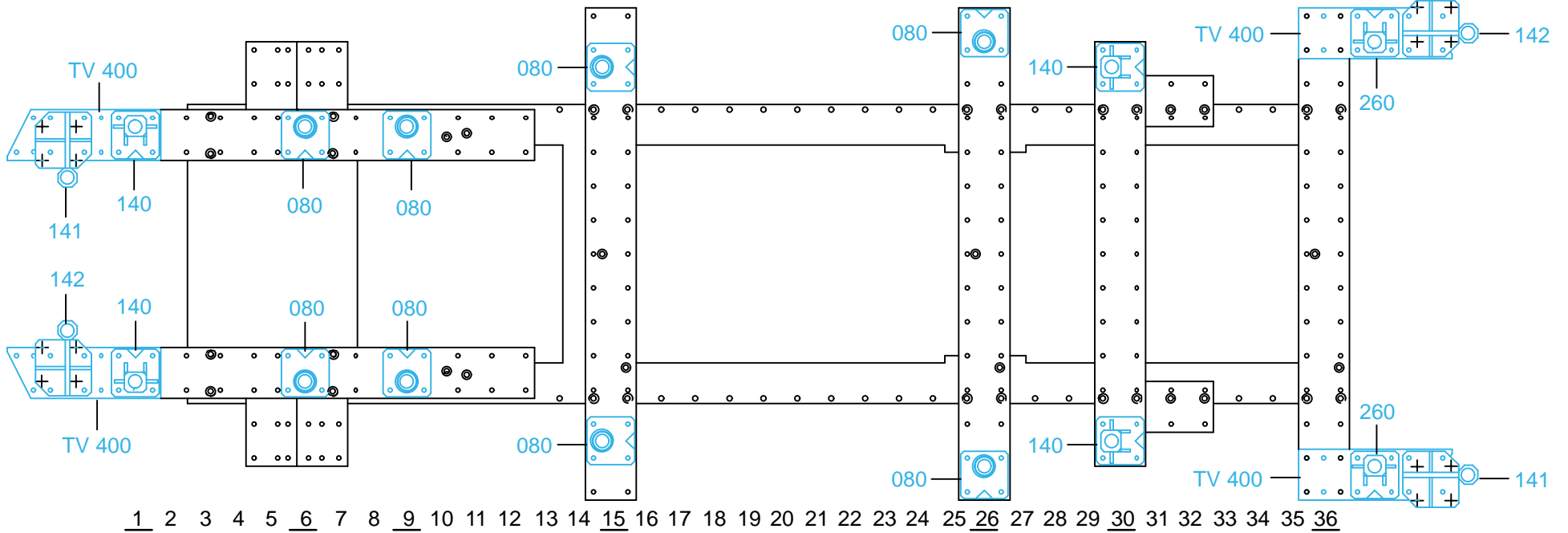


○ Avec ou sans mécanique
With or without mechanical elements
Con o senza parti meccaniche
Mit oder ohne Aggregate
Con ó sin mecanica desmontada

TOYOTA

893.300

74 Kg 28.08.2002 434-D-76B



893.300-RVA3-1 00