

REP.	REFERENCE	PDS	NB	MZ
7	630.707	1,2	2	
10	630.710	3,2	1	260
13	630.713	1,6	1	080
14	630.714	1,6	1	080
15	630.715	1,6	1	140
16	630.716	1,6	1	140
17	630.717	2,8	1	080
20	630.720	0,4	2	
35	630.735	1,5	1	140
36	630.736	1,5	1	140
37	630.737	2,4	1	142
38	630.738	2,4	1	141
39	630.739	2,0	1	602
40	630.740	2,0	1	601
41	630.741	1,9	1	080
42	630.742	1,9	1	080
43	630.743	0,1	2	
44	630.744	2,3	1	080
45	630.745	2,3	1	080
46	630.746	2,2	1	601
47	630.747	2,2	1	602
48	630.748	3,1	1	200
49	630.749	3,1	1	200
E.12	E.12	0,1	2	

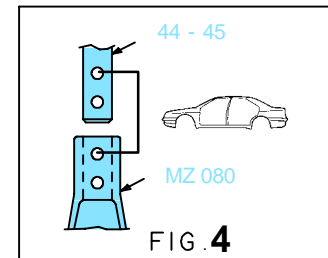
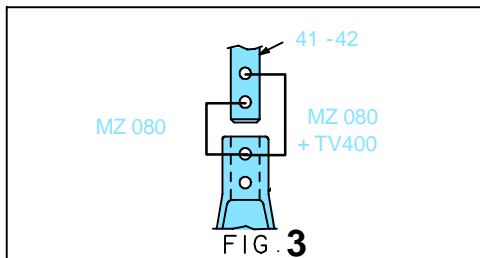
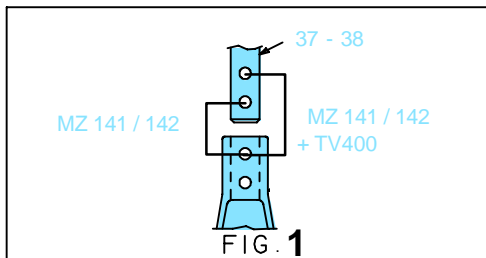
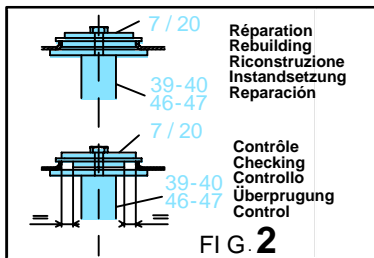
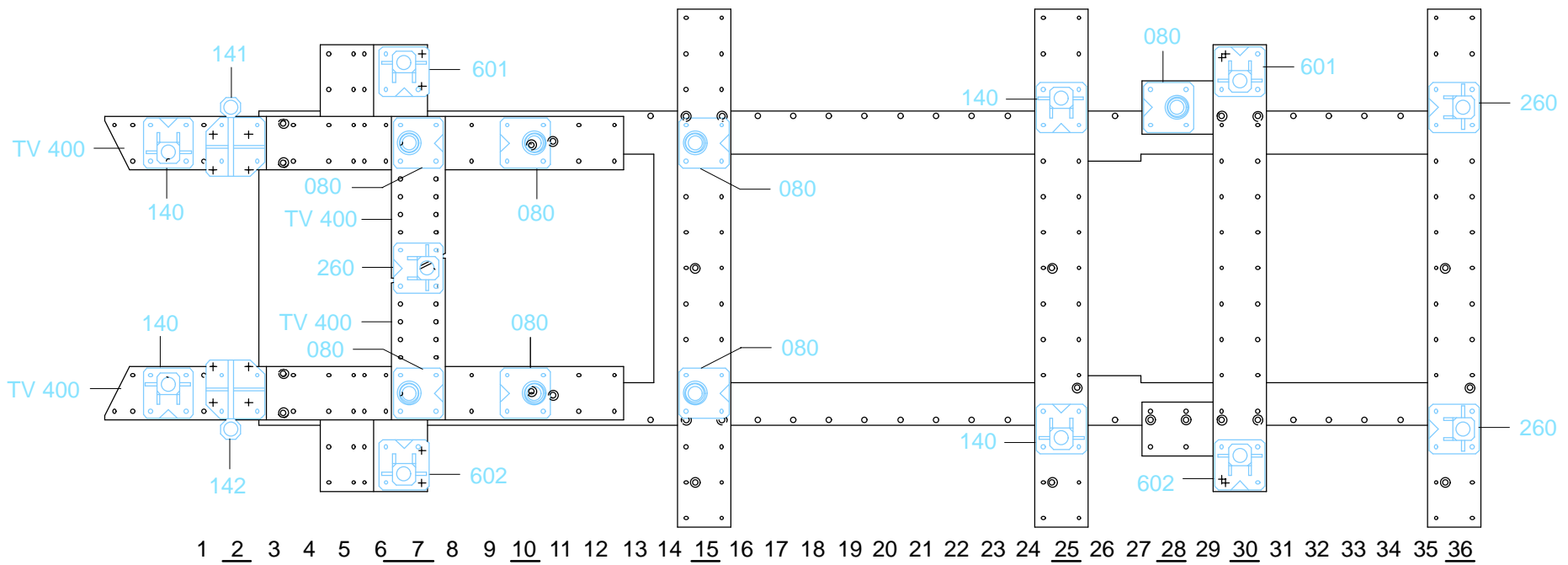
	M 10.125x30	2
	M 12x30	2
	M 12x35	2
	M 12.125x100	6

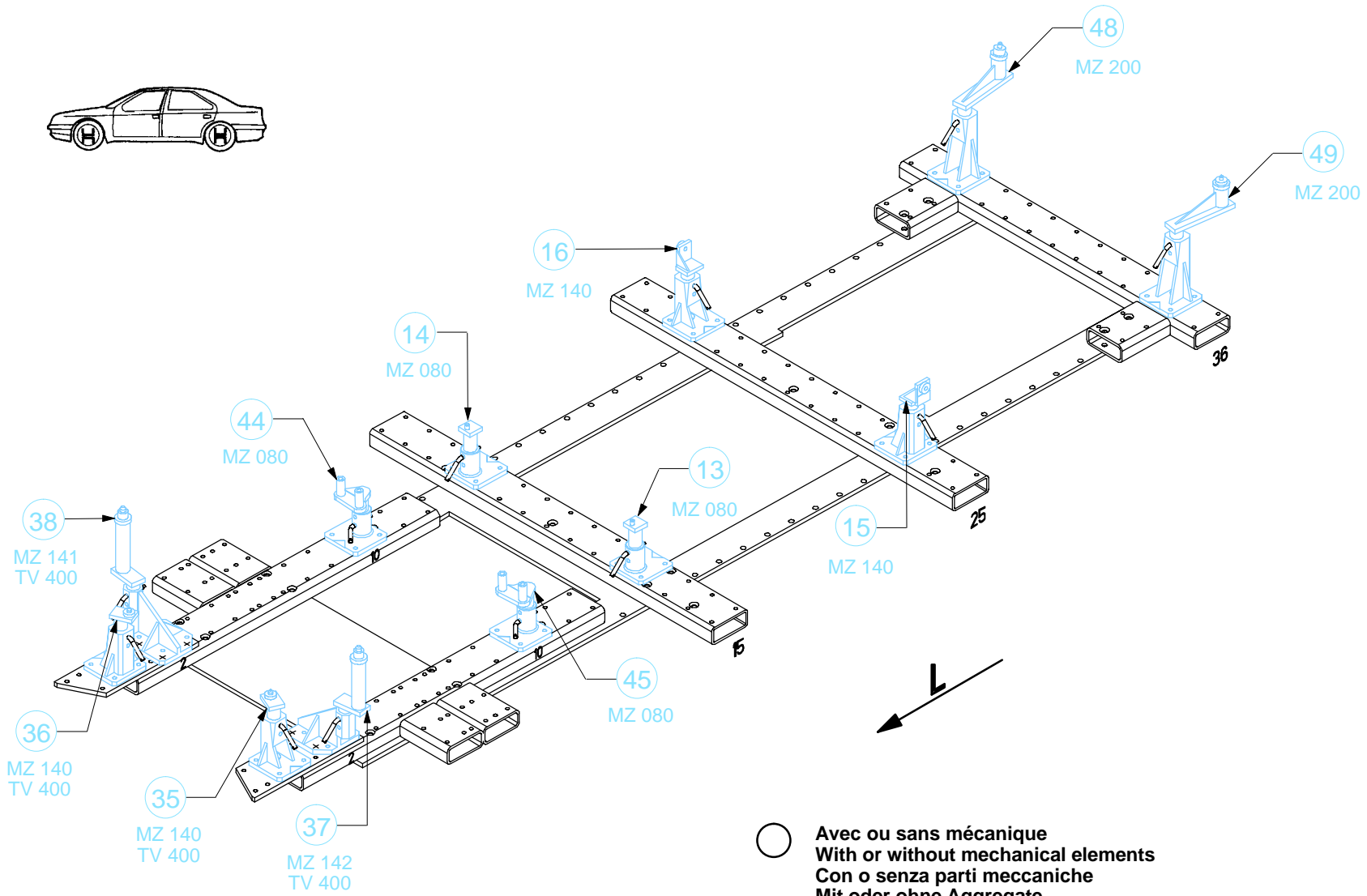
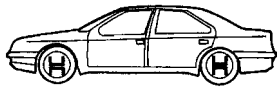
○ Avec ou sans mécanique
With or without mechanical elements
Con o senza parti meccaniche
Mit oder ohne Aggregate
Con ó sin mecanica desmontada

TOYOTA

773.300

48 Kg 03.12.97 434-D-56A





○ Avec ou sans mécanique
 With or without mechanical elements
 Con o senza parti meccaniche
 Mit oder ohne Aggregate
 Con ó sin mecanica desmontada

TOYOTA

773.300

48 Kg 03.12.97 434-D-56B

