

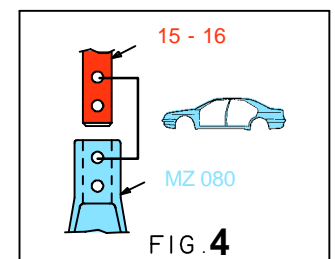
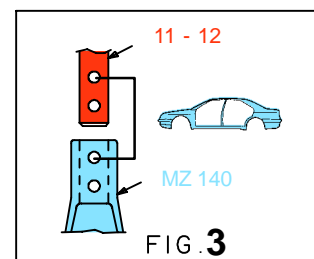
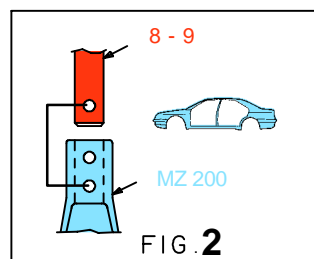
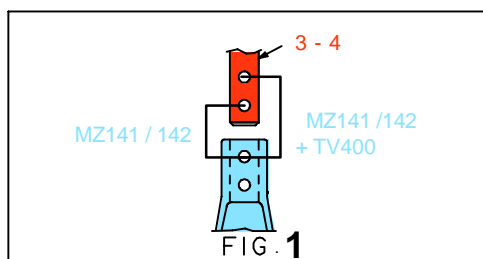
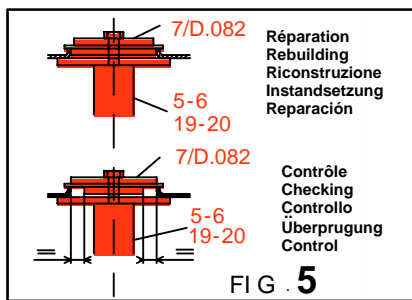
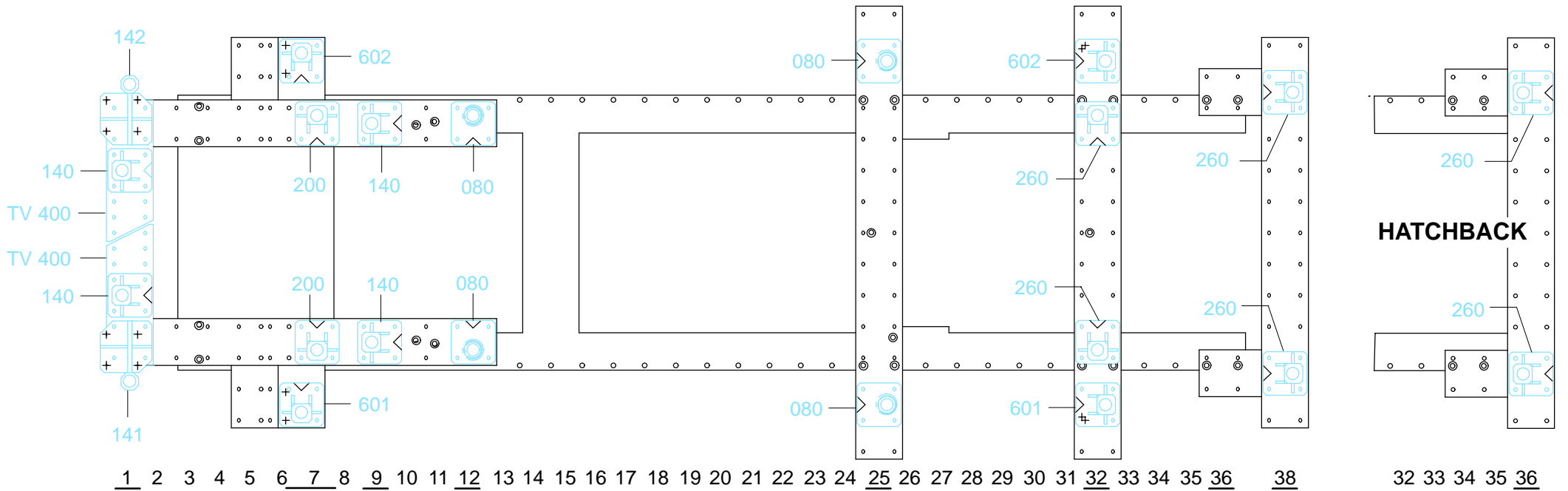
○ Avec ou sans mécanique
With or without mechanical elements
Con o senza parti meccaniche
Mit oder ohne Aggregate
Con ó sin mecanica desmontada

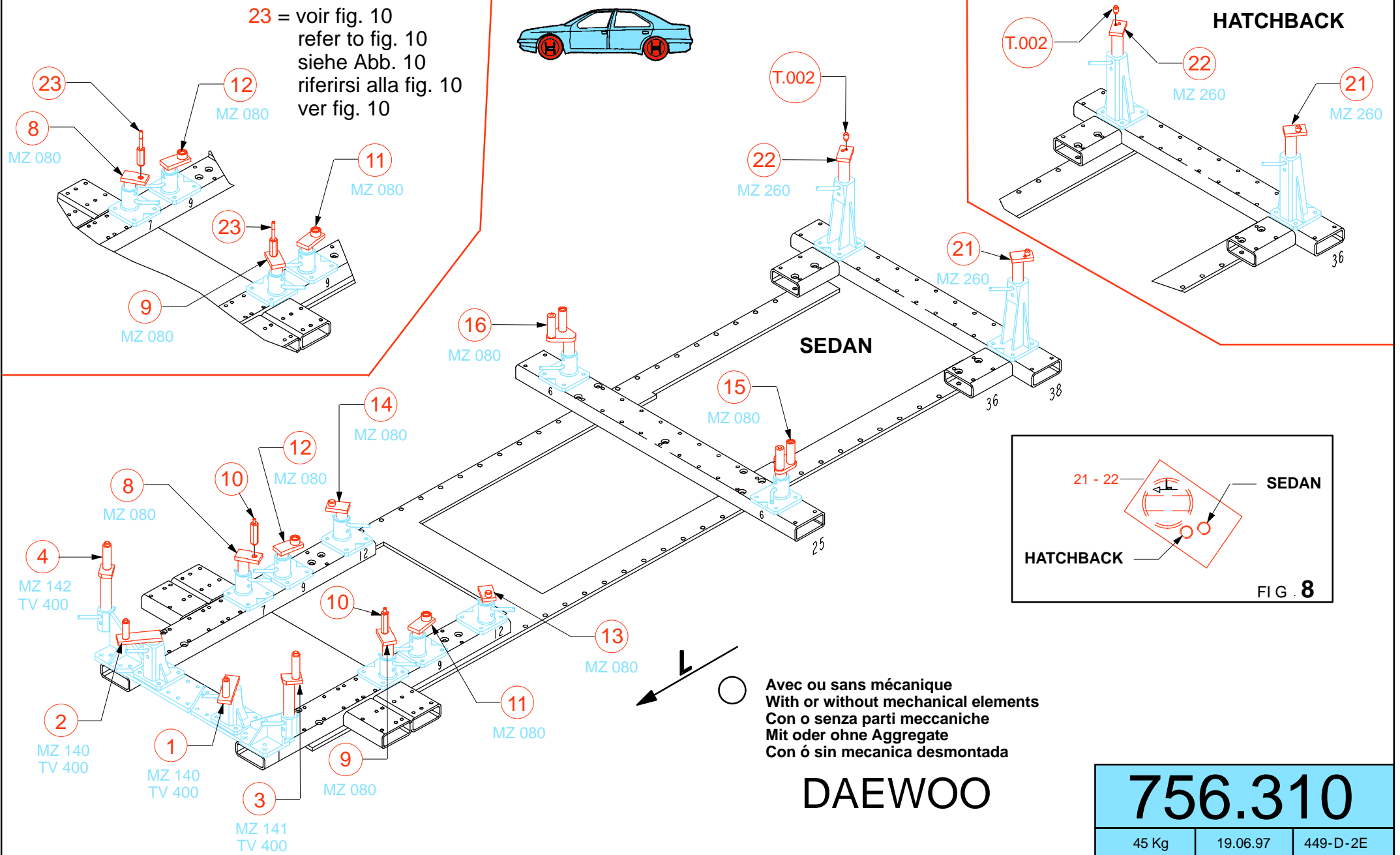
REP.	REFERENCE	PDS	NB	MZ
1	756.7001	1,9	1	140
2	756.7002	1,9	1	140
3	756.7003	2,4	1	141
4	756.7004	2,4	1	142
5	756.7005	2,2	1	601
6	756.7006	2,2	1	602
7	756.7007	0,8	2	
8	756.7008	1,6	1	200/080
9	756.7009	1,6	1	200/080
10	756.7010	0,3	2	
11	756.7011	1,5	1	140/080
12	756.7012	1,5	1	140/080
13	756.7013	1,4	1	080
14	756.7014	1,4	1	080
15	756.7015	2,6	1	080
16	756.7016	2,6	1	080
17	756.7017	2,4	1	260
18	756.7018	2,4	1	260
19	756.7019	2,0	1	601
20	756.7020	2,0	1	602
21	756.7021	2,0	1	260
22	756.7022	2,0	1	260
23	756.7023	0,3	2	
	D.082	0,6	2	
	T.002	0,05	2	

M 10x20	2
M 10.125x30	2
M 12x30	4
M 12.125x30	4
M 12.125x120	4
M 14.150x50	2
M 14.150x120	2

756.310

45 Kg 19.06.97 449-D-2D





DAEWOO **756.310**

45 Kg	19.06.97	449-D-2E
-------	----------	----------

