

○ Avec ou sans mécanique
 With or without mechanical elements
 Con o senza parti meccaniche
 Mit oder ohne Aggregate
 Con ó sin mecanica desmontada

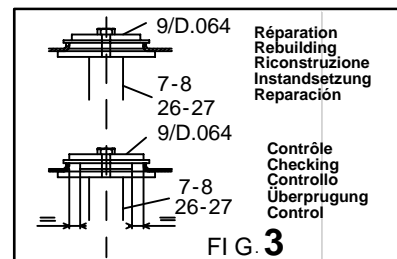
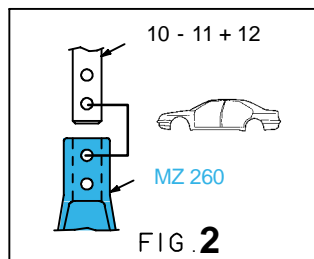
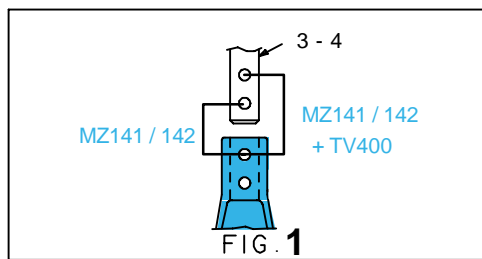
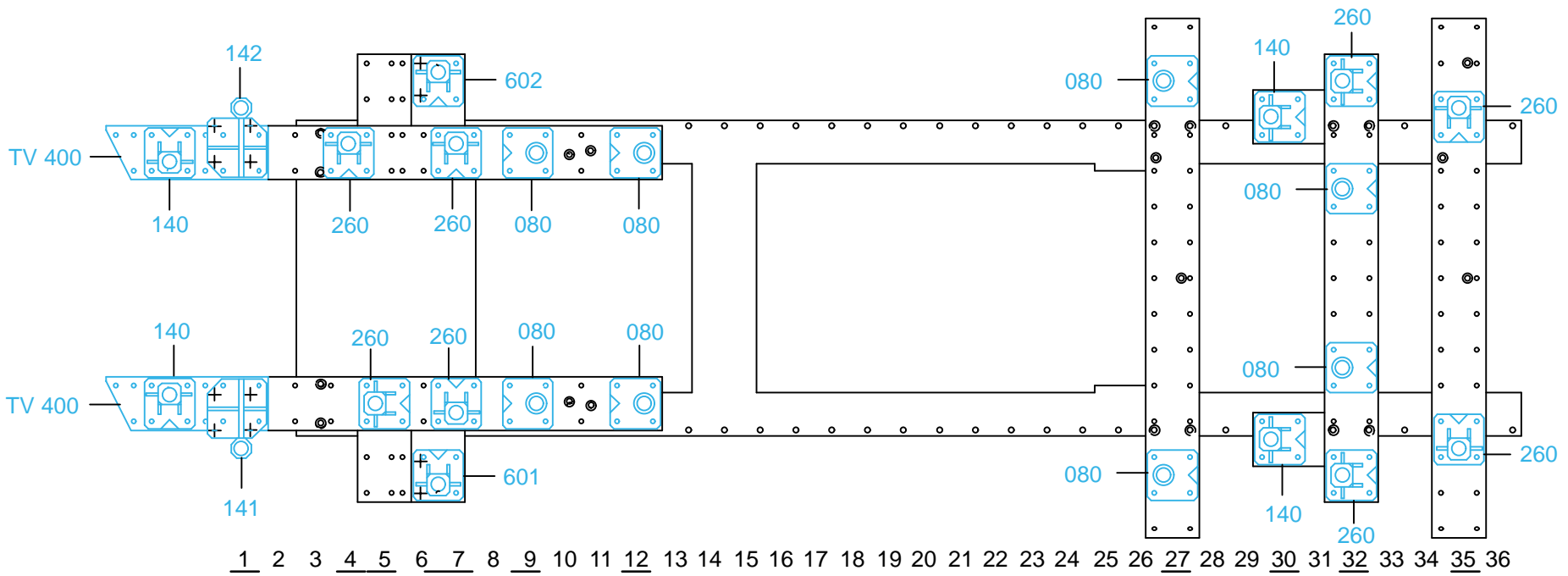
MITSUBISHI

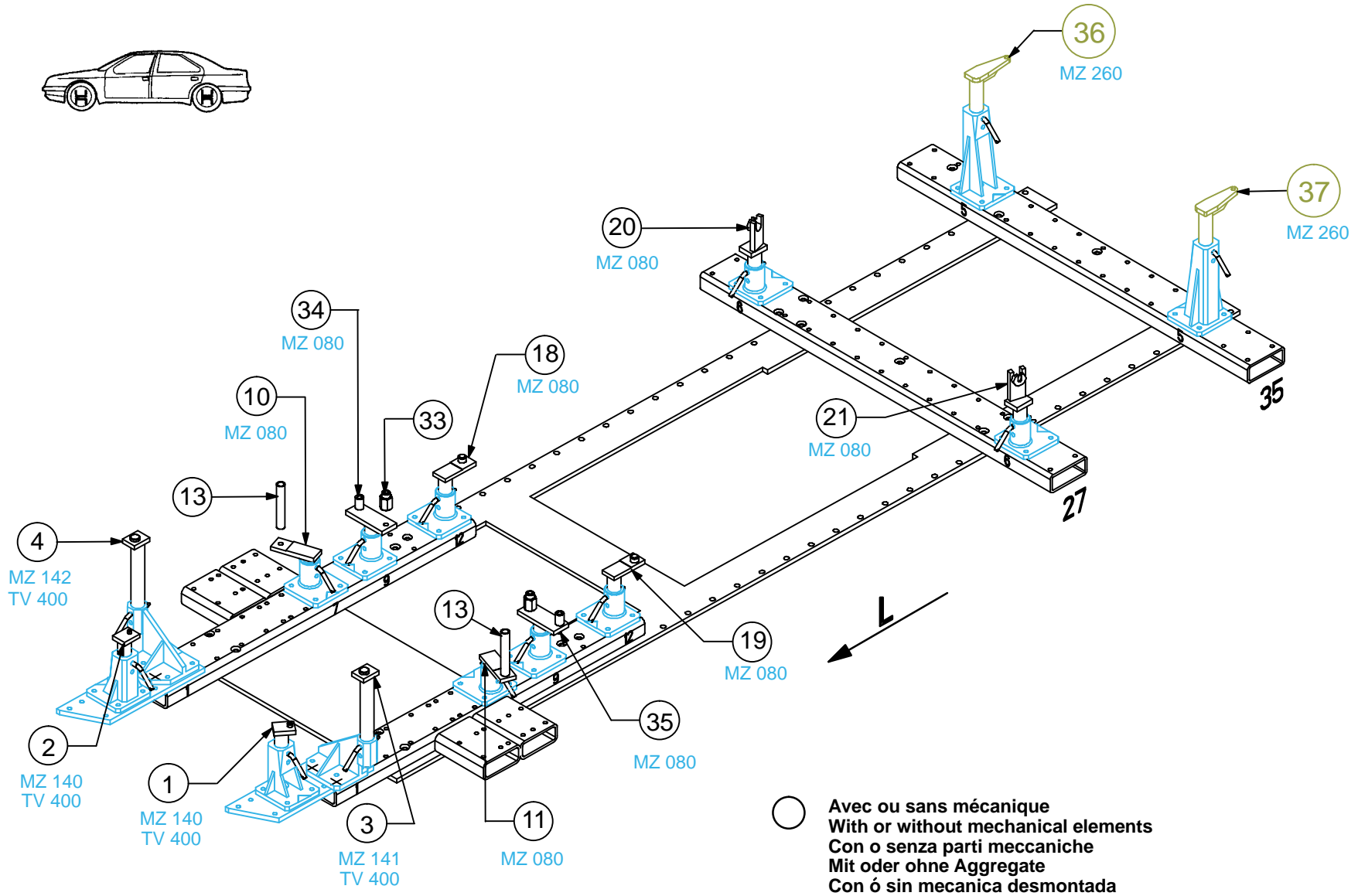
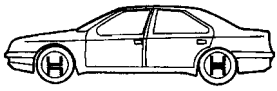
| REP. | REFERENCE | PDS | NB | MZ |
|------|-----------|-----|----|-----|
| 36 | 718.7036 | 2,5 | 1 | 260 |
| 37 | 718.7037 | 2,5 | 1 | 260 |

complément au
 complementary set to
 complemento al
 Zusatz zu **718.310**

718.308

5 Kg 12.03.2001 421-D-20E

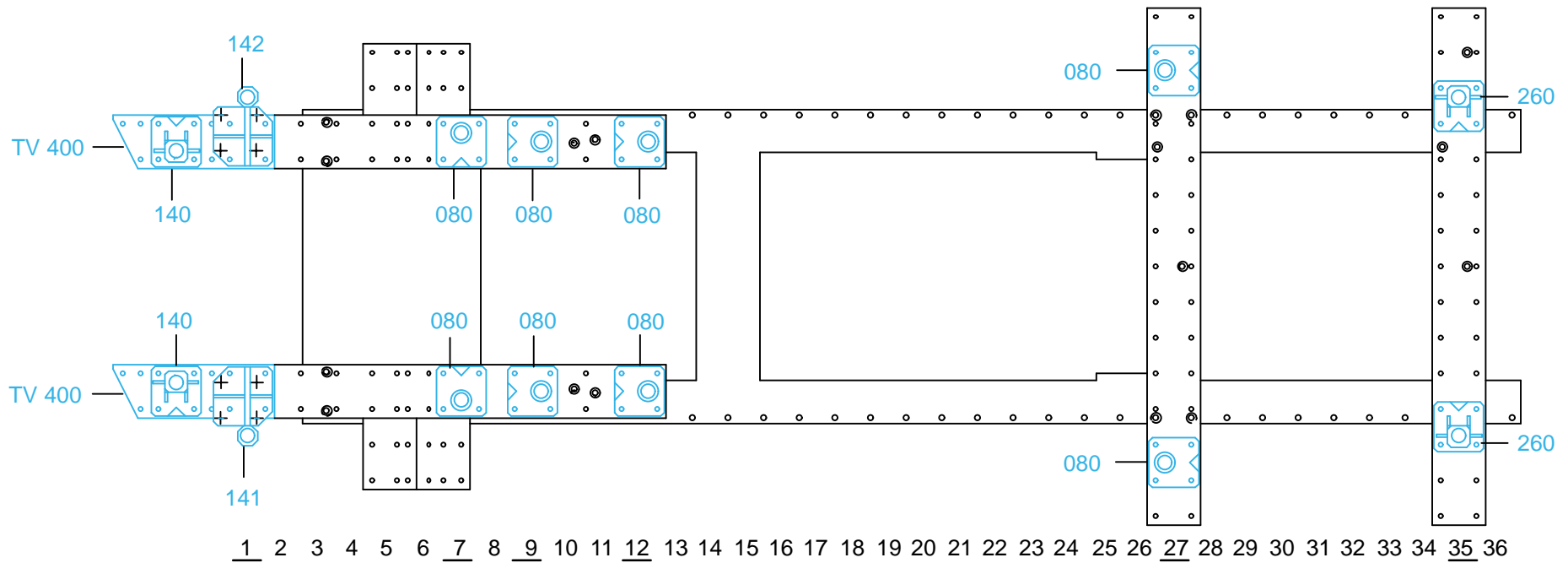




MITSUBISHI

718.308

5 Kg | 12.03.2001 | 421-D-20F



1 2 3 4 5 6 7 8 9 10 11 12 13 14 15 16 17 18 19 20 21 22 23 24 25 26 27 28 29 30 31 32 33 34 35 36

