

REP.	REFERENCE	PDS	NB	MZ
26	698.726	2,8	1	080
27	698.727	2,8	1	080
28	698.728	2,2	1	140
29	698.729	3,0	1	140/080
30	698.730	3,0	1	140/080
31	698.731	0,4	2	
32	698.732	2,4	1	140/080
33	698.733	2,4	1	140/080
34	698.734	3,0	1	200
35	698.735	3,0	1	200
36	698.736	4,2	1	260
37	698.737	4,2	1	260
38	698.738	0,2	2	
39	698.739	3,0	1	200
40	698.740	3,0	1	200
41	698.741	0,06	2	

M 10.125x35	2
M 12x20	2
M 12x25	2
M 12x30	2
M 12.125x60	1
M 12.125x70	2
M 12.125x130	2
M 14.150x130	4
M 14.150x200	2
M 12	2

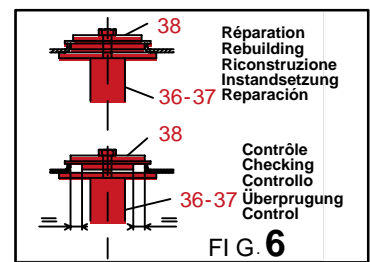
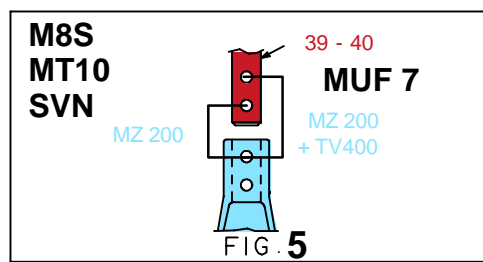
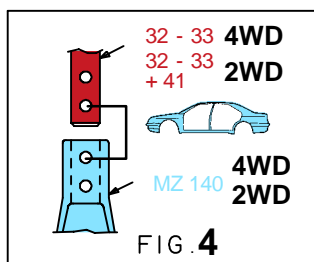
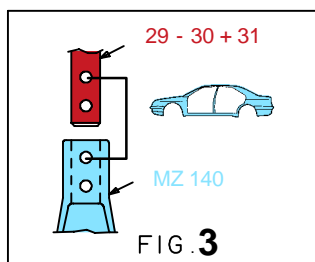
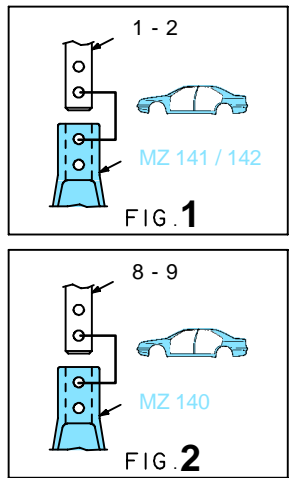
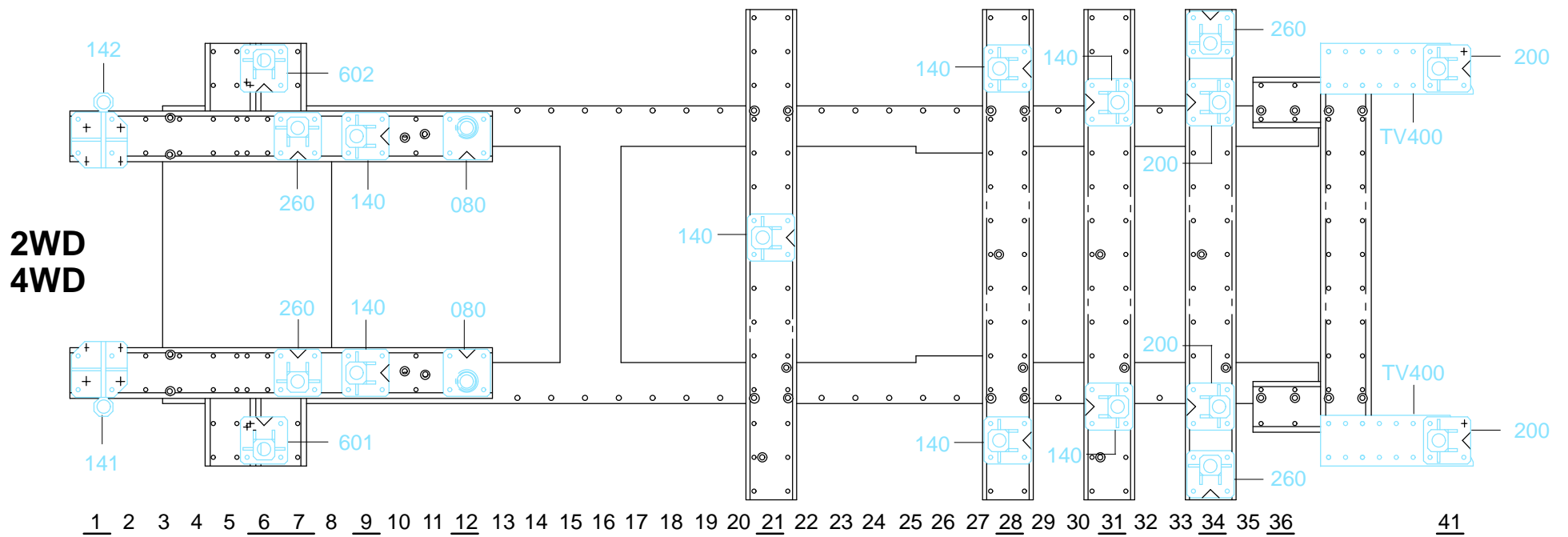
complément au  
complementary set to  
complemento al  
zusatz zu

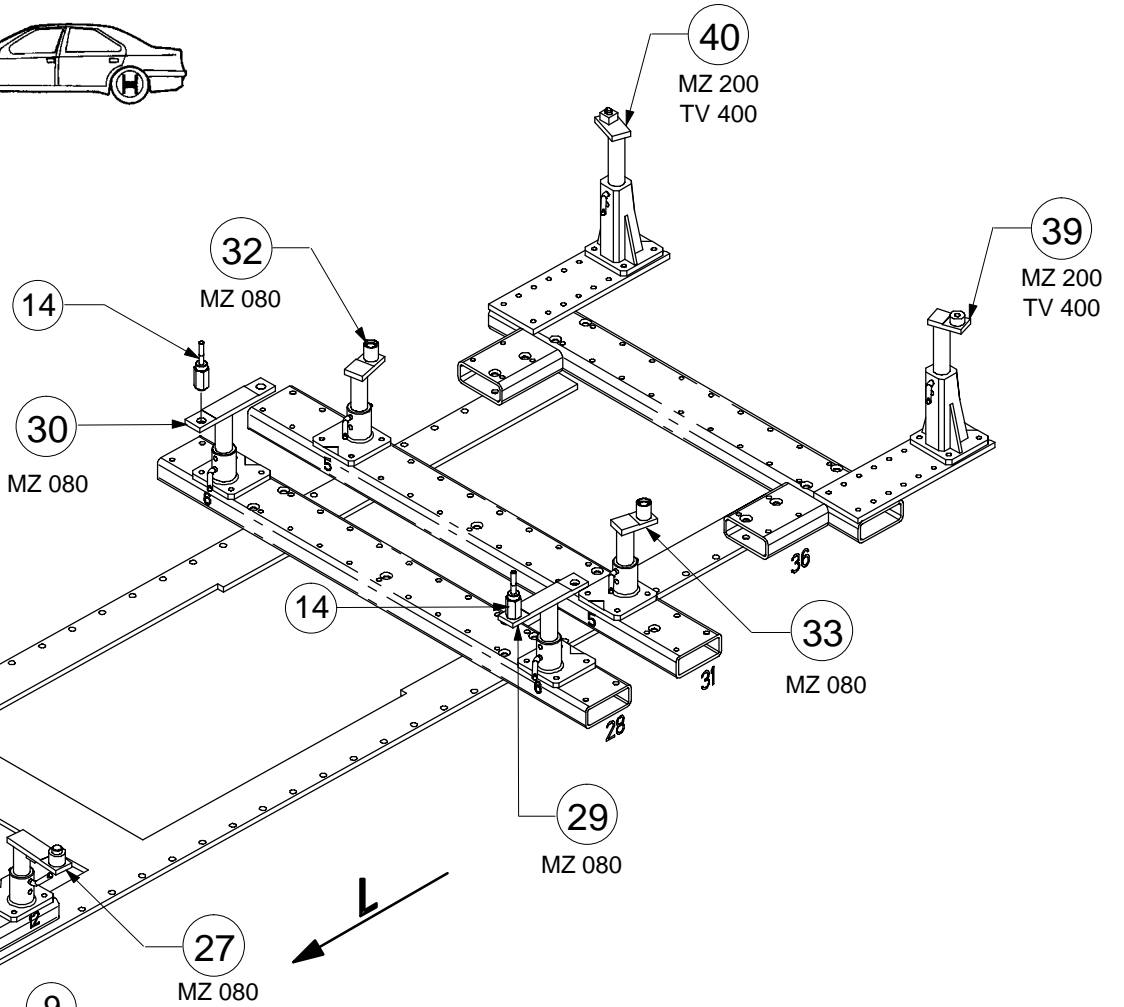
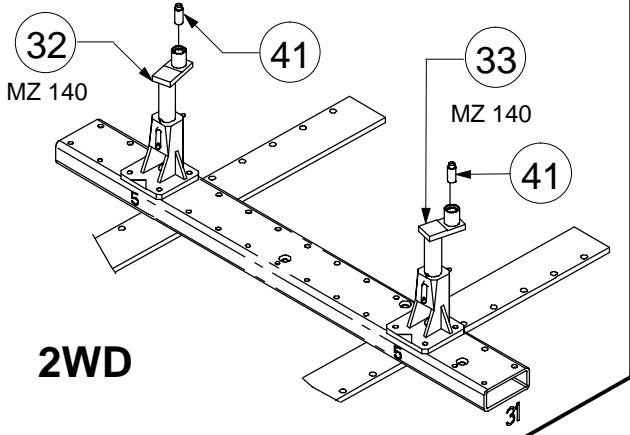
**698.300**

**698.309**

42 Kg    12.07.95    413-D-22C

**HONDA**





**4WD**

○ Avec ou sans mécanique  
With or without mechanical elements  
Con o senza parti meccaniche  
Mit oder ohne Aggregate  
Con ó sin mecanica desmontada

**HONDA**

**698.309**

42 Kg    12.07.95    413-D-22D

