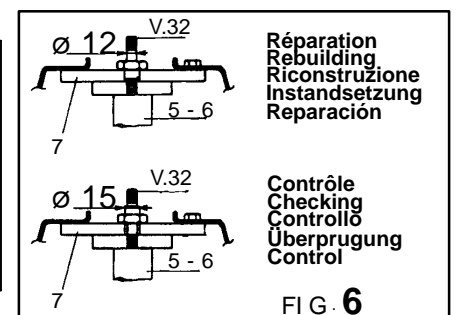
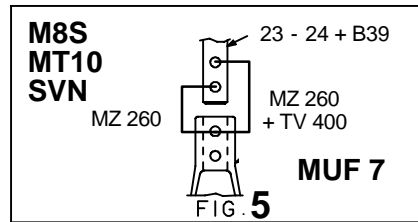
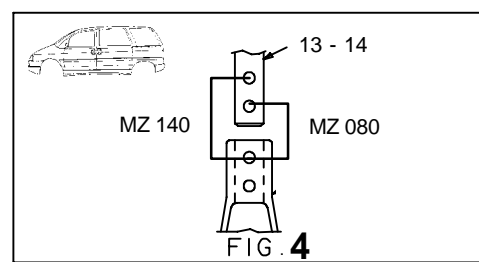
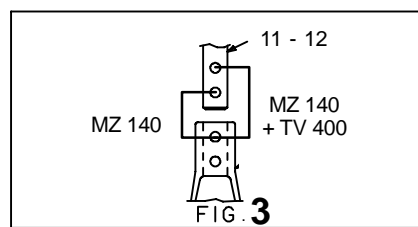
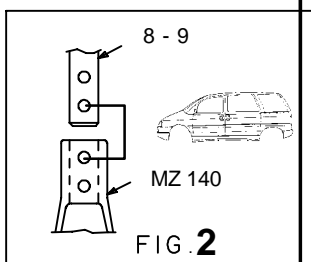
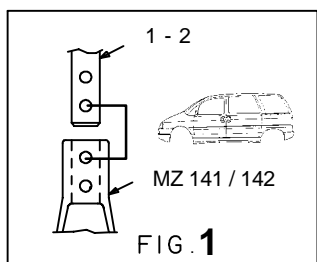
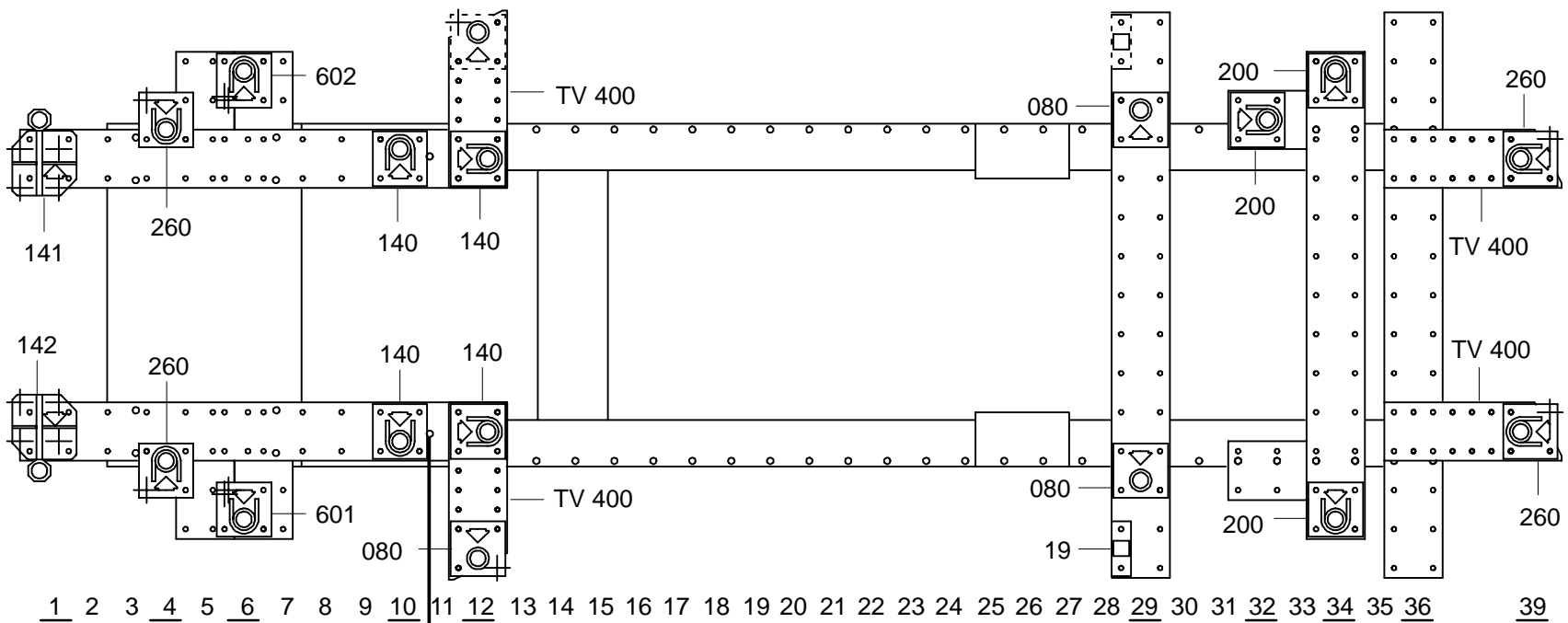


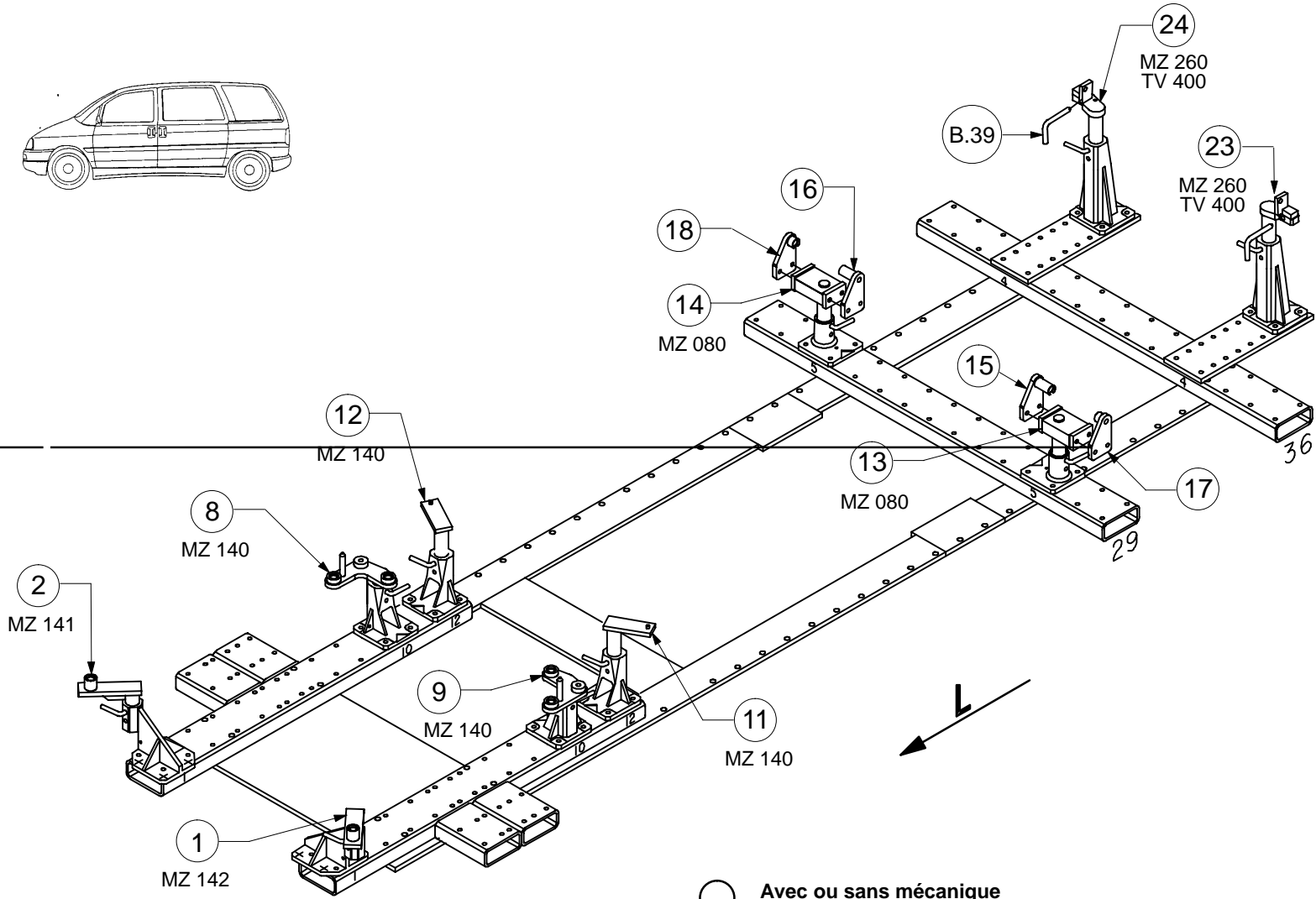
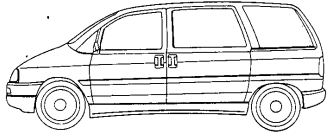
REP.	REFERENCE	PDS	NB	MZ
1	696.701	2,8	1	142
2	696.702	2,8	1	141
3	696.703	3,0	1	260
4	696.704	3,1	1	260
5	696.705	3,4	1	601
6	696.706	3,4	1	602
7	696.707	2,1	2	
8	696.708	3,2	1	140
9	696.709	3,2	1	140
10	696.710	2,1	1	080
11	696.711	2,3	1	140
12	696.712	2,3	1	140
13	696.713	3,2	1	140/080
14	696.714	3,2	1	140/080
15	696.715	1,0	1	
16	696.716	1,0	1	
17	696.717	0,9	1	
18	696.718	0,9	1	
19	696.719	1,8	1	
20	696.720	1,7	1	200
21	696.721	2,9	1	200
22	696.722	2,9	1	200
23	696.723	2,9	1	260
24	696.724	2,9	1	260
25	696.725	1,0	1	
	E.12	0,1	2	
	B.39	0,2	2	
	V.32	0,1	2	
	M 8x25		4	
	M 10x25		6	
	M 12x30		8	
	M 12x50		6	
	M 12x70		2	
	M 12x100		6	
	M 12x110		4	
	M 12		2	
	M 12		2	

PEUGEOT / CITROEN / FIAT / LANCIA

696.300

65 Kg 12.01.96 423-D-15A



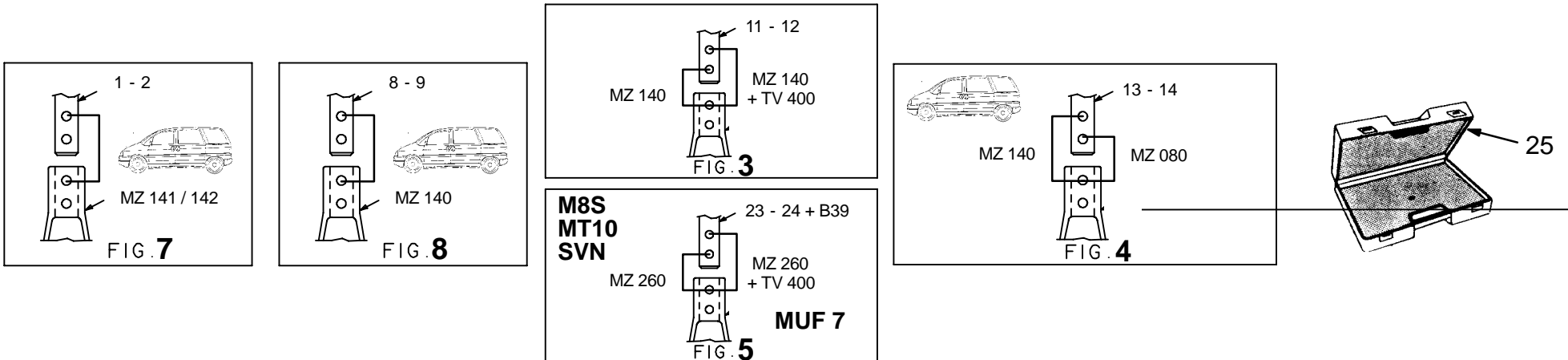
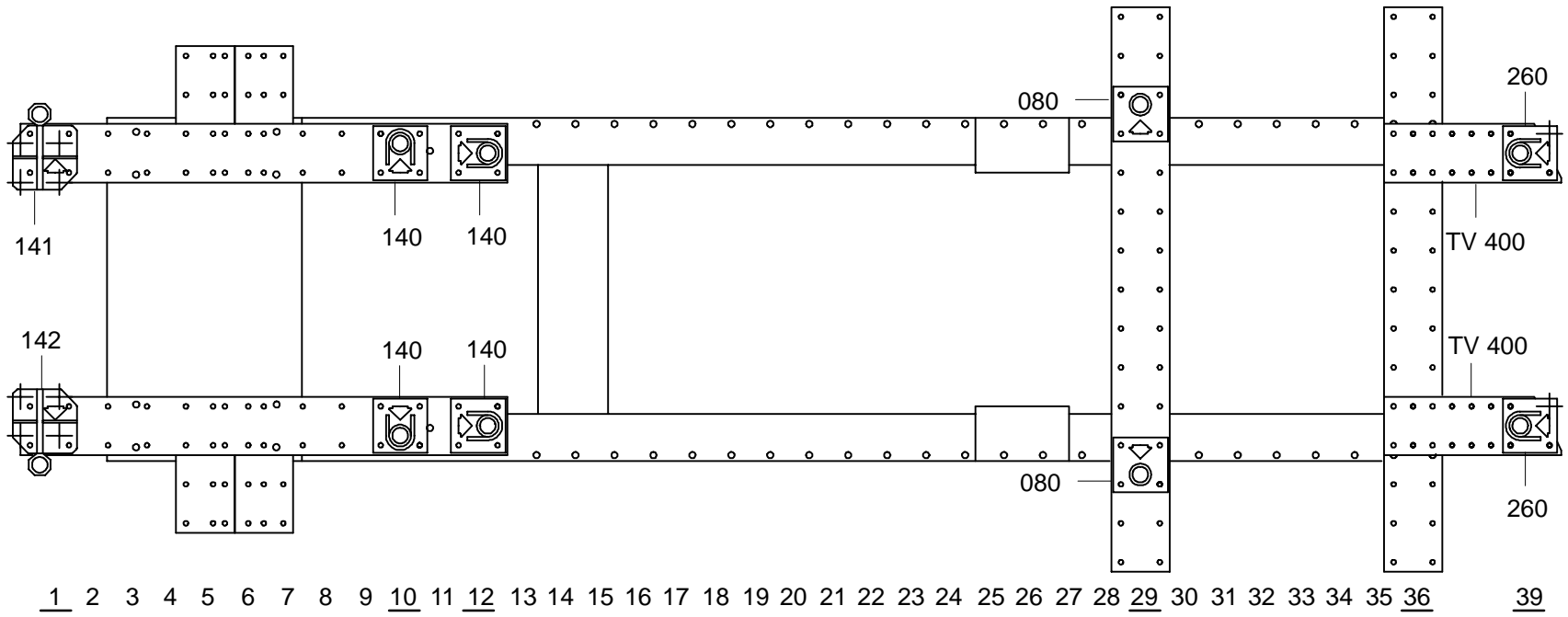


○ Avec ou sans mécanique
With or without mechanical elements
Con o senza parti meccaniche
Mit oder ohne Aggregate
Con ó sin mecanica desmontada

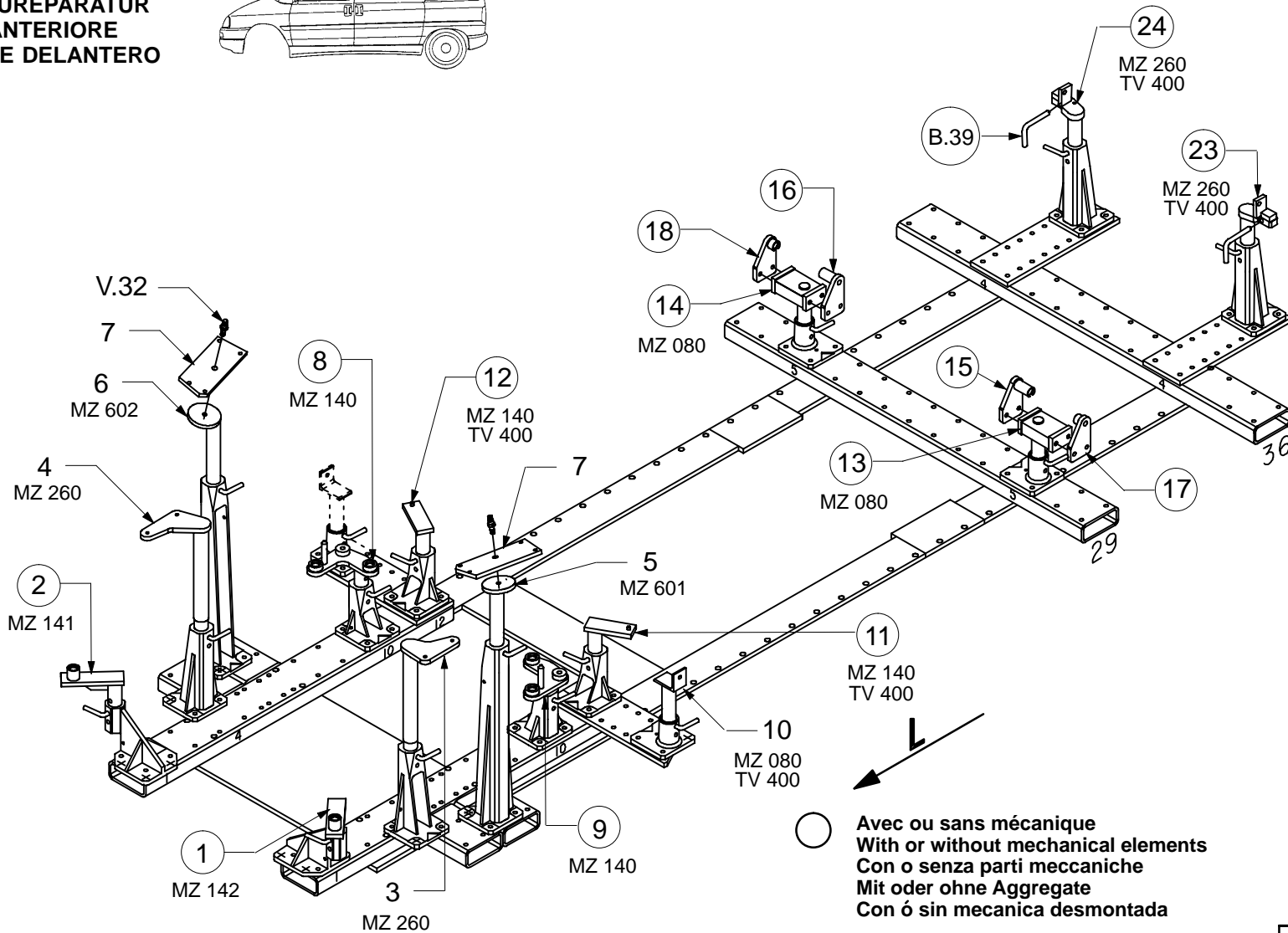
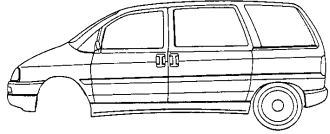
PEUGEOT / CITROEN / FIAT / LANCIA

696.300

65 Kg | 12.01.96 | 423-D-15B



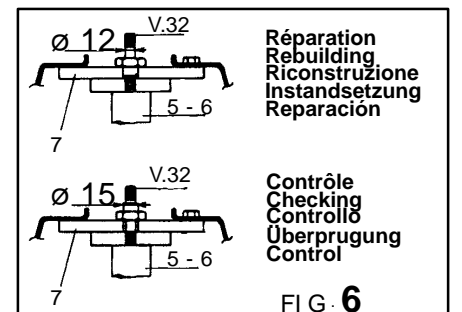
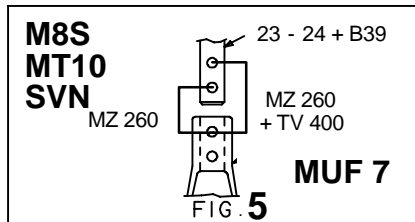
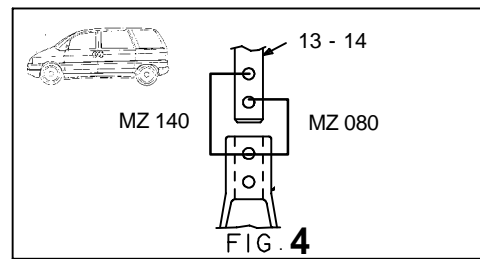
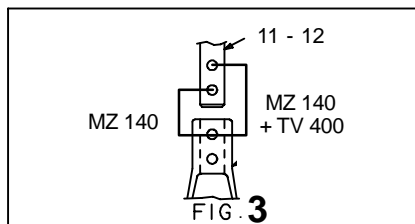
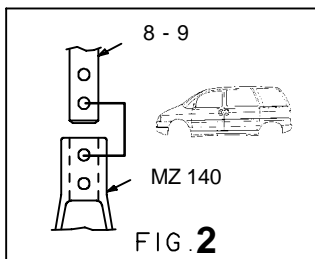
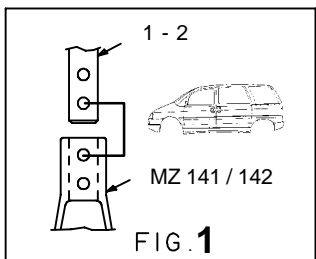
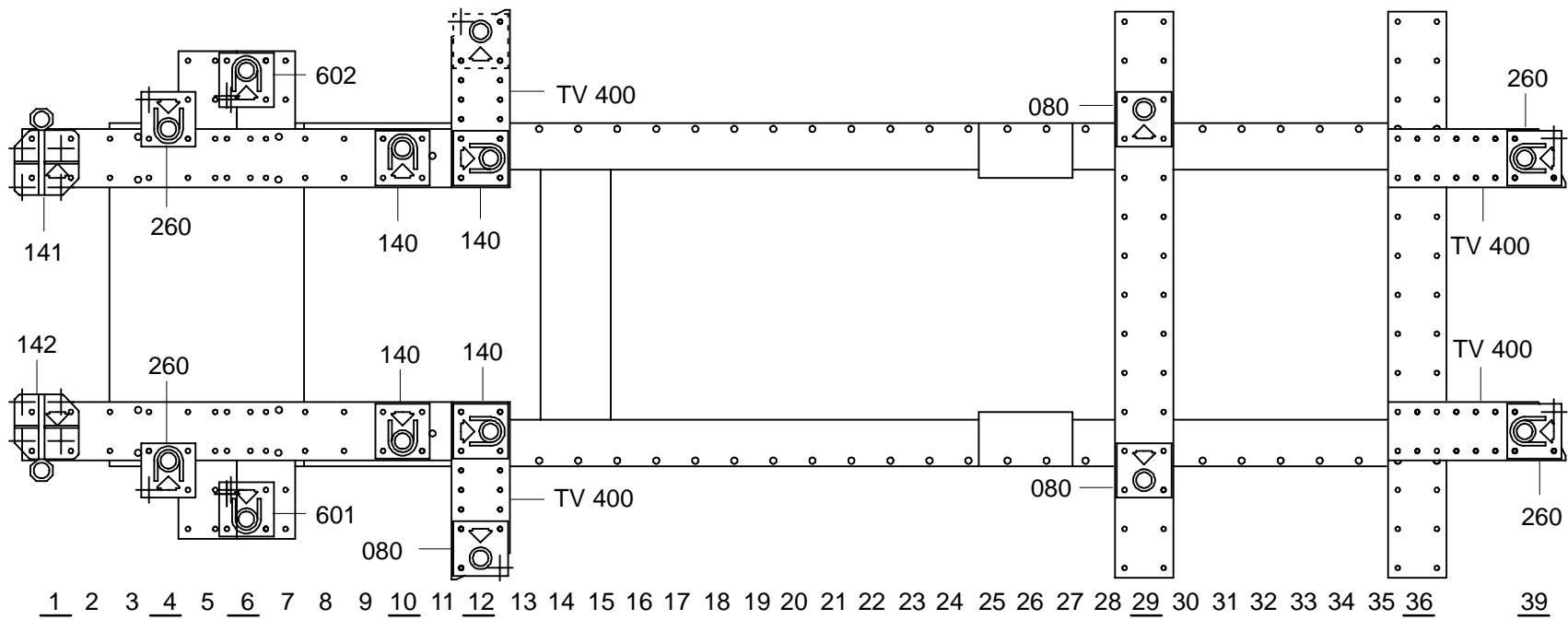
CHOC AVANT
FRONT DAMAGE
VORBAUREPARATUR
URTO ANTERIORE
CHOQUE DELANTERO



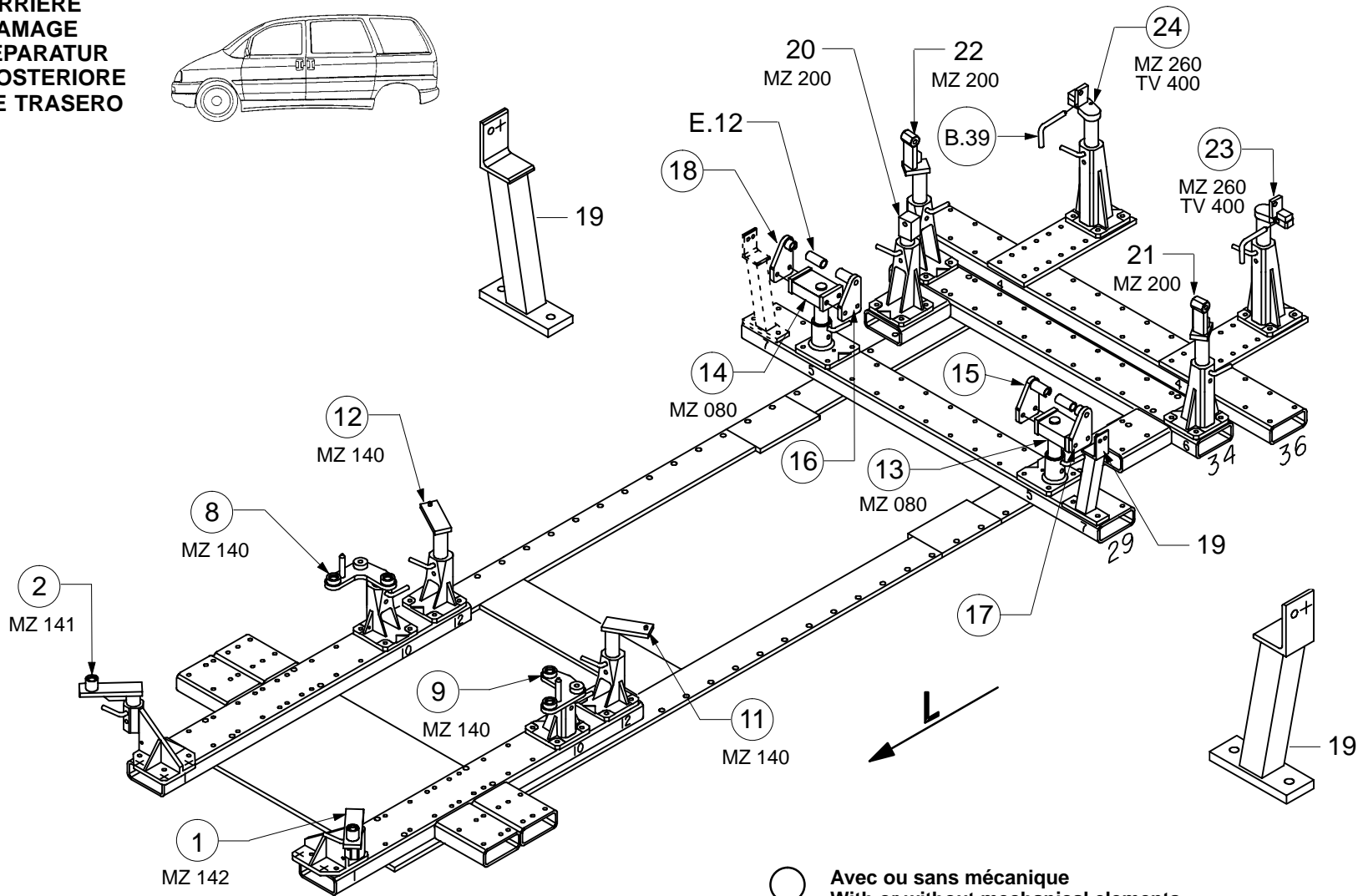
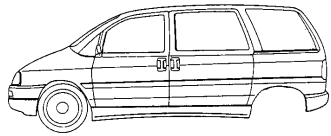
PEUGEOT / CITROEN / FIAT / LANCIA

696.300

65 Kg 12.01.96 423-D-15C



CHOC ARRIERE
REAR DAMAGE
HECKREPARATUR
URTO POSTERIORE
CHOQUE TRASERO

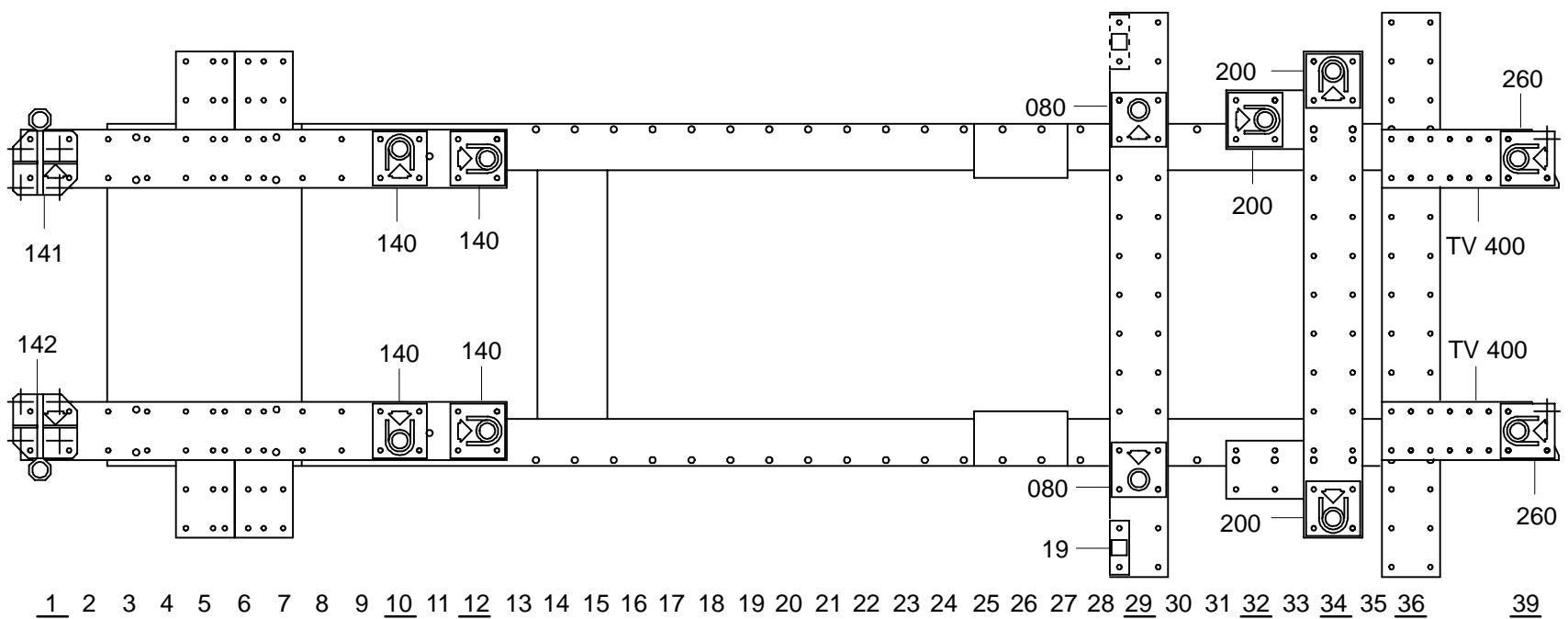


○ Avec ou sans mécanique
With or without mechanical elements
Con o senza parti meccaniche
Mit oder ohne Aggregate
Con ó sin mecanica desmontada

PEUGEOT / CITROEN / FIAT / LANCIA

696.300

65 Kg | 12.01.96 | 423-D-15D



1 2 3 4 5 6 7 8 9 10 11 12 13 14 15 16 17 18 19 20 21 22 23 24 25 26 27 28 29 30 31 32 33 34 35 36 39

