

REP.	REFERENCE	PDS	NB	MZ
1	690.701	2,6	1	080
2	690.702	3,2	1	142
3	690.703	3,2	1	141
4	690.704	4,2	1	602
5	690.705	4,2	1	601
6	690.706	1,0	2	
7	690.707	2,6	1	260
8	690.708	2,6	1	260
9	690.709	2,7	1	140/080
10	690.710	2,7	1	140/080
11	690.711	0,2	2	
12	690.712	1,8	1	080
13	690.713	1,8	1	080
14	690.714	2,4	1	140
15	690.715	2,4	1	140
16	690.716	1,0	2	
17	690.717	3,7	1	260
18	690.718	3,7	1	260
19	690.719	3,0	1	601
20	690.720	3,0	1	602
21	690.721	0,5	2	
22	690.722	2,7	1	200
23	690.723	2,7	1	200

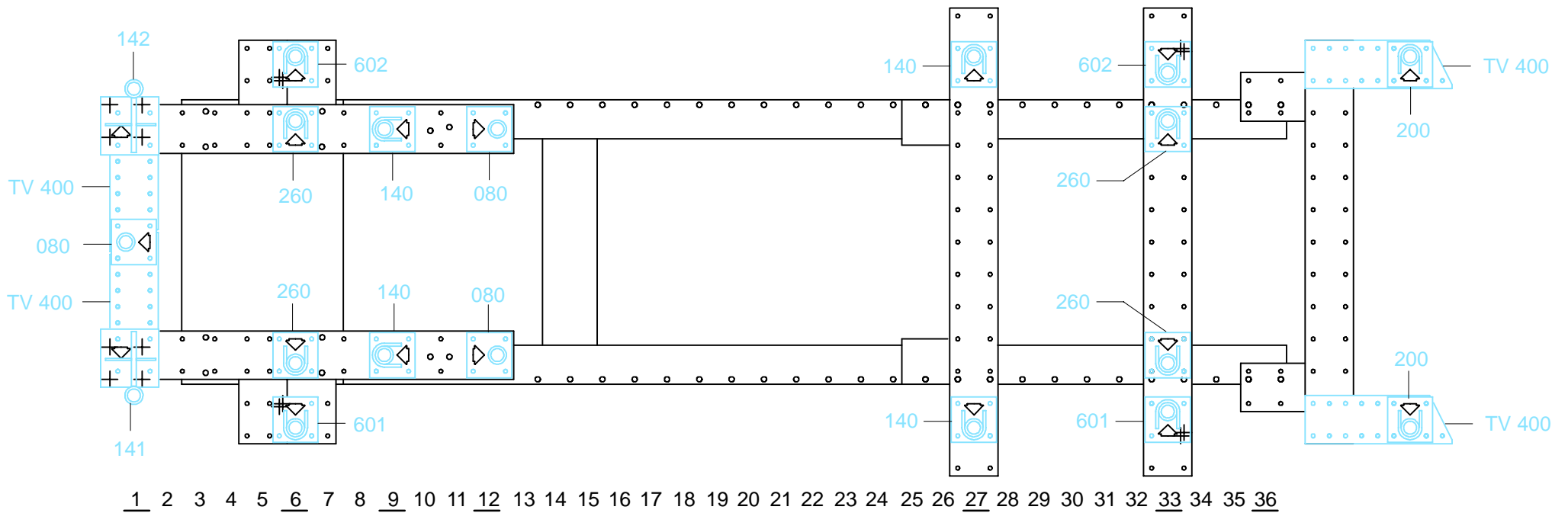
	M 10.125x60	2
	M 12x30	8
	M 12.125x70	2
	M 12.125x100	2
	M 12.125x130	2
	M 16	2
	LL 10	2

○ Avec ou sans mécanique
With or without mechanical elements
Con o senza parti meccaniche
Mit oder ohne Aggregate
Con ó sin mecanica desmontada

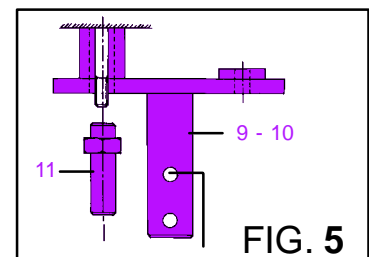
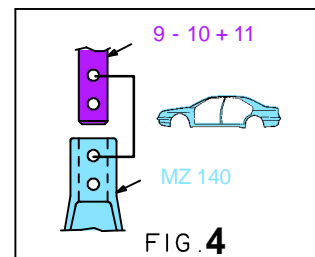
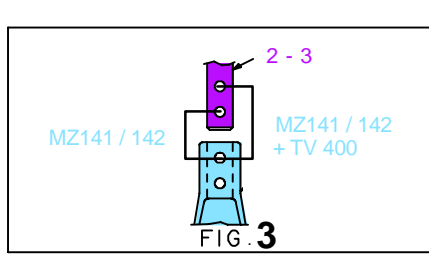
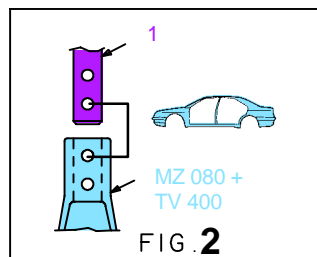
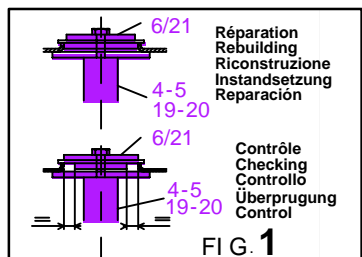
HYUNDAI

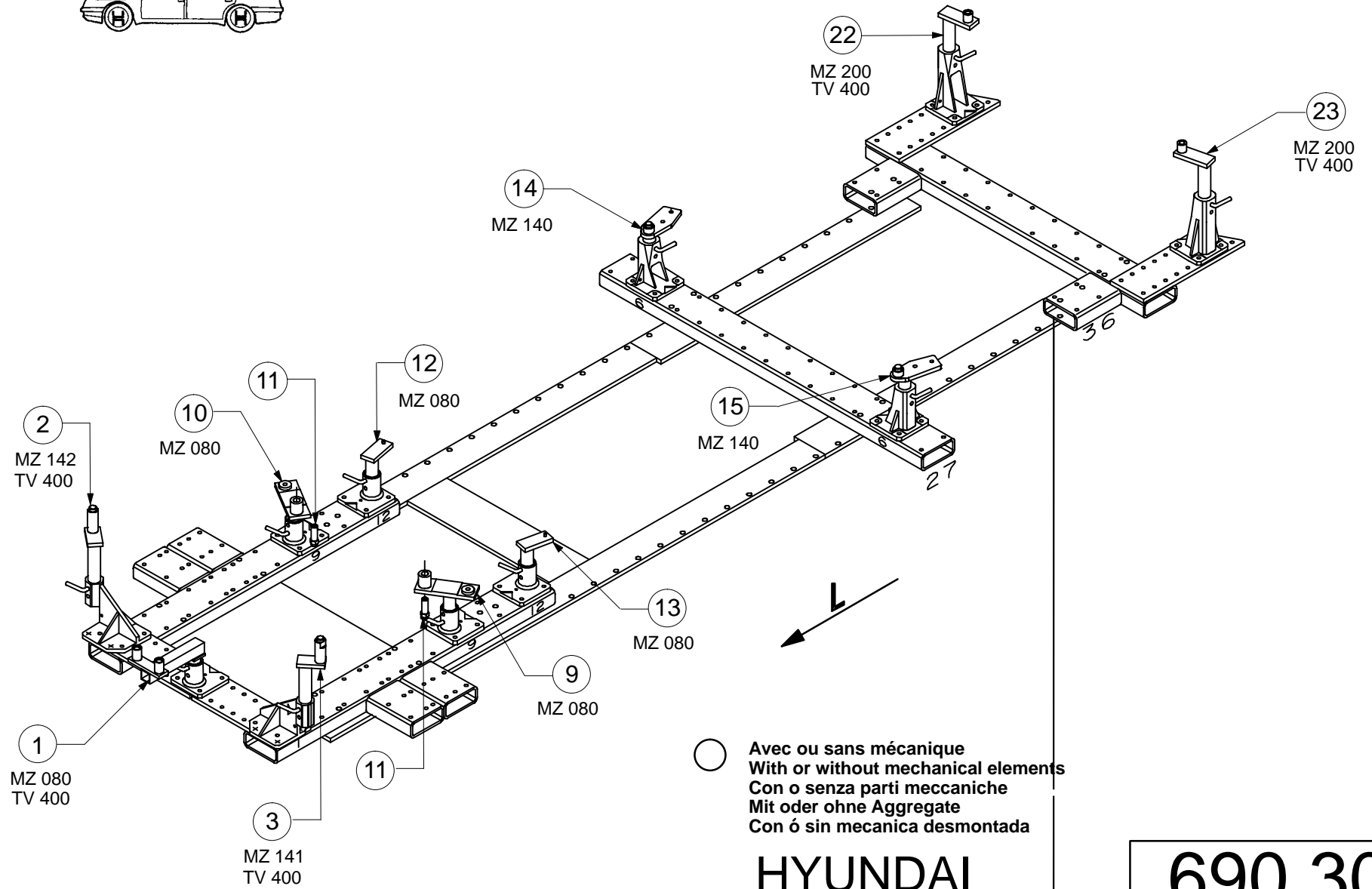
690.300

62 Kg 19.01.94 447-D-5A



1 2 3 4 5 6 7 8 9 10 11 12 13 14 15 16 17 18 19 20 21 22 23 24 25 26 27 28 29 30 31 32 33 34 35 36





690.300		
62 Kg	19.01.94	447-D-5B

