

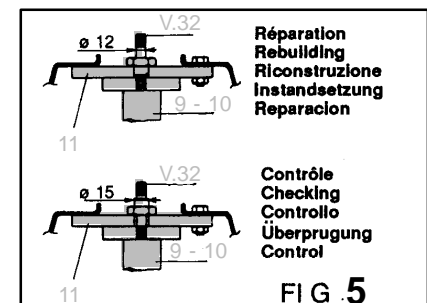
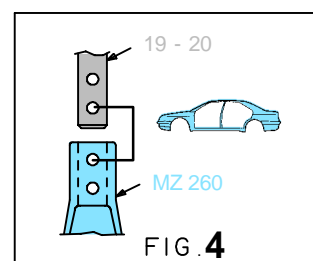
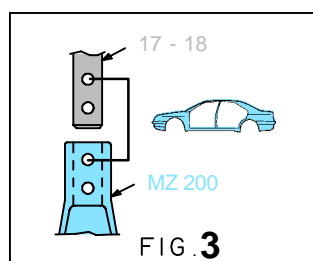
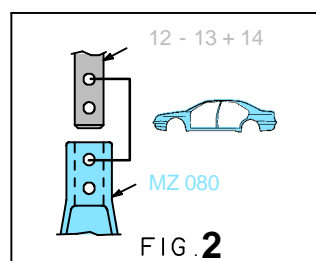
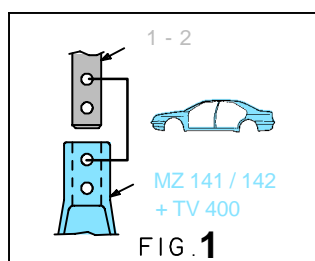
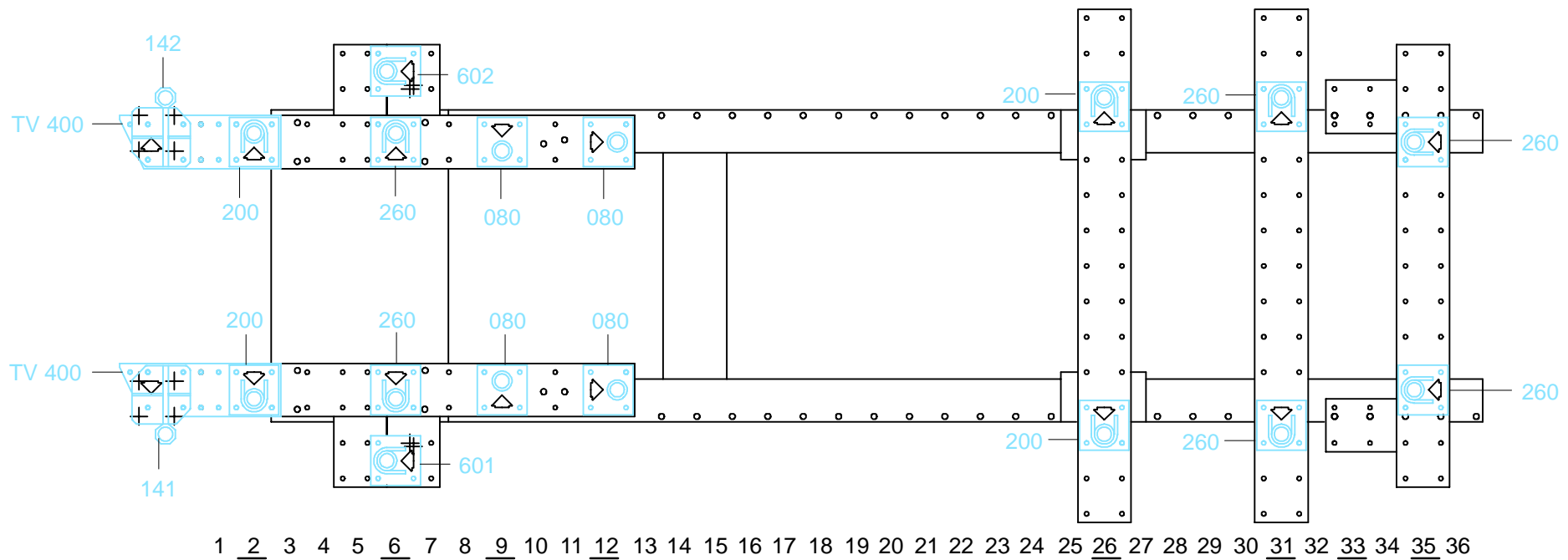
REP.	REFERENCE	PDS	NB	MZ
1	687.701	2,1	1	141
2	687.702	2,1	1	142
3	687.703	3,4	1	200
4	687.704	3,7	1	200
5	687.705	1,6	1	080/260
6	687.706	1,6	1	080/260
7	687.707	0,4	2	
8	687.708	1,3	2	
9	687.709	2,7	1	601
10	687.710	2,7	1	602
11	687.711	1,1	2	
12	687.712	2,3	1	080
13	687.713	2,3	1	080
14	687.714	0,3	2	
15	687.715	2,1	1	080
16	687.716	2,1	1	080
17	687.717	2,1	1	140/200
18	687.718	2,1	1	140/200
19	687.719	2,5	1	260
20	687.720	2,5	1	260
21	687.721	1,1	1	
22	687.722	1,1	1	
23	687.723	2,2	1	260
24	687.724	2,2	1	260
	V.32	0,1	2	

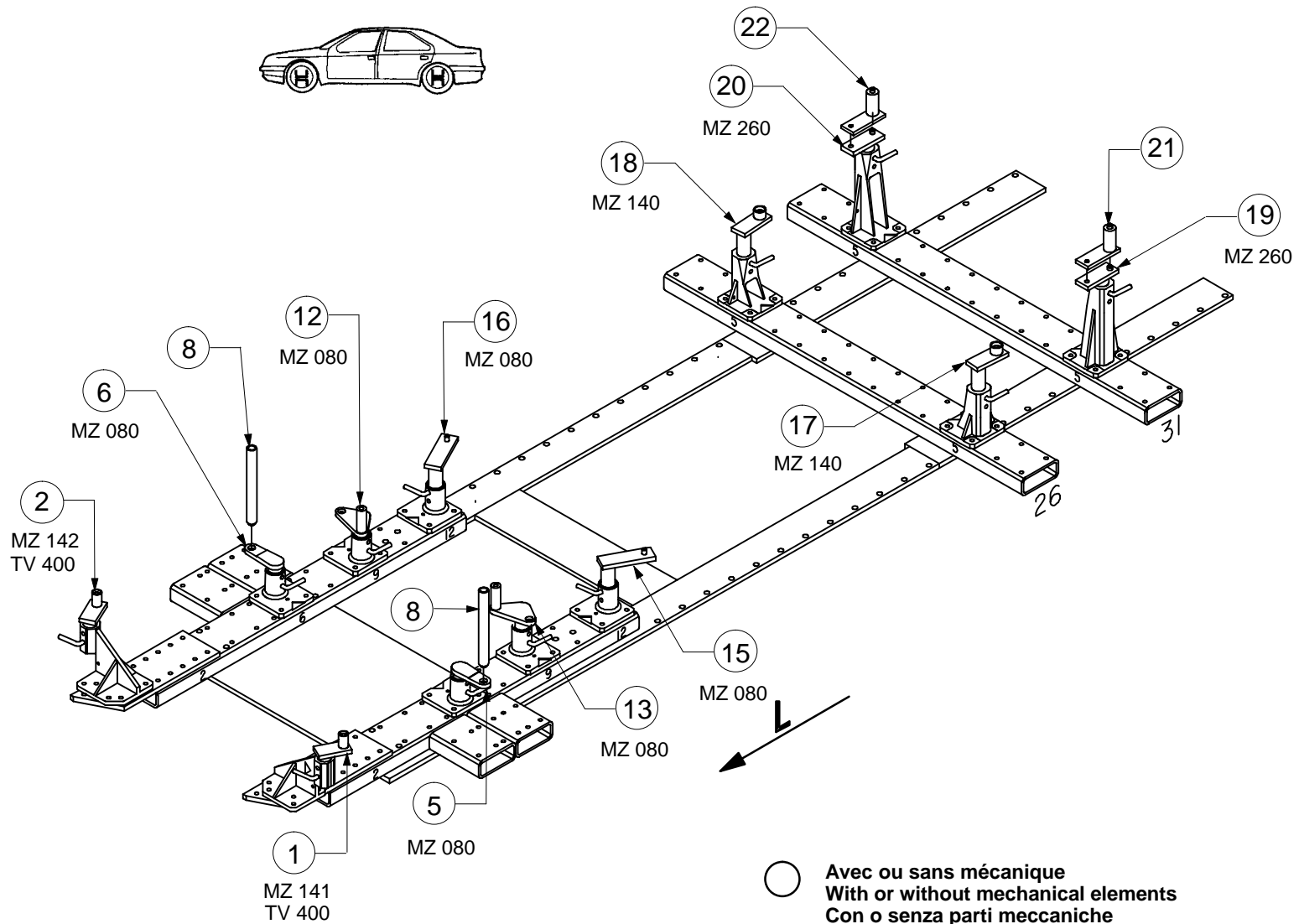
	M 10.125x30	4
	M 10.125x70	2
	M 12x25	2
	M 12x30	10
	M 12.125x20	2
	M 12.125x50	2
	M 12.125x110	4
	M 12.125x120	2

	M 12	10
	M 12	2

## 687.300

52 Kg    13.12.93    411-D-16A





○ Avec ou sans mécanique  
 With or without mechanical elements  
 Con o senza parti meccaniche  
 Mit oder ohne Aggregate  
 Con ó sin mecanica desmontada

## FIAT

# 687.300

52 Kg | 18.11.93 | 411-D-16B

