

REP.	REFERENCE	PDS	NB	MZ
1	682.701	2,0	1	140
2	682.702	2,0	1	140
3	682.703	0,2	2	
4	682.704	0,02	2	
5	682.705	2,9	1	141
6	682.706	2,7	1	142
7	682.707	2,0	1	200
8	682.708	2,0	1	200
9	682.709	2,5	1	260/080
10	682.710	2,5	1	260/080
11	682.711	0,8	2	
12	682.712	3,4	1	602
13	682.713	3,4	1	601
14	682.714	0,3	2	
15	682.715	2,9	1	260
16	682.716	2,9	1	260
17	682.717	2,6	1	080
18	682.718	2,6	1	080
19	682.719	1,9	1	200
20	682.720	2,0	1	200
21	682.721	2,3	1	140/080
22	682.722	2,3	1	140/080
23	682.723	1,2	1	
24	682.724	1,2	1	
25	682.725	2,8	1	200
26	682.726	2,8	1	200
27	682.727	2,8	1	260
28	682.728	2,8	1	260
29	682.729	0,02	2	
30	682.730	2,3	1	260
31	682.731	3,0	1	260

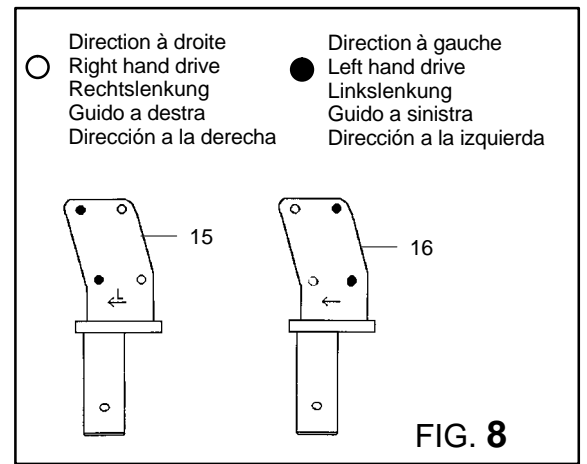
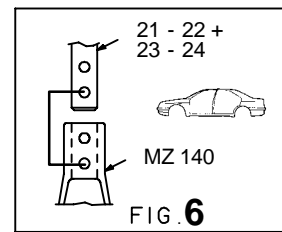
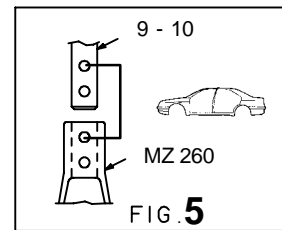
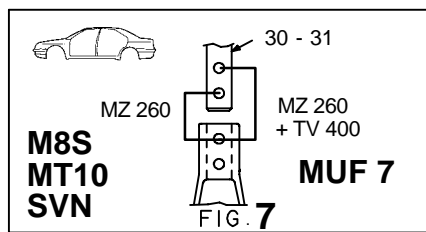
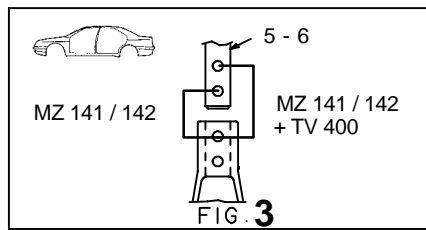
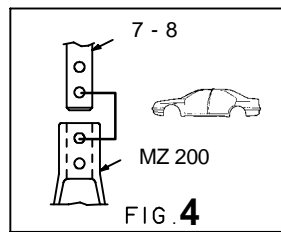
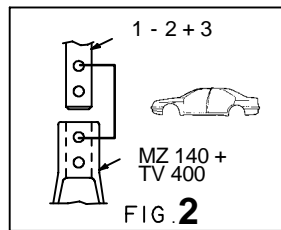
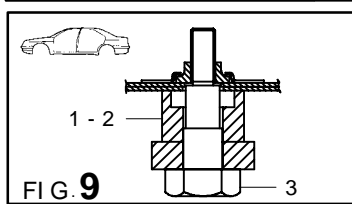
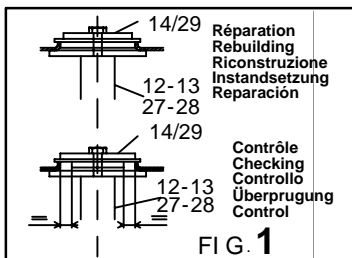
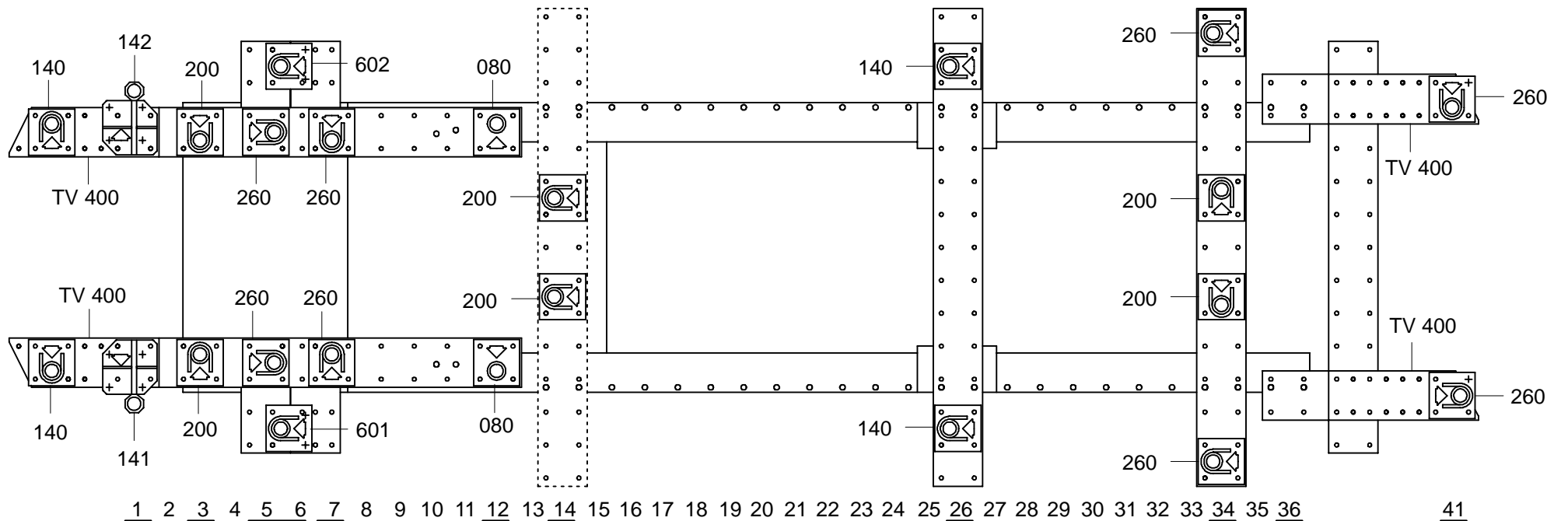
	M 8x55	1
	M 10x100	4
	M 10.125x25	6
	M 10.125x30	4
	M 10.125x35	2
	M 10.125x60	1
	M 12x25	8
	M 14.150x30	2
	M 14.150x60	2
	M 14.150x110	2
M 14.150x150	4	
	M 8	1
	M 10	4

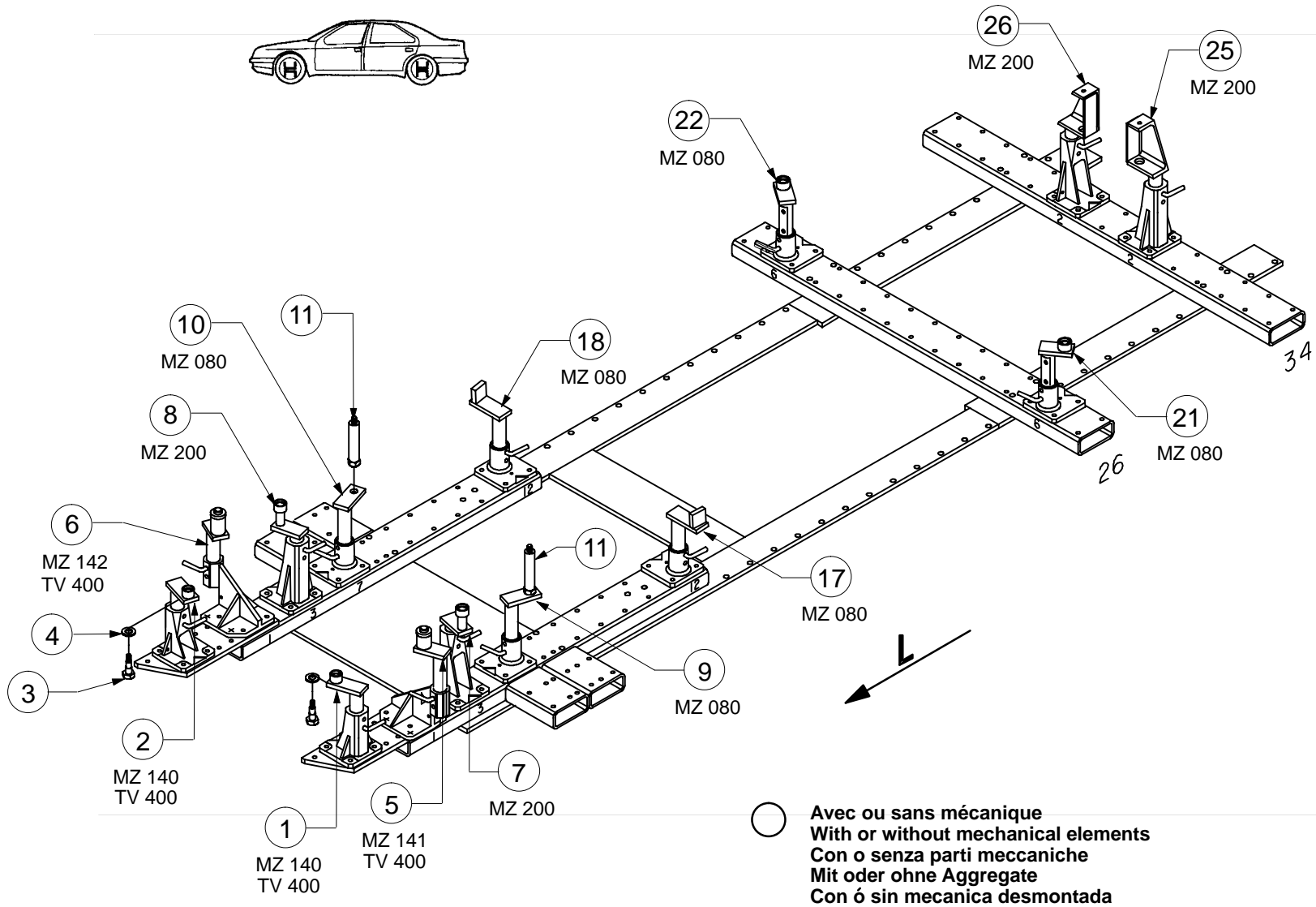
○ Avec ou sans mécanique  
With or without mechanical elements  
Con o senza parti meccaniche  
Mit oder ohne Aggregate  
Con ó sin mecanica desmontada

## OPEL / VAUXHALL

# 682.300

68 Kg    15.02.94    422-D-16A





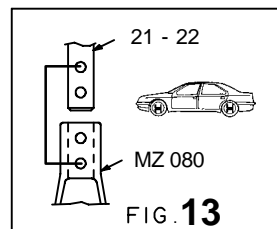
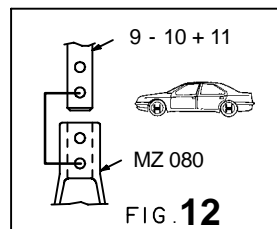
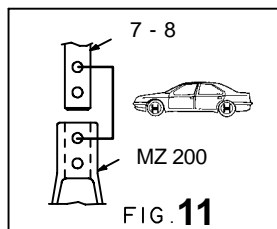
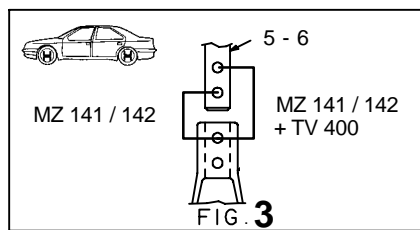
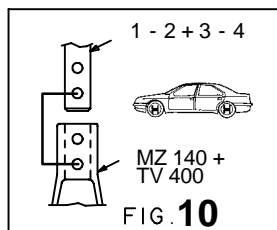
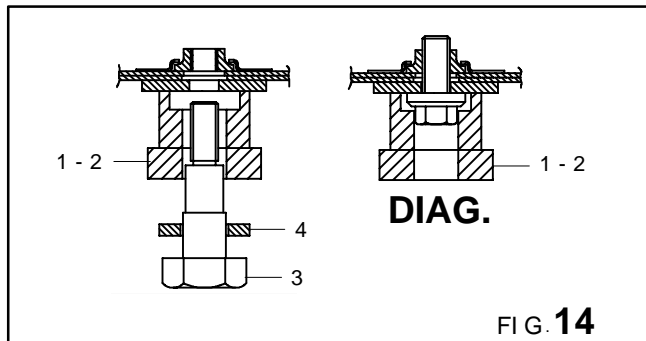
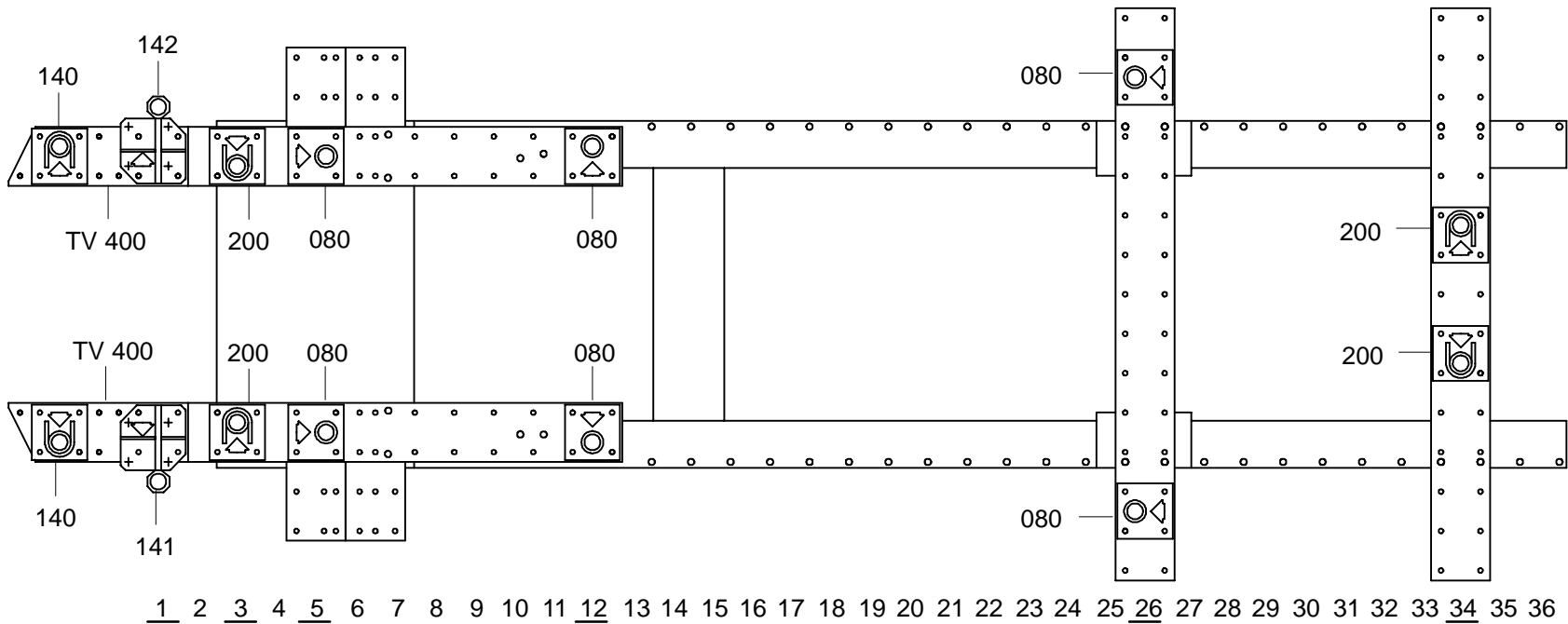
OPEL / VAUXHALL

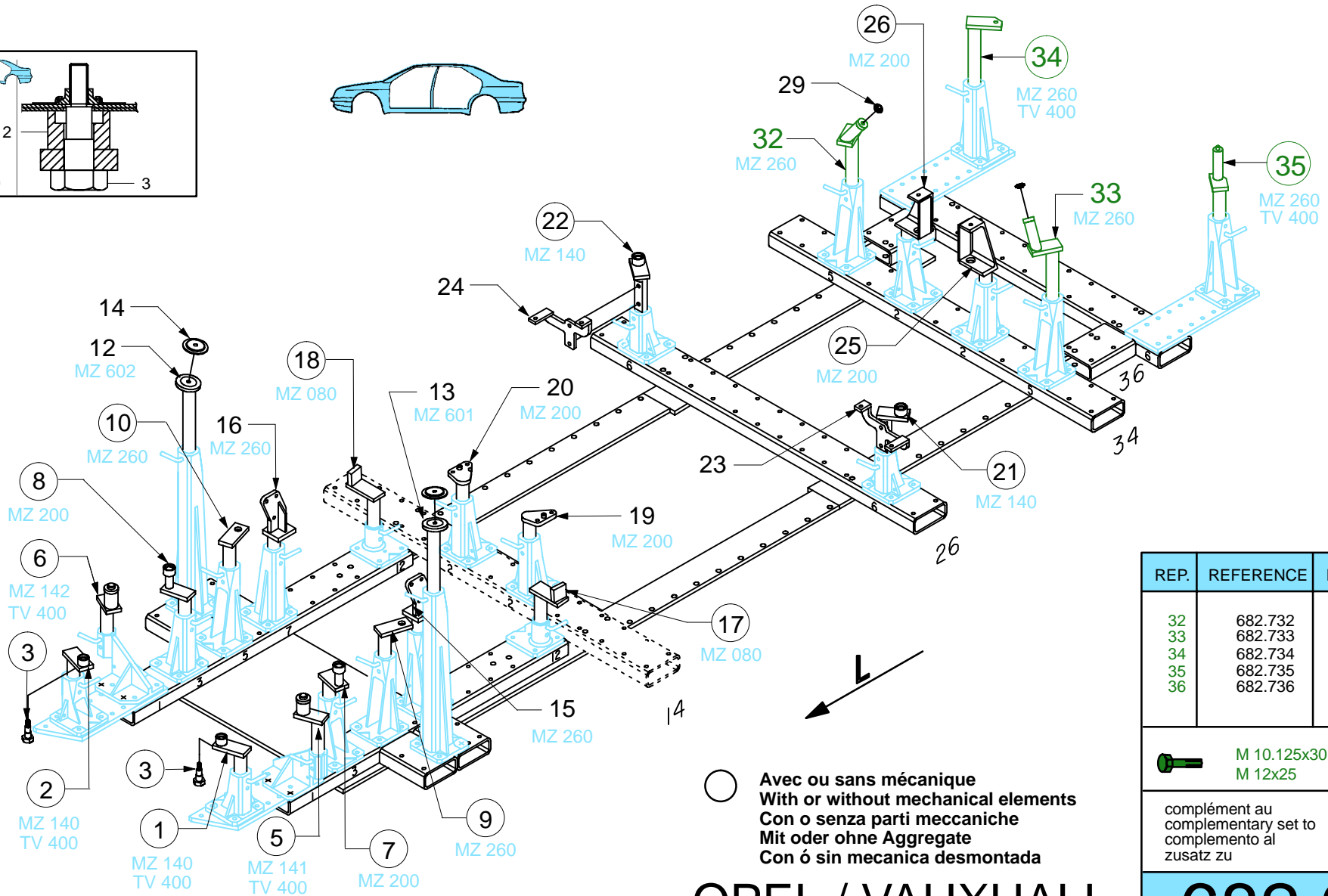
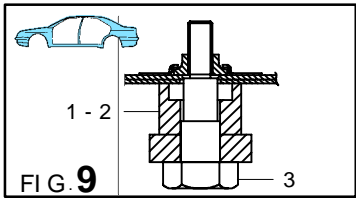
**682.300**

68 Kg

15.02.94

422-D-16B





○ Avec ou sans mécanique  
 With or without mechanical elements  
 Con o senza parti meccaniche  
 Mit oder ohne Aggregate  
 Con ó sin mecanica desmontada

REP.	REFERENCE	PDS	NB	MZ
32	682.732	3,2	1	260
33	682.733	3,2	1	260
34	682.734	3,6	1	260
35	682.735	3,1	1	260
36	682.736	0,3	1	260

	M 10.125x30	1
	M 12x25	1

complément au  
 complementary set to  
 complemento al  
 zusatz zu

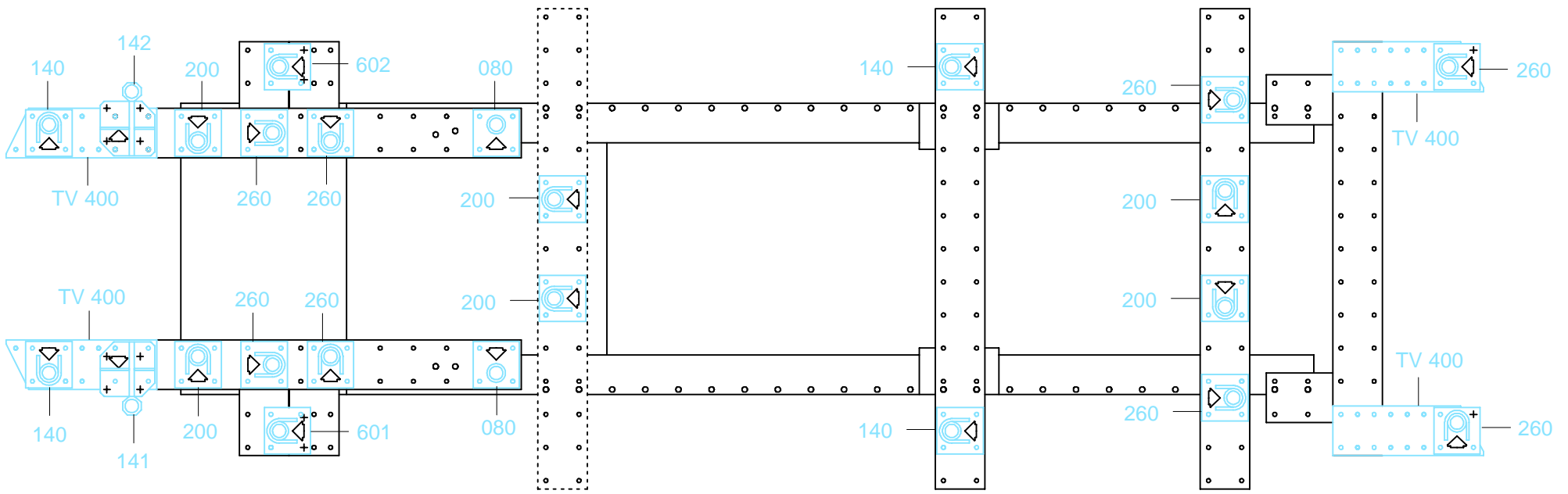
**682.300**

---

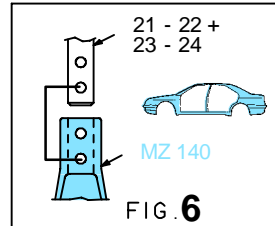
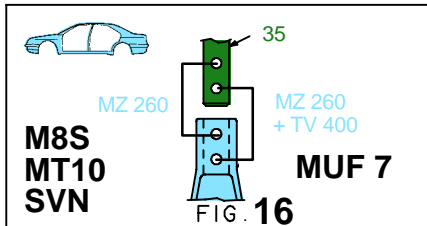
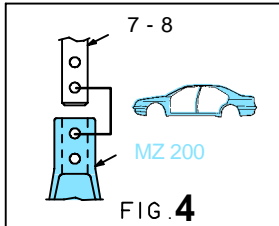
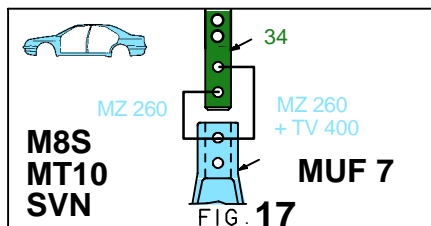
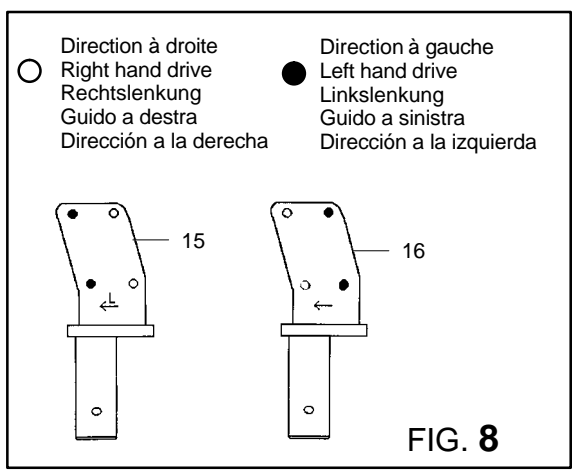
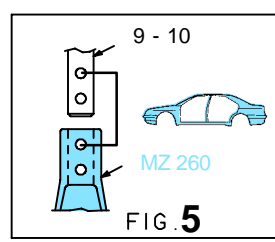
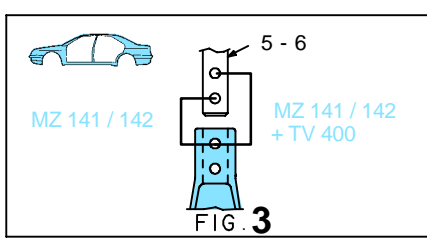
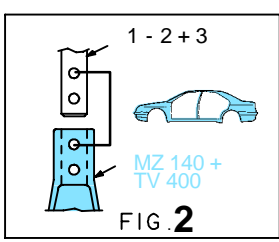
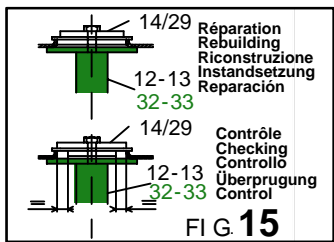
**682.309**

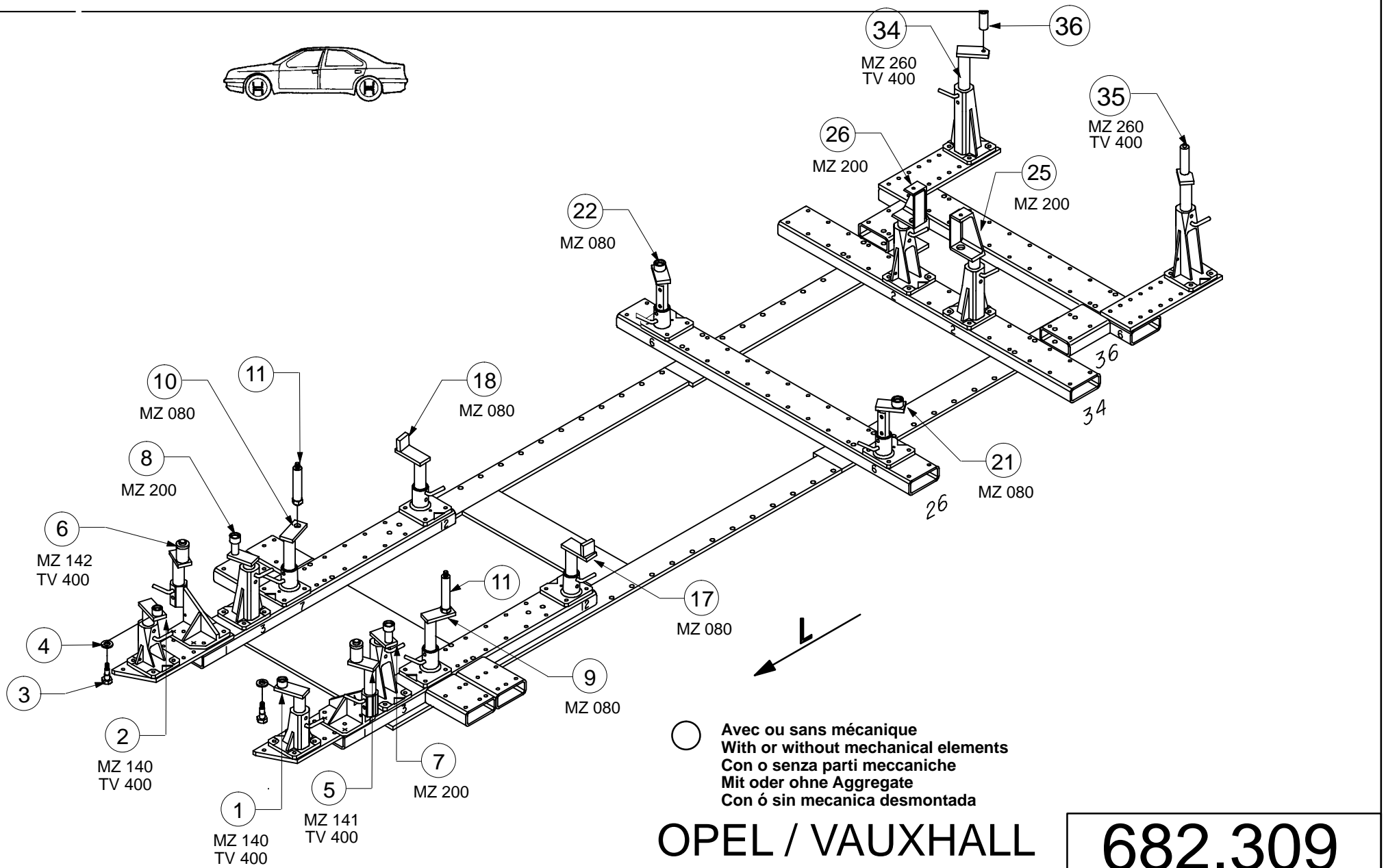
14 Kg	03.10.94	422-D-16C
-------	----------	-----------

## OPEL / VAUXHALL



1 2 3 4 5 6 7 8 9 10 11 12 13 14 15 16 17 18 19 20 21 22 23 24 25 26 27 28 29 30 31 32 33 34 35 36 41





## OPEL / VAUXHALL

# 682.309

14 Kg    03.10.94    422-D-16D

