

○ Avec ou sans mécanique  
 With or without mechanical elements  
 Con o senza parti meccaniche  
 Mit oder ohne Aggregate  
 Con ó sin mecanica desmontada

## RENAULT

REP.	REFERENCE	PDS	NB	MZ
1	675.701	2,9	1	
2	675.702	2,9	1	
3	675.703	0,2	4	
4	675.704	0,3	2	
5	675.705	2,7	1	142
6	675.706	2,7	1	141
7	675.707	0,3	2	
8	675.708	3,0	1	601
9	675.709	3,1	1	260
10	675.710	3,4	1	602
11	675.711	3,4	1	601
12	675.712	1,4	1	
13	675.713	1,4	1	
14	675.714	2,4	1	260/080
15	675.715	2,4	1	260/080
16	675.716	0,1	2	
17	675.717	1,6	1	140/080
18	675.718	1,6	1	140/080
19	675.719	0,1	2	
20	675.720	0,1	2	
21	675.721	2,4	1	080
22	675.722	2,4	1	080
23	675.723	1,6	1	080
24	675.724	1,6	1	080
25	675.725	2,3	1	080
26	675.726	2,3	1	080
27	675.727	0,3	2	
28	675.728	0,1	2	
29	675.729	2,6	1	200
30	675.730	2,6	1	200
31	675.731	3,3	1	200
32	675.732	3,3	1	200
33	675.733	1,0	2	
34	675.734 V.32	0,9	1	
		0,1	2	

🔑	M 8x25	14
	M 8x80	2
	M 8x100	2
	M 10x30	2
	M 12x16	2
	M 12x20	4
	M 12x30	2
	M 12x40	4
	M 12x45	4
	M 14x130	2

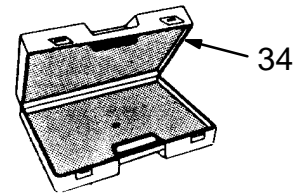
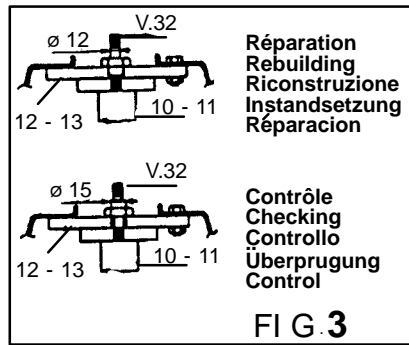
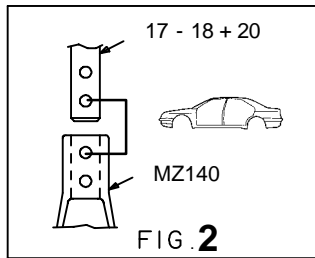
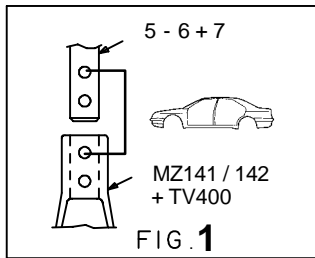
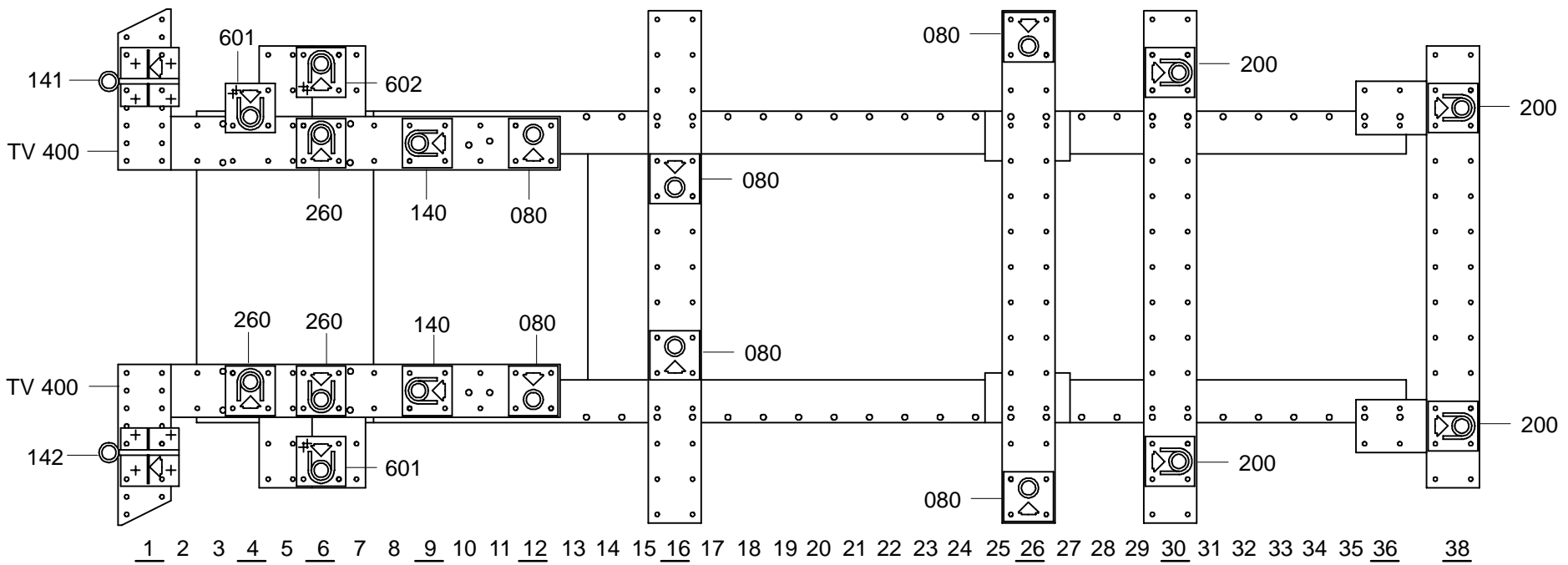
🌀	M 8	4
	M 12	14
	M 14	2

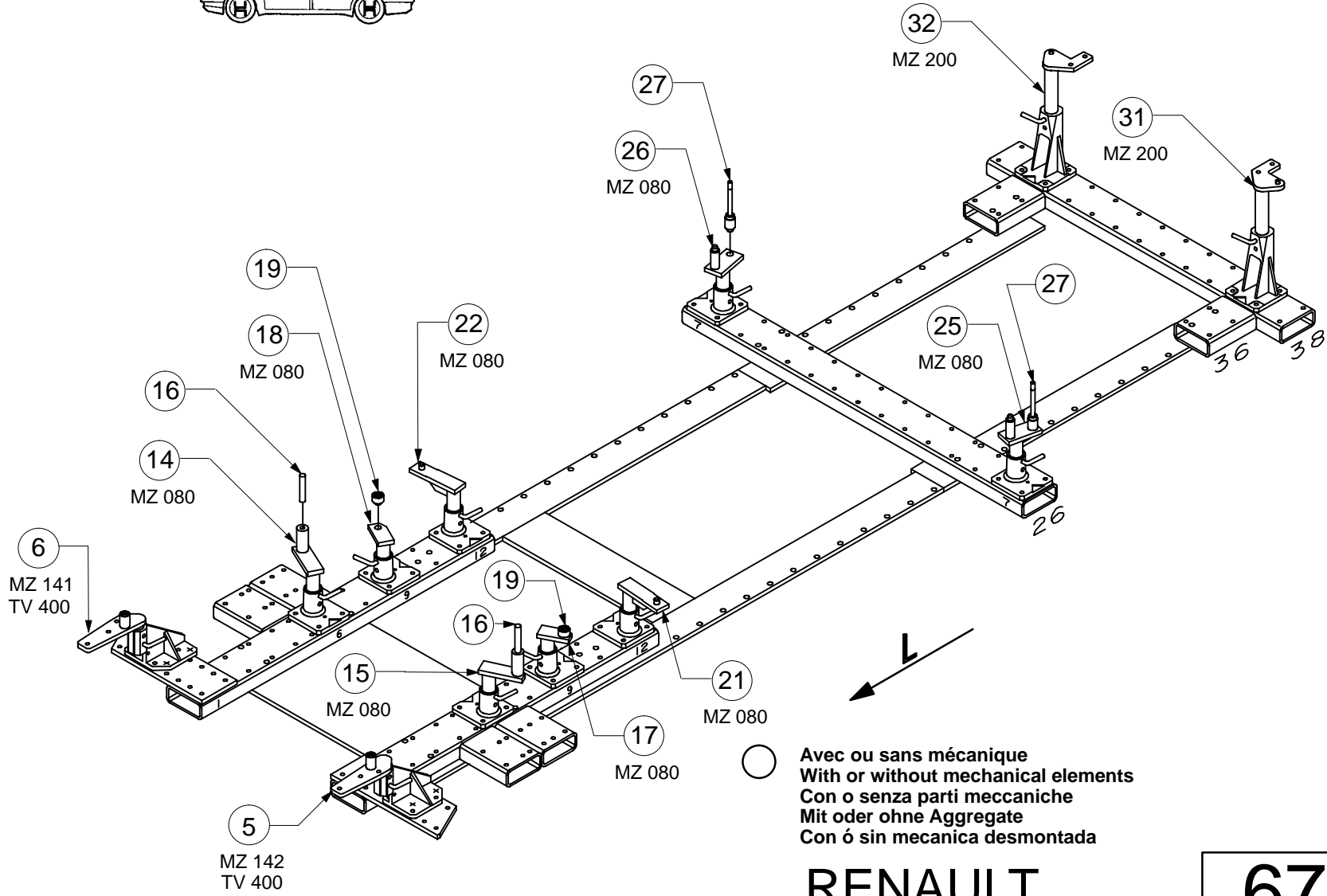
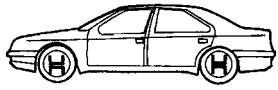
  

🌀	M 12	4
	L 12	2

<h1>675.300</h1>		
67 Kg	31.08.93	427-D-22A





**RENAULT**

**675.300**

67 Kg    31.08.93    427-D-22B

