

○ Avec ou sans mécanique
 With or without mechanical elements
 Con o senza parti meccaniche
 Mit oder ohne Aggregate
 Con ó sin mecanica desmontada

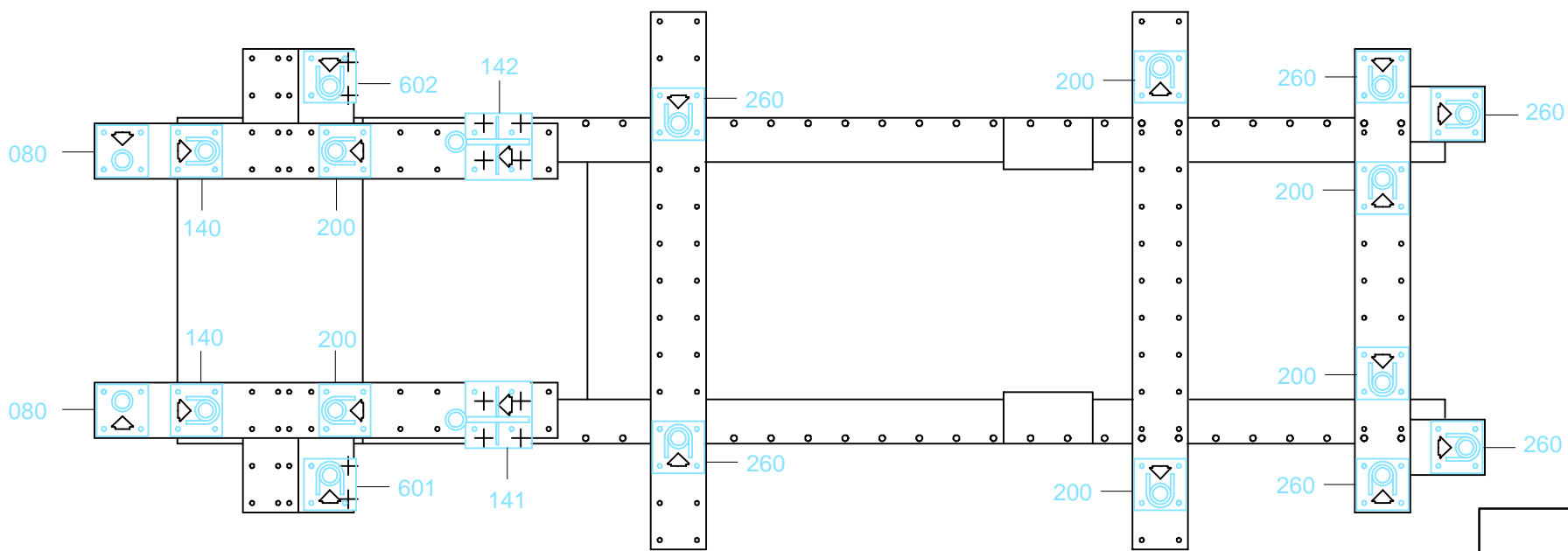
NISSAN

REP.	REFERENCE	PDS	NB	MZ
1	666.701	2,5	1	080
2	666.702	2,5	1	080
3	666.703	2,4	1	140
4	666.704	2,4	1	140
5	666.705	0,1	2	
6	666.706	3,0	1	602
7	666.707	3,0	1	601
8	666.708	0,6	2	
9	666.709	2,0	1	200
10	666.710	2,0	1	200
11	666.711	2,5	1	141
12	666.712	2,5	1	142
13	666.713	3,3	1	260
14	666.714	3,3	1	260
15	666.715	1,7	1	080/140/ 200
16	666.716	1,7	1	080/140/ 200
17	666.717	0,4	2	
18	666.718	0,4	2	
19	666.719	3,1	1	260
20	666.720	3,1	1	260
21	666.721	2,5	1	200
22	666.722	2,5	1	200
23	666.723	3,1	1	260
24	666.724	3,1	1	260

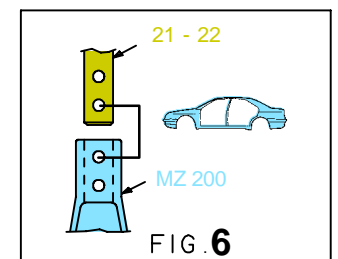
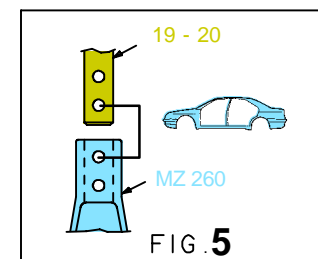
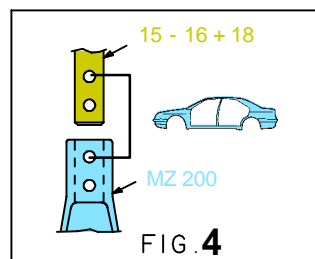
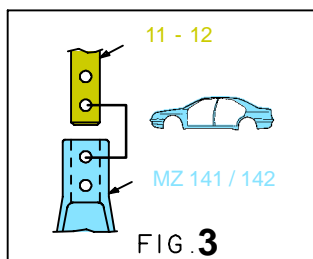
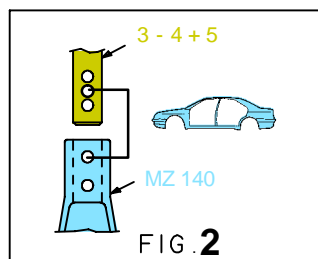
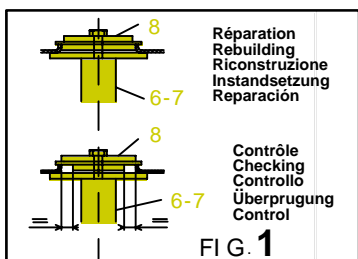
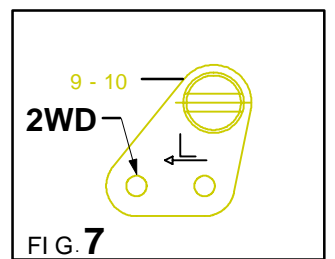
	M 12x30	2
	M 12.125x20	2
	M 12.125x35	6
	M 12.125x100	2
	M 14.150x90	4
	M 12	2

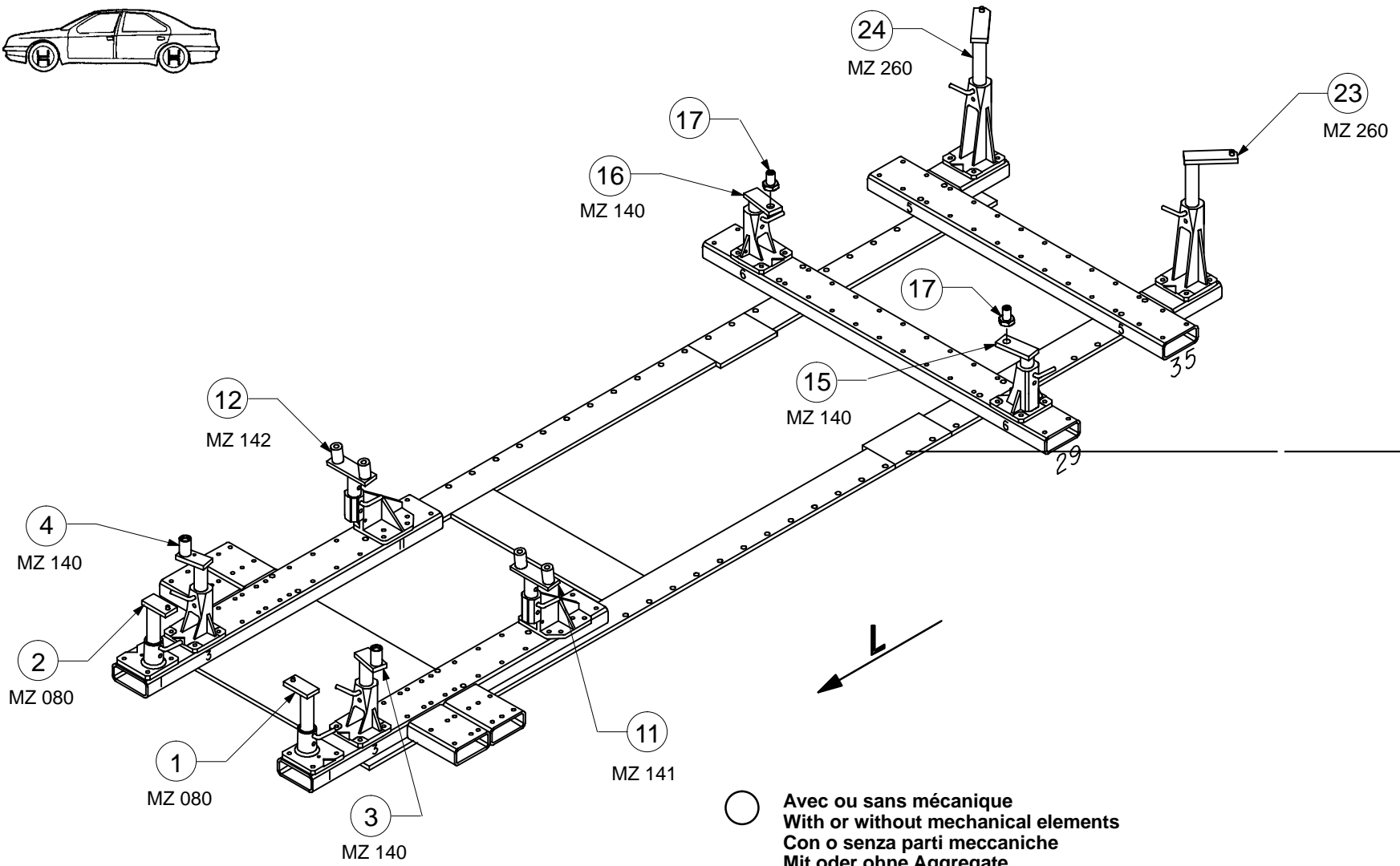
666.300

56 Kg 24.02.93 410-D-52A



1 2 3 4 5 6 7 8 9 10 11 12 13 14 15 16 17 18 19 20 21 22 23 24 25 26 27 28 29 30 31 32 33 34 35 36



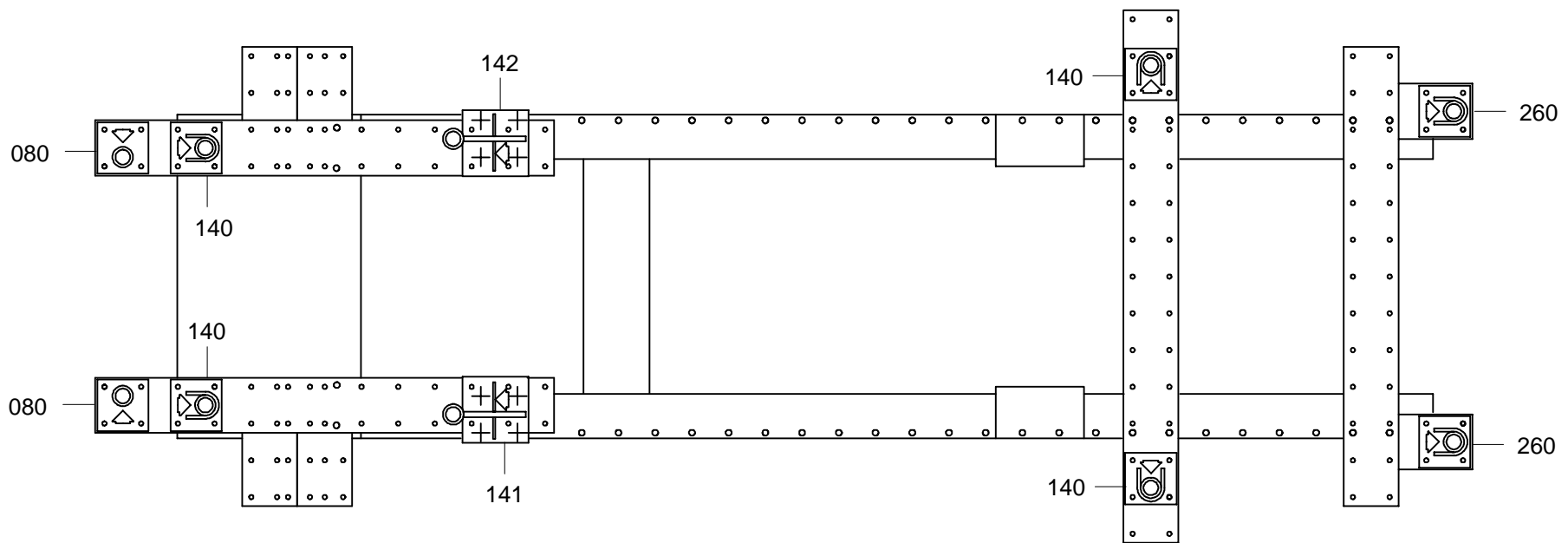


○ Avec ou sans mécanique
With or without mechanical elements
Con o senza parti meccaniche
Mit oder ohne Aggregate
Con ó sin mecanica desmontada

NISSAN

666.300

56 Kg 24.02.93 410-D-52B



1 2 3 4 5 6 7 8 9 10 11 12 13 14 15 16 17 18 19 20 21 22 23 24 25 26 27 28 29 30 31 32 33 34 35 36

