

○ Avec ou sans mécanique
 With or without mechanical elements
 Con o senza parti meccaniche
 Mit oder ohne Aggregate
 Con ó sin mecanica desmontada

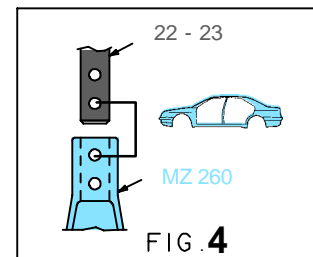
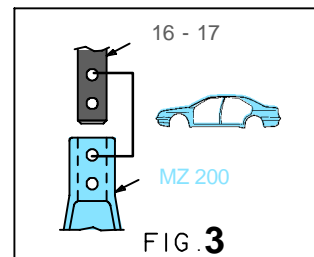
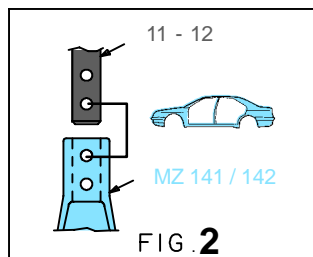
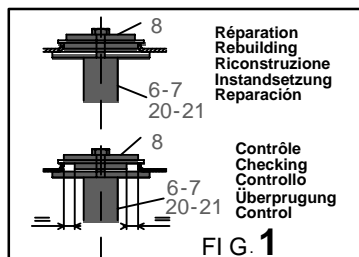
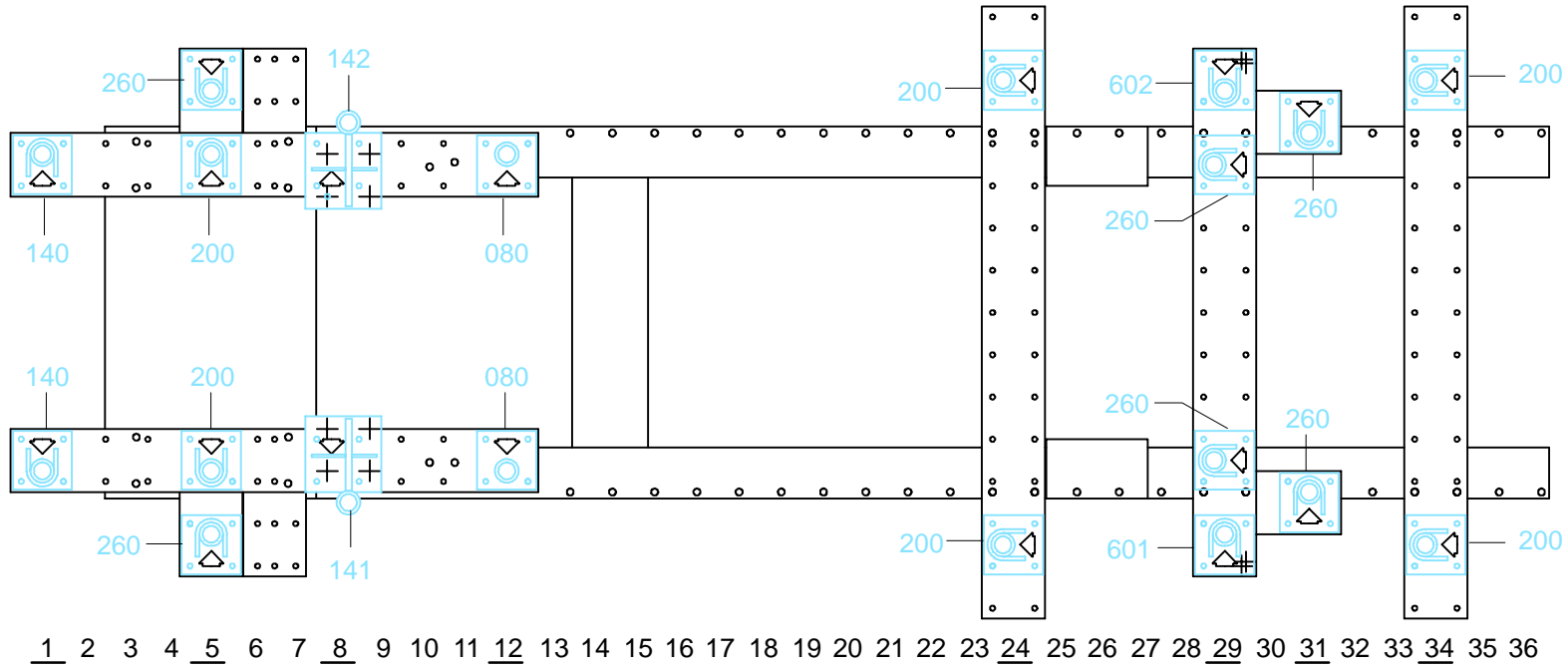
MAZDA

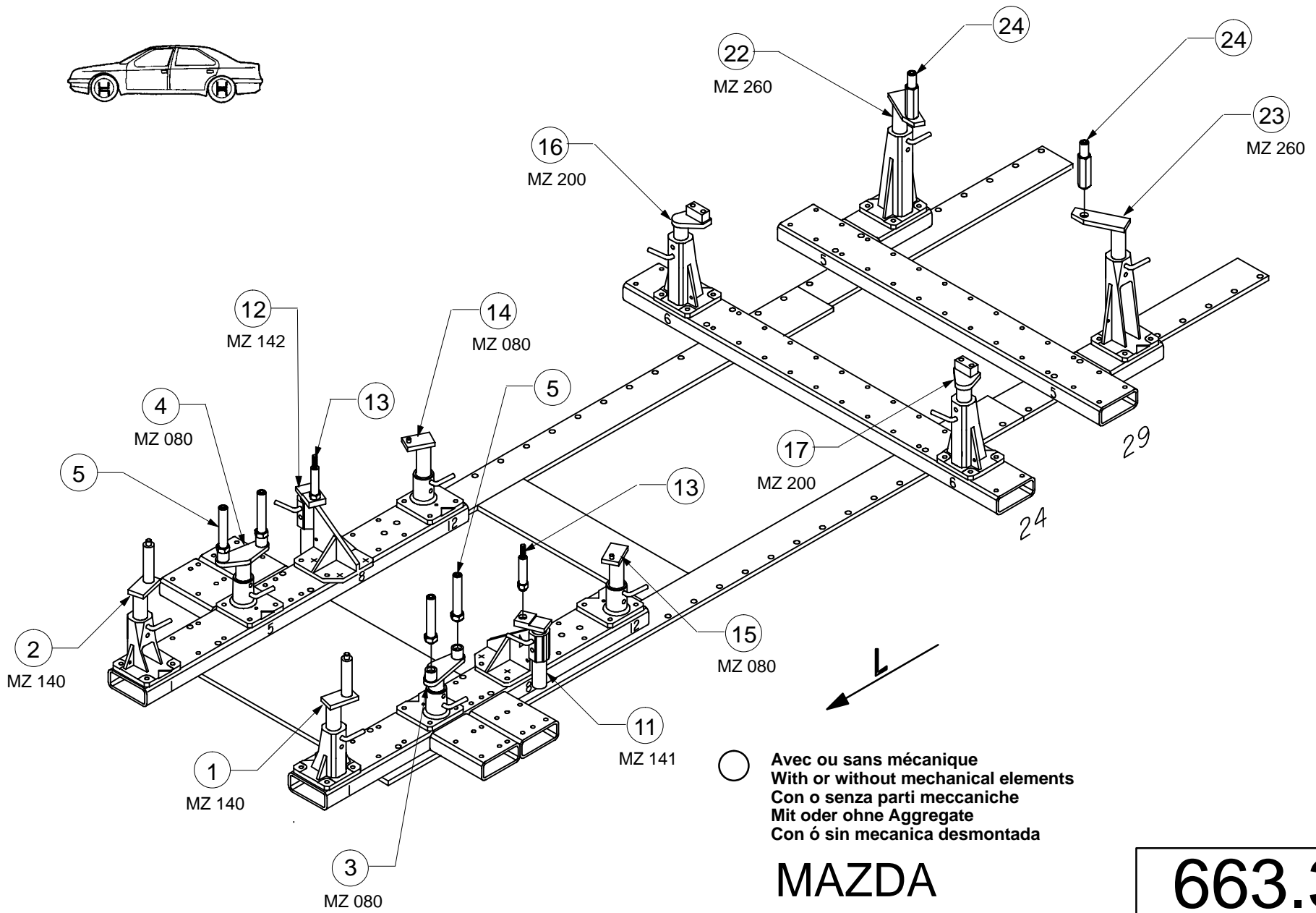
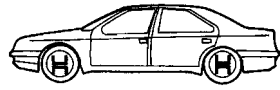
REP.	REFERENCE	PDS	NB	MZ
1	663.701	2,5	1	140
2	663.702	2,5	1	140
3	663.703	2,3	1	200/080
4	663.704	2,3	1	200/080
5	663.705	0,9	4	
6	663.706	4,8	1	260
7	663.707	4,8	1	260
8	663.708	0,1	4	
9	663.709	2,5	1	
10	663.710	2,5	1	
11	663.711	2,5	1	141
12	663.712	2,5	1	142
13	663.713	0,8	2	
14	663.714	2,0	1	080
15	663.715	2,0	1	080
16	663.716	2,2	1	200
17	663.717	2,2	1	200
18	663.718	3,6	1	260
19	663.719	3,6	1	260
20	663.720	2,9	1	602
21	663.721	2,9	1	601
22	663.722	3,8	1	260
23	663.723	3,8	1	260
24	663.724	1,2	2	
25	663.725	4,5	1	200
26	663.726	4,5	1	200

M 12x30	4
M 12x40	4
M 12.125x20	2
M 12.125x35	2
M 12.125x45	2
M 12.125x50	4
M 12.125x60	4
M 12.125x70	4

663.300

76 Kg 21.04.93 419-D-21A

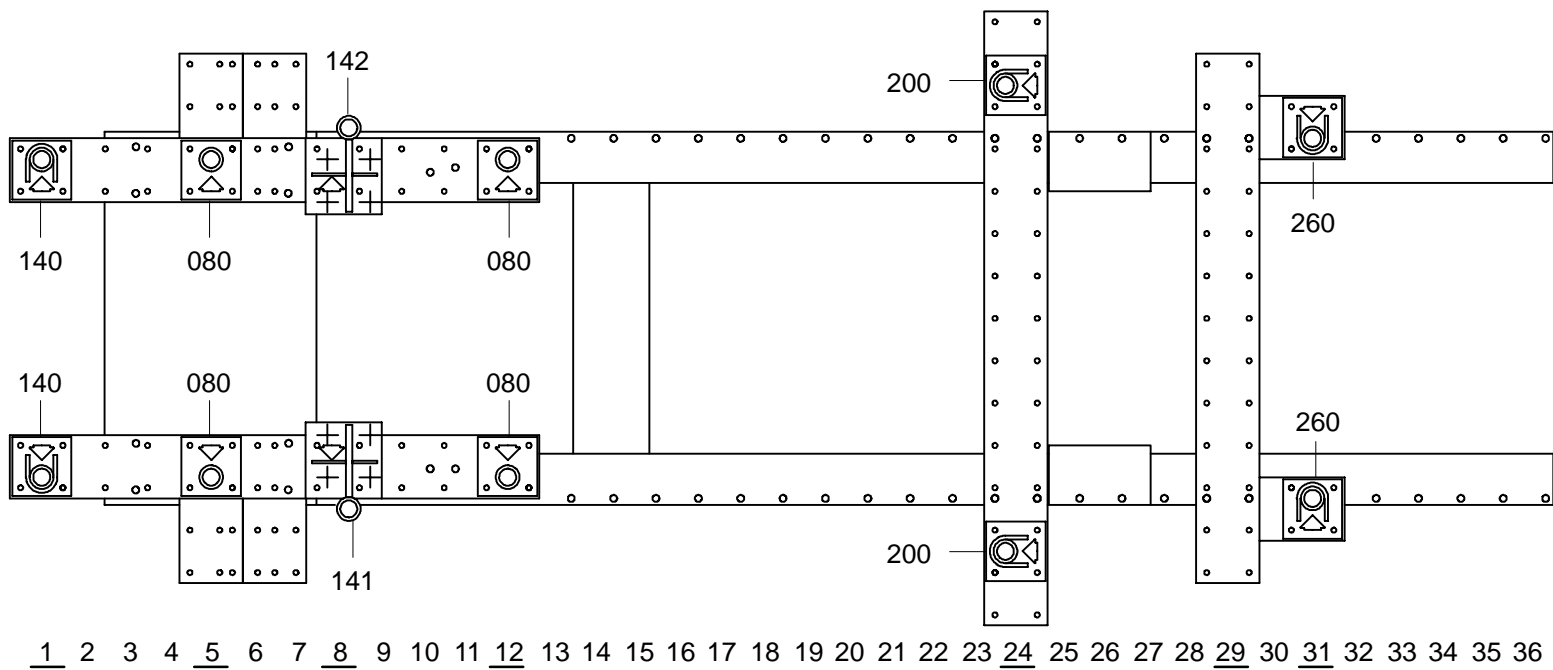




MAZDA

663.300

76 Kg 21.04.93 419-D-21B



1 2 3 4 5 6 7 8 9 10 11 12 13 14 15 16 17 18 19 20 21 22 23 24 25 26 27 28 29 30 31 32 33 34 35 36

