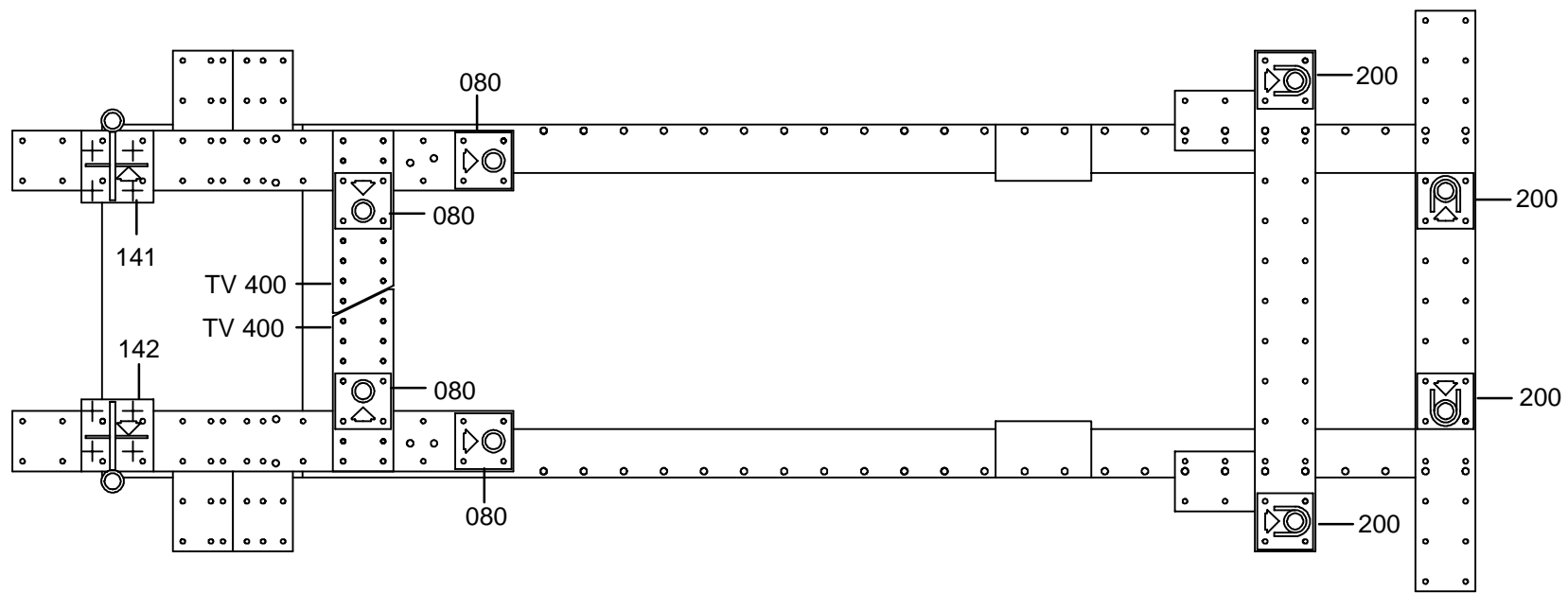


○ Avec ou sans mécanique  
 With or without mechanical elements  
 Con o senza parti meccaniche  
 Mit oder ohne Aggregate  
 Con ó sin mecanica desmontada

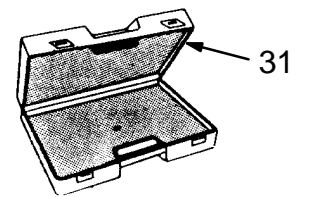
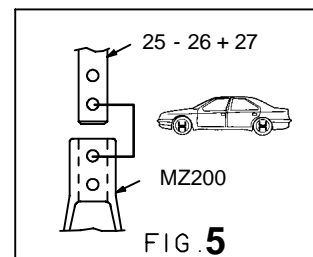
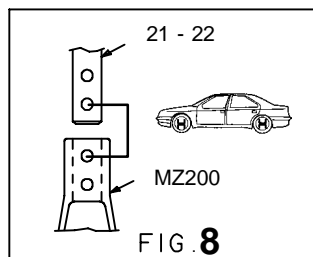
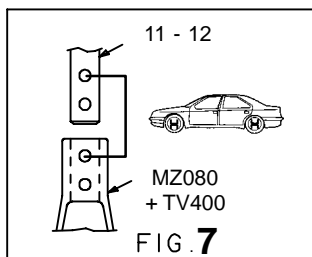
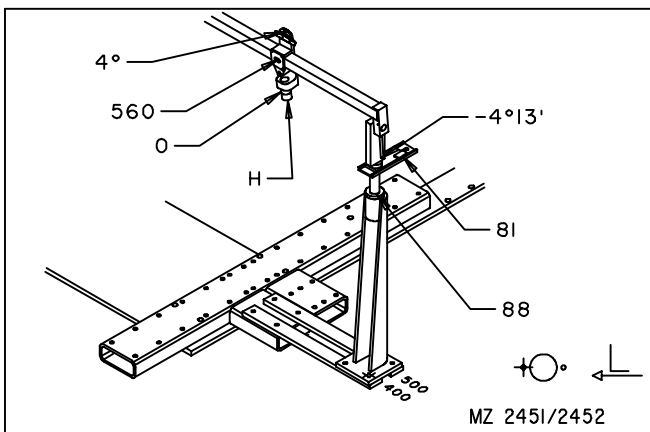
**PEUGEOT**

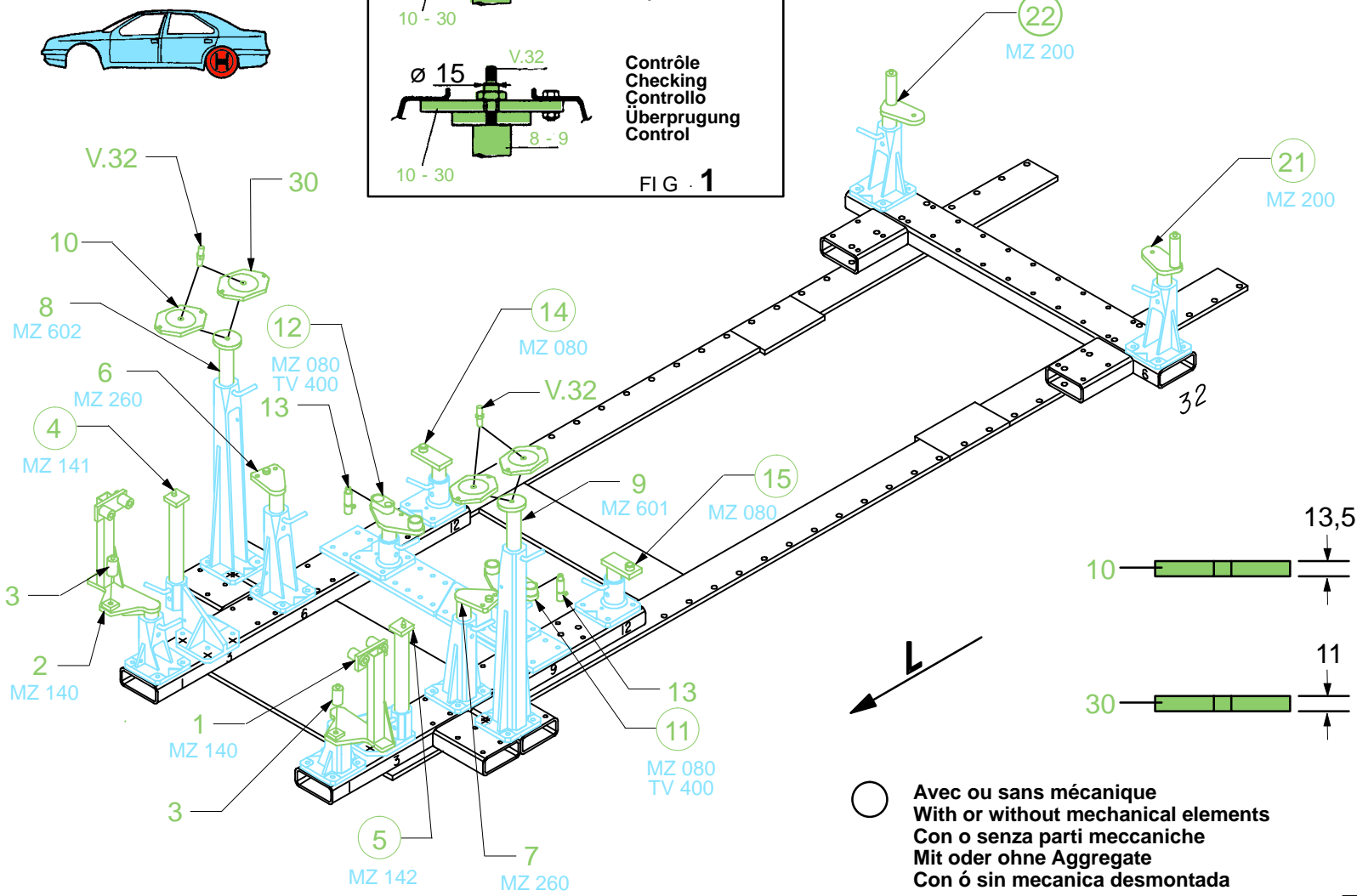
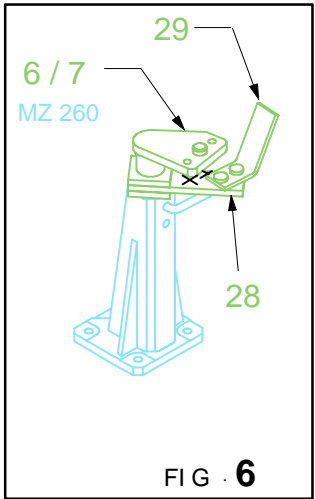
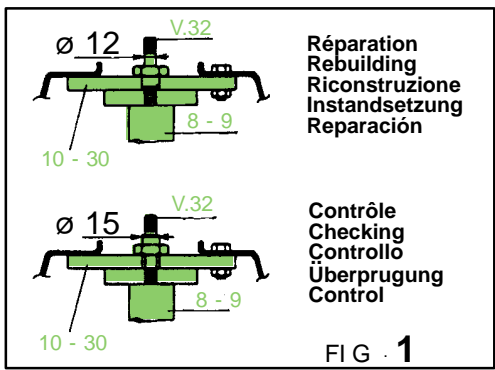
**655.320**

78 Kg | 10.02.95 | 423-D-14S



1 2 3 4 5 6 7 8 9 10 11 12 13 14 15 16 17 18 19 20 21 22 23 24 25 26 27 28 29 30 31 32 33 34 35 36





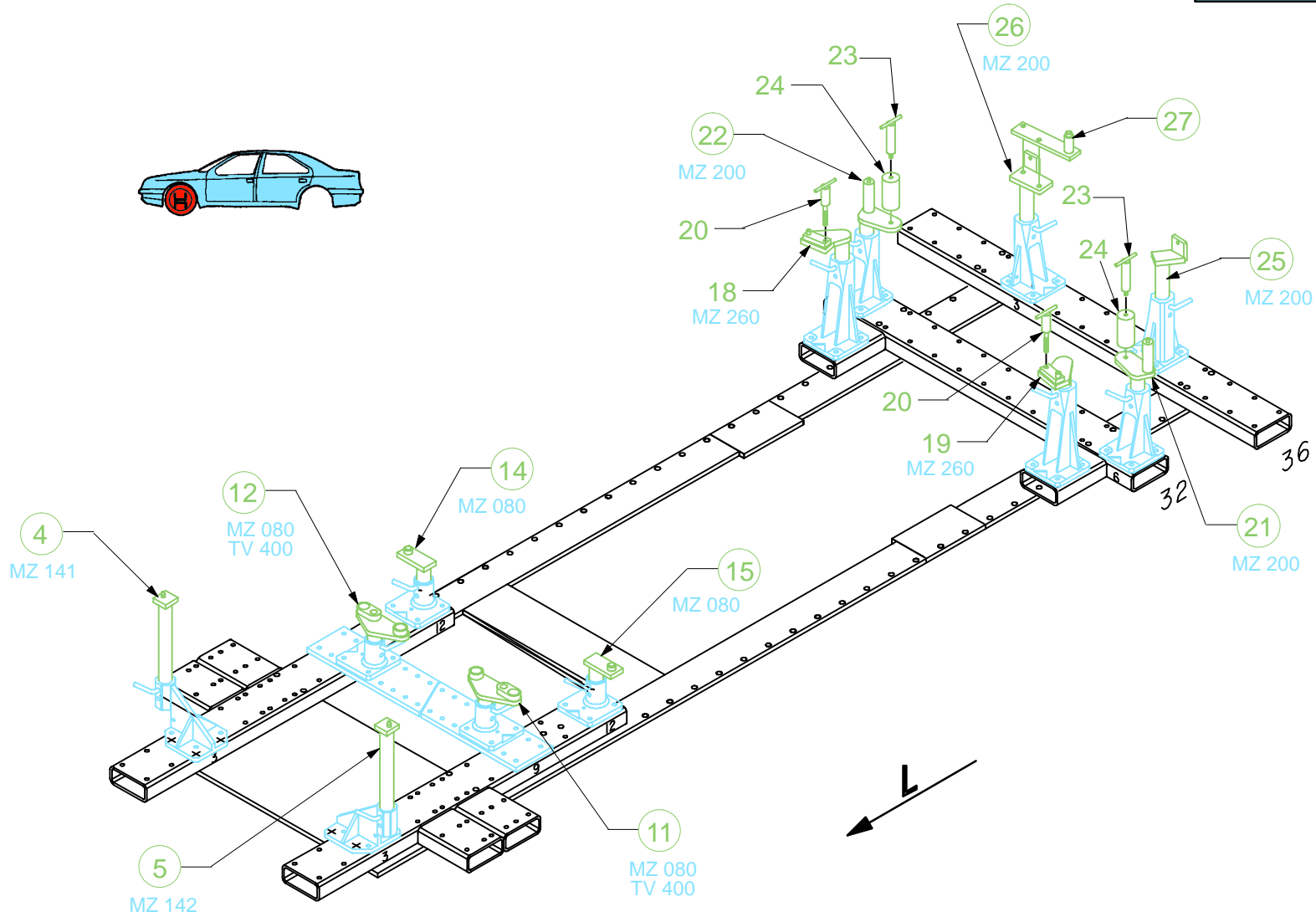
Rep.	Mod.
10	
30	

○ Avec ou sans mécanique  
 With or without mechanical elements  
 Con o senza parti meccaniche  
 Mit oder ohne Aggregate  
 Con ó sin mecanica desmontada

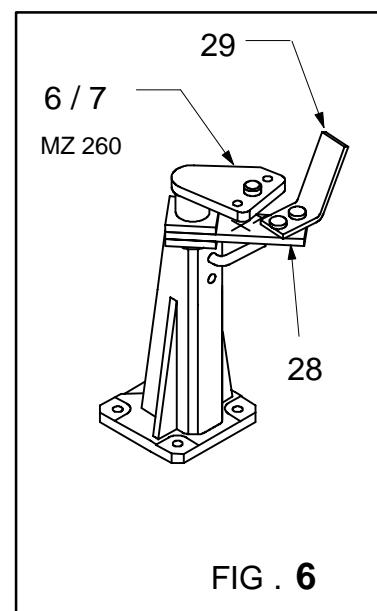
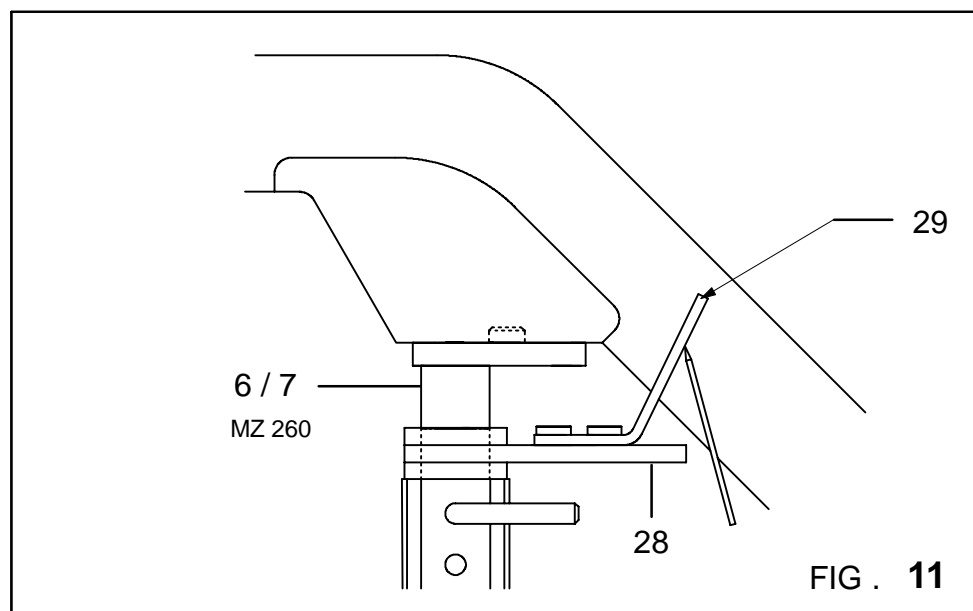
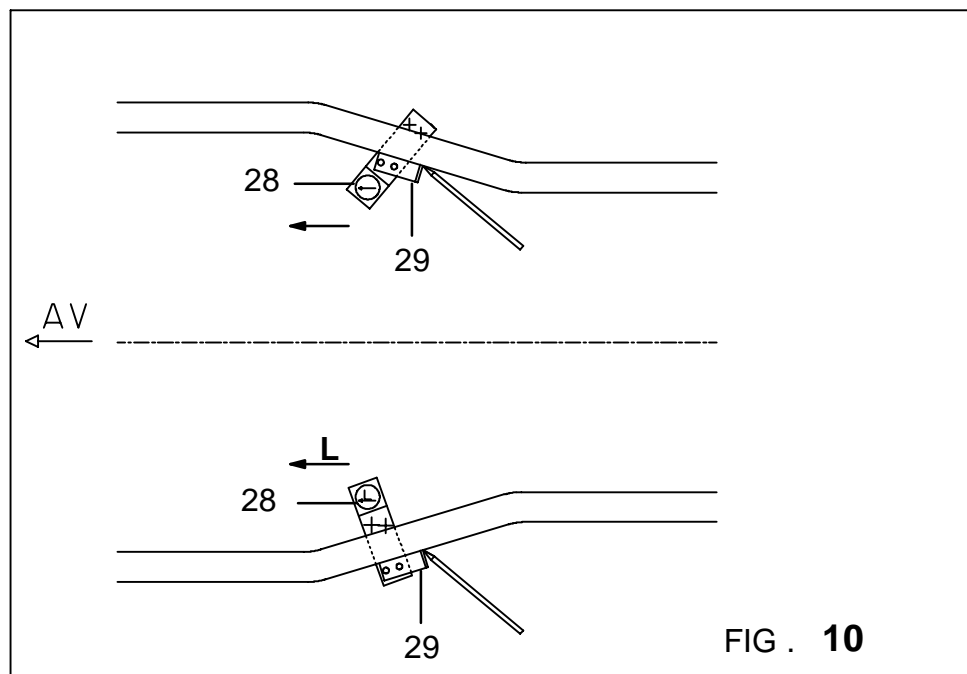
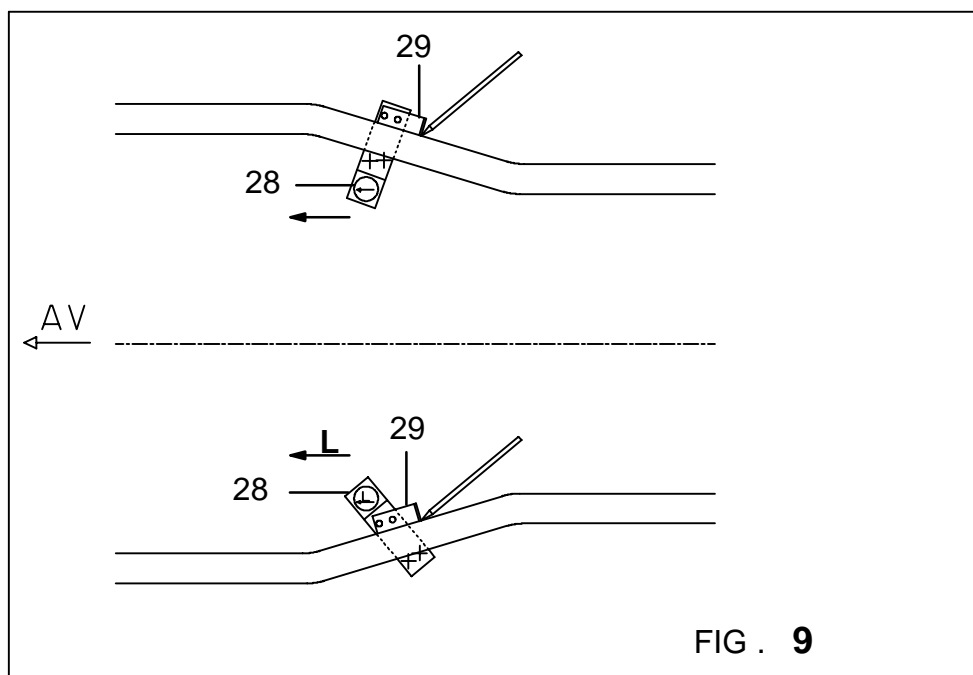
**PEUGEOT**

**655.320**

78 Kg	10.02.95	423-D-14T
-------	----------	-----------



- SENS DE TRAÇAGE DES BRANCARDS COUPE ARRIERE
- CUTTING GAUGE OF THE REAR END OF THE CHASSIS LEGS
- SCHNEIDSCHABLONE DER FRONT LÄNGSTRÄGER - HINTEN
- SOGOMA DI TOGLIO DEI SEMI-LONGHERONI - DIETRO
- PLANTILLA TRAZADORA DEL ASPECTO TRASERO DE LOS VAJALES

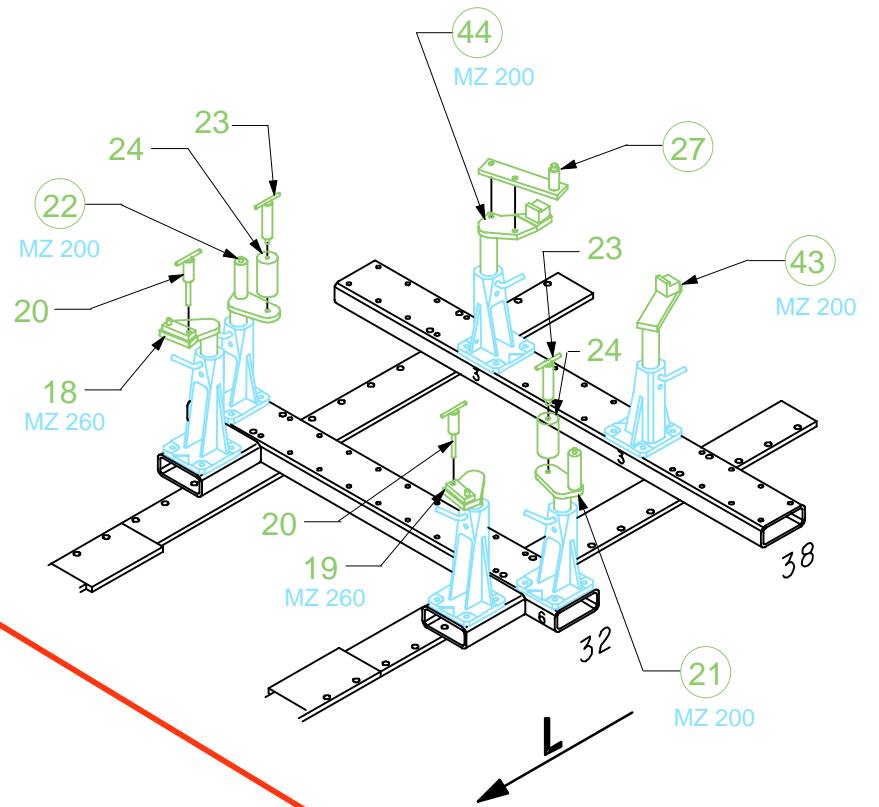
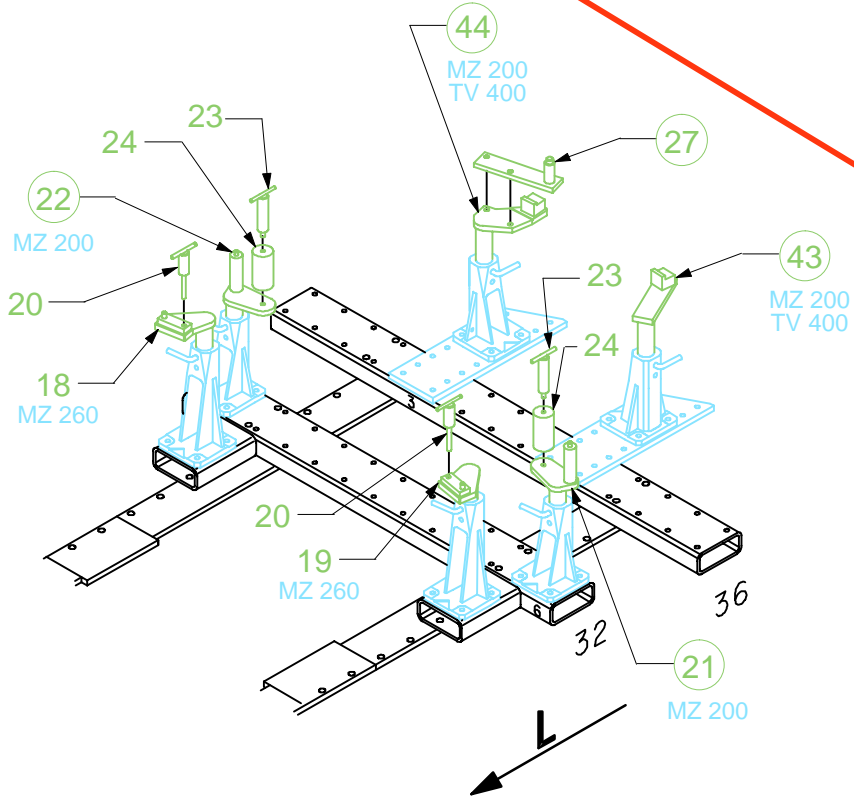


**655.320**

78 Kg | 10.02.95 | 423-D-14U

**MUF 7**

**M8S  
MT10  
SVN**

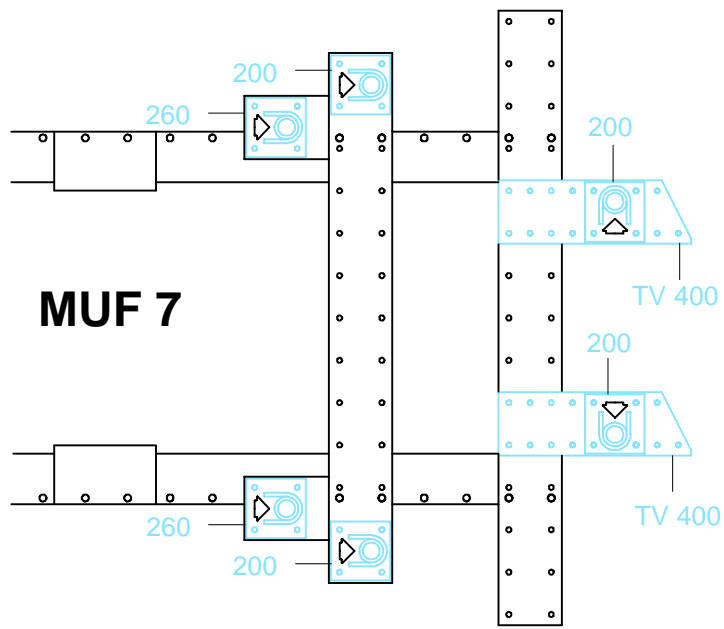


○ Avec ou sans mécanique  
With or without mechanical elements  
Con o senza parti meccaniche  
Mit oder ohne Aggregate  
Con ó sin mecanica desmontada

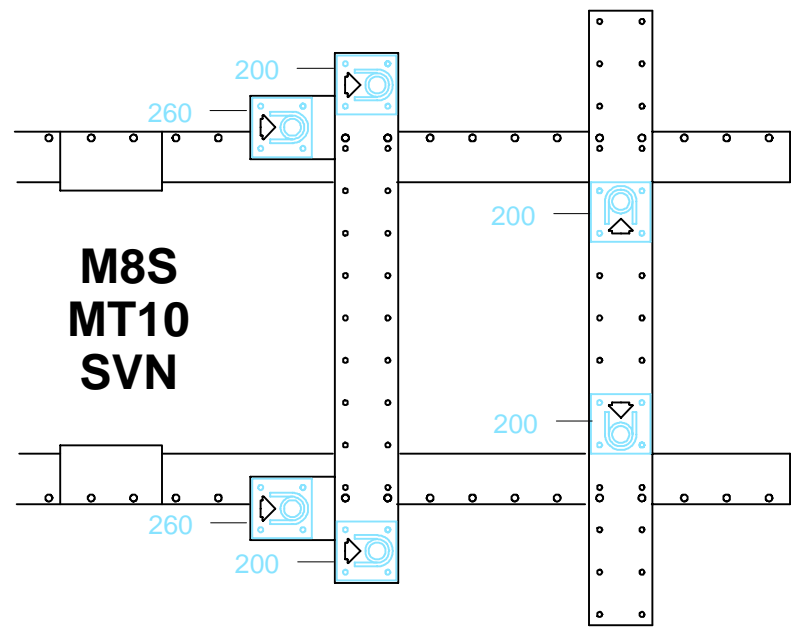
**PEUGEOT**

**655.320**

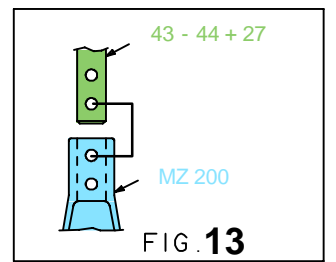
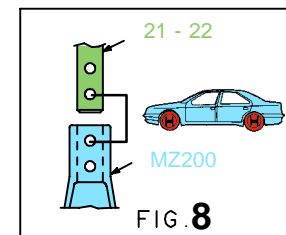
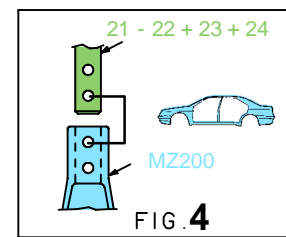
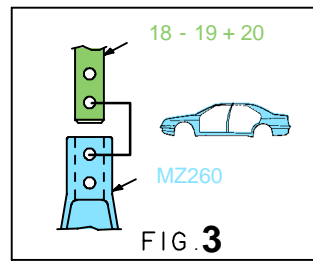
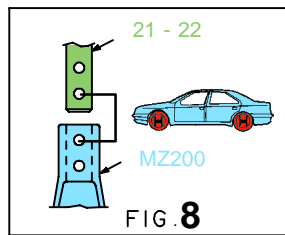
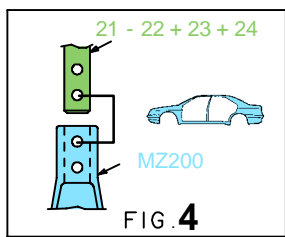
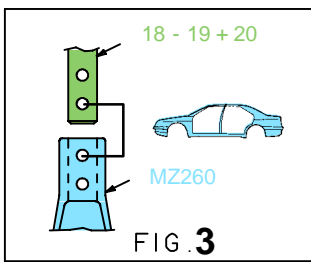
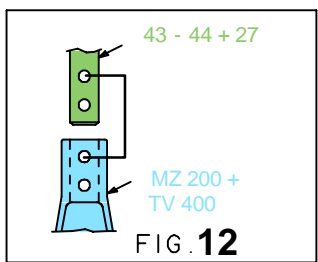
78 Kg    10.02.95    423-D-14V

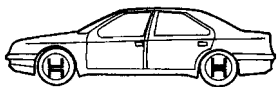


24 25 26 27 28 29 30 31 32 33 34 35 36 38



24 25 26 27 28 29 30 31 32 33 34 35 36 37 38 39 40 41





- Turbo D XSI - S16 N° 30087088 →  
 - Motorisation / Engine / Motore / Motorizacion / Motori  
 XU - XUD N° 30198450 →

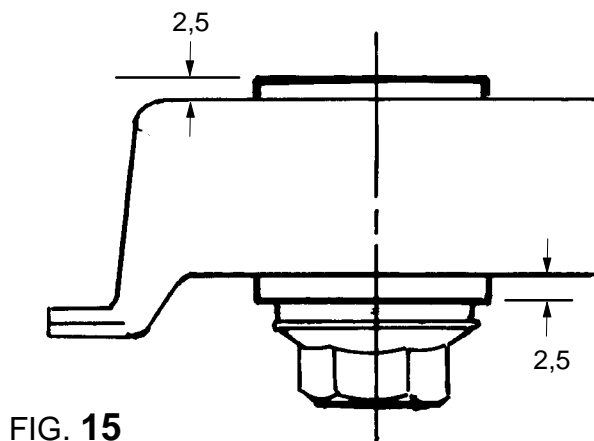
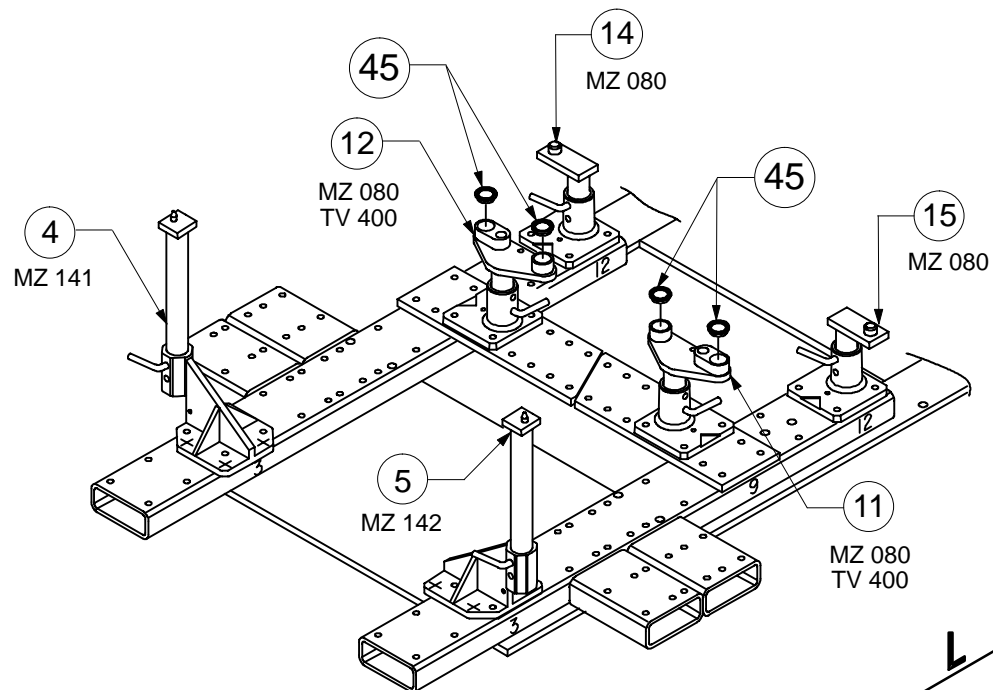


FIG. 15

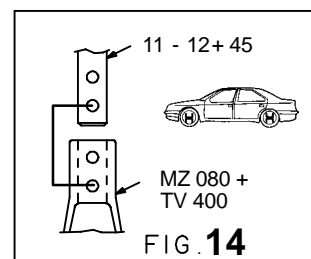


FIG. 14

Avec ou sans mécanique  
 With or without mechanical elements  
 Con o senza parti meccaniche  
 Mit oder ohne Aggregate  
 Con ó sin mecanica desmontada

**PEUGEOT**

**655.320**

78 Kg | 10.02.95 | 423-D-14W

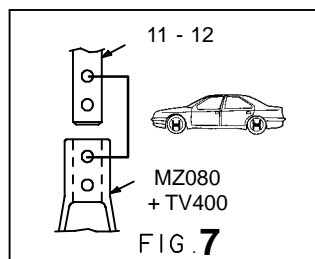
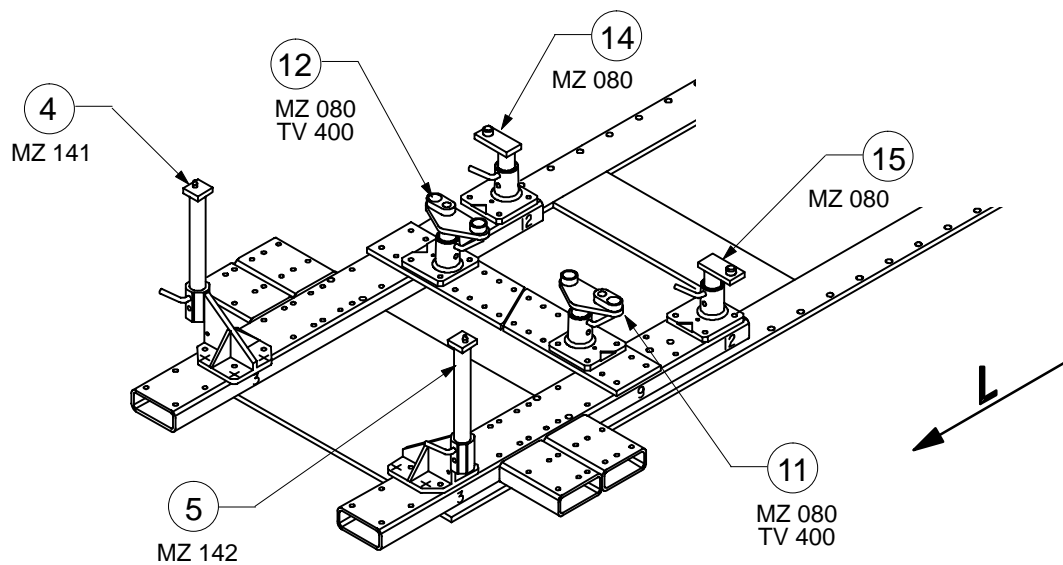


FIG. 7

- Motorisation / Engine / Motore / Motorizacion / Motori  
 TU 94 →

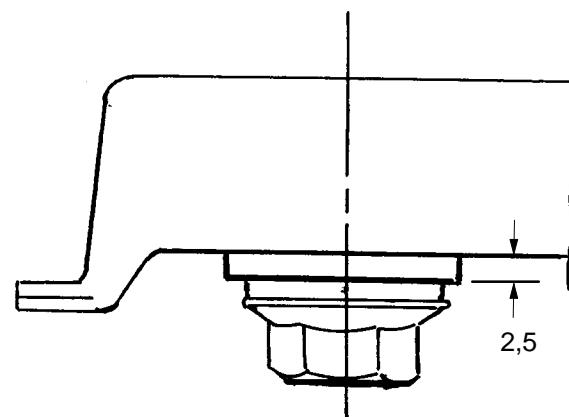


FIG. 16

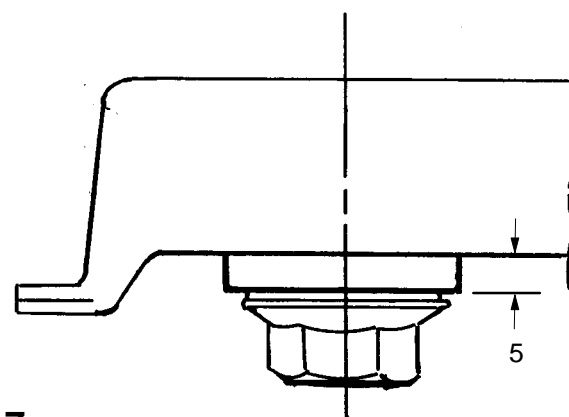


FIG. 17