

REP.	REFERENCE	PDS	NB	MZ
1	638.701	1,5	1	140
2	638.702	1,5	1	140
3	638.703	2,1	1	142
4	638.704	2,1	1	141
5	638.705	0,3	4	
6	638.706	0,4	2	
7	638.707	2,5	1	601
8	638.708	2,5	1	602
9	638.709	1,2	2	
10	638.710	1,4	1	080/140
11	638.711	1,4	1	080/140
12	638.712	0,3	2	
13	638.713	1,9	1	080
14	638.714	1,9	1	080
15	638.715	2,0	1	080
16	638.716	2,0	1	080
17	638.717	2,6	1	260
18	638.718	2,6	1	260
19	638.719	2,4	1	601
20	638.720	2,4	1	602
21	638.721	0,8	2	
22	638.722	3,0	1	200
23	638.723	3,0	1	200
24	638.724	0,4	2	
25	638.725	2,1	1	260
26	638.726	2,1	1	260
	V 69	0,05	4	
	V 73	0,1	4	

	M 8x25	6
	M 10x25	6
	M 10.125x30	2
	M 12.125x30	2
	M 12.125x45	2
	M 14.150x50	3
	M 14.150x70	1
	M 14.150x100	1
	M 14.150x120	3
	M 8	6
	M 10	6
	M 12	4

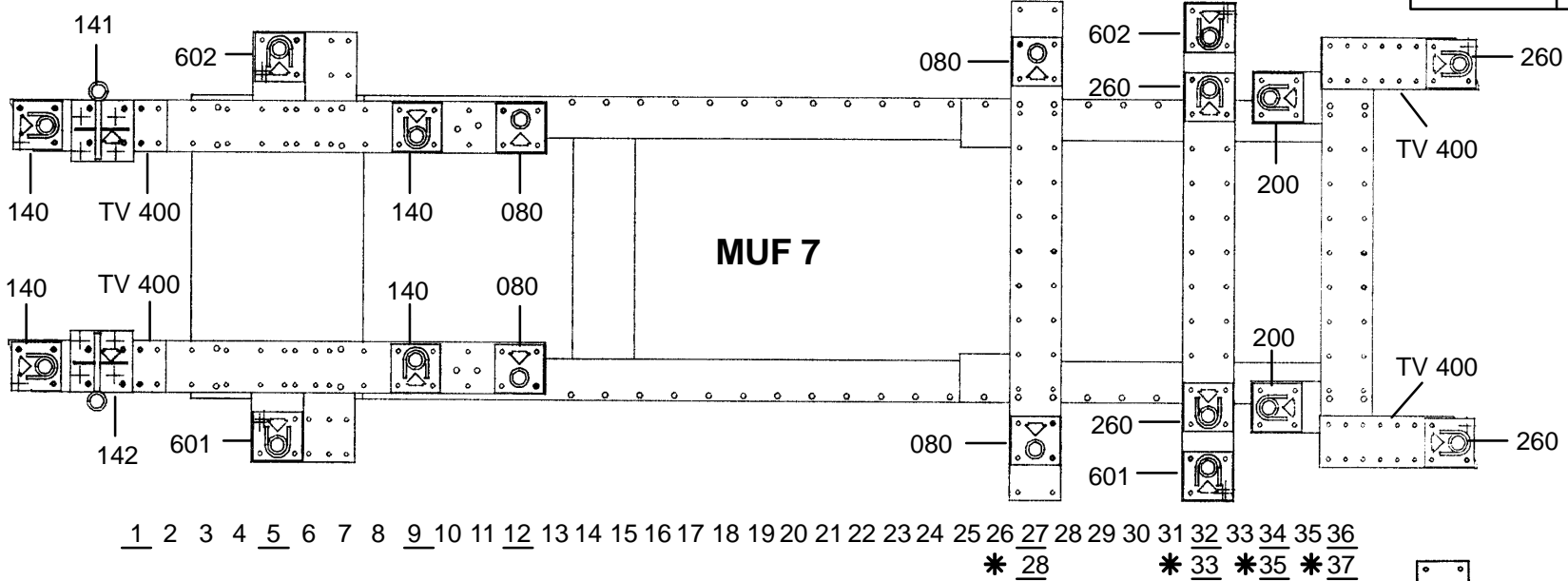
**\* AVALON**

○ Avec ou sans mécanique  
With or without mechanical elements  
Con o senza parti meccaniche  
Mit oder ohne Aggregate  
Con ó sin mecanica desmontada

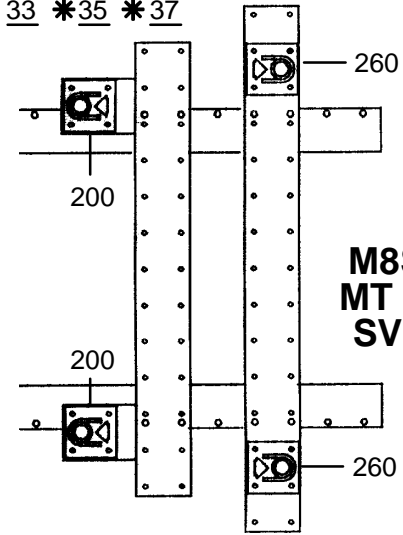
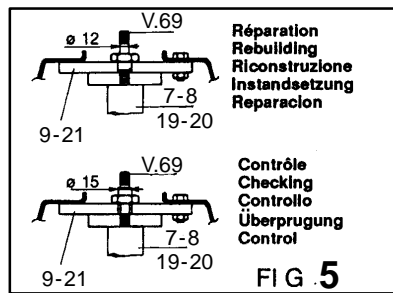
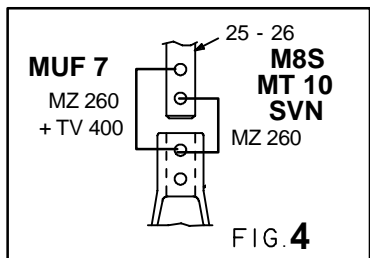
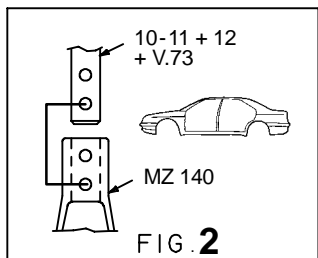
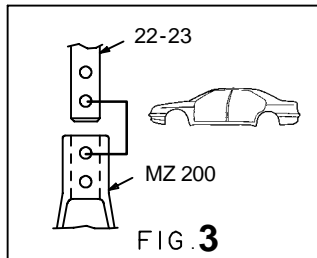
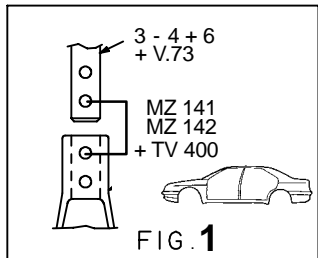
**TOYOTA - LEXUS**

**638.300**

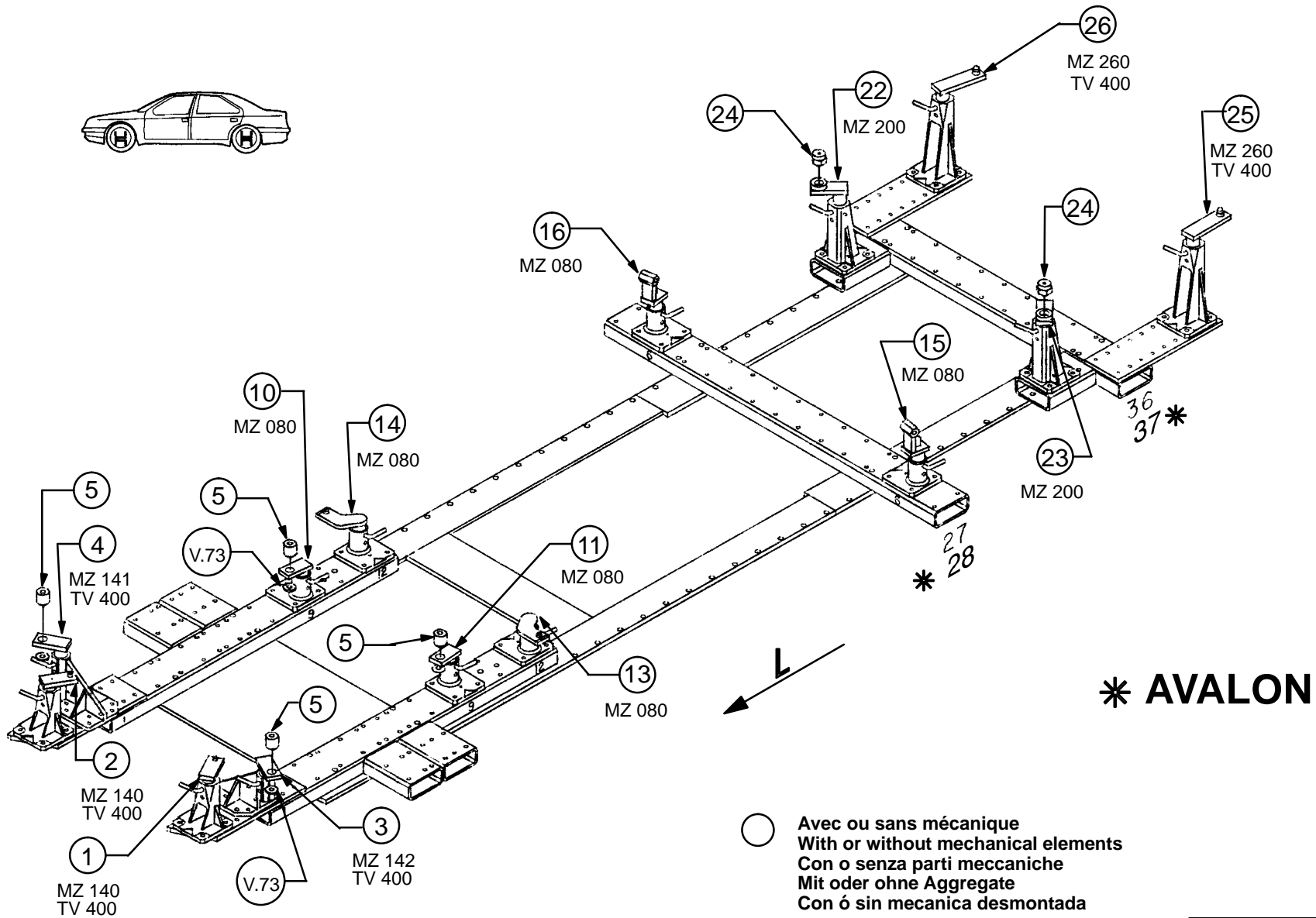
53 Kg    10.01.96    434-D-40A



1 2 3 4 5 6 7 8 9 10 11 12 13 14 15 16 17 18 19 20 21 22 23 24 25 26 27 28 29 30 31 32 33 34 35 36  
\* 28    \* 33    \* 35    \* 37



31 32 33 34 35 36 37 38 39  
\* 35    \* 37    \* 40



**TOYOTA - LEXUS**

**638.300**

53 Kg | 10.01.96 | 434-D-40B

