

REP.	REFERENCE	PDS	NB	MZ
1	634.701	2,9	1	200
2	634.702	2,9	1	200
3	634.703	1,8	1	080
4	634.704	1,8	1	080
5	634.705	2,4	1	200
6	634.706	2,4	1	200
7	634.707	2,1	1	080/260
8	634.708	2,1	1	080/260
9	634.709	1,0	2	
10	634.710	2,9	1	602
11	634.711	2,9	1	601
12	634.712	0,6	2	
13	634.713	2,0	1	080/140
14	634.714	2,0	1	080/140
15	634.715	0,6	2	
16	634.716	1,2	1	080
17	634.717	1,2	1	080
18	634.718	1,8	1	140
19	634.719	1,8	1	140
20	634.720	0,6	2	
21	634.721	3,4	1	142
22	634.722	3,4	1	141
23	634.723	4,8	1	260
24	634.724	4,8	1	260
25	634.725	0,6	2	
26	634.726	2,5	1	260
27	634.727	2,5	1	260
	V73	0,1	2	

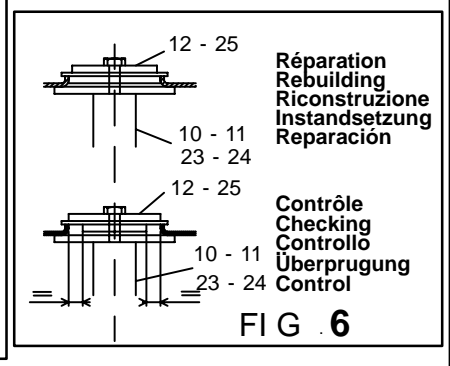
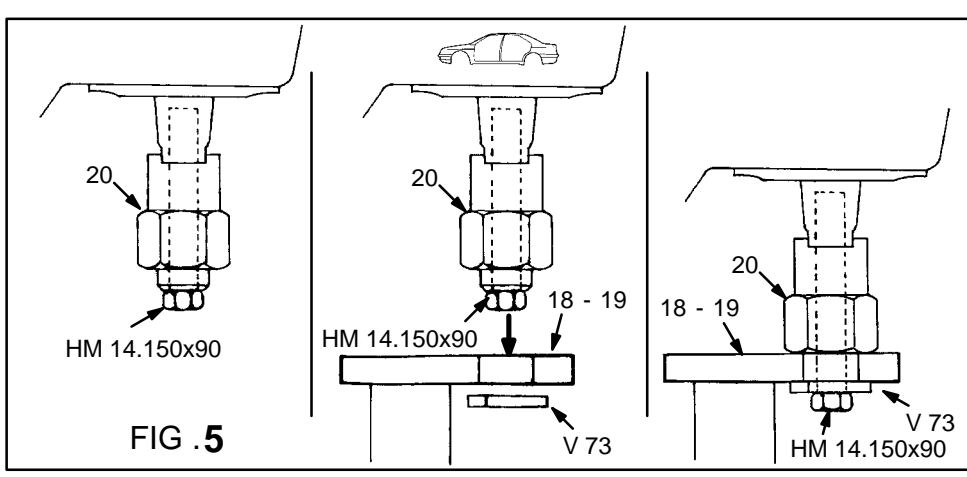
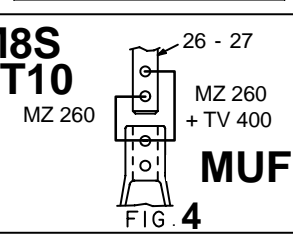
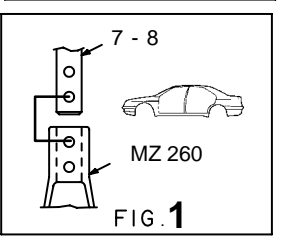
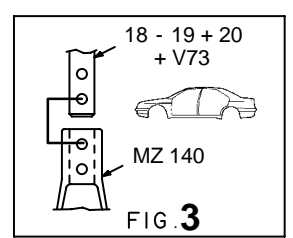
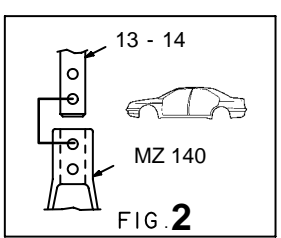
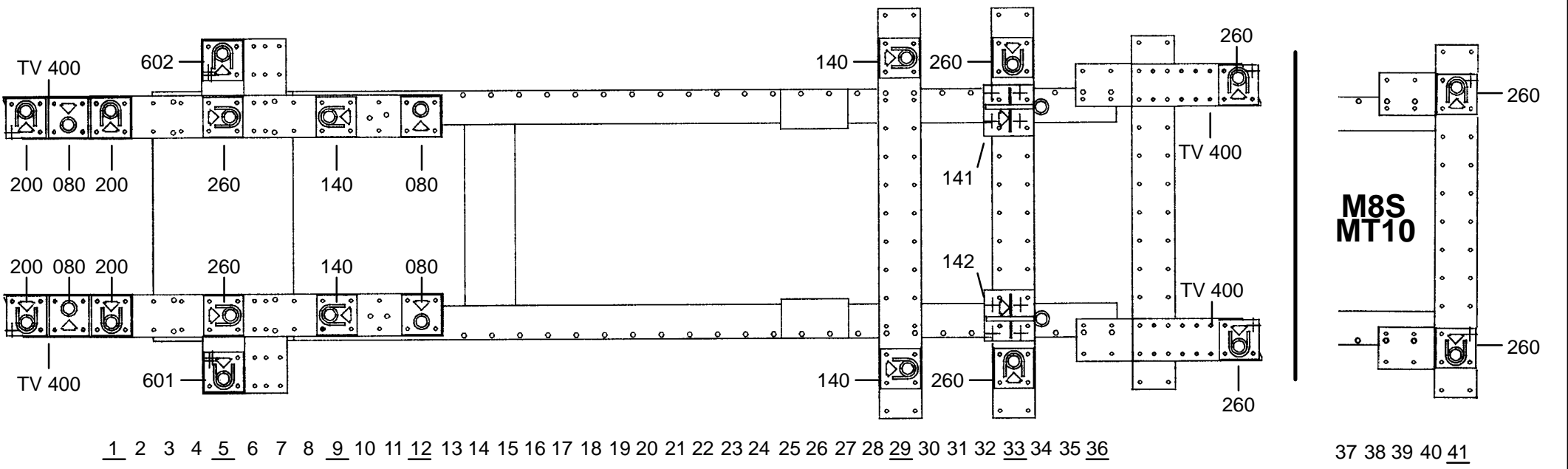
	M 6x30	2
	M 12x35	4
	M 12.125x25	2
	M 12.125x45	4
	M 12x180	4
	M 14.150x25	2
	M 14.150x30	2
	M 14.150x45	2
	M 14.150x90	2
	M 14.150x150	2
	M 12	4

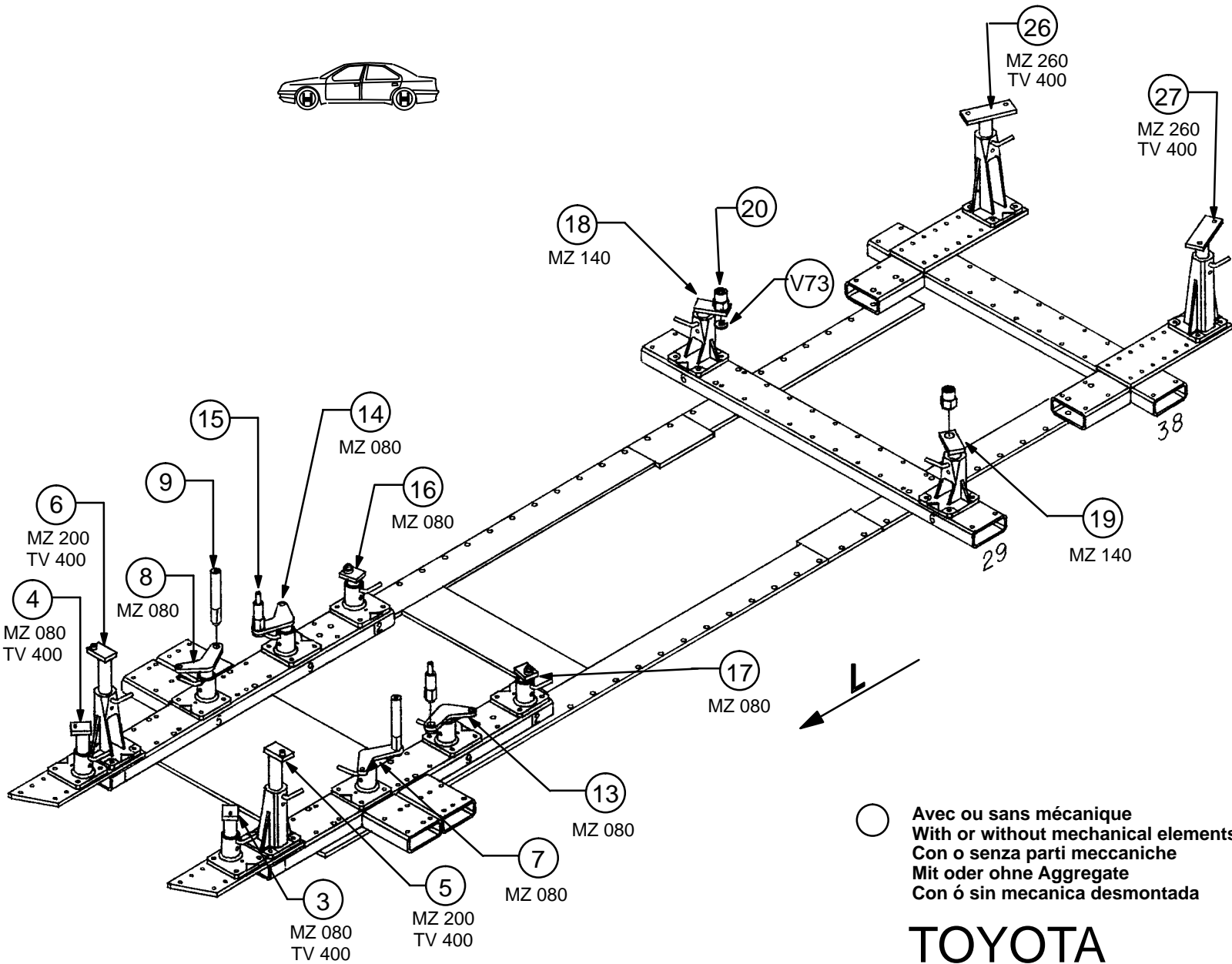
○ Avec ou sans mécanique  
 With or without mechanical elements  
 Con o senza parti meccaniche  
 Mit oder ohne Aggregate  
 Con ó sin mecanica desmontada

**TOYOTA**

**634.300**

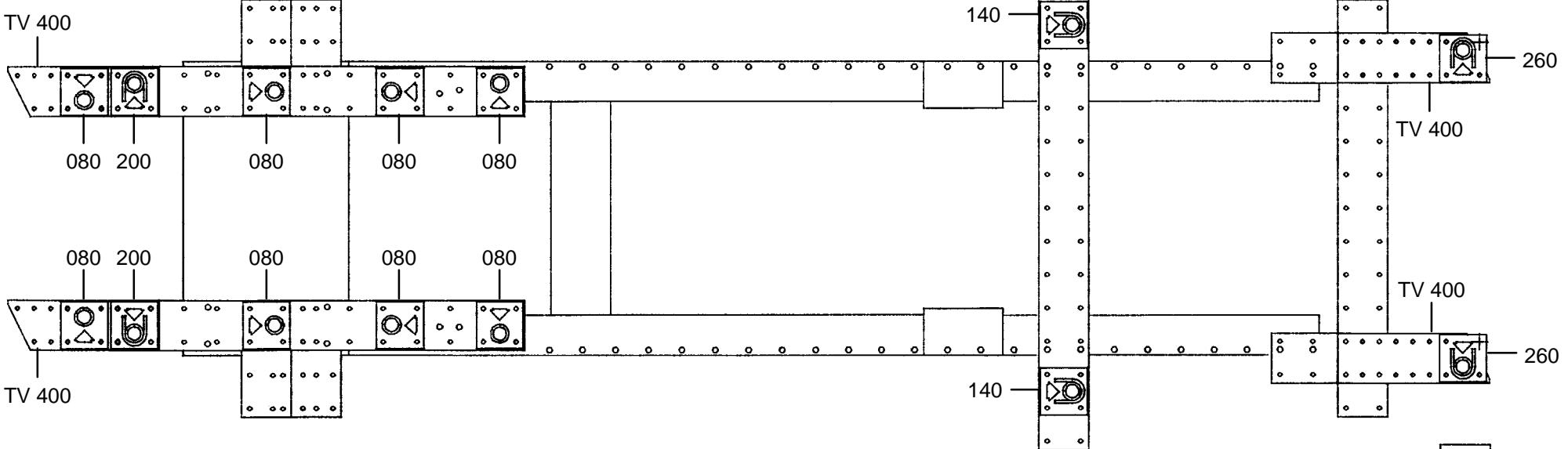
64 Kg	19.12.91	434-D-38A
-------	----------	-----------





**634.300**

64 Kg	19.12.91	434-D-38B
-------	----------	-----------



1 2 3 4 5 6 7 8 9 10 11 12 13 14 15 16 17 18 19 20 21 22 23 24 25 26 27 28 29 30 31 32 33 34 35 36

