

REP.	REFERENCE	PDS	NB	MZ
1	631.701	2,1	1	140
2	631.702	2,1	1	140
3	631.703	1,9	1	080/260
4	631.704	1,9	1	080/260
5	631.705	0,8	2	
6	631.706	3,9	1	602
7	631.707	3,9	1	601
8	631.708	0,7	2	
9	631.709	4,1	1	141
10	631.710	1,8	1	080
11	631.711	1,8	1	080
12	631.712	0,9	2	
13	631.713	1,4	1	080
14	631.714	1,4	1	080
15	631.715	2,0	1	140
16	631.716	2,0	1	140
17	631.717	1,6	1	200
18	631.718	1,6	1	200
19	631.719	0,2	2	
20	631.720	0,5	4	
21	631.721	3,9	1	601
22	631.722	3,9	1	602
23	631.723	0,2	2	
24	631.724	2,3	1	200
25	631.725	2,3	1	200
26	631.726	0,2	2	
27	631.727	1,9	1	260
28	631.728	1,9	1	260

	HM 10x20	2
	HM 10.125x16	4
	HM 10.125x35	2
	HM 10.125x70	2
	HM 12x30	4
	HM 14.150x110	4

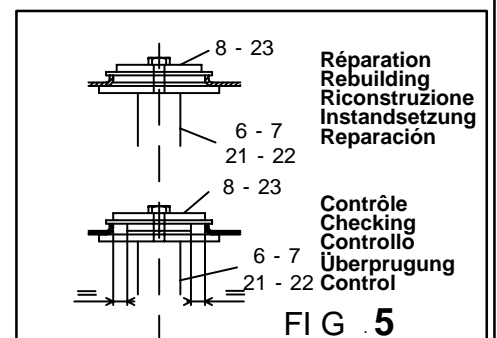
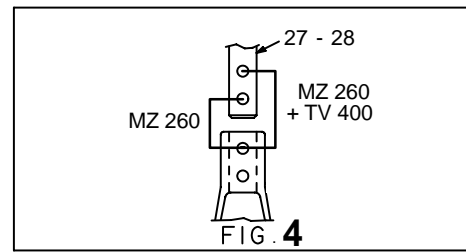
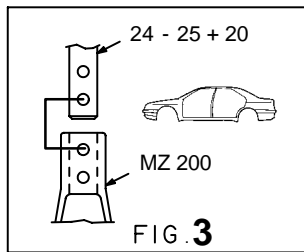
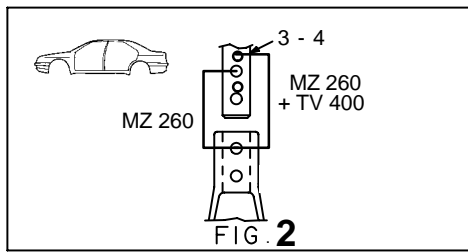
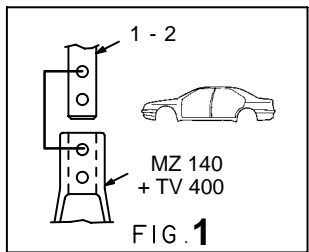
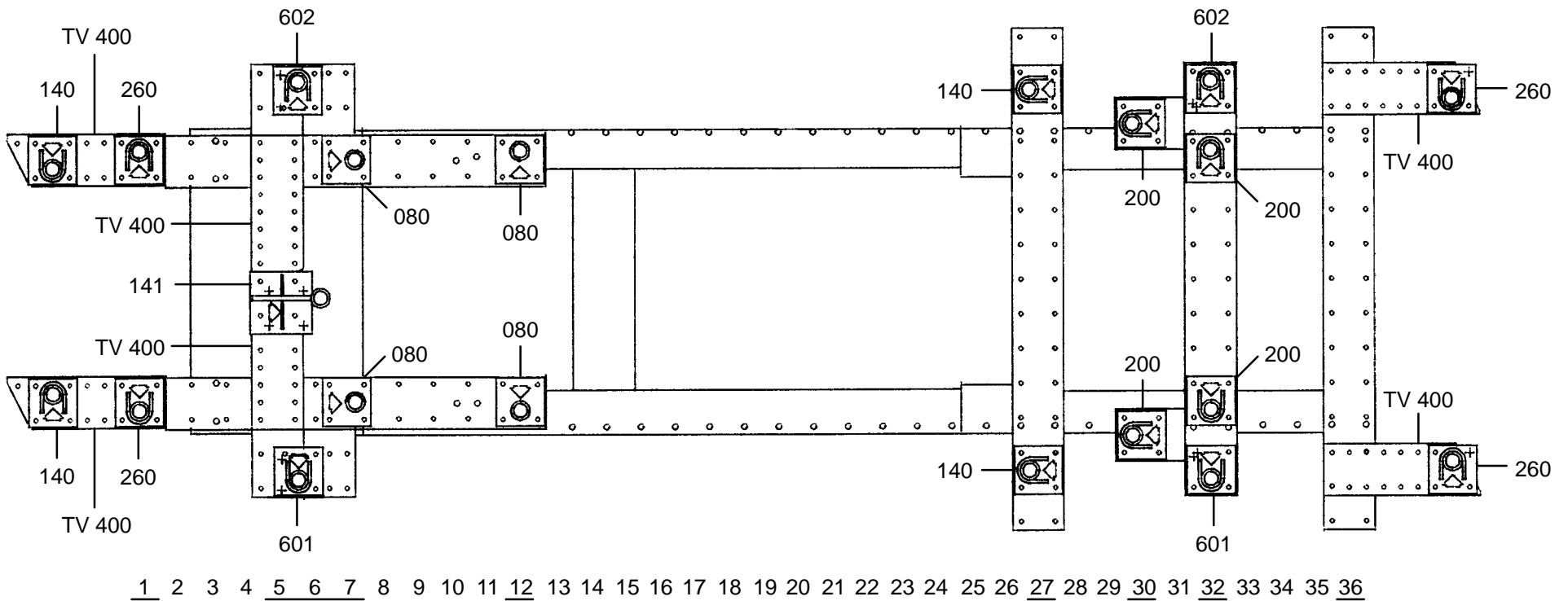
	L 10	6
	M 12	2

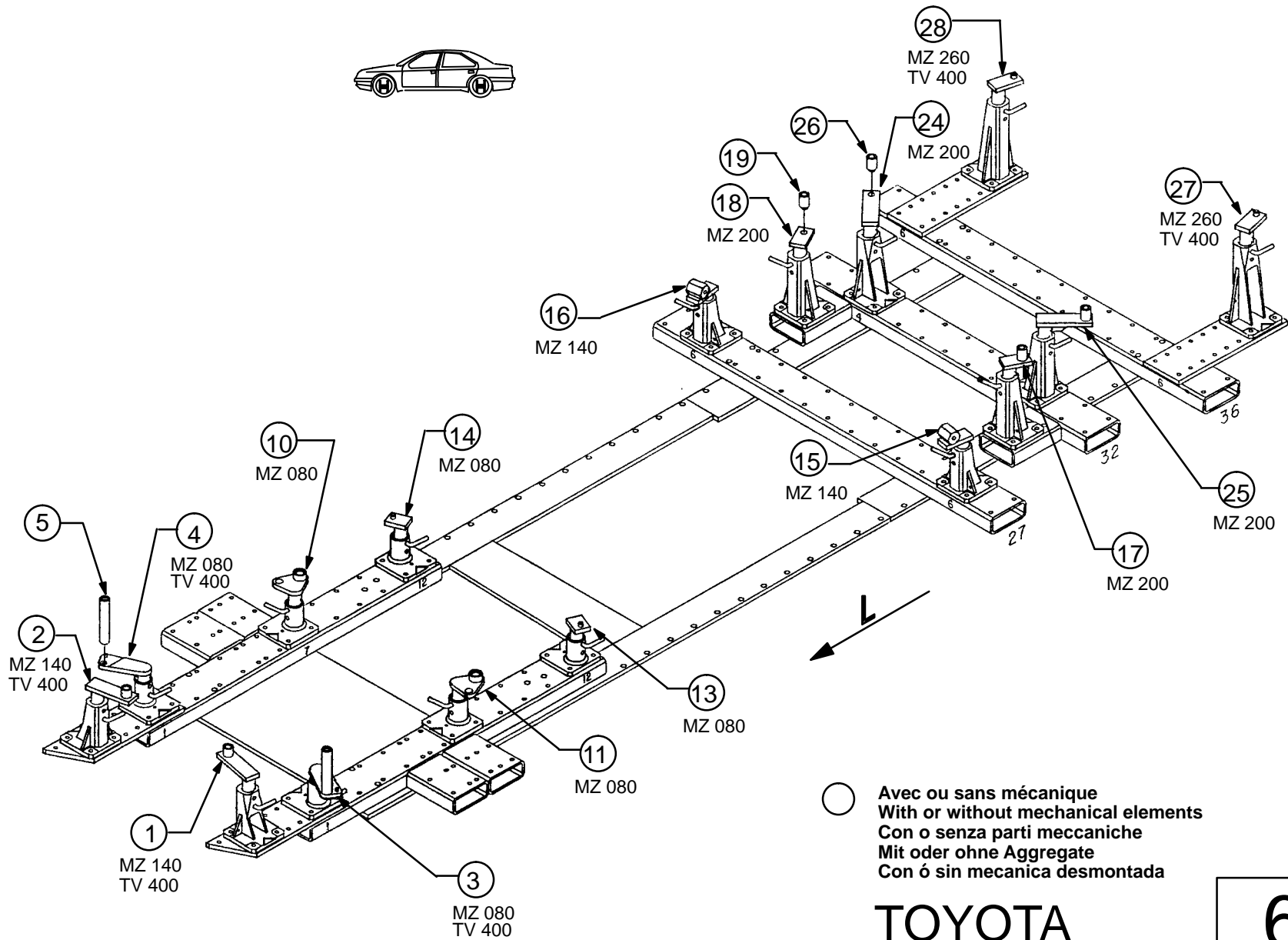
○ Avec ou sans mécanique
With or without mechanical elements
Con o senza parti meccaniche
Mit oder ohne Aggregate
Con ó sin mecanica desmontada

TOYOTA

631.300

58 Kg 17.12.91 434-D-37A

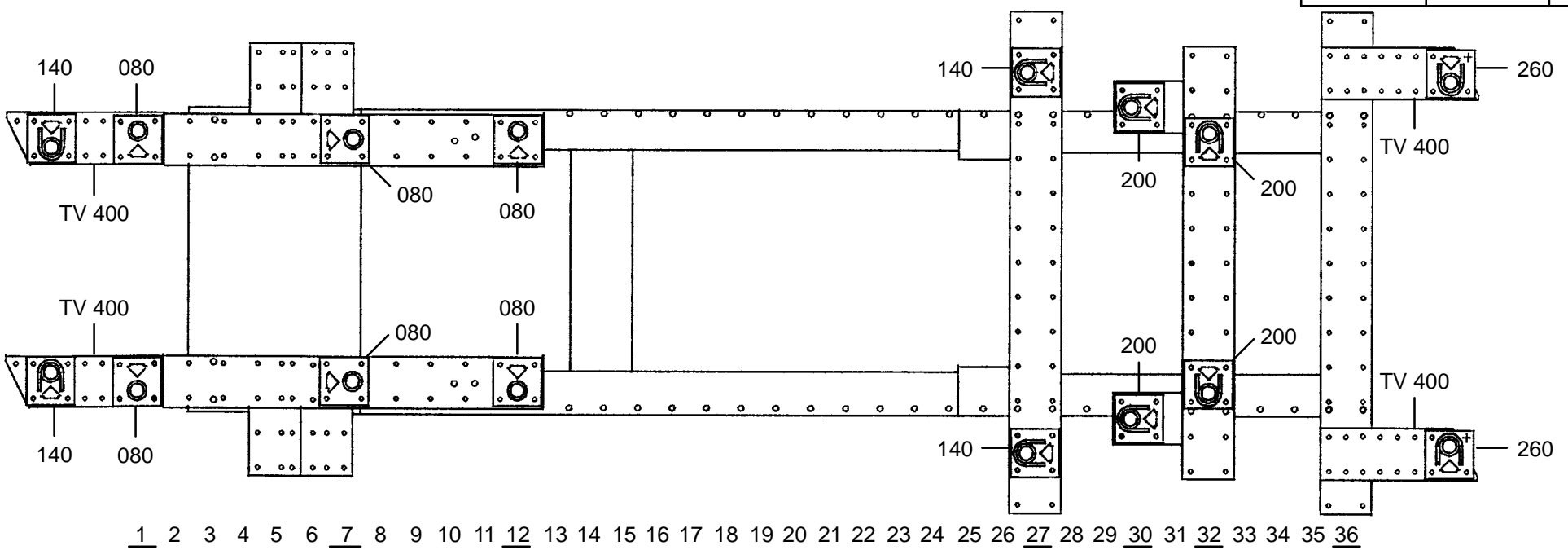




TOYOTA

631.300

58 Kg | 17.12.91 | 434-D-37B



1 2 3 4 5 6 7 8 9 10 11 12 13 14 15 16 17 18 19 20 21 22 23 24 25 26 27 28 29 30 31 32 33 34 35 36

