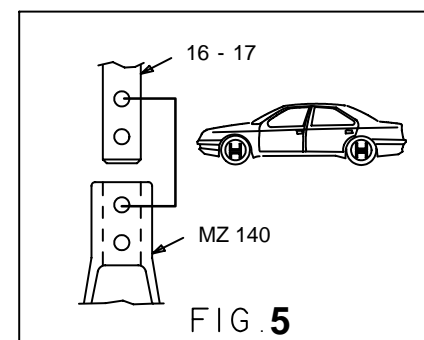
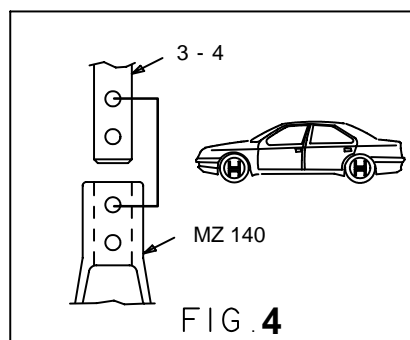
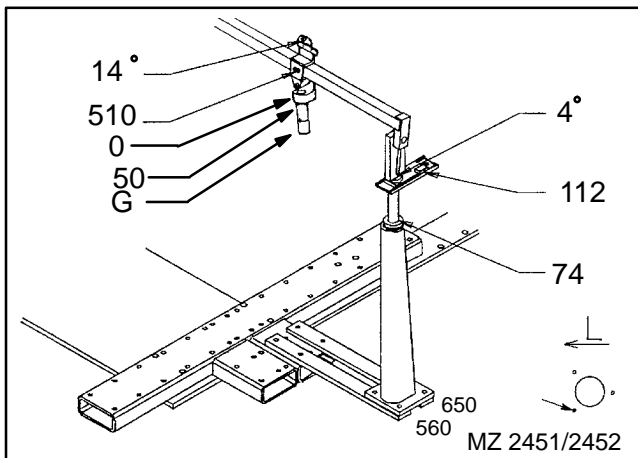
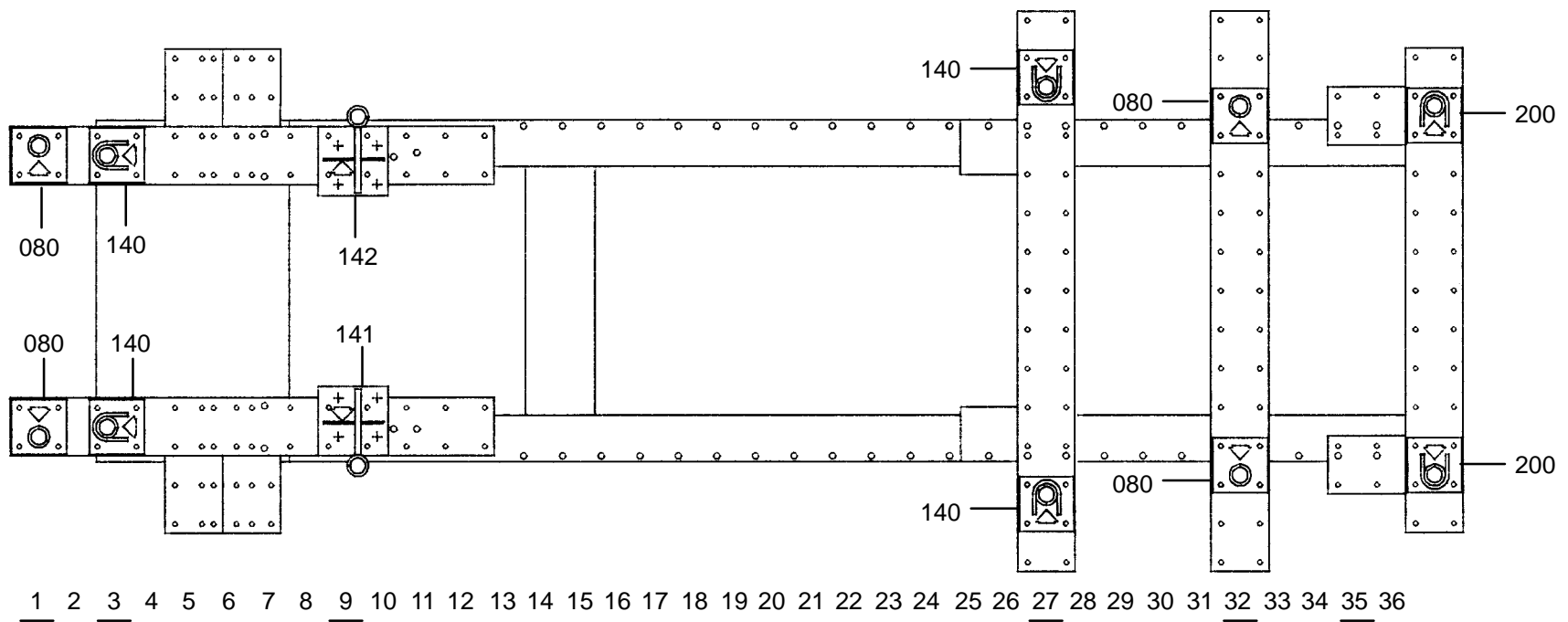
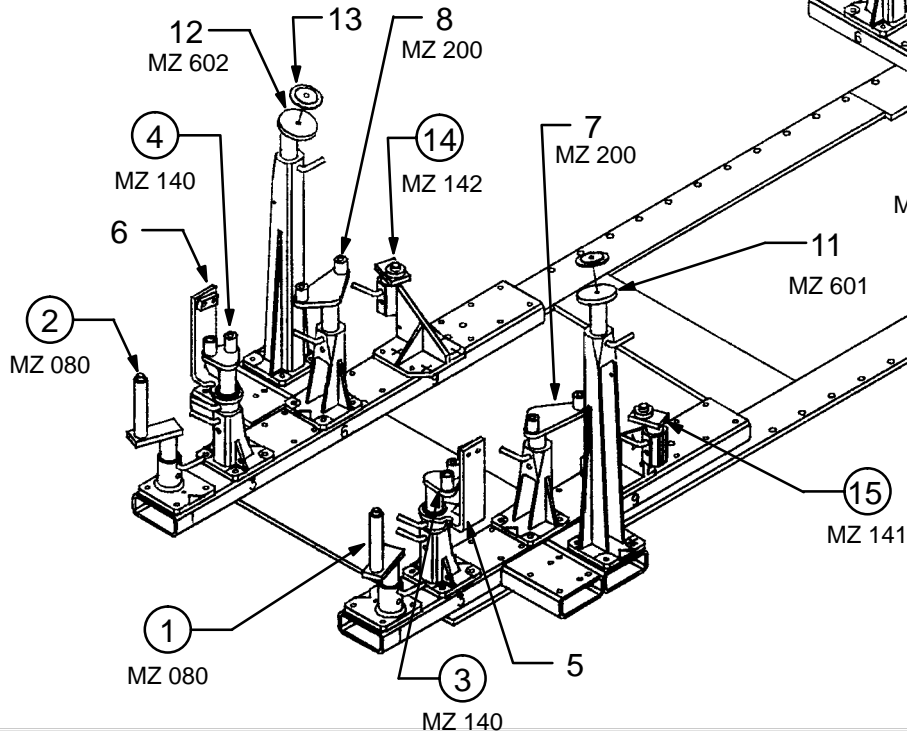
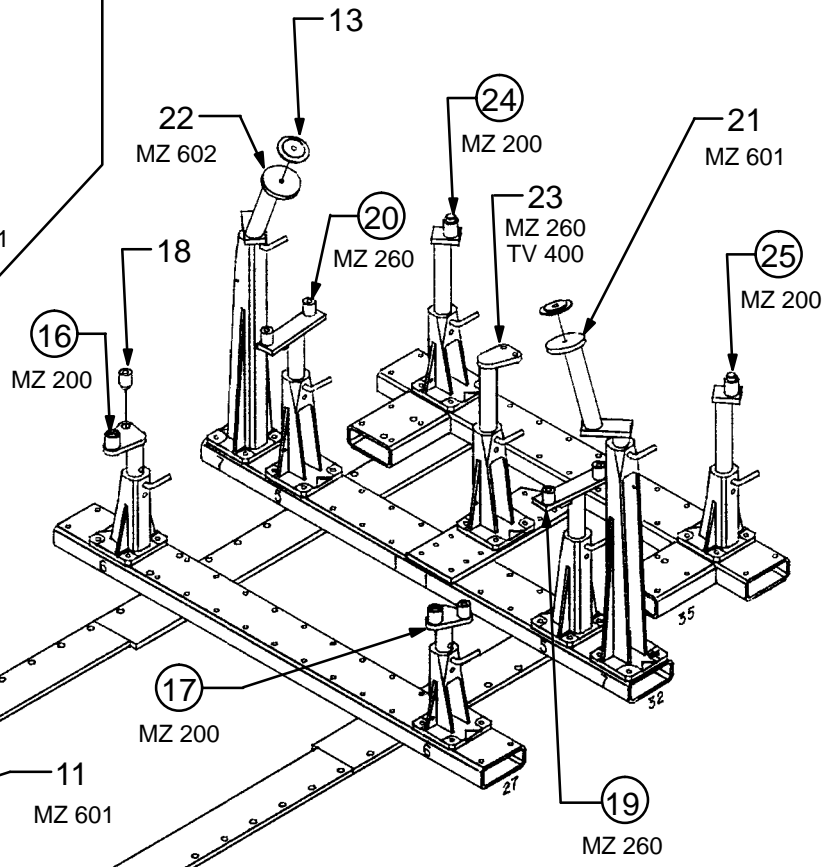
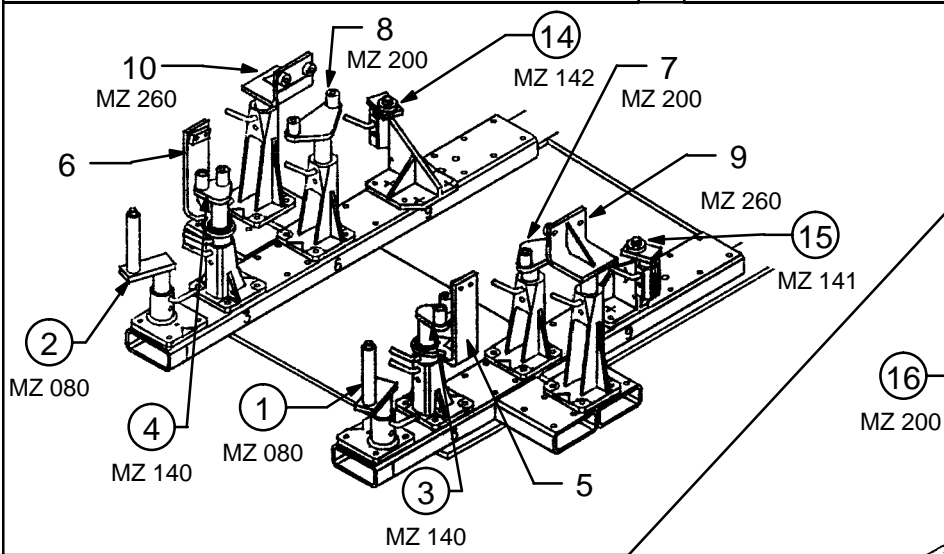


HONDA / ACURA

616.300

72 Kg 02.05.91 413-D-16B





○ Avec ou sans mécanique
 With or without mechanical elements
 Con o senza parti meccaniche
 Mit oder ohne Aggregate
 Con ó sin mecánica desmontada

HONDA / ACURA

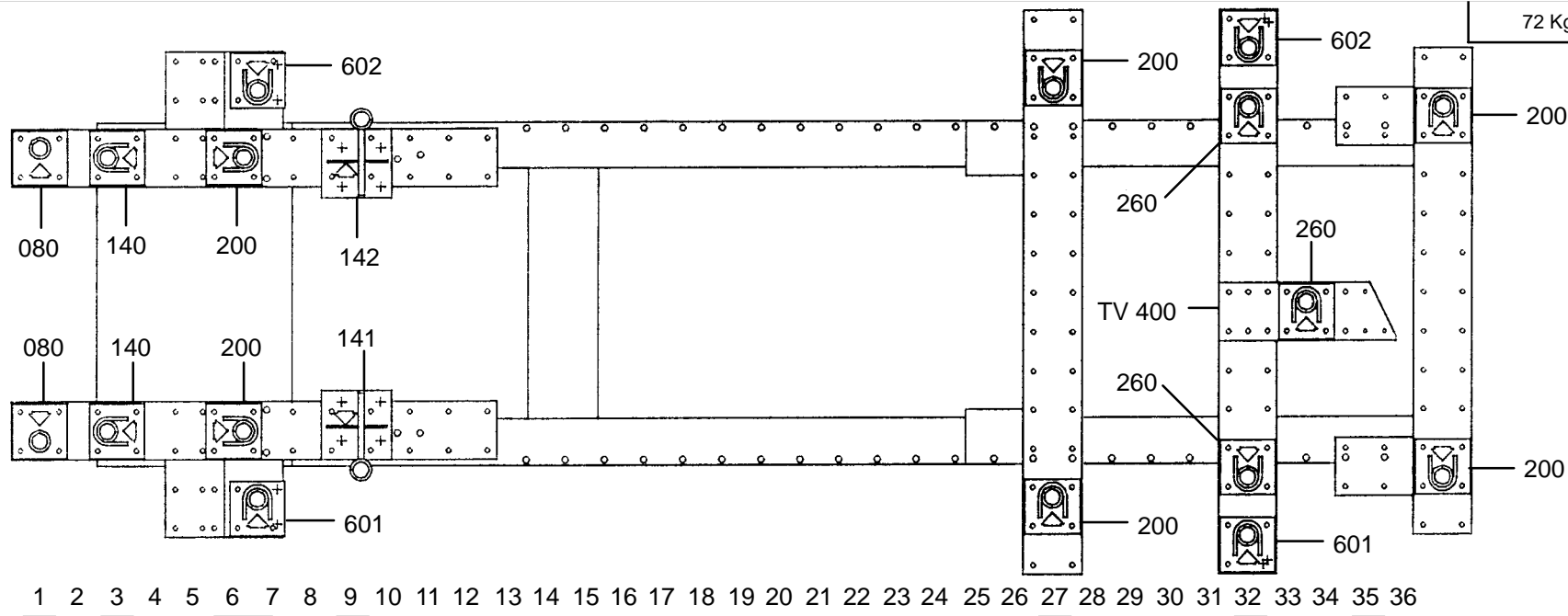
REP.	REFERENCE	PDS	NB	MZ
1	616.701	3,0	1	080
2	616.702	3,0	1	080
3	616.703	2,9	1	140
4	616.704	2,9	1	140
5	616.705	3,0	1	140
6	616.706	3,0	1	140
7	616.707	3,2	1	200
8	616.708	3,2	1	200
9	616.709	3,8	1	260
10	616.710	3,8	1	260
11	616.711	2,1	1	601
12	616.712	2,1	1	602
13	616.713	0,3	4	
14	616.714	1,6	1	142
15	616.715	1,6	1	141
16	616.716	2,4	1	140/200
17	616.717	2,3	1	140/200
18	616.718	0,2	2	
19	616.719	4,0	1	260/080
20	616.720	4,0	1	260/080
21	616.721	3,0	1	601
22	616.722	3,0	1	602
23	616.723	3,0	1	260
24	616.724	3,4	1	200
25	616.725	3,4	1	200
26	616.726	1,0	2	
	B.70	0,2	2	

	M10.125x50	4
	M10.125x80	2
	M10.125x125	4
	M12x30	4
	M12.125x120	16
	M12.125x160	2
	M12.125x220	2

	M10.125	2
	M12	2

	MU 12	6
--	-------	---

616.300



72 Kg 02.05.91 413 -D-16A

