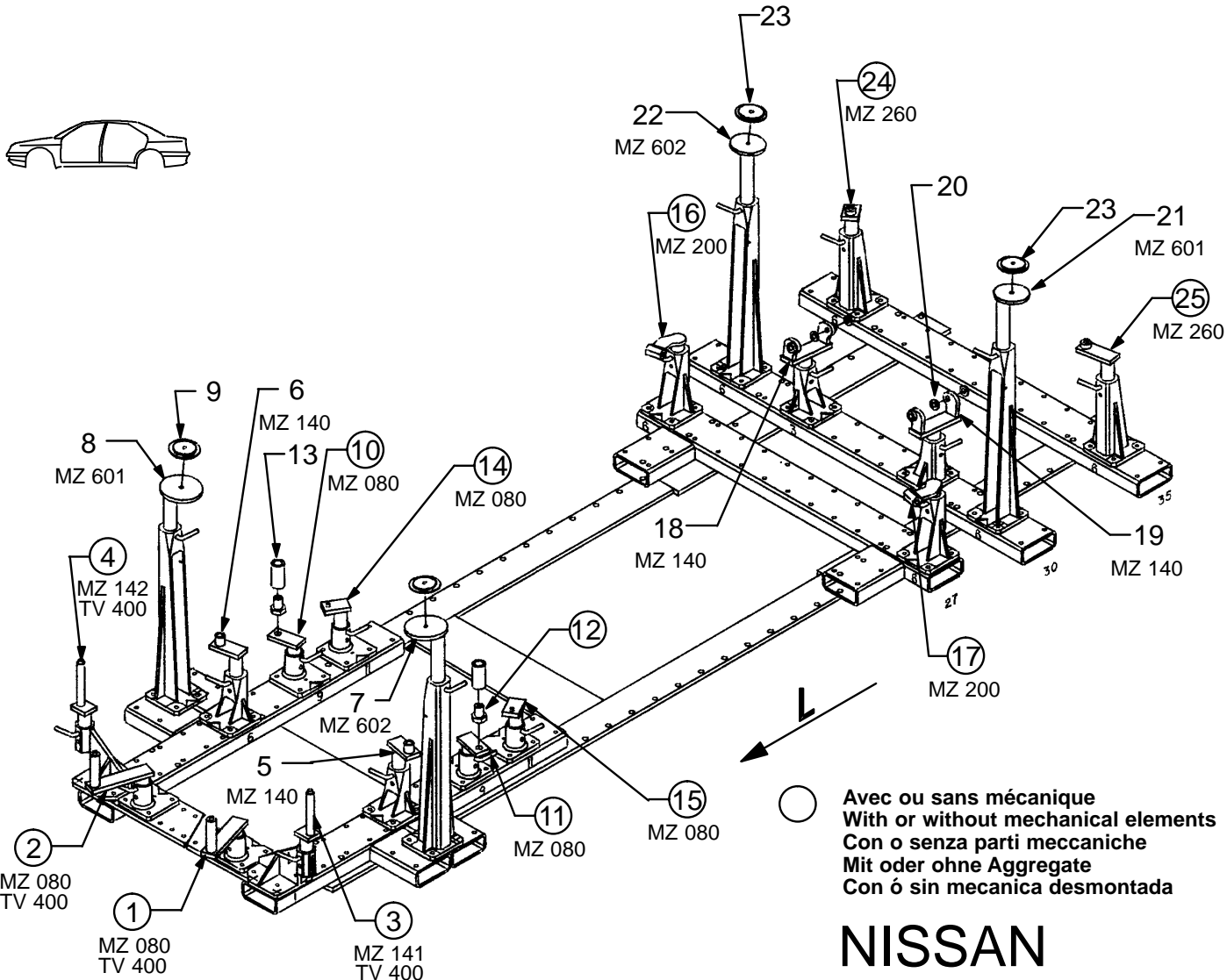


B13	SUNNY-SENTRA
N14	SUNNY-PULSAR
KB13	NX COUPE-100NX



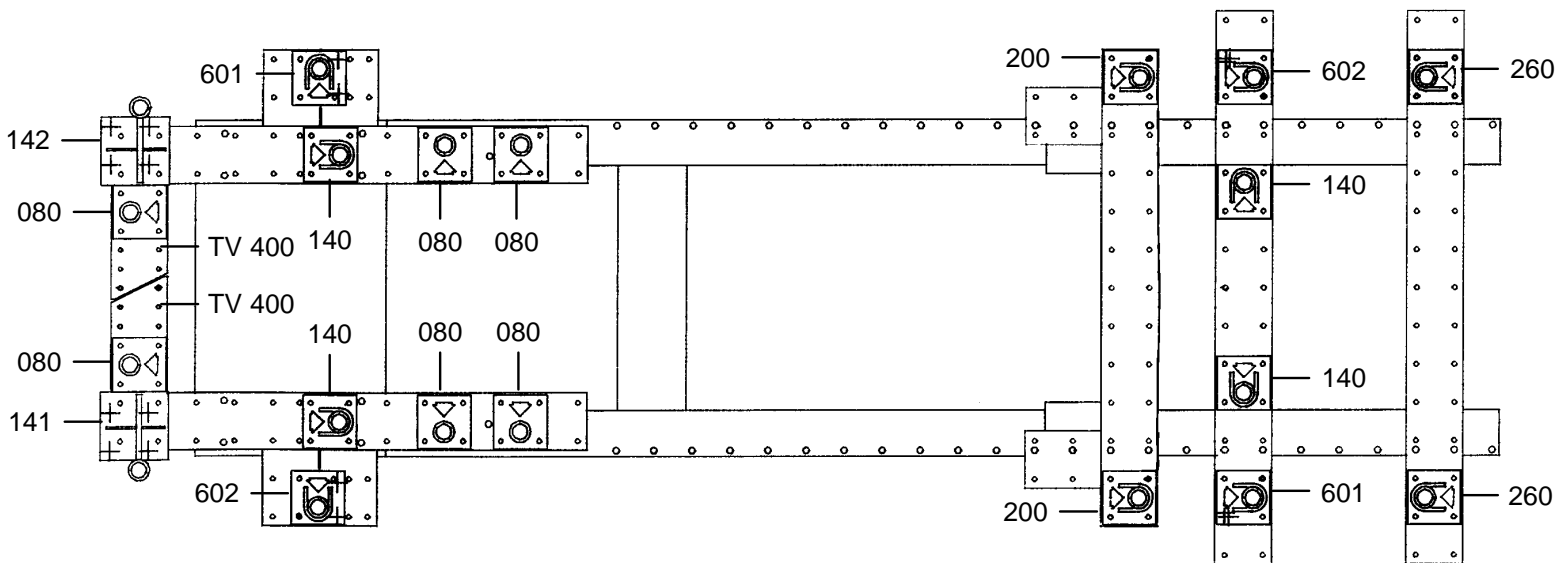
REP.	REFERENCE	PDS	NB	MZ
1	613.701	2,7	1	080
2	613.702	2,7	1	080
3	613.703	2,1	1	141
4	613.704	2,1	1	142
5	613.705	2,0	1	140
6	613.706	2,0	1	140
7	613.707	3,5	1	602
8	613.708	3,5	1	601
9	613.709	0,5	2	
10	613.710	1,4	1	080
11	613.711	1,4	1	080
12	613.712	0,3	2	
13	613.713	0,5	2	
14	613.714	1,5	1	080
15	613.715	1,5	1	080
16	613.716	1,6	1	200
17	613.717	1,6	1	200
18	613.718	2,8	1	140
19	613.719	2,8	1	140
20	613.720	0,05	4	
21	613.721	3,1	1	601
22	613.722	3,1	1	602
23	613.723	0,8	2	
24	613.724	1,7	1	260
25	613.725	2,1	1	260

	M 12x25	4
	M 12.125x30	2
	M 14.150x80	2
	HM 14.150	2
	LU12	2

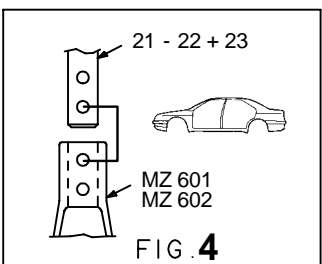
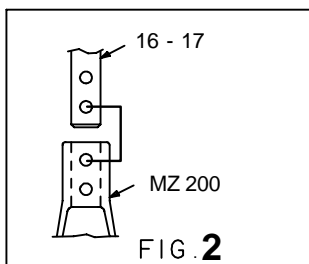
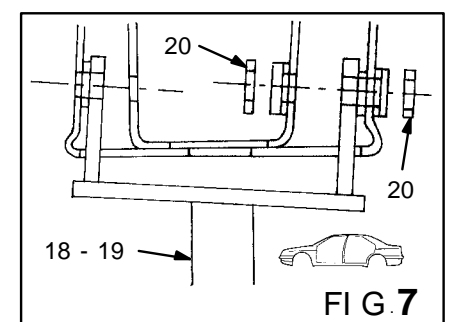
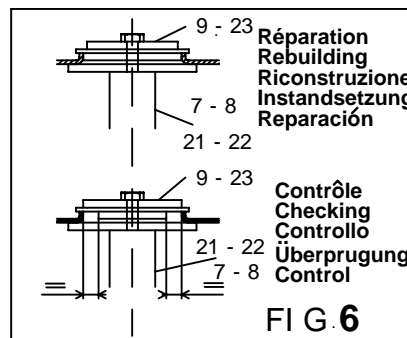
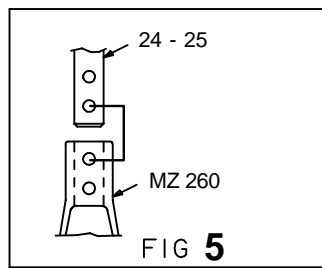
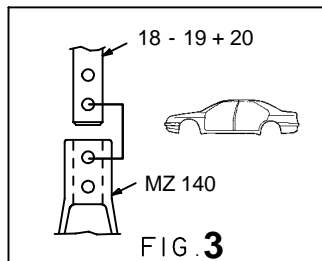
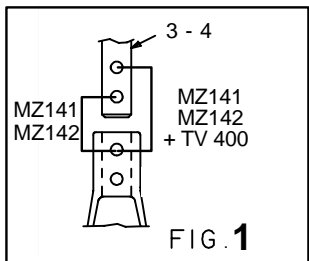
NISSAN

613.300

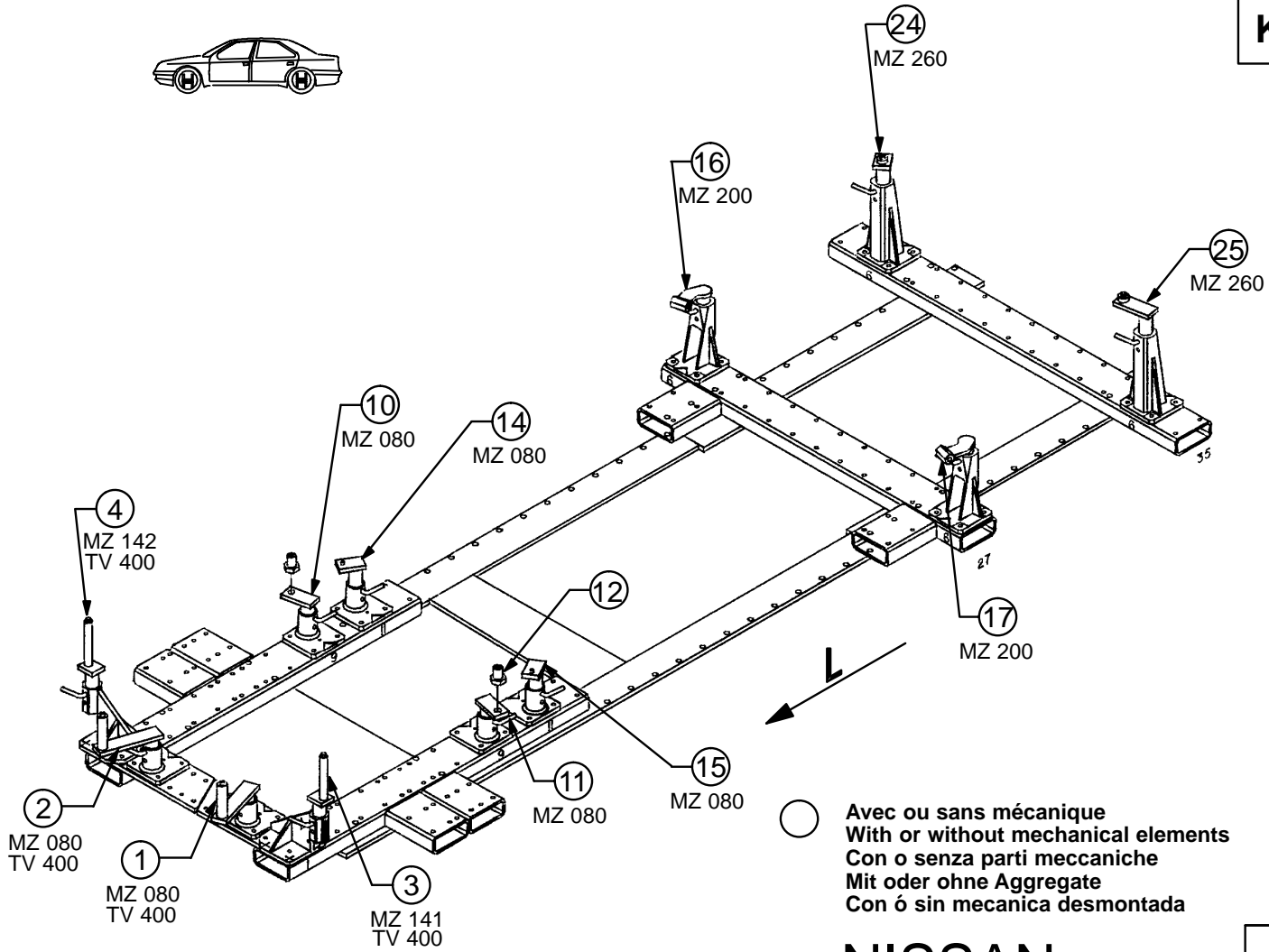
51 Kg	22.04.91	410-D-44A
-------	----------	-----------



1 2 3 4 5 6 7 8 9 10 11 12 13 14 15 16 17 18 19 20 21 22 23 24 25 26 27 28 29 30 31 32 33 34 35 36



B13	SUNNY - SENTRA
N14	SUNNY - PULSAR
KB13	NX COUPE - 100NX

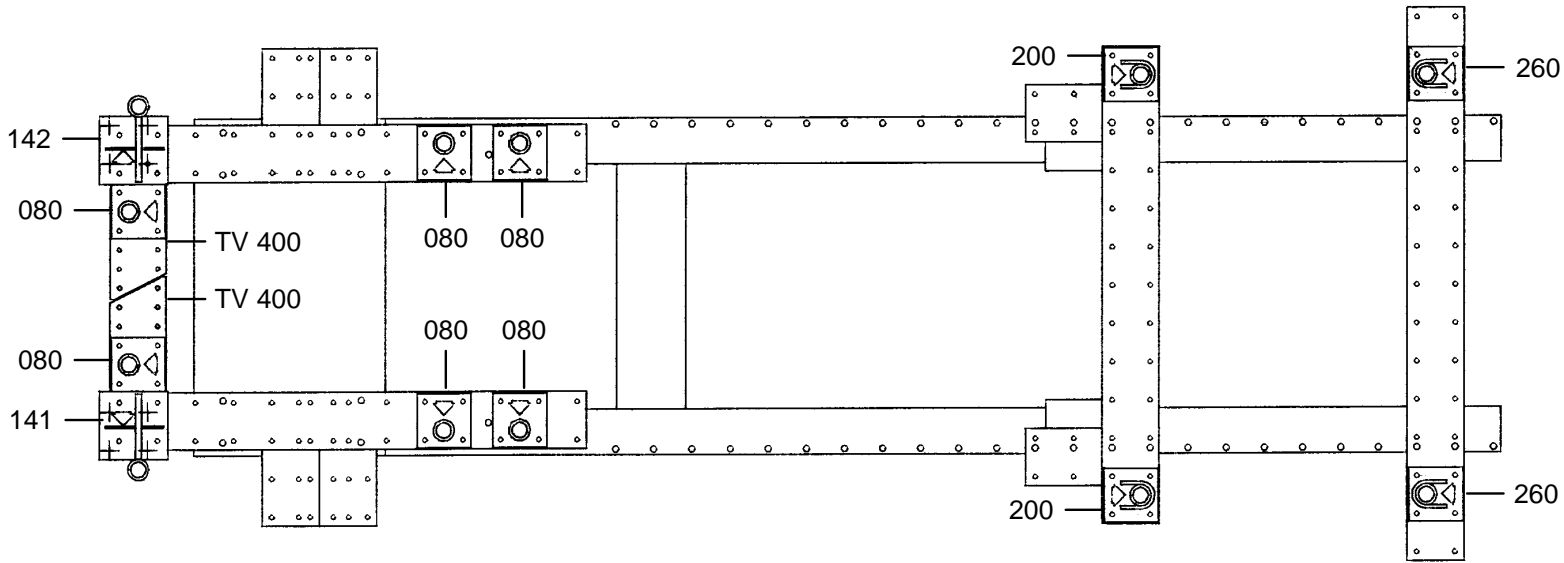


○ Avec ou sans mécanique
With or without mechanical elements
Con o senza parti meccaniche
Mit oder ohne Aggregate
Con ó sin mecanica desmontada

NISSAN

613.300

51 Kg | 22.04.91 | 410-D-44B



1 2 3 4 5 6 7 8 9 10 11 12 13 14 15 16 17 18 19 20 21 22 23 24 25 26 27 28 29 30 31 32 33 34 35 36

