

REP.	REFERENCE	PDS	NB	MZ
1	611.701	1,8	1	140
2	611.702	1,8	1	140
3	611.703	1,5	1	140
4	611.704	1,5	1	140
5	611.705	2,3	1	200/080
6	611.706	2,3	1	200/080
7	611.707	0,5	2	
8	611.708	2,8	1	602
9	611.709	2,8	1	601
10	611.710	2,0	1	
11	611.711	2,0	1	
12	611.712	0,5	2	
13	611.713	1,5	1	080
14	611.714	1,5	1	080
15	611.715	1,8	1	200
16	611.716	1,6	1	200
17	611.717	1,5	1	080
18	611.718	1,5	1	080
19	611.719	0,2	4	
20	611.720	0,6	4	
21	611.721	3,5	1	260
22	611.722	3,5	1	260
23	611.723	0,5	2	
24	611.724	1,8	1	200
25	611.725	1,8	1	200
26	611.726	3,3	1	142
27	611.727	3,3	1	141
28	611.728	0,2	2	

	M10.125x30 M12.125x20 M12x20 M12x25 M12x40 M12.125x70	4 6 2 4 4 4
--	--	----------------------------

	M12.125 M12	4 4
--	----------------	--------

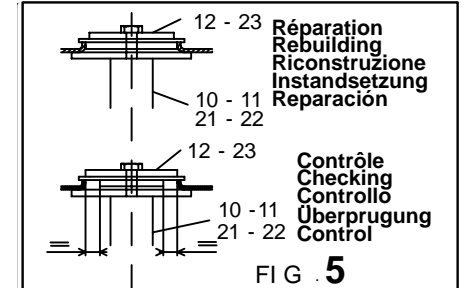
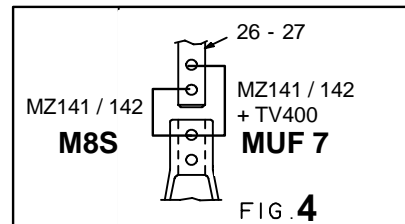
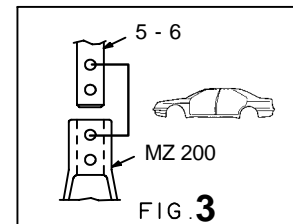
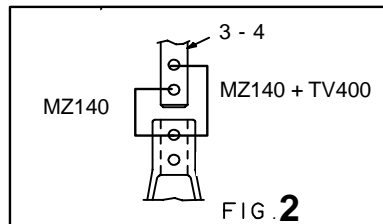
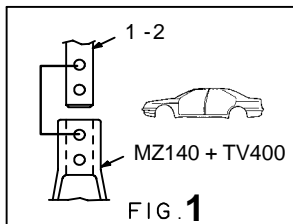
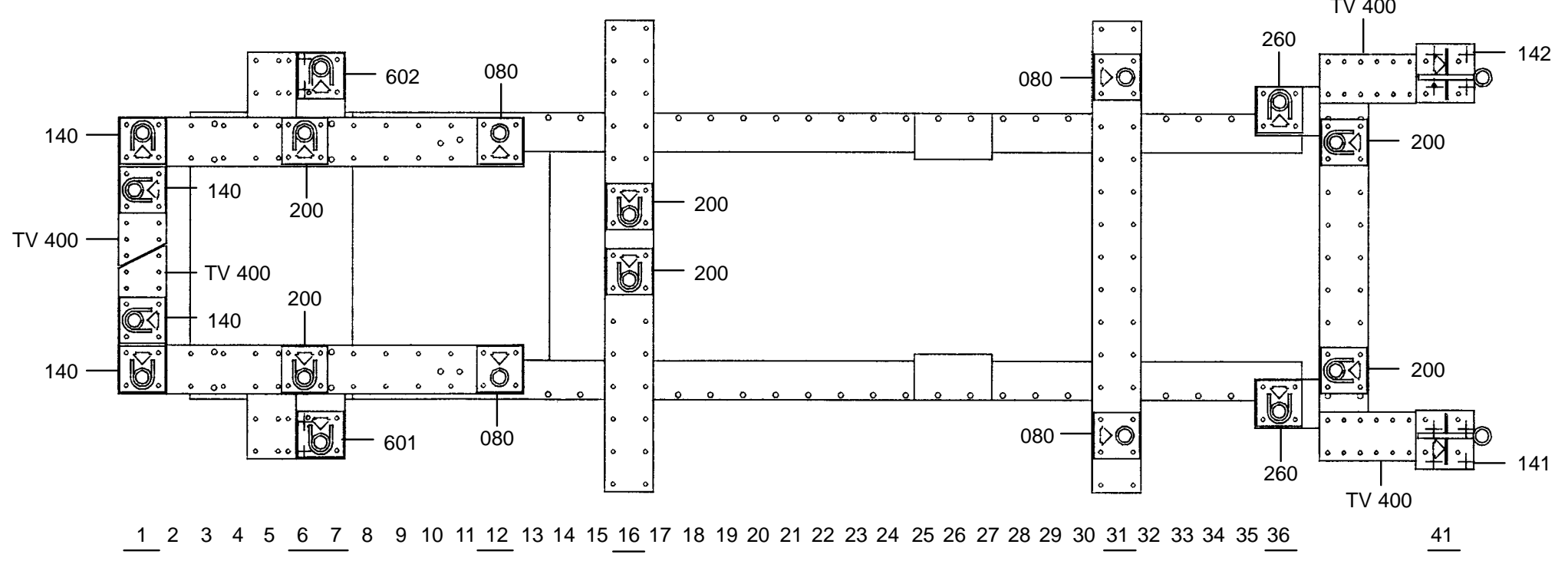
	M12	8
--	-----	---

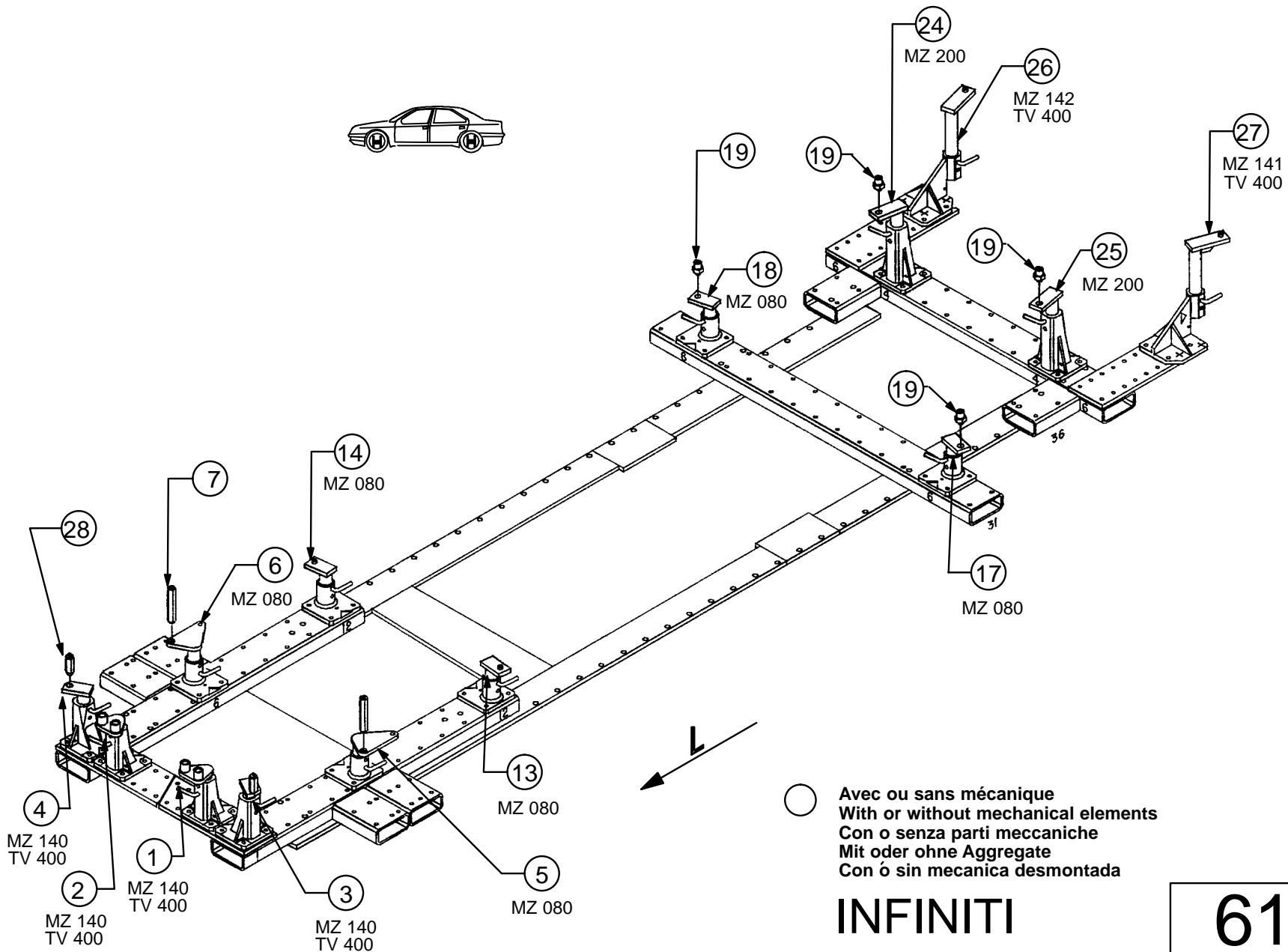
○ Avec ou sans mécanique
With or without mechanical elements
Con o senza parti meccaniche
Mit oder ohne Aggregate
Con ó sin mecánica desmontada

INFINITI

611.300

55 Kg	04.02.91	410-D-42A
-------	----------	-----------





○ Avec ou sans mécanique
 With or without mechanical elements
 Con o senza parti meccaniche
 Mit oder ohne Aggregate
 Con ó sin mecanica desmontada

INFINITI

611.300

55 Kg	04.02.91	410-D-42B
-------	----------	-----------

