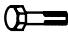


| REP. | REFERENCE | PDS | NB | MZ |
|------|-----------|-----|----|-----|
| 1 | 609.701 | 2,0 | 1 | 140 |
| 2 | 609.702 | 3,5 | 1 | 142 |
| 3 | 609.703 | 3,5 | 1 | 141 |
| 4 | 609.704 | 4,0 | 1 | 602 |
| 5 | 609.705 | 4,0 | 1 | 601 |
| 6 | 609.706 | 0,9 | 2 | |
| 7 | 609.707 | 2,9 | 1 | 200 |
| 8 | 609.708 | 2,9 | 1 | 200 |
| 9 | 609.709 | 3,2 | 1 | 080 |
| 10 | 609.710 | 3,2 | 1 | 080 |
| 11 | 609.711 | 1,6 | 1 | 140 |
| 12 | 609.712 | 1,6 | 1 | 140 |
| 13 | 609.713 | 3,0 | 1 | 080 |
| 14 | 609.714 | 3,0 | 1 | 080 |
| 15 | 609.715 | 1,1 | 1 | |
| 16 | 609.716 | 1,1 | 1 | |
| 17 | 609.717 | 3,8 | 1 | 601 |
| 18 | 609.718 | 3,8 | 1 | 602 |
| 19 | 609.719 | 1,2 | 2 | |
| 20 | 609.720 | 3,3 | 1 | 260 |
| 21 | 609.721 | 2,9 | 1 | 260 |
| 22 | 609.722 | 2,5 | 1 | 260 |
| 23 | 609.723 | 2,5 | 1 | 260 |
| | E42 | 0,1 | 2 | |

| | | |
|---|-------------|---|
|  | M 10x20 | 4 |
| | M 10.125x30 | 2 |
| | M 10.125x70 | 2 |
| | M 12x25 | 4 |
| | M 12x30 | 4 |
| | M 12.125x30 | 2 |
| | M 12x90 | 2 |
| M 14.150x60 | 2 | |
| M 14.150x120 | 2 | |

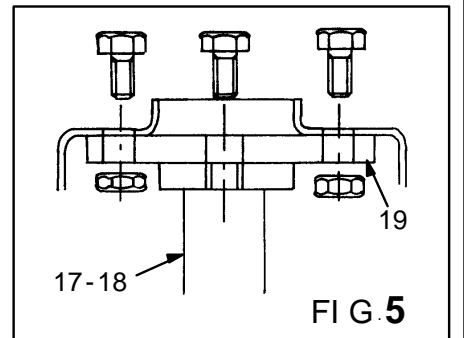
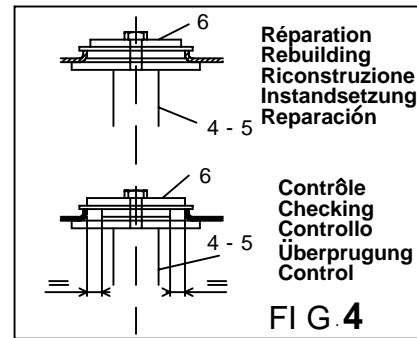
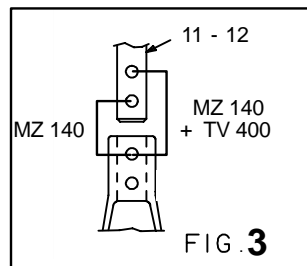
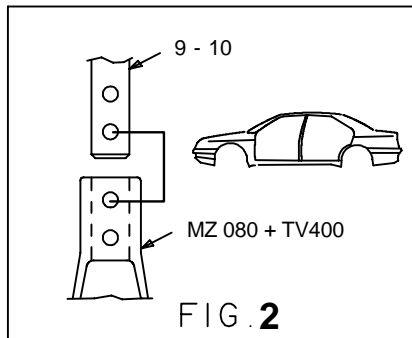
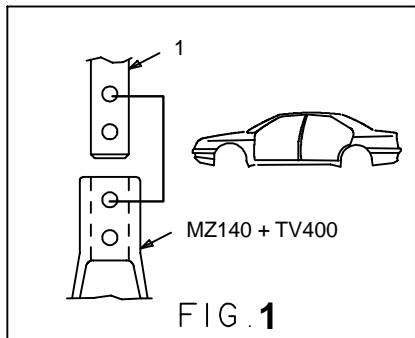
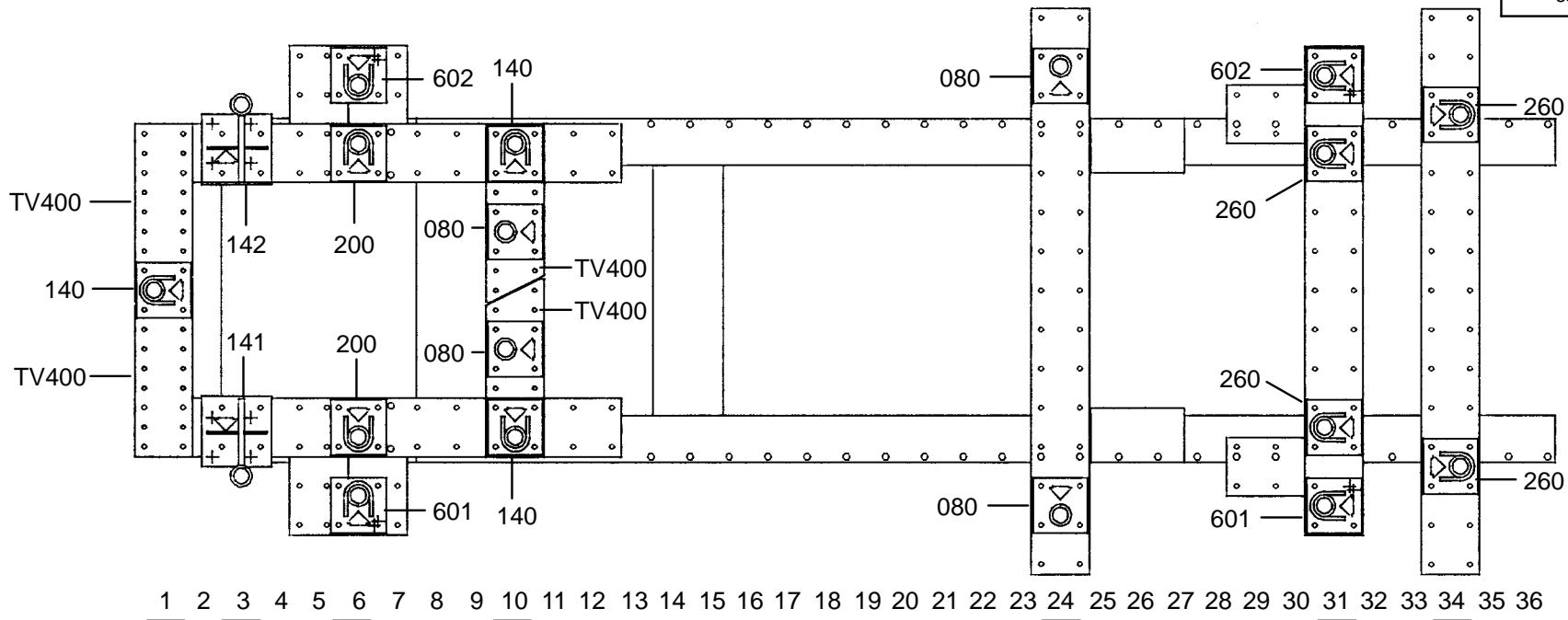
| | | |
|---|-------|---|
|  | HM 10 | 4 |
|---|-------|---|

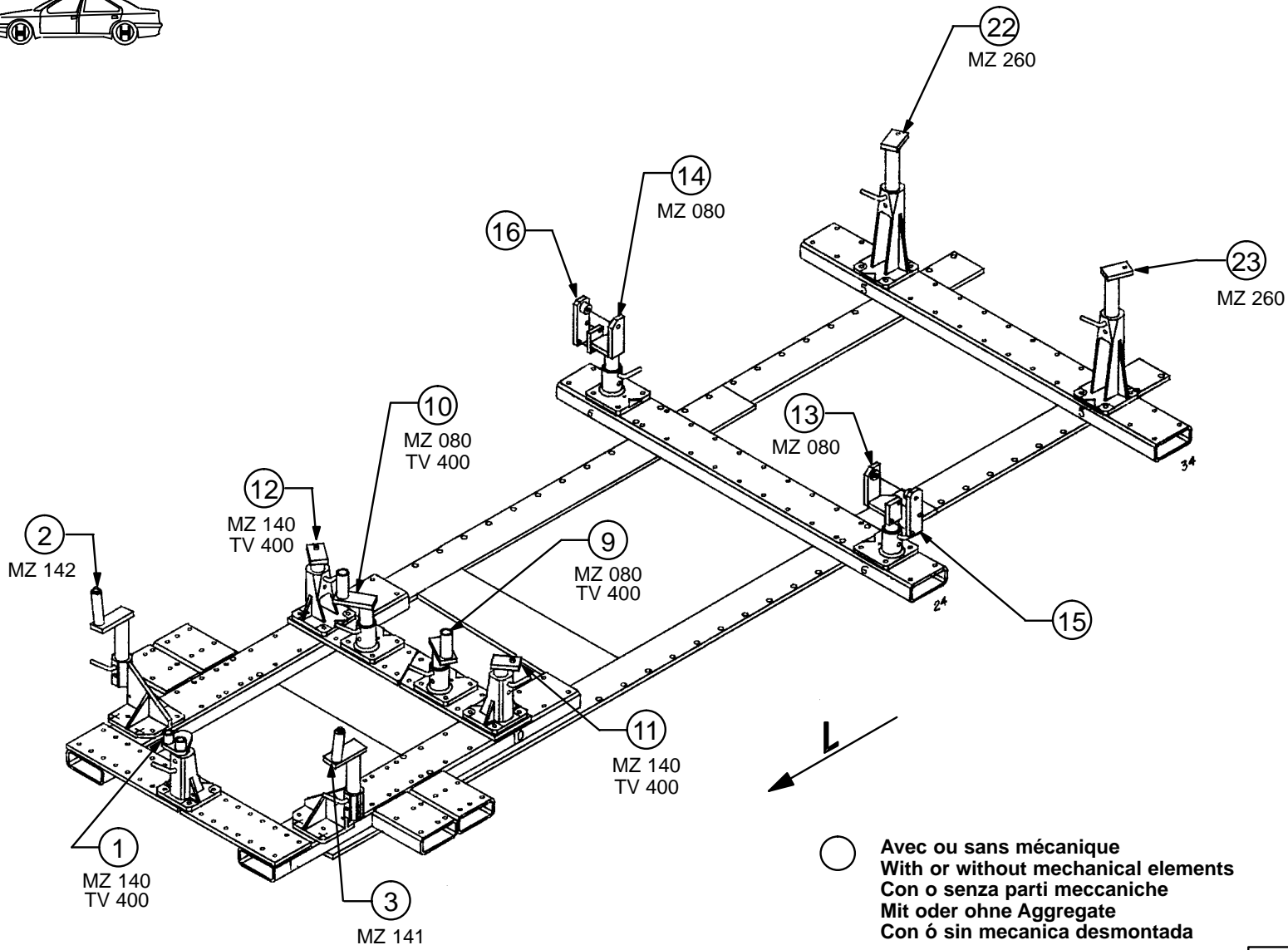
○ Avec ou sans mécanique
With or without mechanical elements
Con o senza parti meccaniche
Mit oder ohne Aggregate
Con ó sin mecanica desmontada

GM / ISUZU

609.300

65 Kg | 29.03.91 | 440-D-16A





○ Avec ou sans mécanique
With or without mechanical elements
Con o senza parti meccaniche
Mit oder ohne Aggregate
Con ó sin mecánica desmontada

GM / ISUZU

609.300

65 Kg | 29.03.91 | 440-D-16B

