

○ Avec ou sans mécanique
 With or without mechanical elements
 Con o senza parti meccaniche
 Mit oder ohne Aggregate
 Con ó sin mecanica desmontada

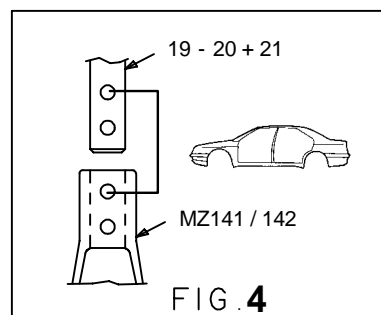
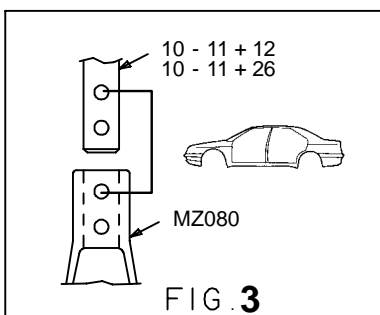
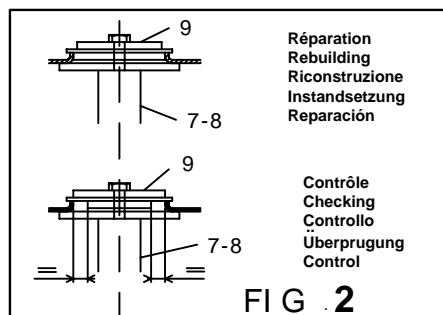
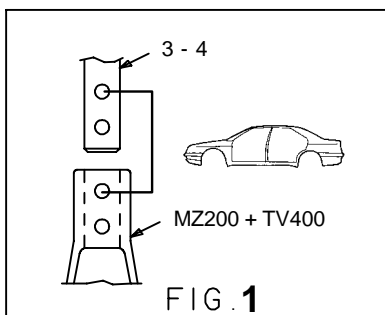
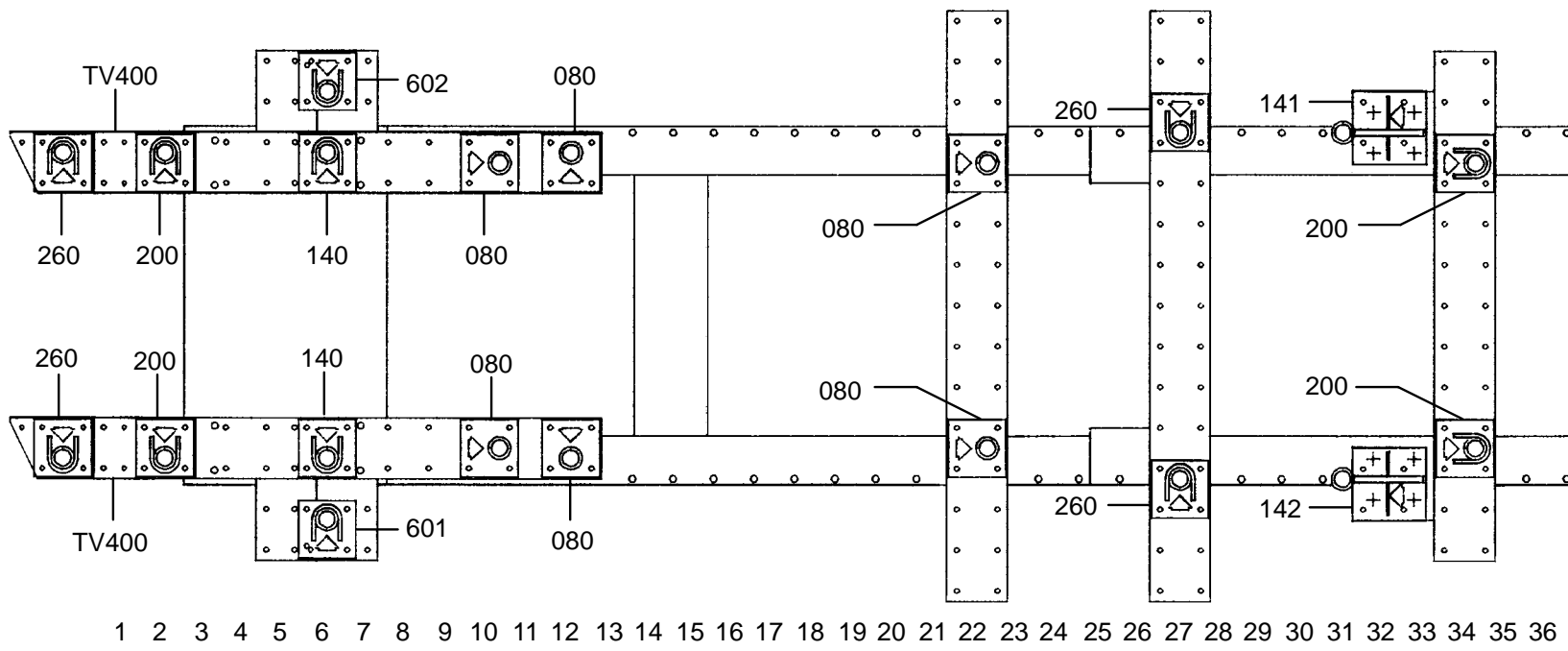
MAZDA

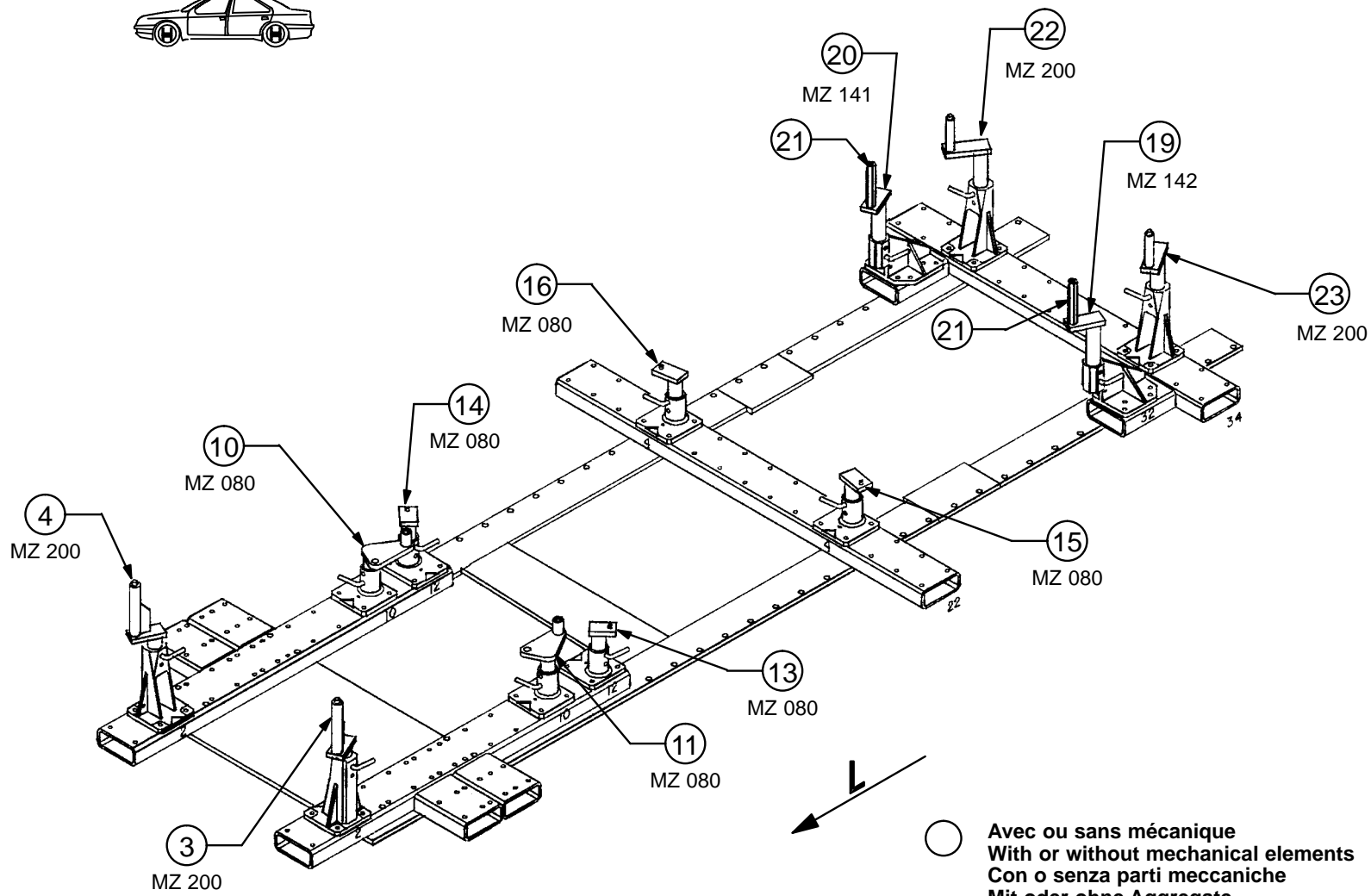
REP.	REFERENCE	PDS	NB	MZ
1	600.701	2,4	1	260
2	600.702	2,4	1	260
3	600.703	2,4	1	200
4	600.704	2,4	1	200
5	600.705	3,2	1	140
6	600.706	3,2	1	140
7	600.707	1,5	1	601
8	600.708	1,5	1	602
9	600.709	0,4	2	
10	600.710	2,5	1	080
11	600.711	2,5	1	080
12	600.712	0,9	2	
13	600.713	1,7	1	080
14	600.714	1,7	1	080
15	600.715	1,9	1	080
16	600.716	1,9	1	080
17	600.717	3,3	1	260
18	600.718	3,3	1	260
19	600.719	2,9	1	142
20	600.720	2,9	1	141
21	600.721	0,8	2	
22	600.722	3,0	1	200
23	600.723	3,0	1	200
24	600.724	2,1	1	
25	600.725	2,1	1	
26	600.726	0,9	2	
	B.70	0,1	2	
	ME.975.745	0,2	2	

M 10x80	2
M 10.125x70	2
M 12.125x35	2
M 12.125x70	2
M 12x25	6
CHc 6x60	2
M 10	2
LLU 12	4

600.300

61 Kg 20.11.90 419-D-17A



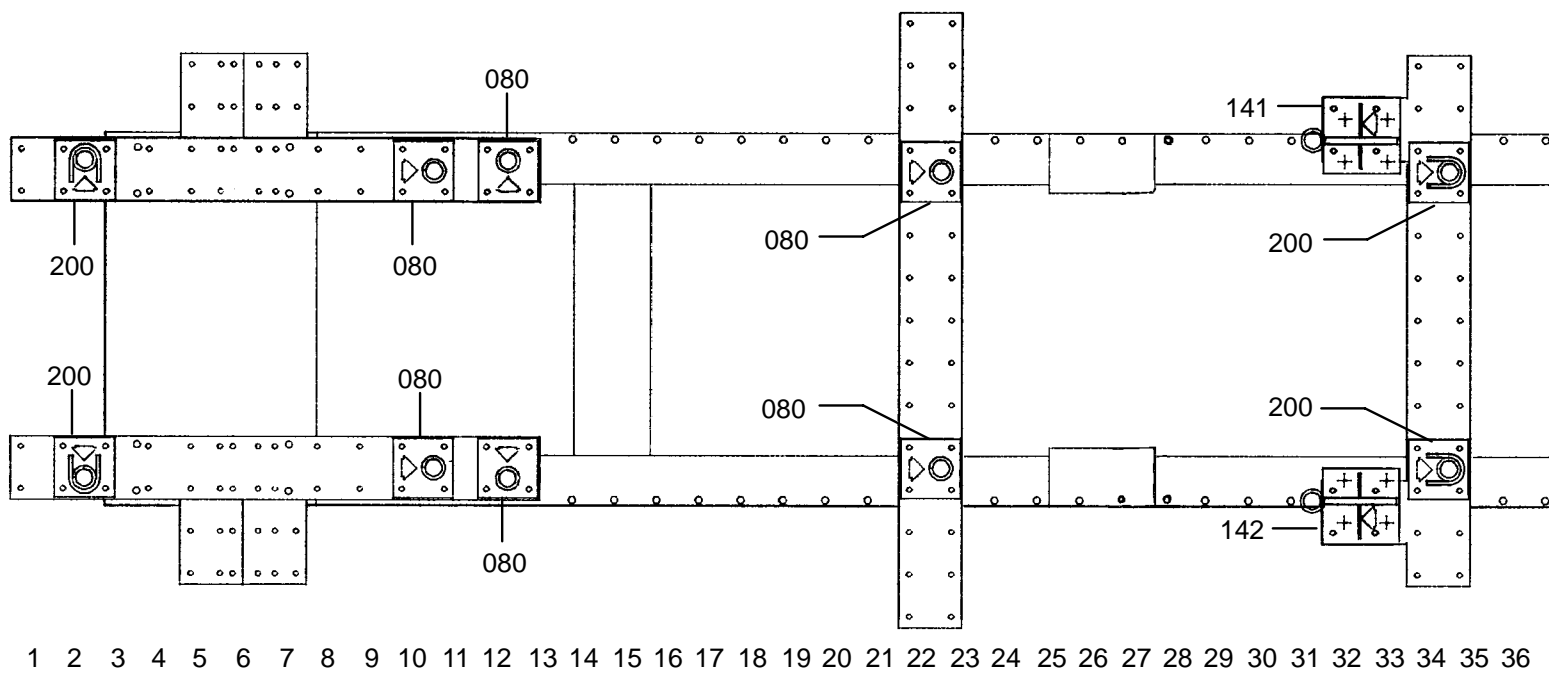


○ Avec ou sans mécanique
 With or without mechanical elements
 Con o senza parti meccaniche
 Mit oder ohne Aggregate
 Con ó sin mecanica desmontada

MAZDA

600.300

61 Kg 02.04.93 419-D-17B



1 2 3 4 5 6 7 8 9 10 11 12 13 14 15 16 17 18 19 20 21 22 23 24 25 26 27 28 29 30 31 32 33 34 35 36

