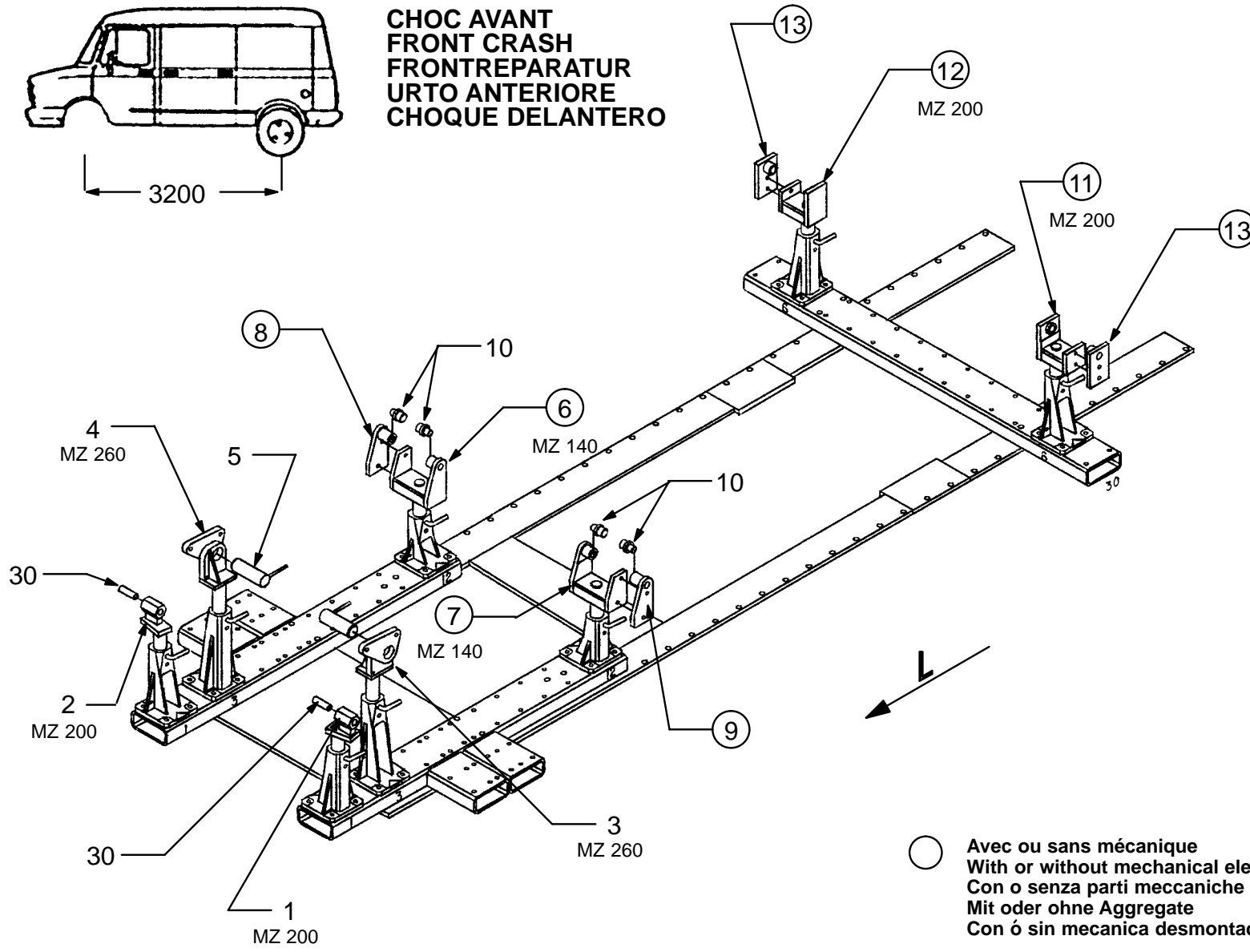


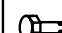

CHOC AVANT
 FRONT CRASH
 FRONTREPARATUR
 URTO ANTERIORE
 CHOQUE DELANTERO



○ Avec ou sans mécanique
 With or without mechanical elements
 Con o senza parti meccaniche
 Mit oder ohne Aggregate
 Con ó sin mecanica desmontada

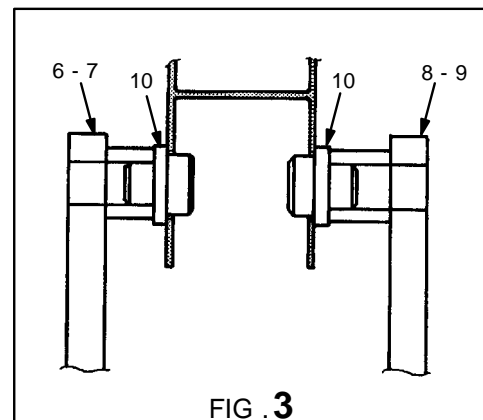
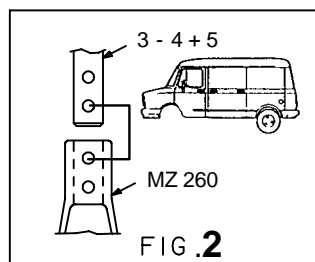
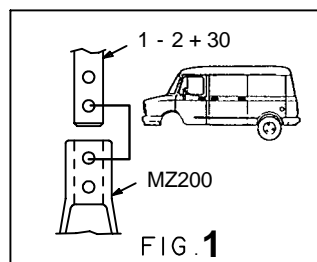
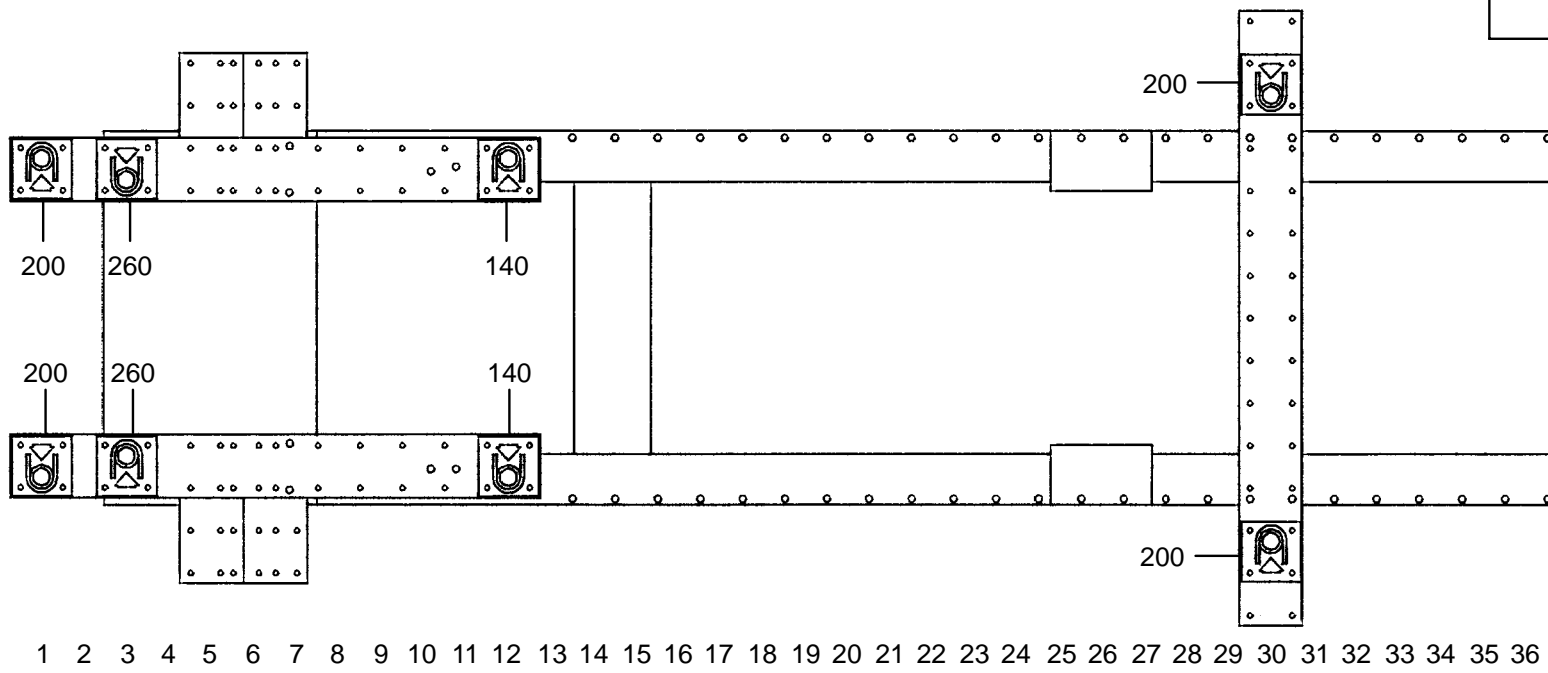
LEYLAND / DAF

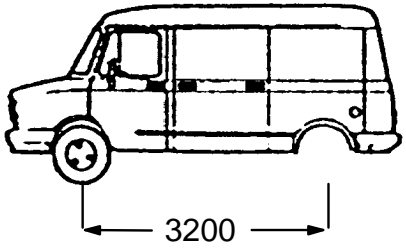
REP.	REFERENCE	PDS	NB	MZ
1	591.701	2,6	1	200
2	591.702	2,6	1	200
3	591.703	4,7	1	260
4	591.704	4,7	1	260
5	591.705	1,4	2	
6	591.706	4,7	1	140
7	591.707	4,7	1	140
8	591.708	1,5	1	
9	591.709	1,5	1	
10	591.710	0,2	4	
11	591.711	4,0	1	200
12	591.712	4,0	1	200
13	591.713	1,2	2	
14	591.714	3,5	1	260
15	591.715	3,5	1	260
16	591.716	5,2	1	140
17	591.717	5,2	1	140
18	591.718	2,0	1	
19	591.719	2,0	1	
20	591.720	0,5	4	
21	591.721	3,3	1	140
22	591.722	3,3	1	140
23	591.723	1,2	2	
24	591.724	2,7	1	200
25	591.725	2,7	1	200
26	591.726	0,9	2	
27	591.727	0,2	2	
28	591.728	3,0	1	260
29	591.729	3,0	1	260
30	591.730	0,1	2	
31	591.731	0,3	2	
	E15	0,1	2	

	M12x25 M10x110	18 4
	M10	4

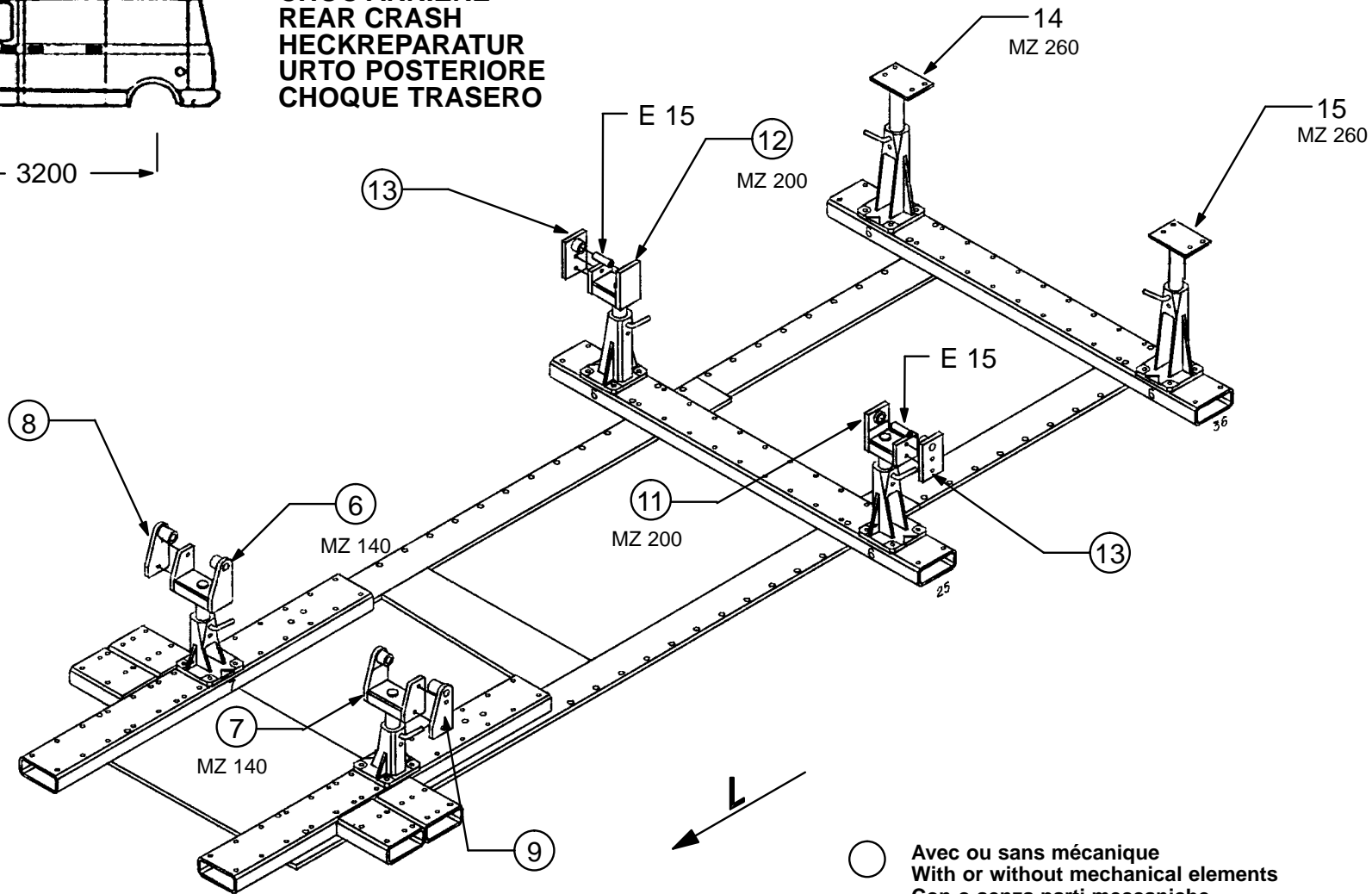
591.300

89 Kg 05.02.91 404-D-11A





CHOC ARRIERE
REAR CRASH
HECKREPARATUR
URTO POSTERIORE
CHOQUE TRASERO

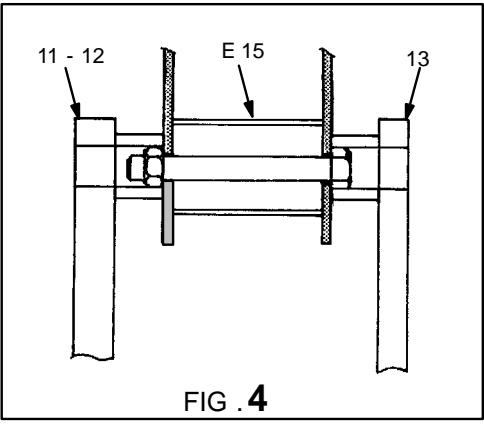
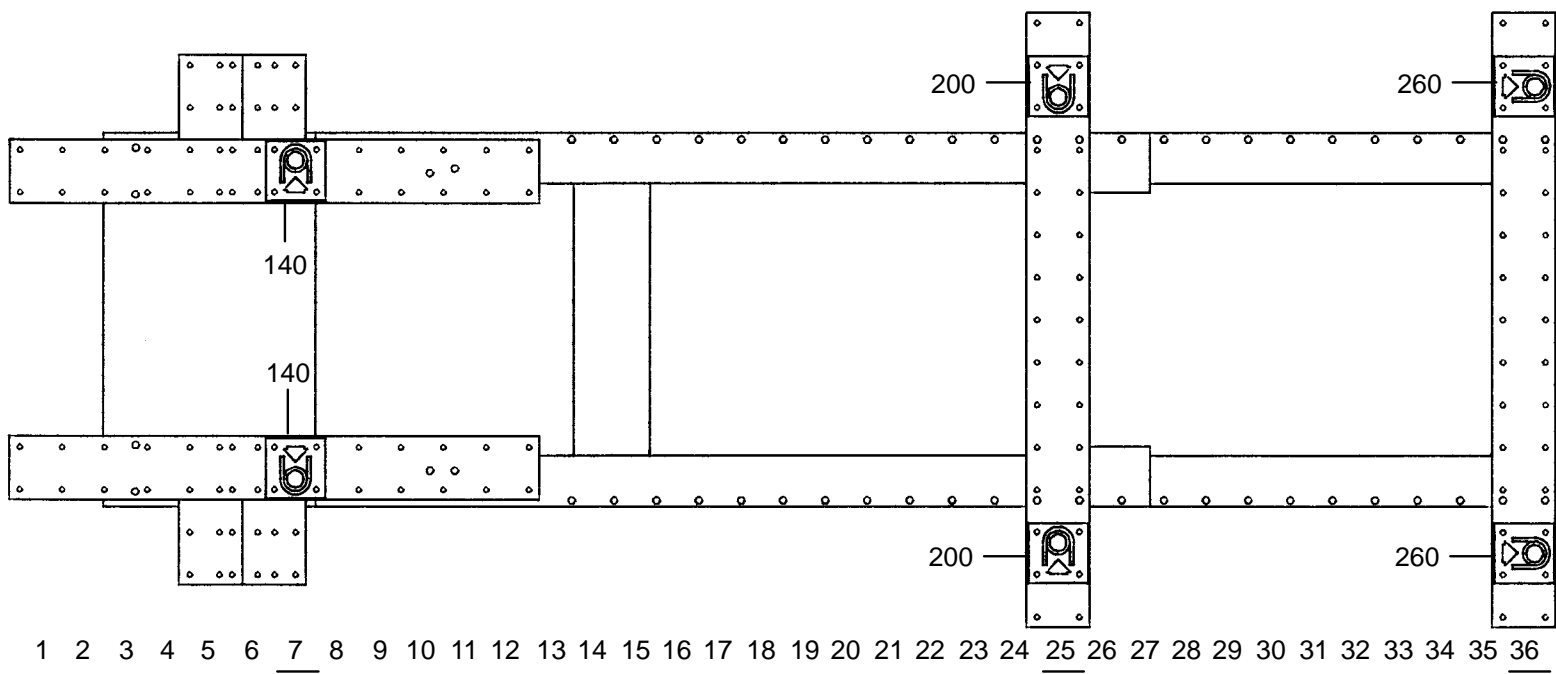


○ Avec ou sans mécanique
With or without mechanical elements
Con o senza parti meccaniche
Mit oder ohne Aggregate
Con ó sin mecanica desmontada

LEYLAND / DAF

591.300

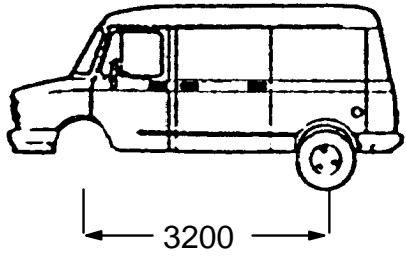
89 Kg | 29.11.90 | 404-D-11B



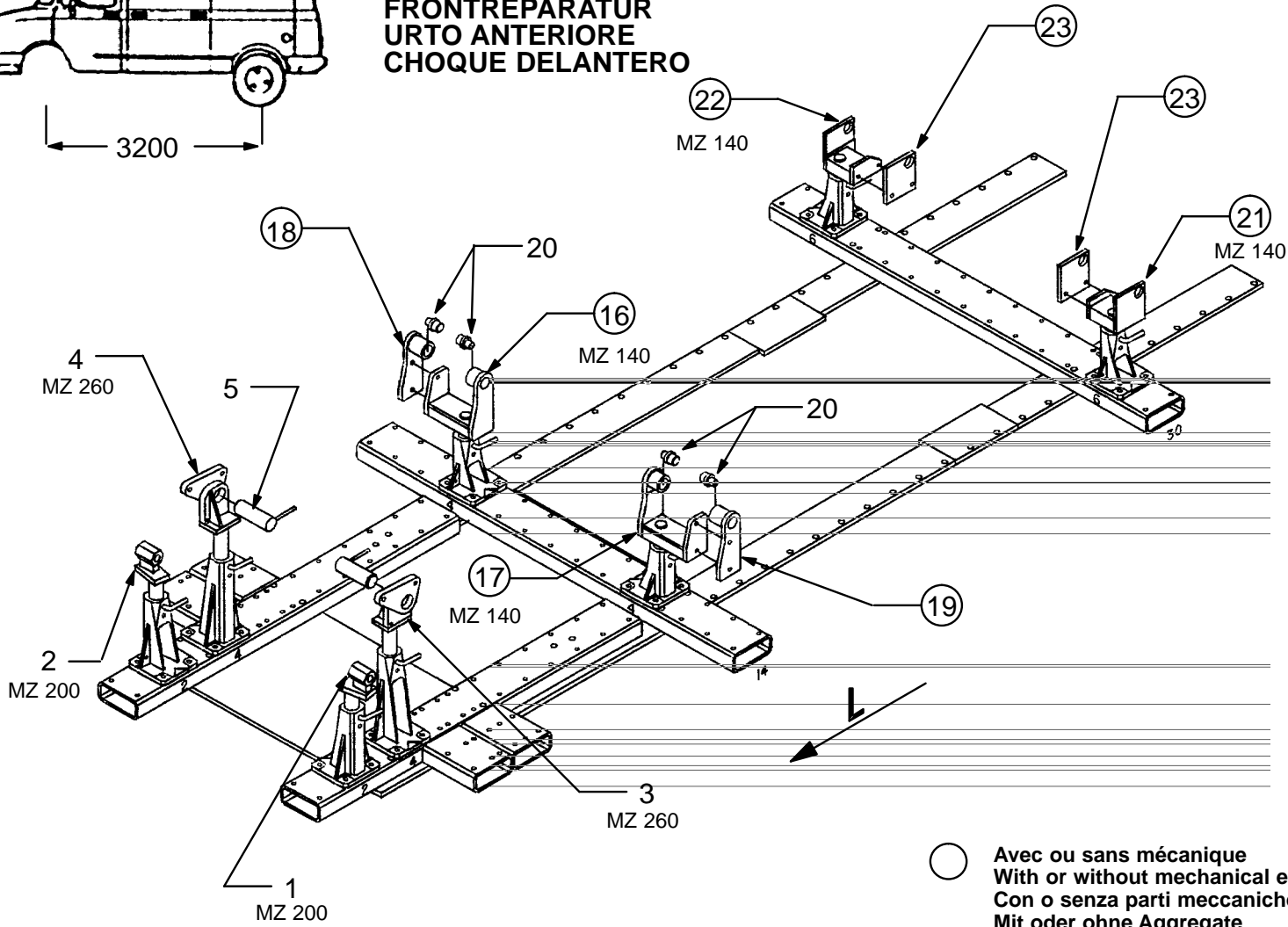


CELETTE®

LEYLAND SHERPA 300 - 400
DAF VA 431 - VA 435 - VS 428 - VH 428 - VD 428



CHOC AVANT
FRONT CRASH
FRONTREPARATUR
URTO ANTERIORE
CHOQUE DELANTERO

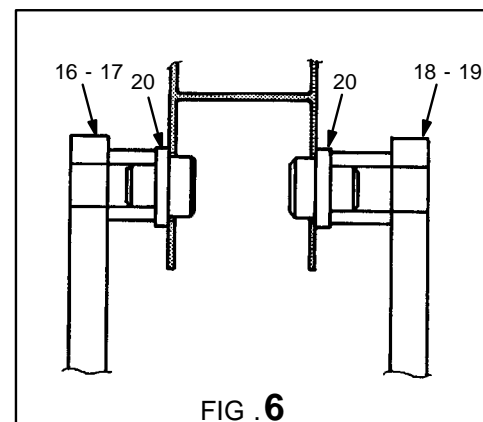
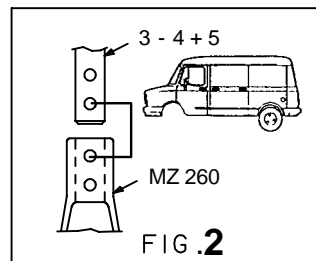
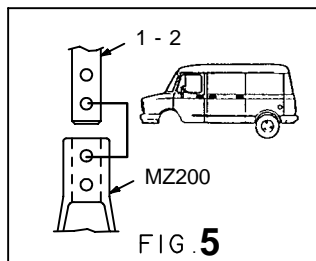
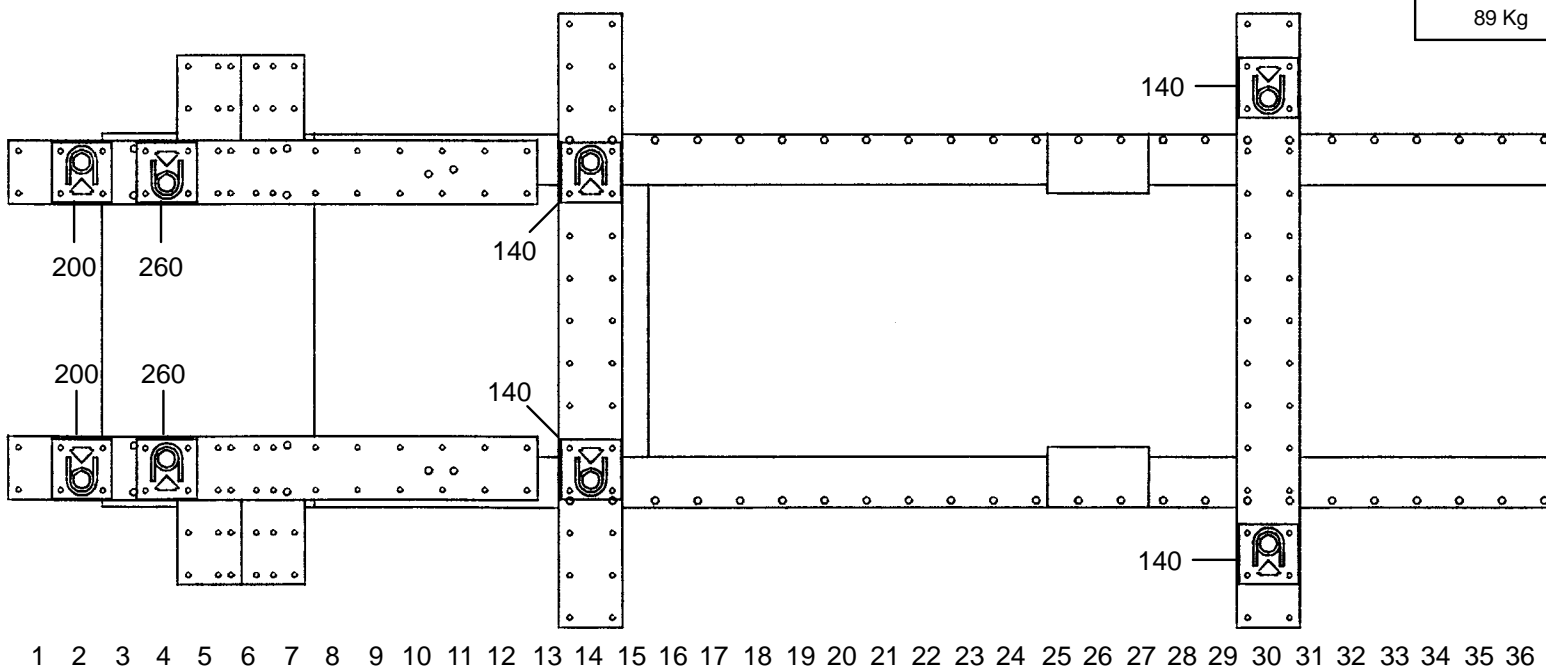


○ Avec ou sans mécanique
With or without mechanical elements
Con o senza parti meccaniche
Mit oder ohne Aggregate
Con ó sin mecanica desmontada

LEYLAND / DAF

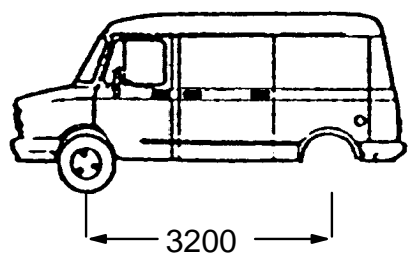
591.300

89 Kg | 29.11.90 | 404-D-11C

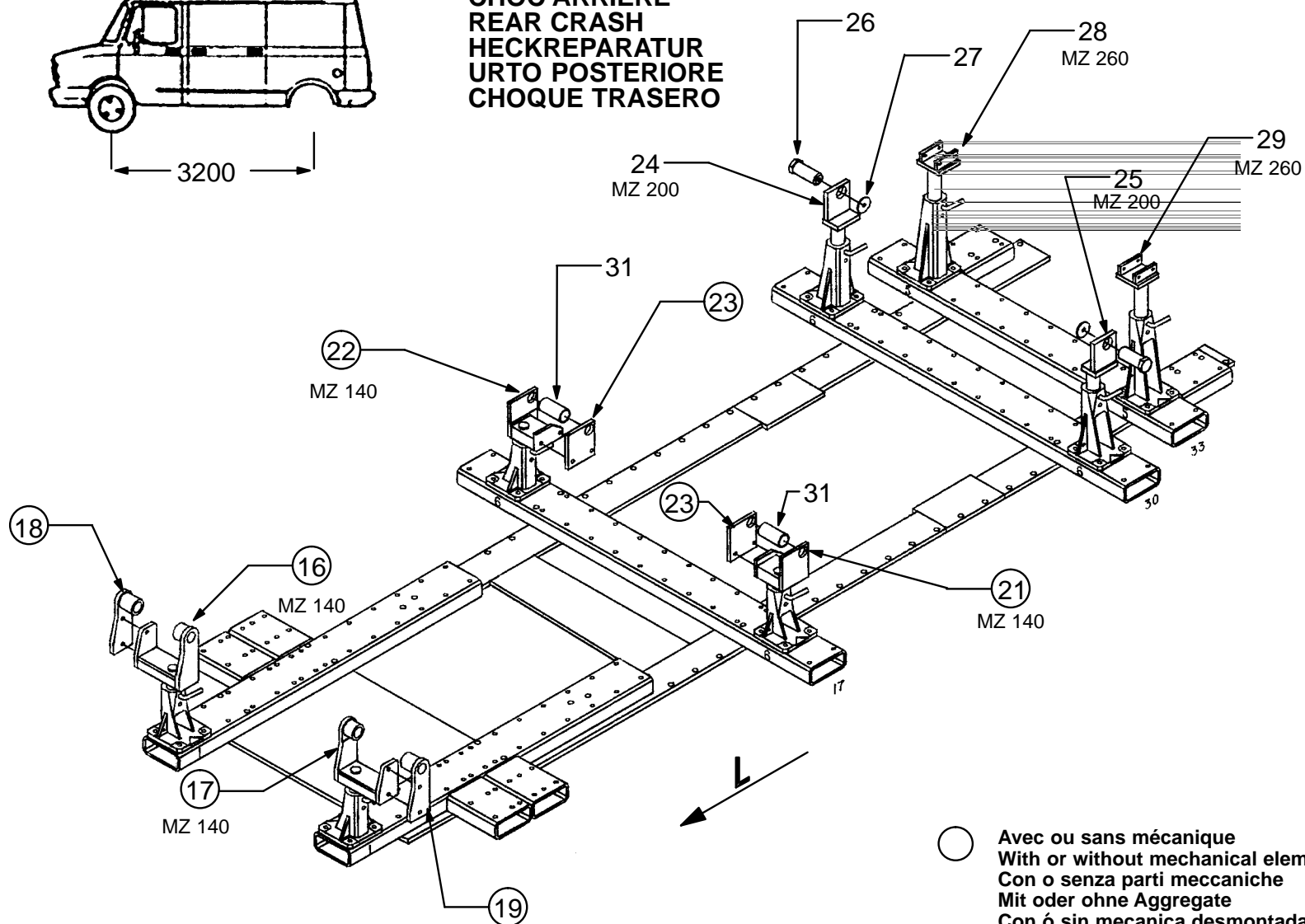


CELETTE®
VIENNE-FRANCE

© Copyright 1990 CELETTE S.A. - All rights reserved. No part of this document may be reproduced in any form, by photostat, xerography or any other means, or incorporated into any informational retrieval system, electronic or mechanical, without the permission of the copyright owner.



CHOC ARRIERE
 REAR CRASH
 HECKREPARATUR
 URTO POSTERIORE
 CHOQUE TRASERO

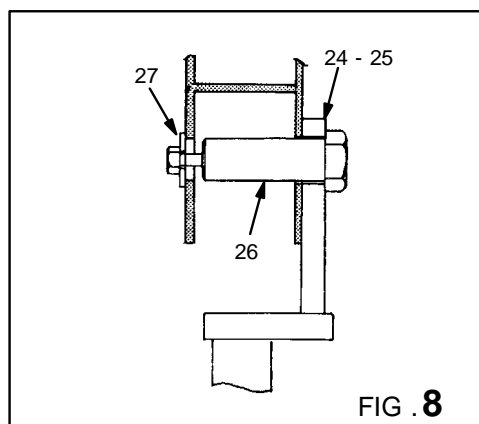
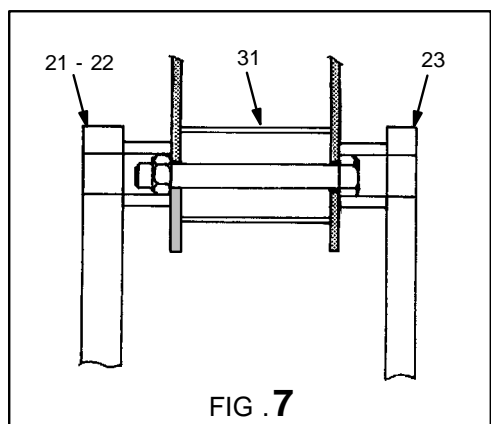
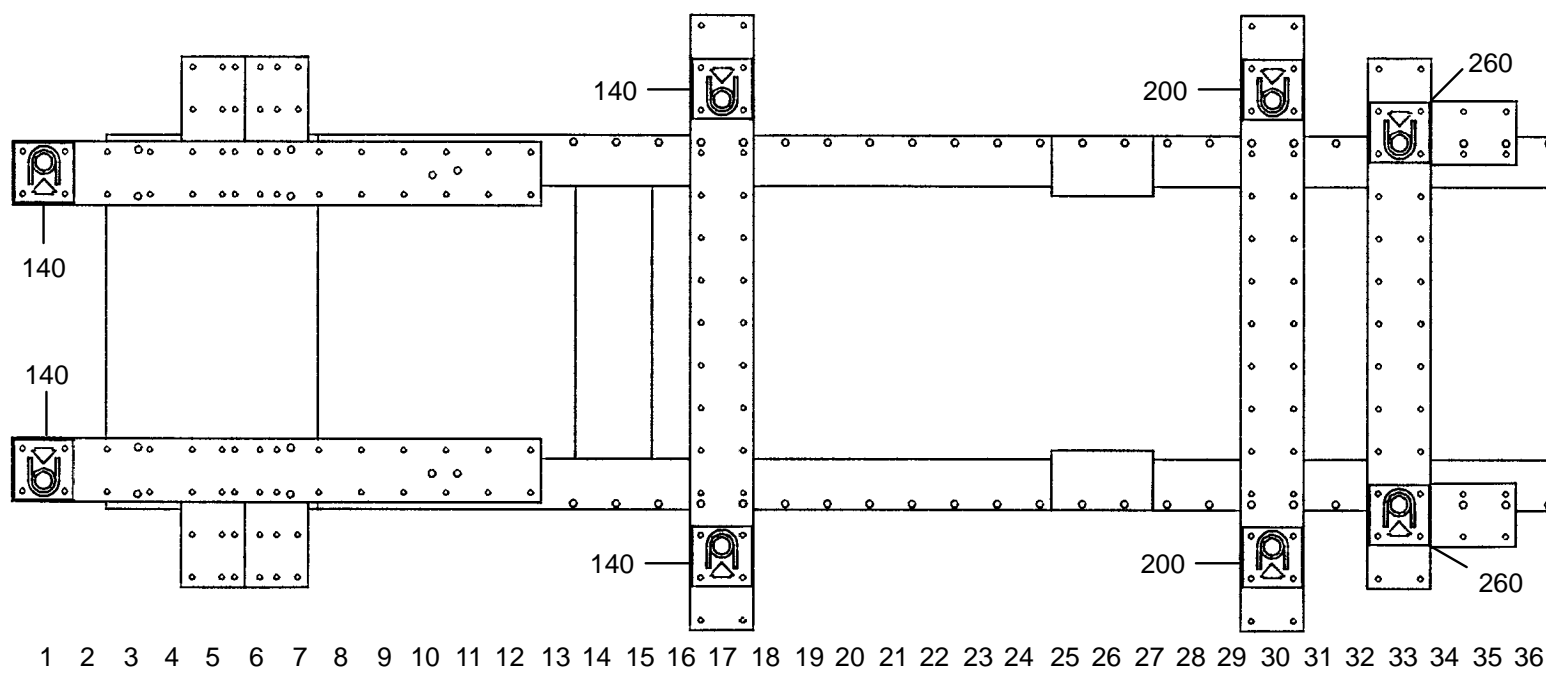


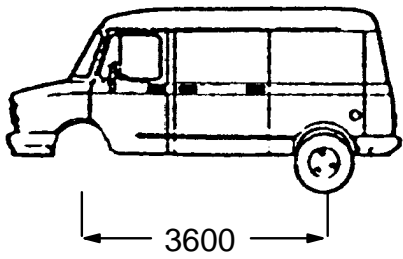
○ Avec ou sans mécanique
 With or without mechanical elements
 Con o senza parti meccaniche
 Mit oder ohne Aggregate
 Con ó sin mecanica desmontada

LEYLAND / DAF

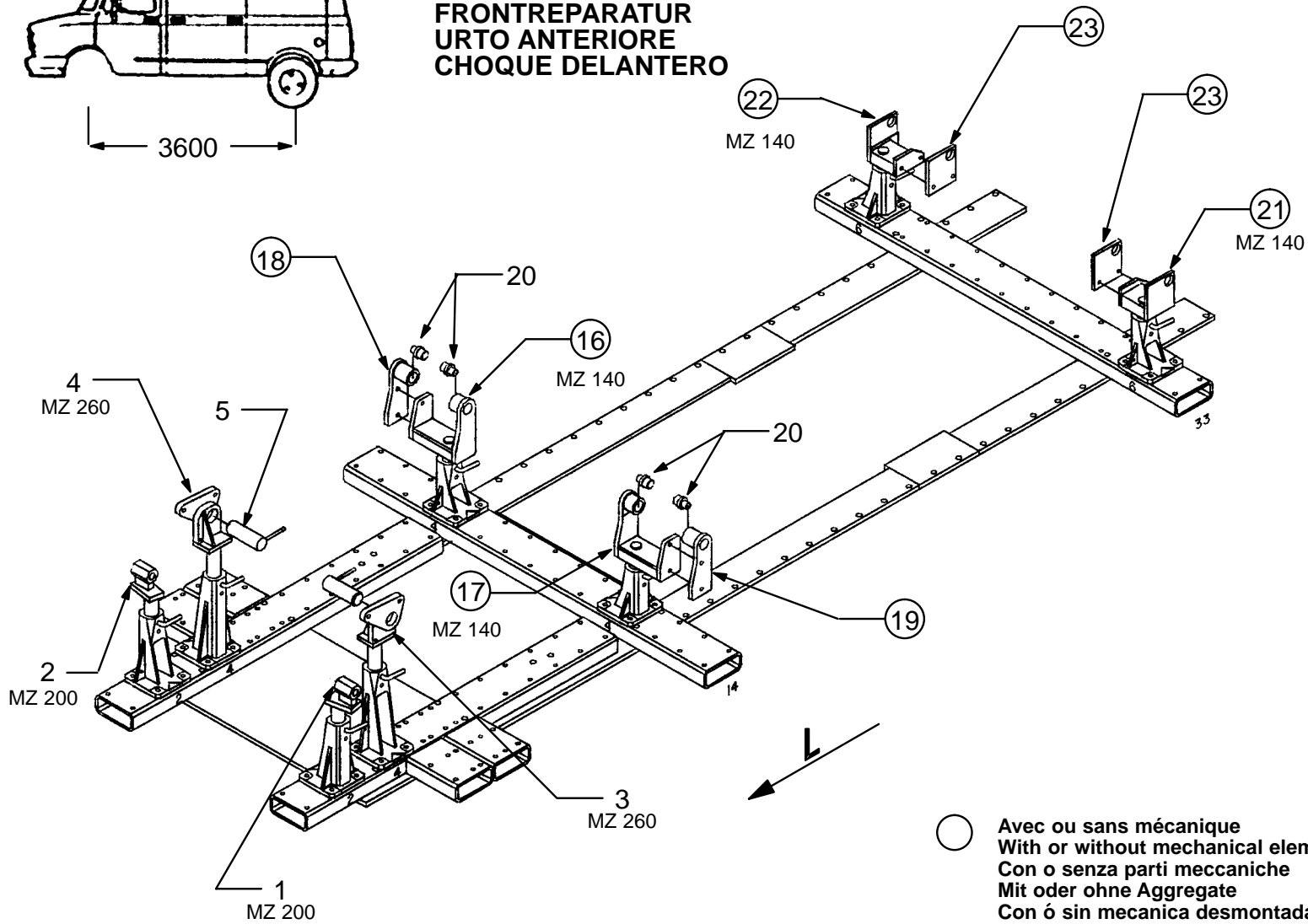
591.300

89 Kg | 29.11.90 | 404-D-11D





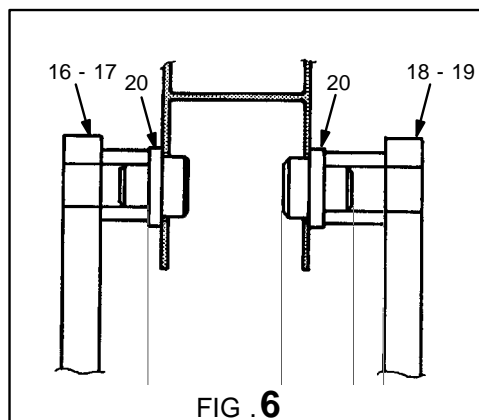
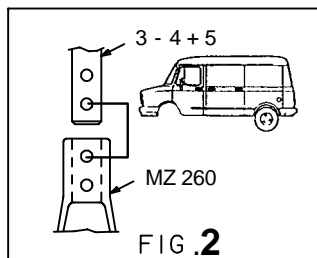
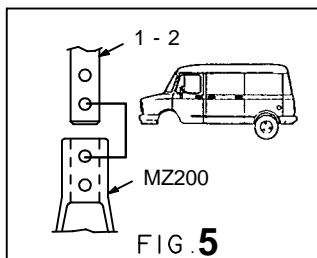
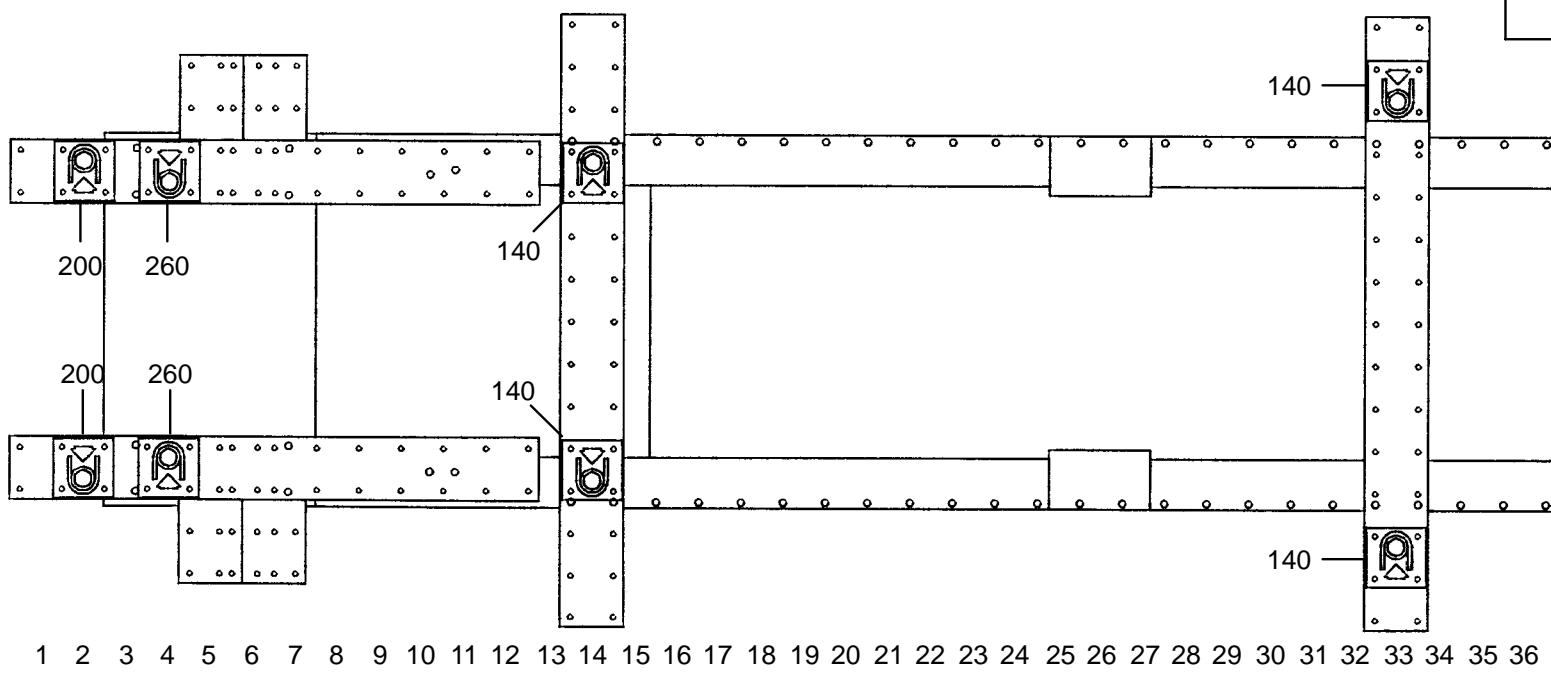
CHOC AVANT
 FRONT CRASH
 FRONTREPARATUR
 URTO ANTERIORE
 CHOQUE DELANTERO

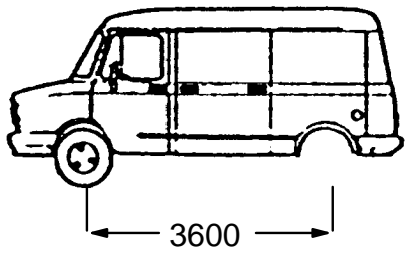


LEYLAND / DAF

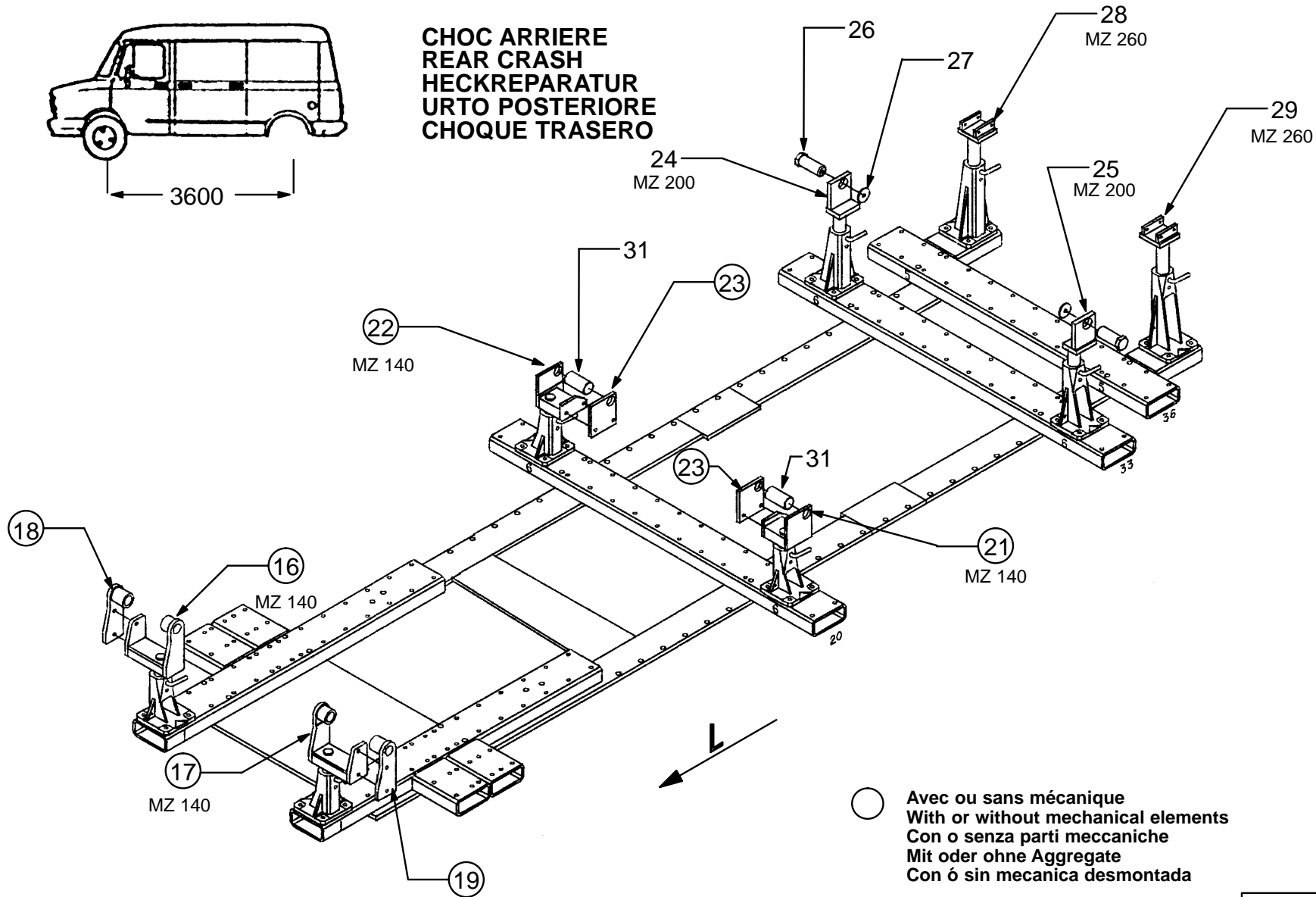
591.300

89 Kg | 29.11.90 | 404-D-11E





CHOC ARRIERE
REAR CRASH
HECKREPARATUR
URTO POSTERIORE
CHOQUE TRASERO



LEYLAND / DAF

591.300

89 Kg | 29.11.90 | 404-D-11F

