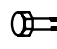




○ Avec ou sans mécanique  
 With or without mechanical elements  
 Con o senza parti meccaniche  
 Mit oder ohne Aggregate  
 Con ó sin mecanica desmontada

REP.	REFERENCE	PDS	NB	MZ
1	586.701	1,4	1	141
2	586.702	1,4	1	142
3	586.703	1,4	1	200
4	586.704	1,4	1	200
5	586.705	2,1	1	140
6	586.706	2,1	1	140
7	586.707	1,8	1	260
8	586.708	1,8	1	260
9	586.709	3,0	1	601
10	586.710	3,0	1	602
11	586.711	0,3	2	
12	586.712	1,9	1	
13	586.713	1,9	1	
14	586.714	1,4	1	080
15	586.715	1,4	1	080
16	586.716	3,8	1	080
17	586.717	3,8	1	080
18	586.718	0,4	2	
19	586.719	0,6	4	
20	586.720	3,4	1	260
21	586.721	3,4	1	260
22	586.722	0,2	2	
23	586.723	1,9	1	200
24	586.724	1,9	1	200
25	586.725	0,2	2	
26	586.726	2,7	1	260
27	586.727	2,7	1	260

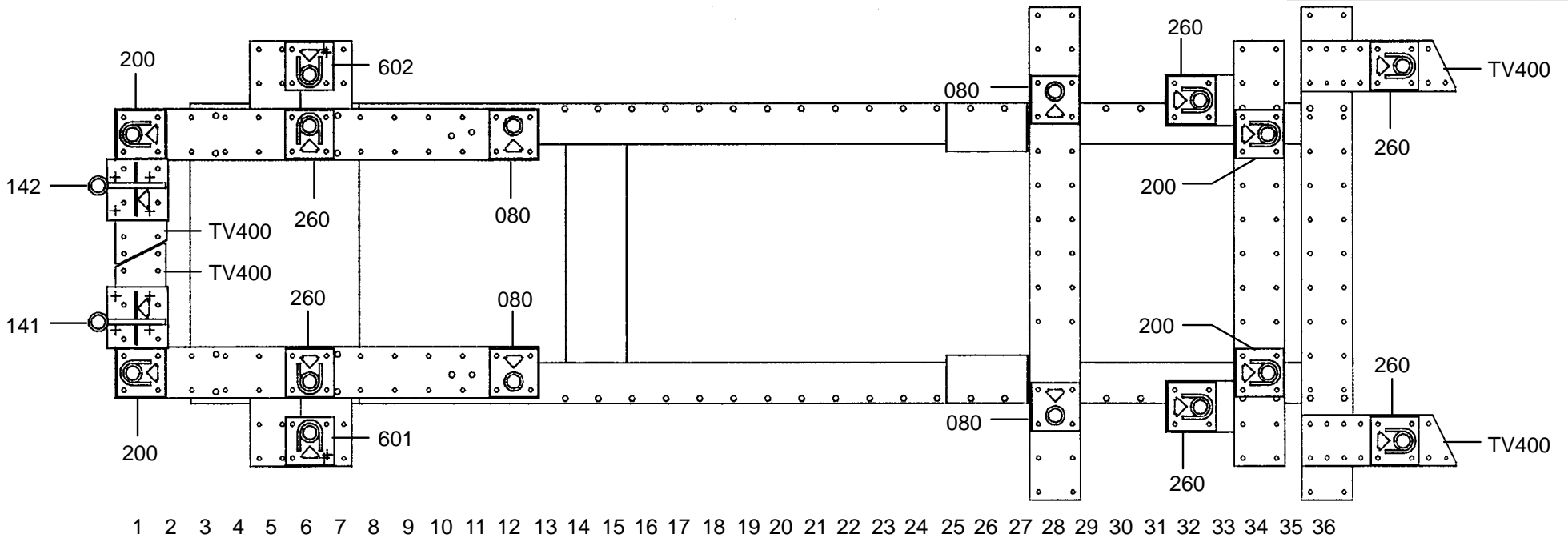
  

	M 6x25	2
	M 10.125x130	4
	M 12x30	4
	M 12x45	4
	M 12x70	4
	M 12.125x20	4
	M 12	8
	LU 12	4

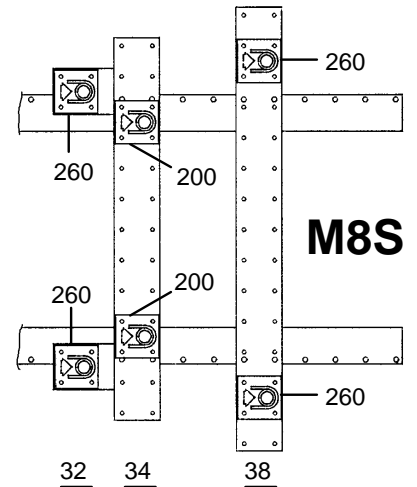
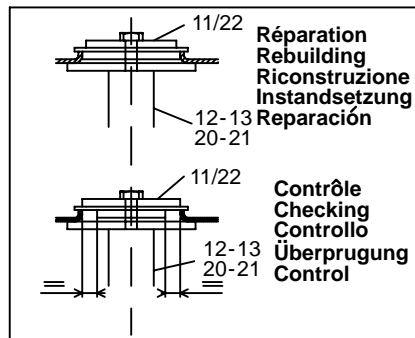
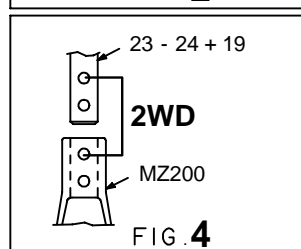
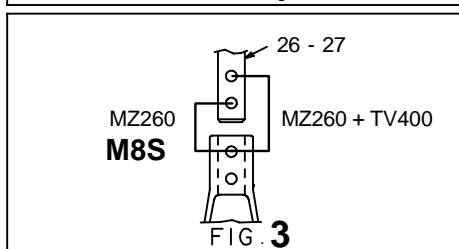
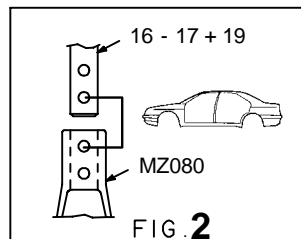
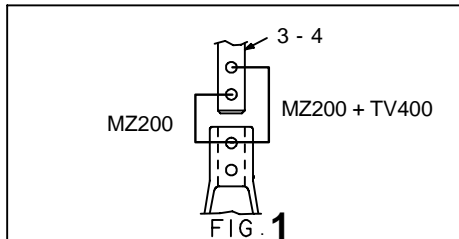
**NISSAN**

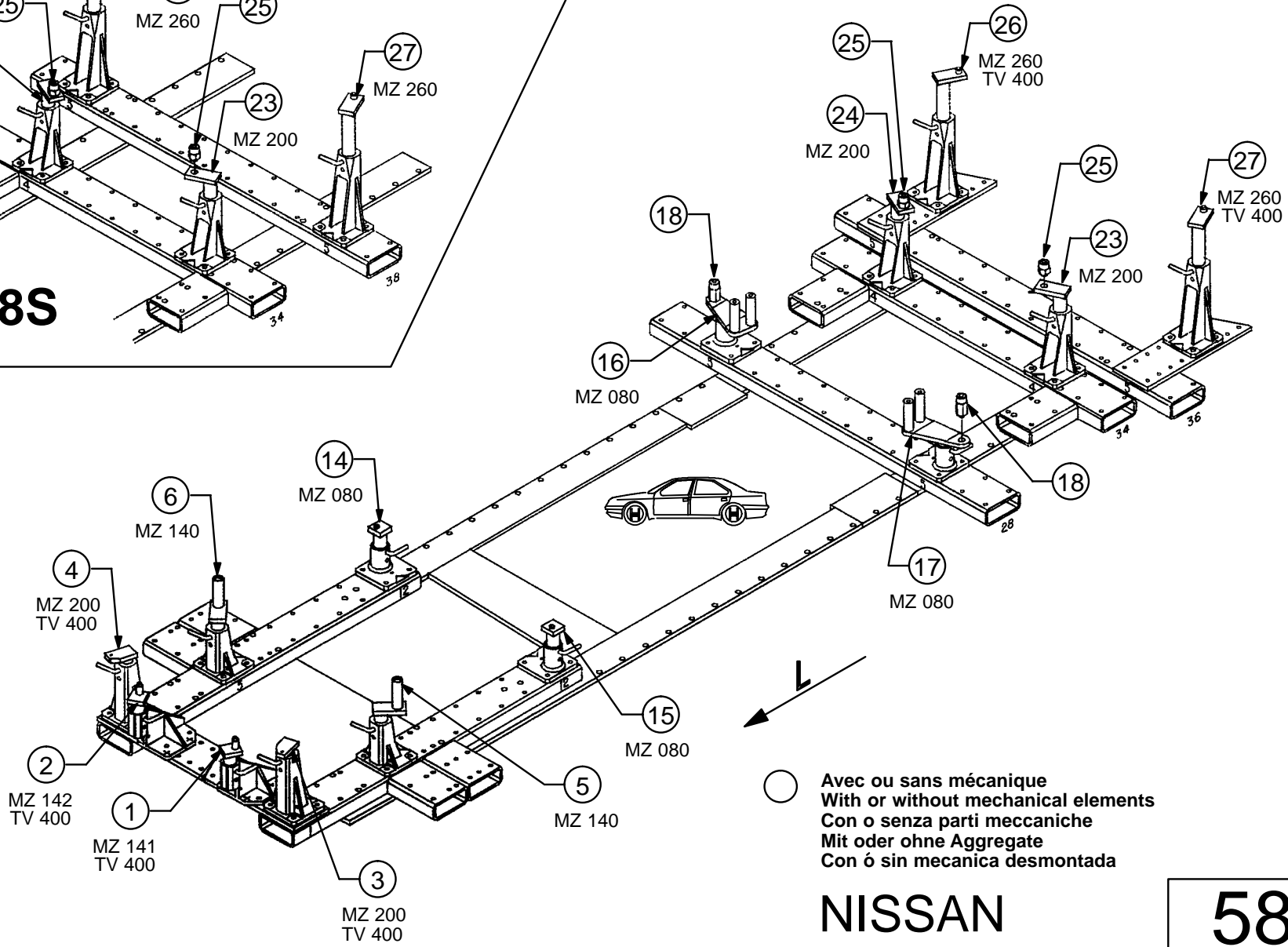
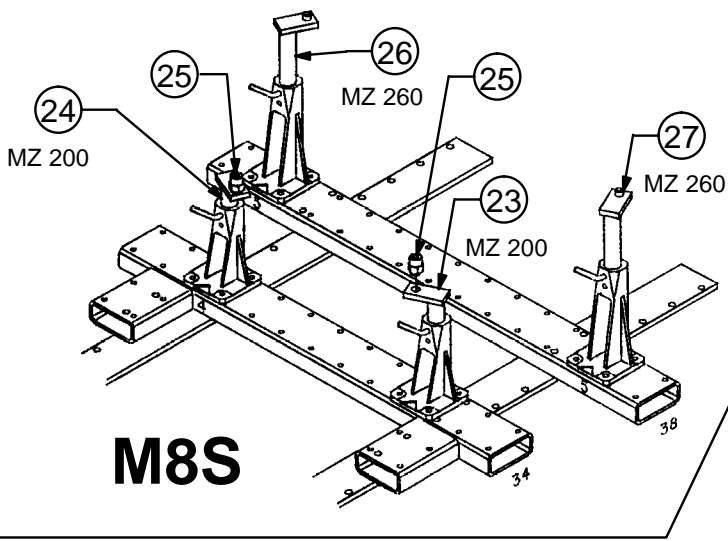
**586.300**

56 Kg    23.04.91    410-D-36A



1 2 3 4 5 6 7 8 9 10 11 12 13 14 15 16 17 18 19 20 21 22 23 24 25 26 27 28 29 30 31 32 33 34 35 36





**NISSAN**

**586.300**

56 Kg 14.02.91 410-D-36B

