

REP.	REFERENCE	PDS	NB	MZ
1	582.701	2,2	1	140
2	582.702	0,02	2	
5	582.705	3,3	1	260/080
6	582.706	3,3	1	260/080
7	582.707	3,4	1	601
8	582.708	3,4	1	602
9	582.709	1,0	2	
10	582.710	2,5	1	260
11	582.711	2,5	1	260
12	582.712	0,2	2	
13	582.713	2,4	1	080
14	582.714	2,4	1	080
15	582.715	1,0	2	
16	582.716	1,7	1	080
17	582.717	1,7	1	080
18	582.718	2,8	1	140
19	582.719	2,8	1	140
20	582.720	1,0	1	
21	582.721	1,0	1	
22	582.722	3,0	1	200
23	582.723	3,0	1	200
24	582.724	3,5	1	260
25	582.725	3,5	1	260
26	582.726	0,5	2	
27	582.727	2,5	1	200
28	582.728	2,5	1	200
34	582.734	3,8	1	602
35	582.735	3,8	1	601
36	582.736	1,6	2	
37	582.737 V.06	1,0	2	
		0,1	2	

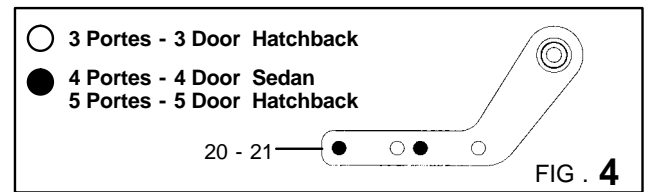
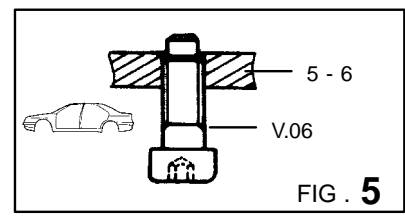
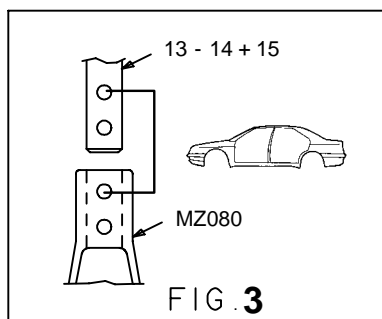
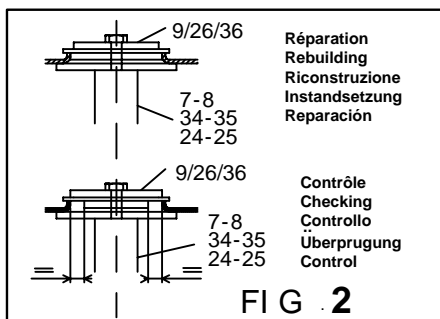
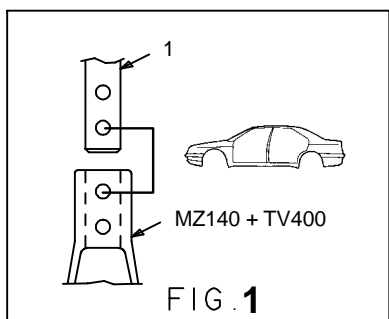
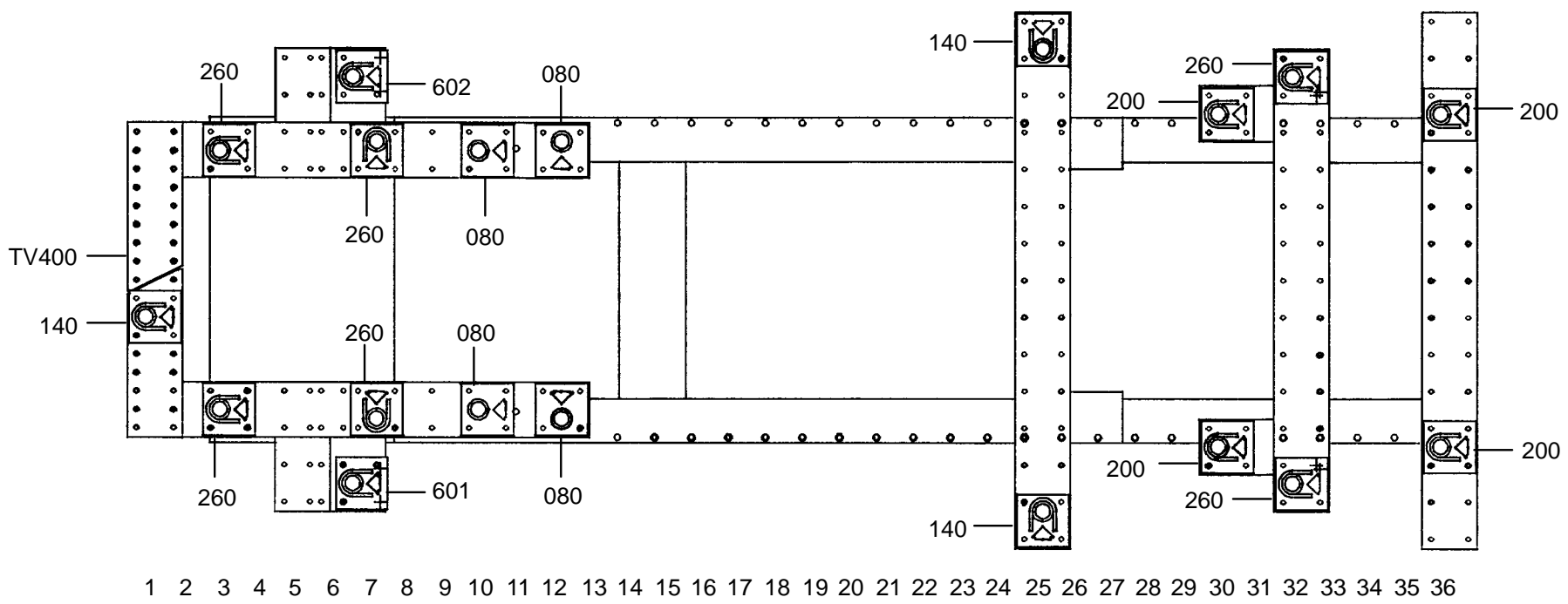
M10.125x30	4
M12.125x20	2
M12.125x70	2
M12.125x80	4
M12x25	4
M12x30	2
M12x40	2

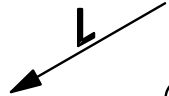
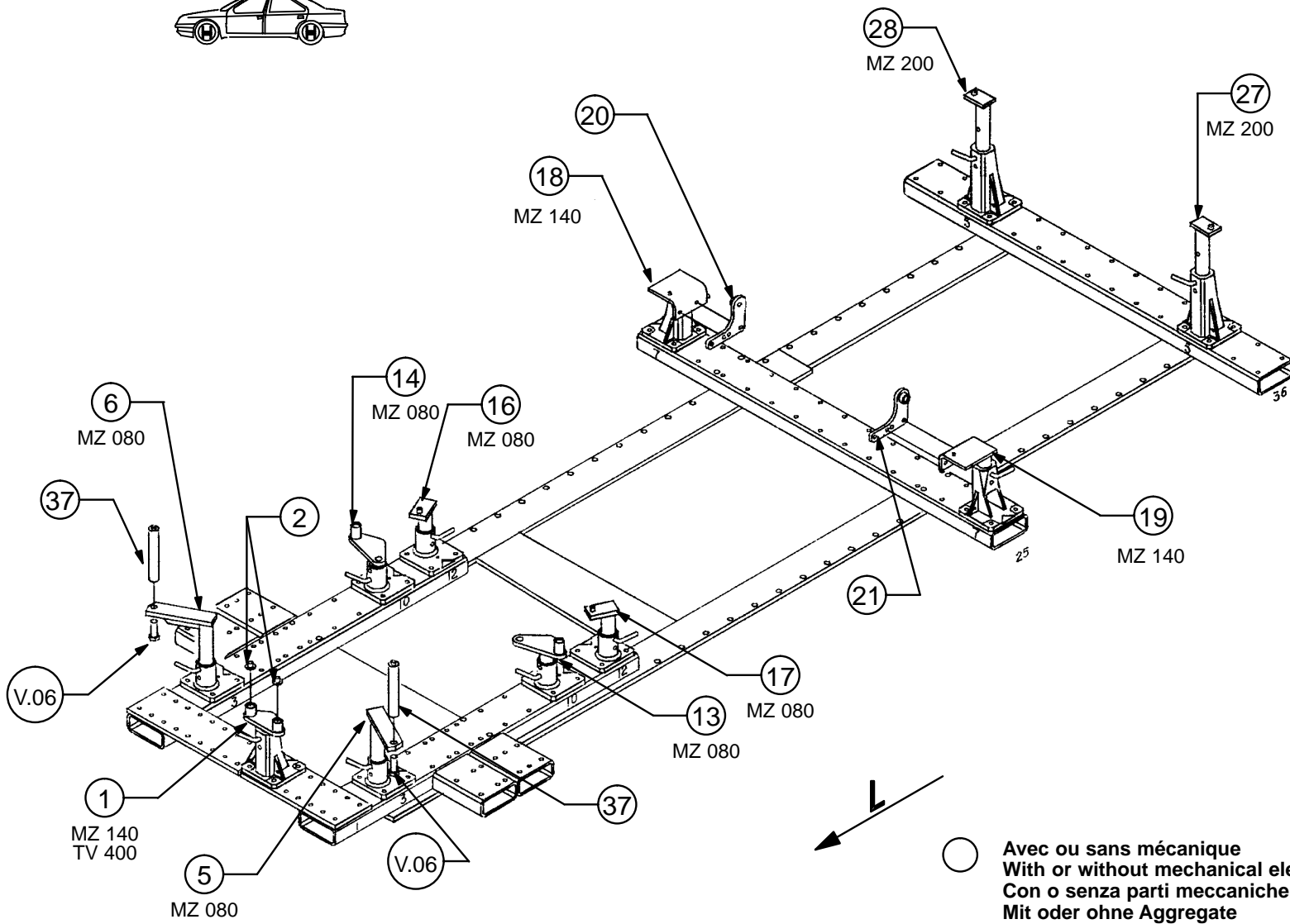
M12	2
-----	---

MAZDA

582.300

76 Kg 27.10.89 419-D-16A





○ Avec ou sans mécanique
With or without mechanical elements
Con o senza parti meccaniche
Mit oder ohne Aggregate
Con ó sin mecanica desmontada

REP.	REFERENCE	PDS	NB	MZ
1	582.701	2,2	1	140
2	582.702	0,02	2	
5	582.705	3,3	1	260/080
6	582.706	3,3	1	260/080
7	582.707	3,4	1	601
8	582.708	3,4	1	602
9	582.709	1,0	2	
10	582.710	2,5	1	260
11	582.711	2,5	1	260
12	582.712	0,2	2	
13	582.713	2,4	1	080
14	582.714	2,4	1	080
15	582.715	1,0	2	
16	582.716	1,7	1	080
17	582.717	1,7	1	080
18	582.718	2,8	1	140
19	582.719	2,8	1	140
20	582.720	1,0	1	
21	582.721	1,0	1	
22	582.722	3,0	1	200
23	582.723	3,0	1	200
24	582.724	3,5	1	260
25	582.725	3,5	1	260
26	582.726	0,5	2	
27	582.727	2,5	1	200
28	582.728	2,5	1	200
34	582.734	3,8	1	602
35	582.735	3,8	1	601
36	582.736	1,6	2	
37	582.737	1,0	2	
	V.06	0,1	2	

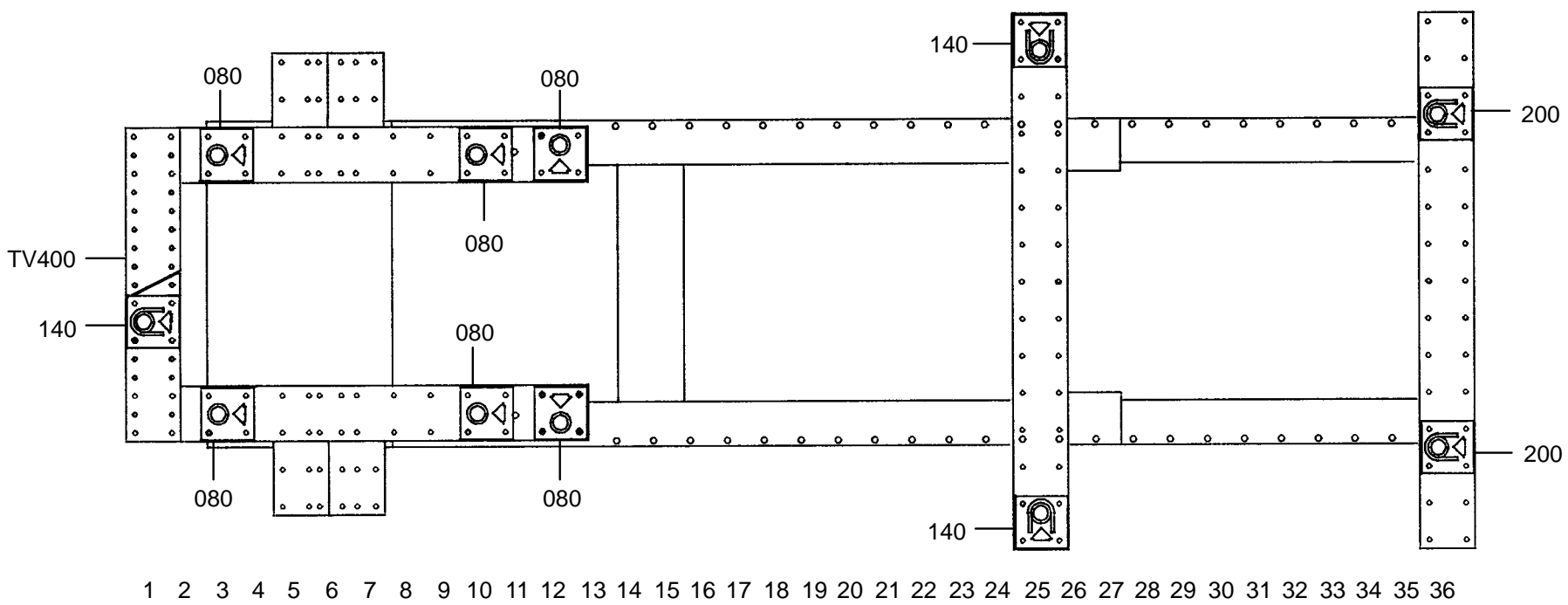
	M10.125x30	4
	M12.125x20	2
	M12.125x70	2
	M12.125x80	4
	M12x25	4
	M12x30	2
	M12x40	2

	M12	2
--	-----	---

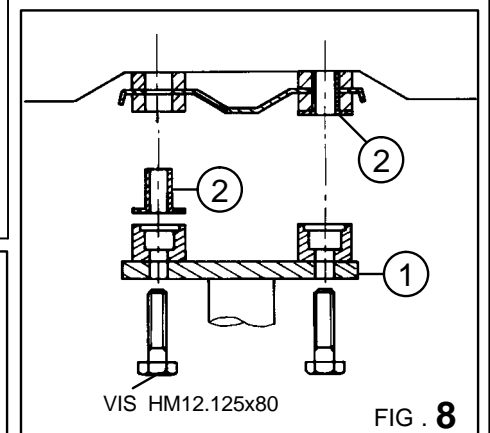
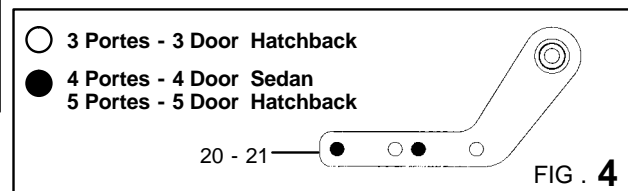
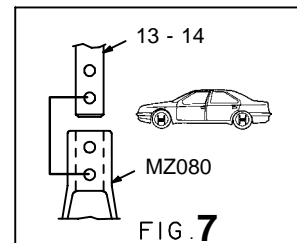
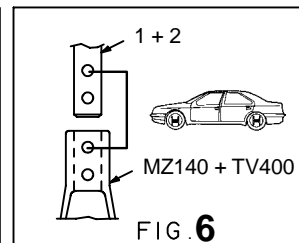
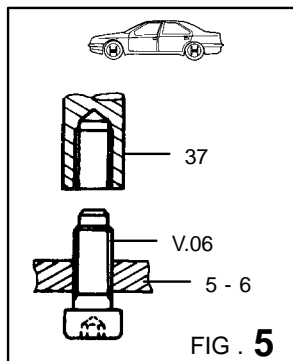
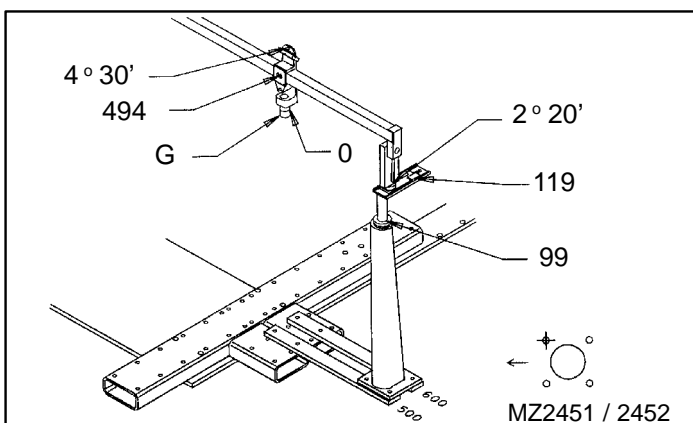
MAZDA

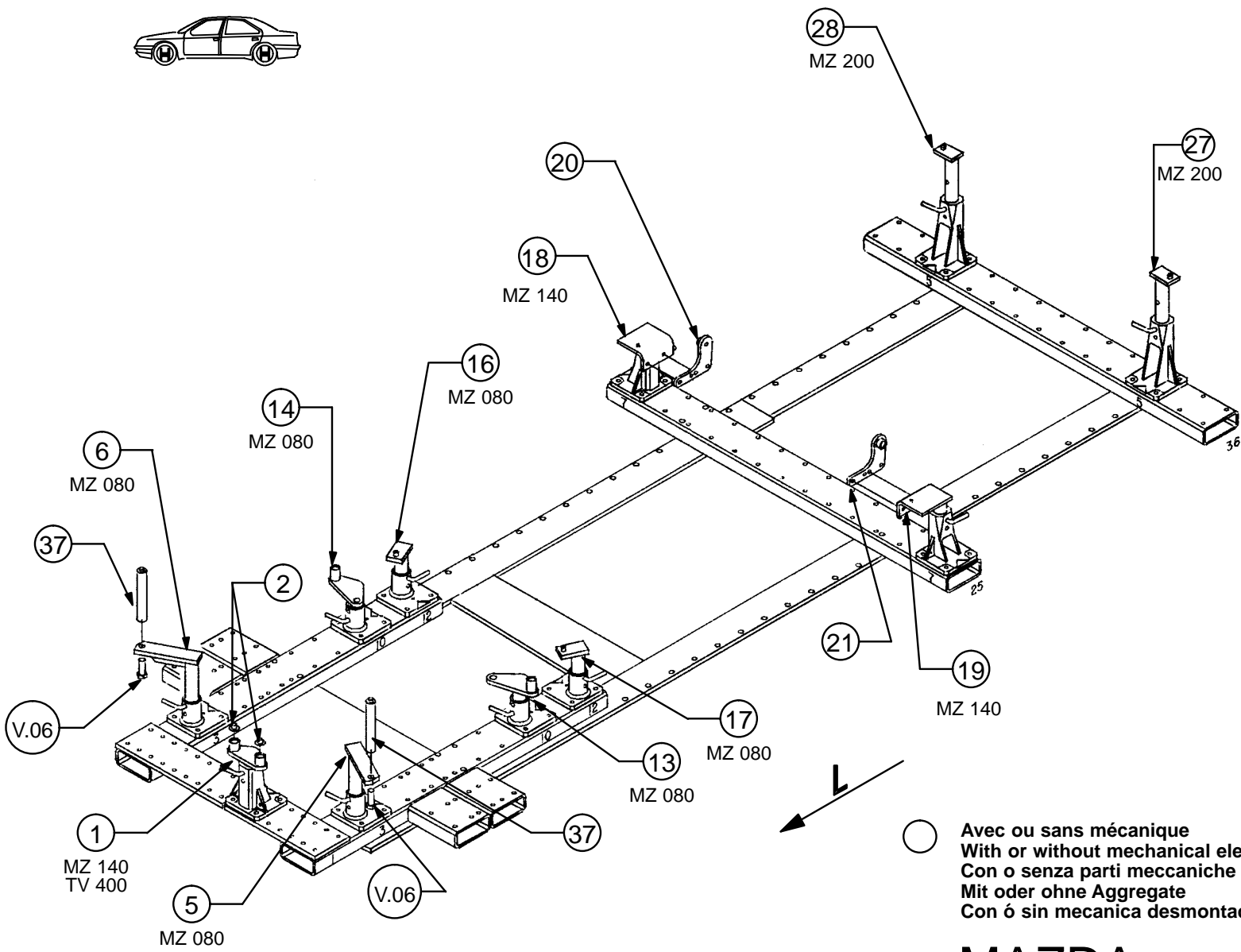
582.300

76 Kg | 27.10.89 | 419-D-16B



1 2 3 4 5 6 7 8 9 10 11 12 13 14 15 16 17 18 19 20 21 22 23 24 25 26 27 28 29 30 31 32 33 34 35 36





○ Avec ou sans mécanique
With or without mechanical elements
Con o senza parti meccaniche
Mit oder ohne Aggregate
Con ó sin mecánica desmontada

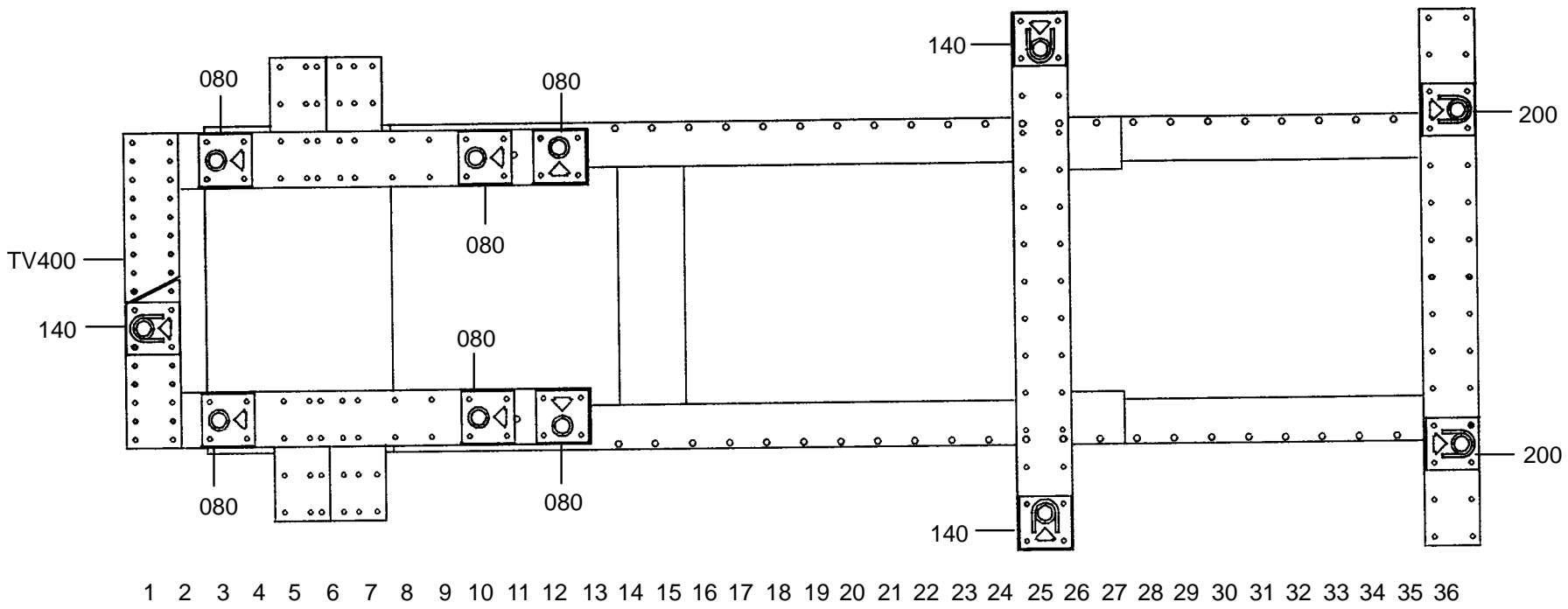
REP.	REFERENCE	PDS	NB	MZ
1	582.701	2,2	1	140
2	582.702	0,02	2	
5	582.705	3,3	1	260/080
6	582.706	3,3	1	260/080
7	582.707	3,4	1	601
8	582.708	3,4	1	602
9	582.709	1,0	2	
10	582.710	2,5	1	260
11	582.711	2,5	1	260
12	582.712	0,2	2	
13	582.713	2,4	1	080
14	582.714	2,4	1	080
15	582.715	1,0	2	
16	582.716	1,7	1	080
17	582.717	1,7	1	080
18	582.718	2,8	1	140
19	582.719	2,8	1	140
20	582.720	1,0	1	
21	582.721	1,0	1	
22	582.722	3,0	1	200
23	582.723	3,0	1	200
24	582.724	3,5	1	260
25	582.725	3,5	1	260
26	582.726	0,5	2	
27	582.727	2,5	1	200
28	582.728	2,5	1	200
34	582.734	3,8	1	602
35	582.735	3,8	1	601
36	582.736	1,6	2	
37	582.737	1,0	2	
	V.06	0,1	2	

	M10.125x30	4
	M12.125x20	2
	M12.125x70	2
	M12.125x80	4
	M12x25	4
	M12x30	2
	M12	2

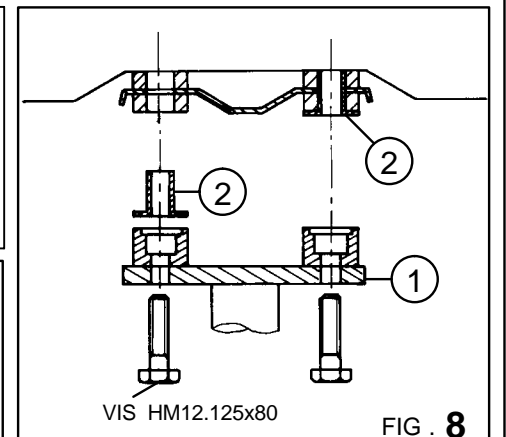
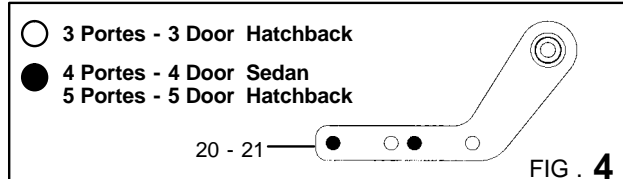
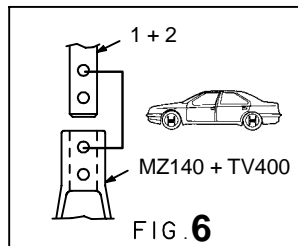
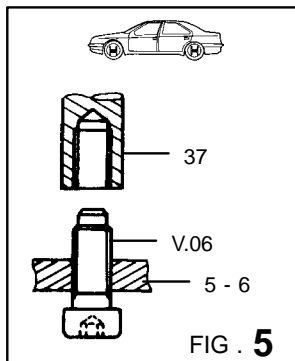
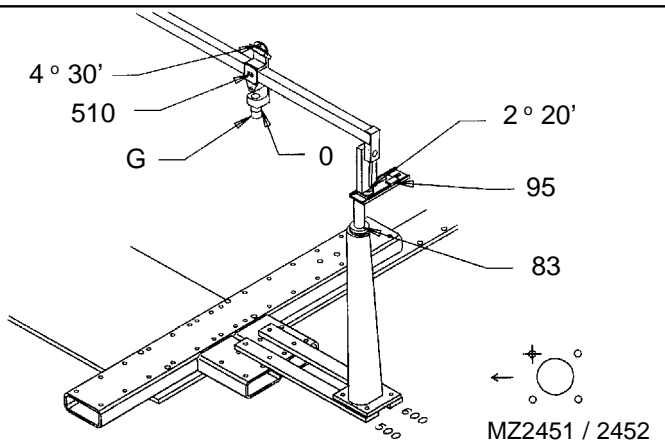
MAZDA

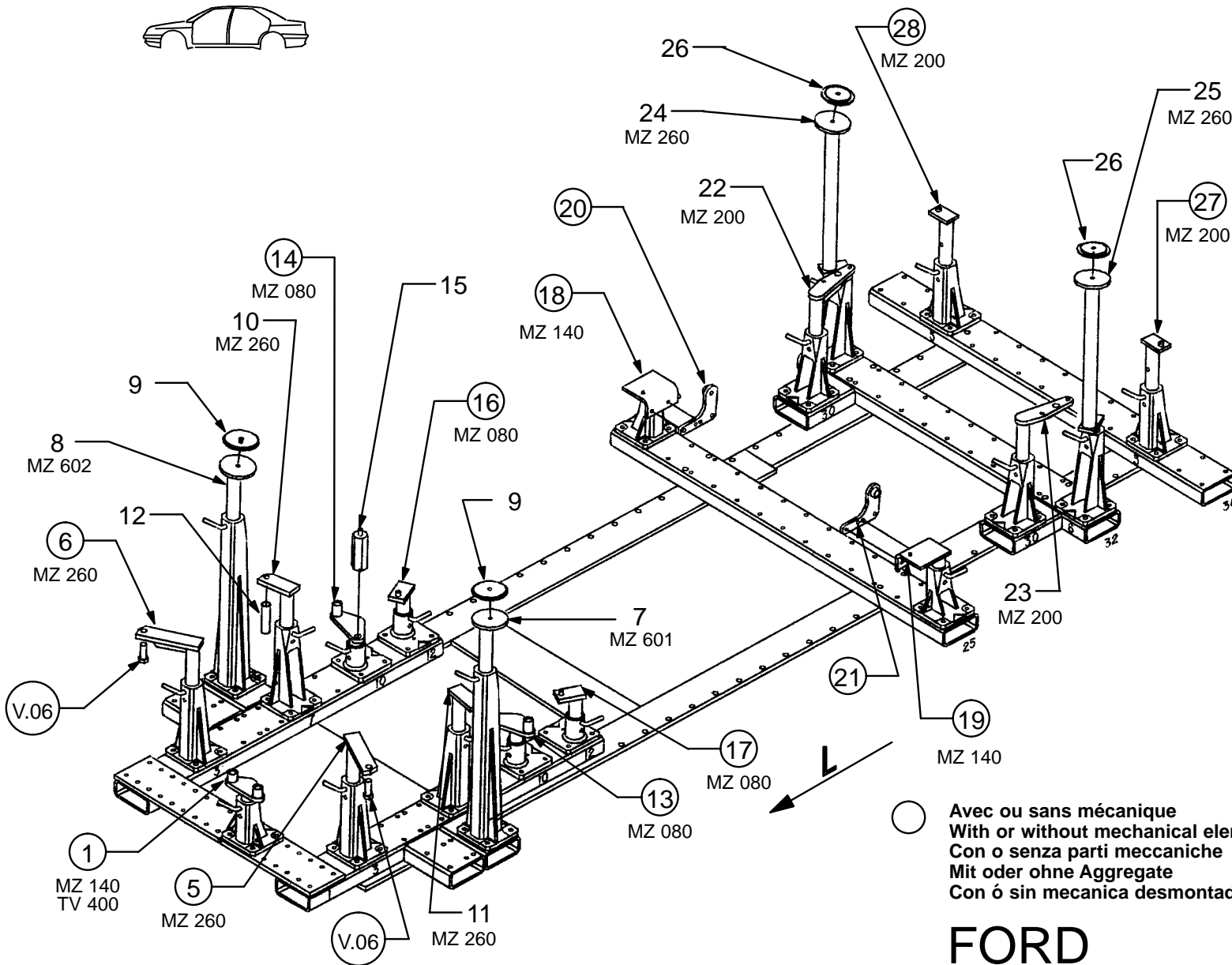
582.300

76 Kg 27.10.89 419-D-16D

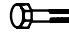



1 2 3 4 5 6 7 8 9 10 11 12 13 14 15 16 17 18 19 20 21 22 23 24 25 26 27 28 29 30 31 32 33 34 35 36





REP.	REFERENCE	PDS	NB	MZ
1	582.701	2,2	1	140
2	582.702	0,02	2	
5	582.705	3,3	1	260/080
6	582.706	3,3	1	260/080
7	582.707	3,4	1	601
8	582.708	3,4	1	602
9	582.709	1,0	2	
10	582.710	2,5	1	260
11	582.711	2,5	1	260
12	582.712	0,2	2	
13	582.713	2,4	1	080
14	582.714	2,4	1	080
15	582.715	1,0	2	
16	582.716	1,7	1	080
17	582.717	1,7	1	080
18	582.718	2,8	1	140
19	582.719	2,8	1	140
20	582.720	1,0	1	
21	582.721	1,0	1	
22	582.722	3,0	1	200
23	582.723	3,0	1	200
24	582.724	3,5	1	260
25	582.725	3,5	1	260
26	582.726	0,5	2	
27	582.727	2,5	1	200
28	582.728	2,5	1	200
34	582.734	3,8	1	602
35	582.735	3,8	1	601
36	582.736	1,6	2	
37	582.737	1,0	2	
	V.06	0,1	2	

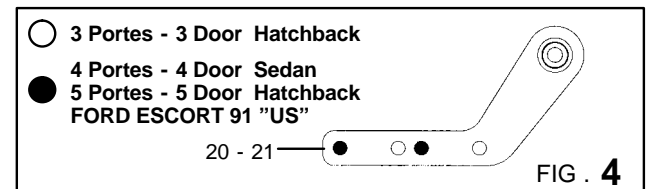
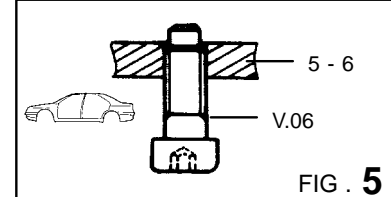
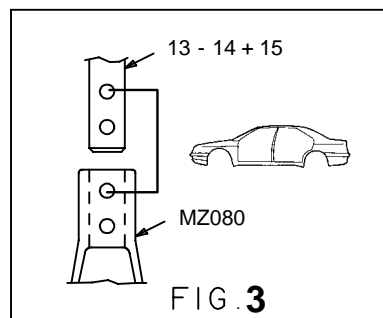
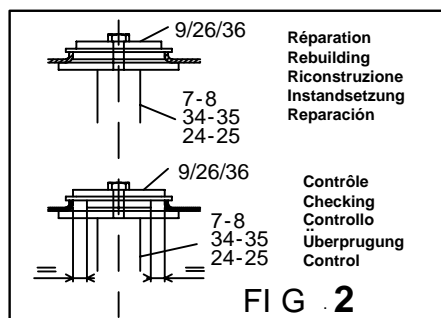
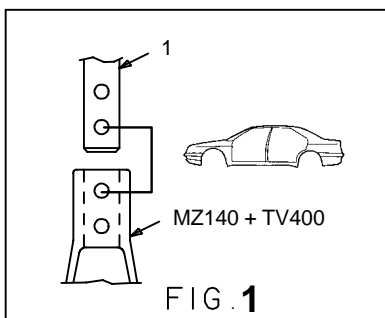
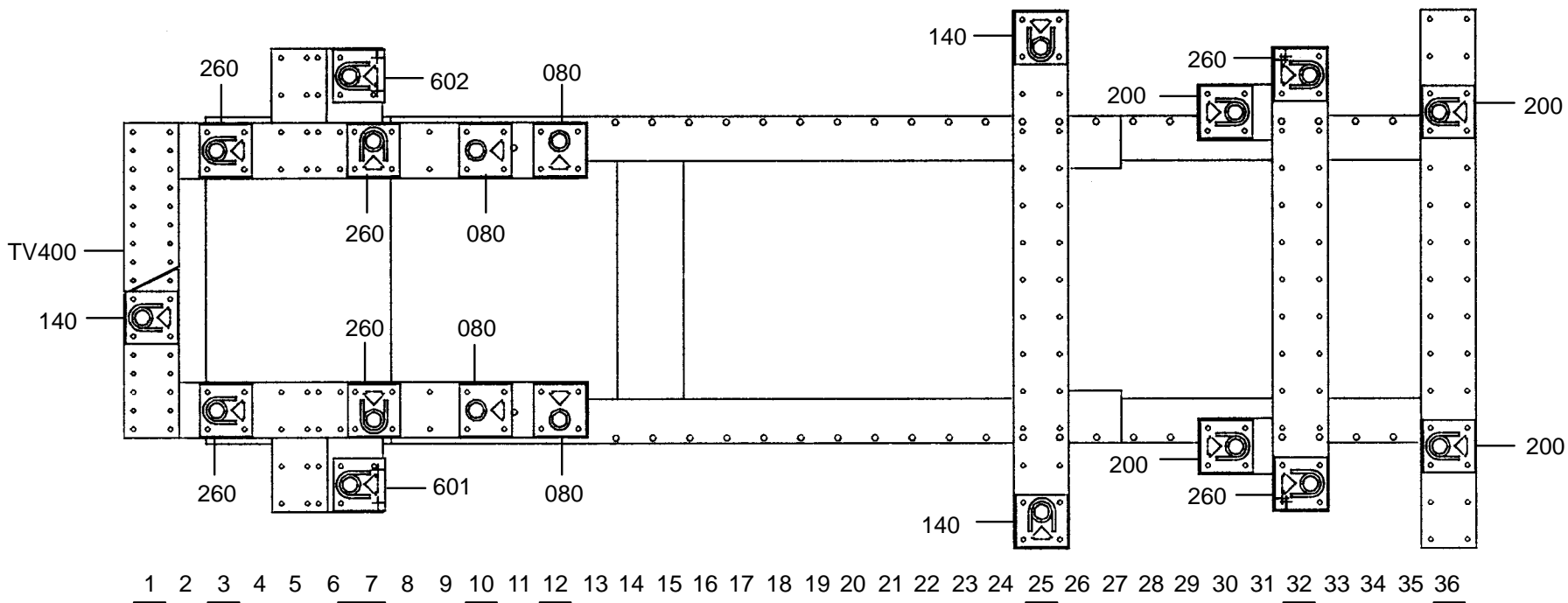
	M10.125x30	4
	M12.125x20	2
	M12.125x70	2
	M12.125x80	4
	M12x25	4
	M12x30	2
	M12x40	2
	M12	2

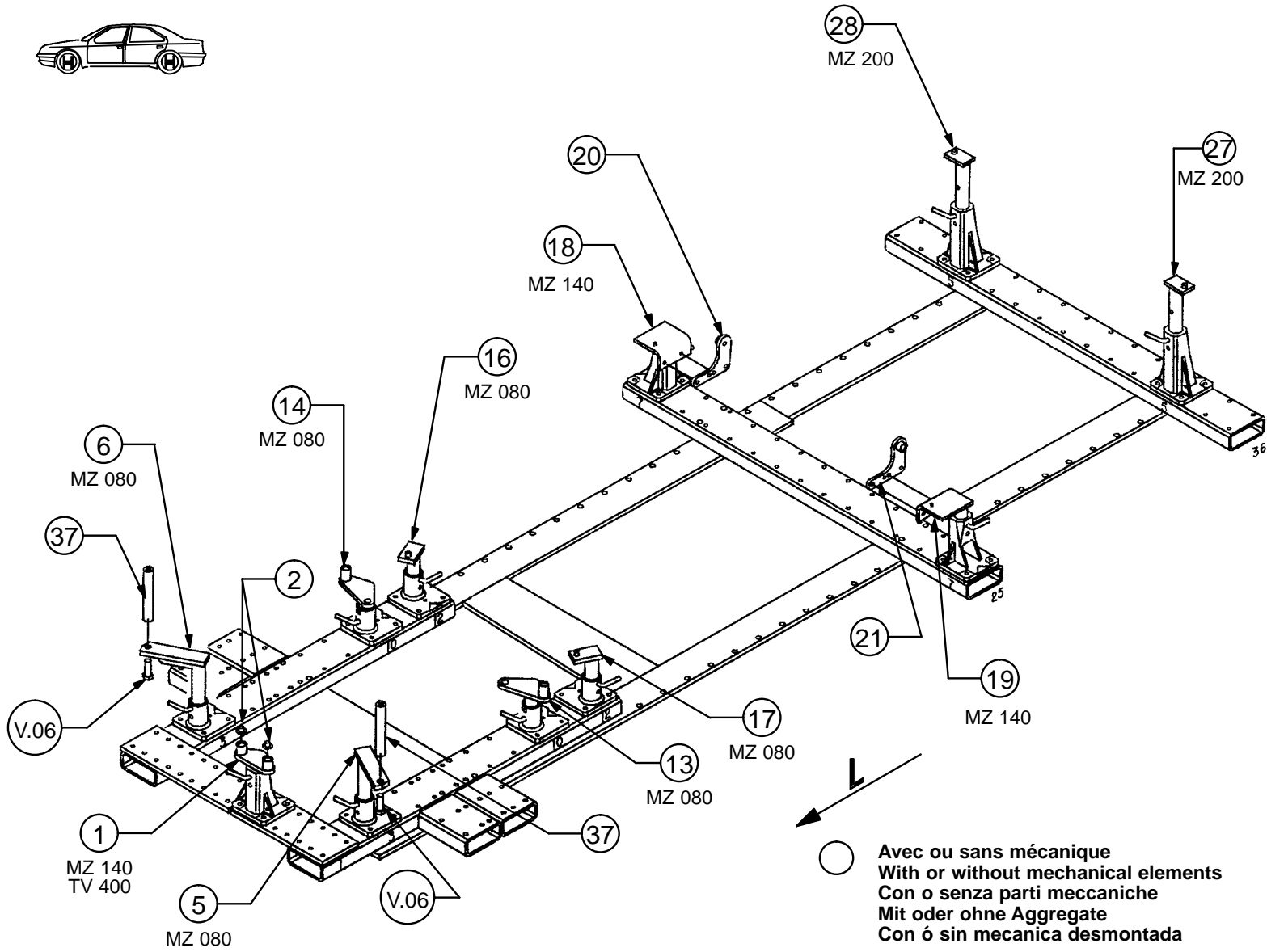
○ Avec ou sans mécanique
With or without mechanical elements
Con o senza parti meccaniche
Mit oder ohne Aggregate
Con ó sin mecanica desmontada

FORD

582.300

76 Kg | 13.11.90 | 419-D-16E





FORD

582.300

76 Kg | 13.11.90 | 419-D-16F

