

REP.	REFERENCE	PDS	NB	MZ
1	564.701	3,0	1	141
2	564.702	3,0	1	142
3	564.703	2,0	1	080
4	564.704	2,0	1	080
5	564.705	1,5	1	
6	564.706	1,5	1	
7	564.707	2,4	1	601
8	564.708	2,4	1	602
9	564.709	2,1	1	080
10	564.710	2,1	1	080
11	564.711	0,5	2	
12	564.712	2,4	1	140
13	564.713	1,7	1	080
14	564.714	1,7	1	080
15	564.715	2,0	1	140
16	564.716	2,0	1	140
17	564.717	1,2	1	
18	564.718	1,2	1	
21	564.721	1,2	1	200
22	564.722	1,2	1	200
25	564.725	0,5	2	
26	564.726	3,3	1	260
27	564.727	3,3	1	260
28	564.728	2,3	1	
29	564.729	2,3	1	
30	564.730	0,4	2	
31	564.731	2,1	1	140/080
32	564.732	2,1	1	140/080
33	564.733	0,1	2	
34	564.734	0,2	2	
35	564.735	2,7	1	260
36	564.736	2,7	1	260
37	564.737	0,4	2	
38	564.738	1,3	2	
	V.32	0,1	2	
	B.70	0,2	2	

M 8x20	8
M 8x40	4
M 8x50	8
M 10x50	2
M 10x60	2
M 10x65	4
M 10x100	4
M 12x20	6
M 12x30	4
M 12.150x25	4
M 12.150x120	2
M 12.150x140	2
M 14.150x60	2
M 14.150x90	2

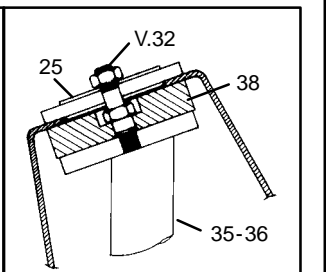
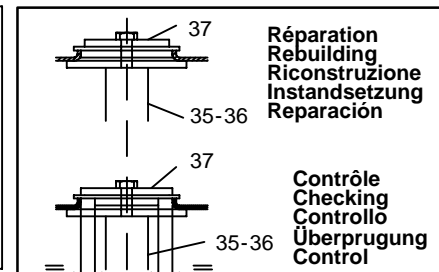
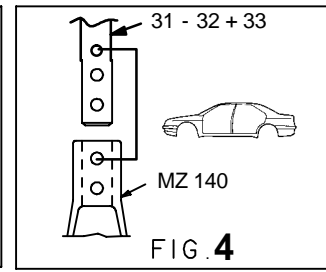
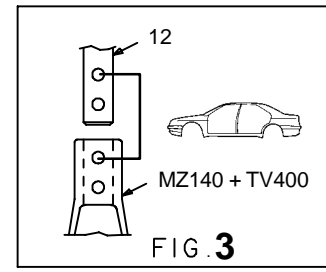
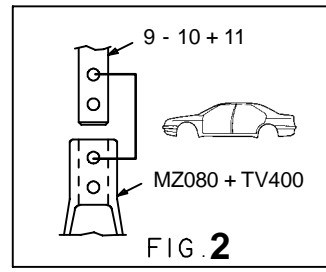
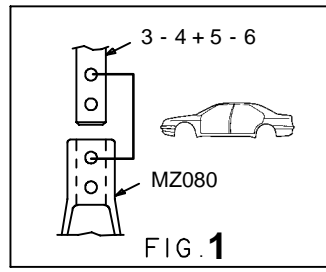
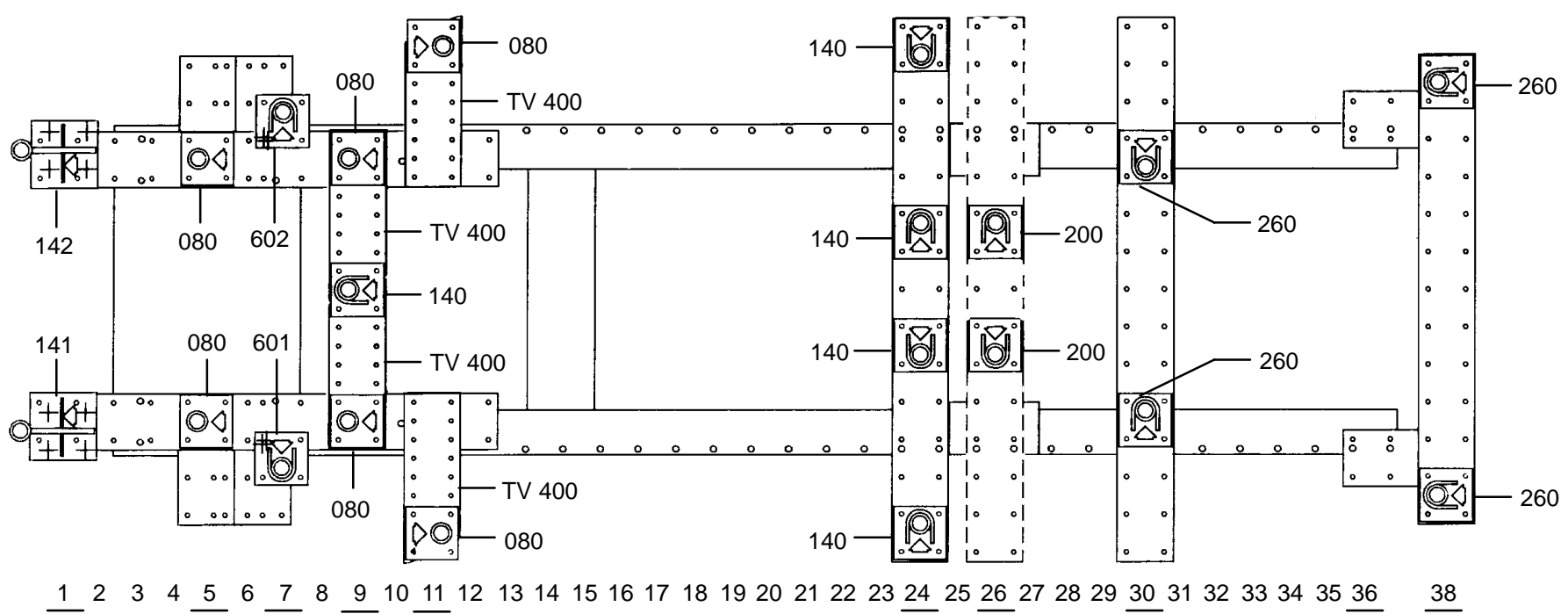
LL 10	4
M 8	8
M 12	2

Avec ou sans mécanique
With or without mechanical elements
Con o senza parti meccaniche
Mit oder ohne Aggregate
Con ó sin mecanica desmontada

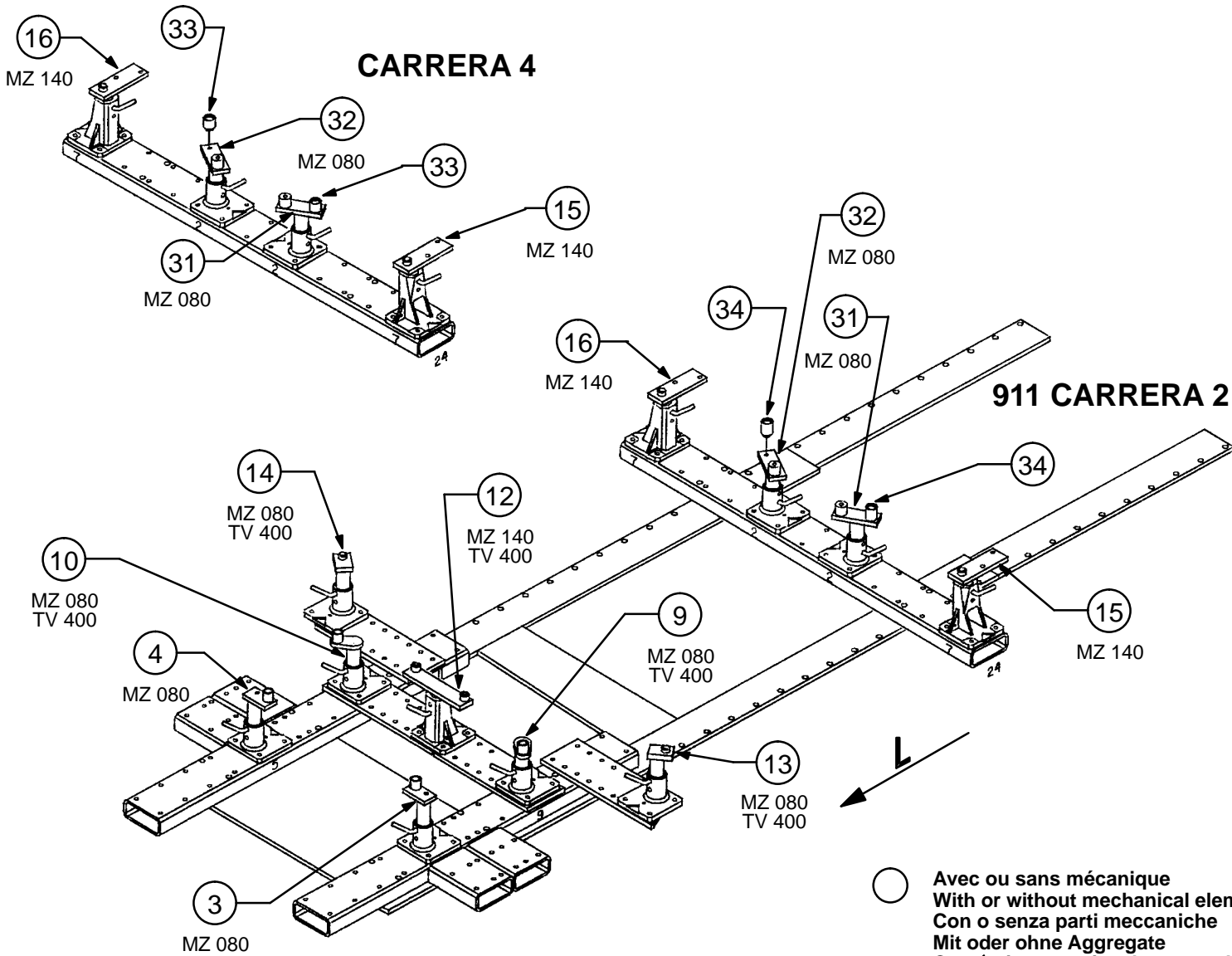
PORSCHE

564.320

69 Kg	30.01.97	425-D-4H
-------	----------	----------



MOD. 91 → MOD. 90



○ Avec ou sans mécanique
 With or without mechanical elements
 Con o senza parti meccaniche
 Mit oder ohne Aggregate
 Con ó sin mecanica desmontada

PORSCHE

564.320

69 Kg | 30.01.97 | 425-D-4J

