

○ Avec ou sans mécanique
 Con o senza parti meccaniche
 Mit oder ohne Aggregate
 With or without mechanical elements
 Con ó sin mecanica desmontada

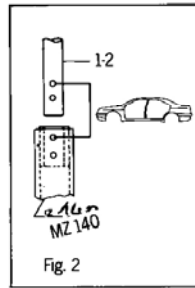
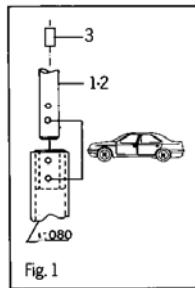
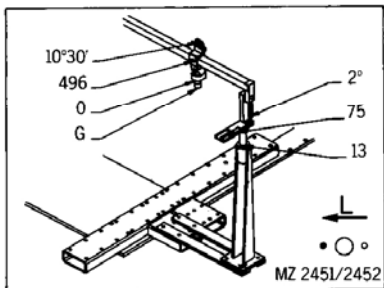
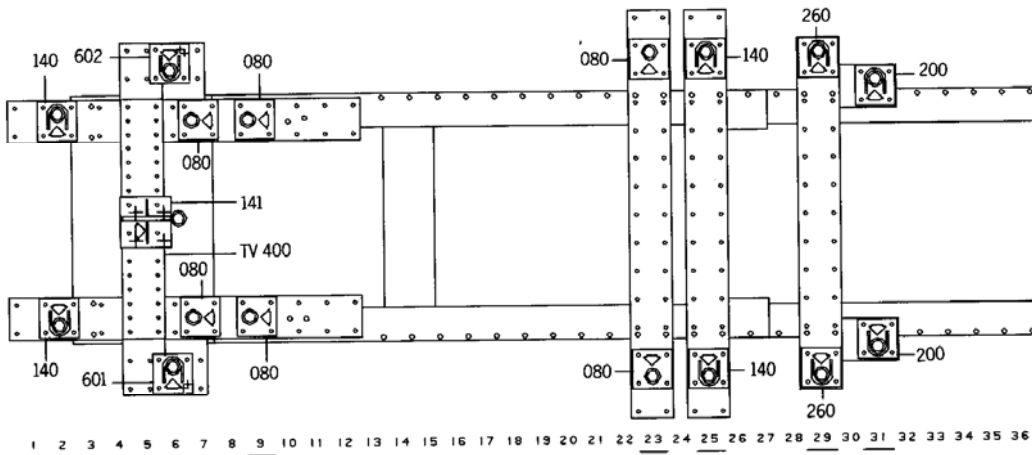
FORD-MAZDA

REP.	REFERENCE	PDS.	NB	MZ
1	528.701	3,2	1	140
2	528.702	3,2	1	140
3	528.703	0,2	2	
4	528.704	2,8	1	141
5	528.705	1,8	1	
6	528.706	2,1	1	602
7	528.707	2,1	1	601
8	528.708	1,2	2	
9	528.709	1,8	1	080
10	528.710	1,8	1	080
11	528.711	1,6	1	080
12	528.712	1,6	1	080
13	528.713	1,7	1	080
14	528.714	1,7	1	080
15	528.715	2,2	1	140
16	528.716	2,2	1	140
17	528.717	2,8	1	260
18	528.718	2,8	1	260
19	528.719	1,6	1	200
20	528.720	1,6	1	200

Ⓜ	MU 12		2
	MU 16		2
	M 10.125 x 60		4
	M 10.125 x 40		4
	M 10 x 40		2
	M 12 x 25		2
	M 12 x 60		2
	M 16 x 25		2

528.300

50 kg 26.05.88 412 · D · 13 A

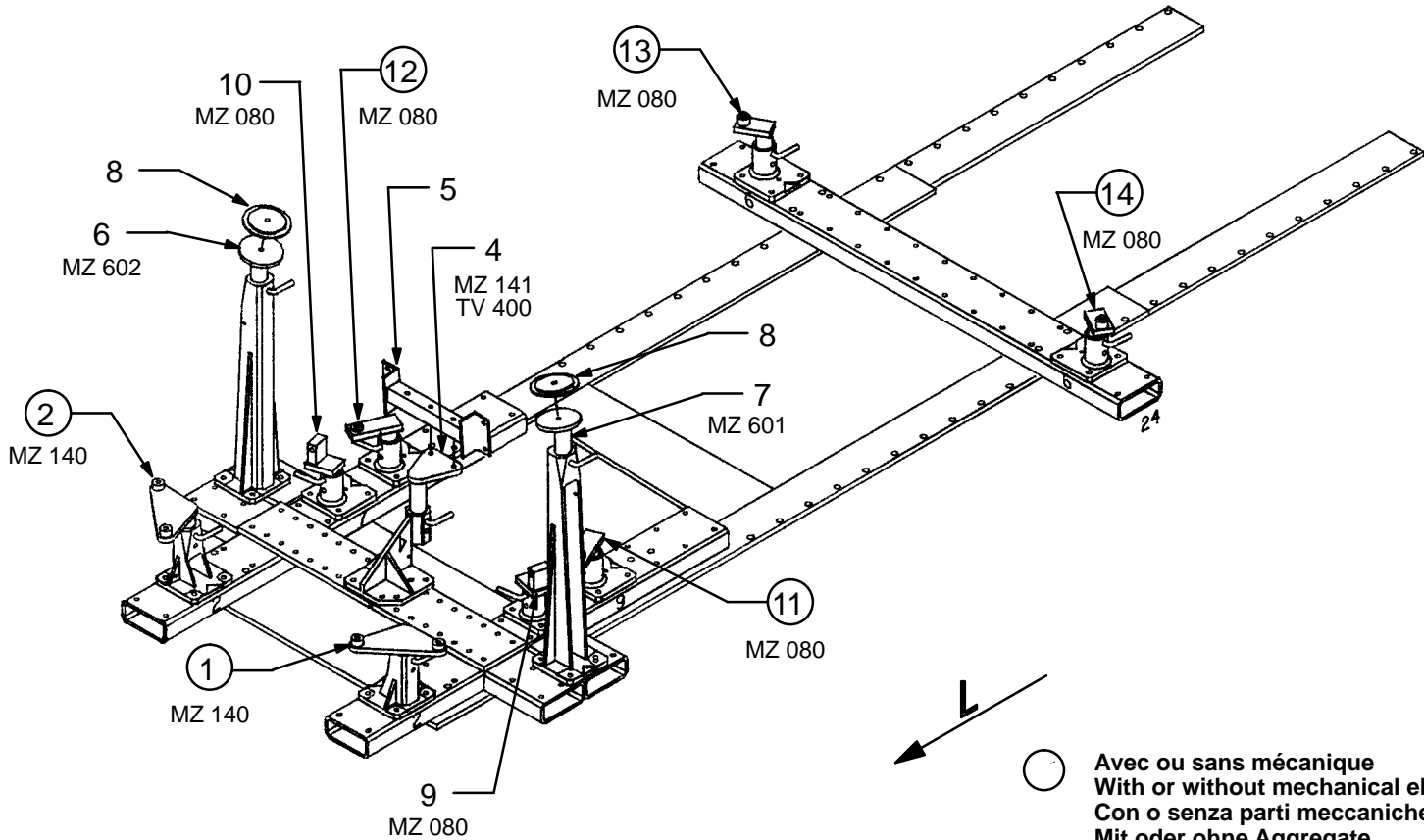


Réparation
Rebuilding
Instandsetzung
Riconstruzione
Reparación

Contrôle
Checking
Überprüfung
Controllo
Control

Fig. 3

CHOC AVANT
FRONT CRASH
FRONTREPARATUR
URTO ANTERIORE
CHOQUE DELANTERO



REP.	REFERENCE	PDS	NB	MZ
1	528.701	3,2	1	140
2	528.702	3,2	1	140
3	528.703	0,2	2	
4	528.704	2,8	1	141
5	528.705	1,8	1	
6	528.706	2,1	1	602
7	528.707	2,1	1	601
8	528.708	1,2	2	
9	528.709	1,8	1	080
10	528.710	1,8	1	080
11	528.711	1,6	1	080
12	528.712	1,6	1	080
13	528.713	1,7	1	080
14	528.714	1,7	1	080
15	528.715	2,2	1	140
16	528.716	2,2	1	140
17	528.717	2,8	1	260
18	528.718	2,8	1	260
19	528.719	1,6	1	200
20	528.720	1,6	1	200

	M10x40	2
	M10.125x40	4
	M10.125x60	4
	M12x25	2
	M12x60	2
	M16x25	2

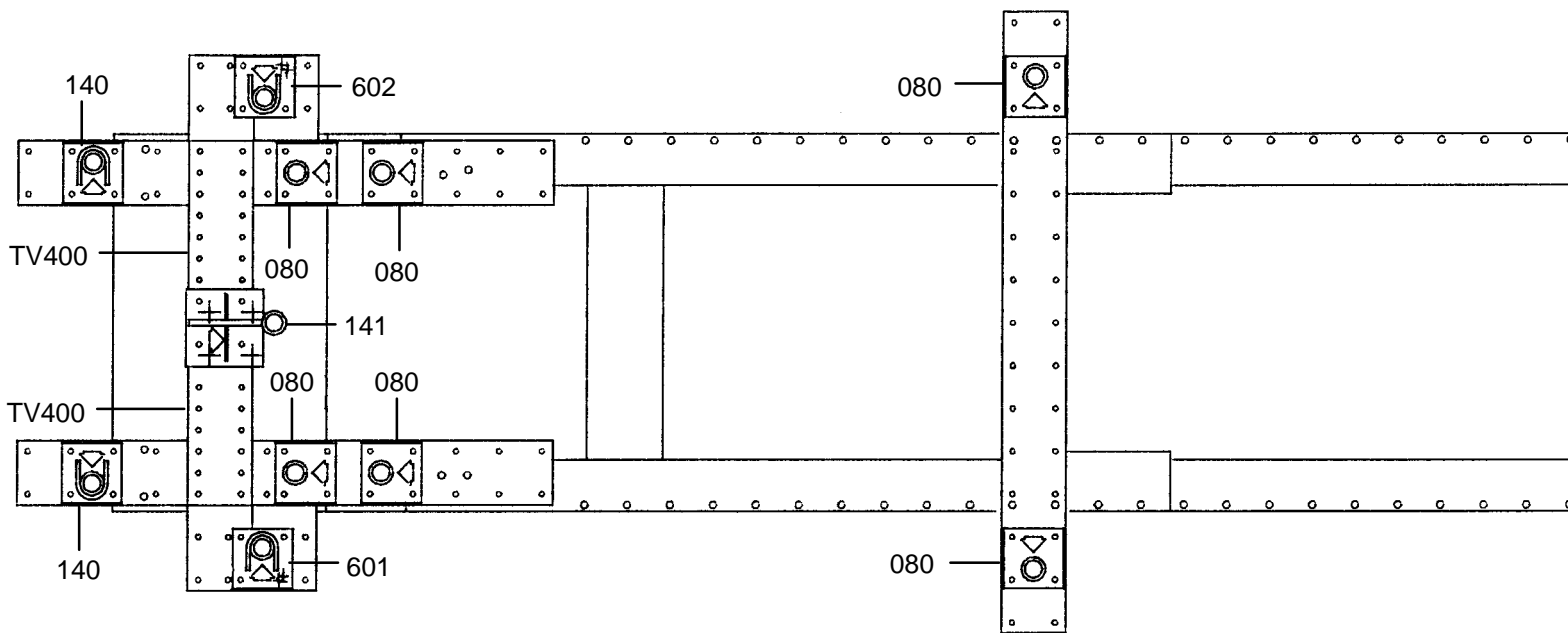
	MU 12	2
	MU 16	2

○ Avec ou sans mécanique
With or without mechanical elements
Con o senza parti meccaniche
Mit oder ohne Aggregate
Con ó sin mecanica desmontada

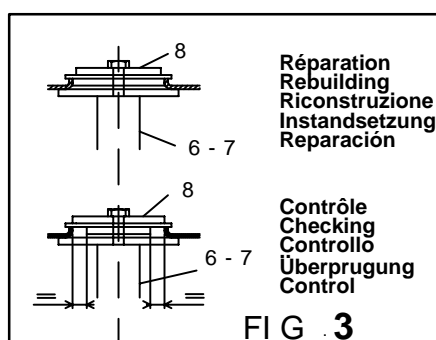
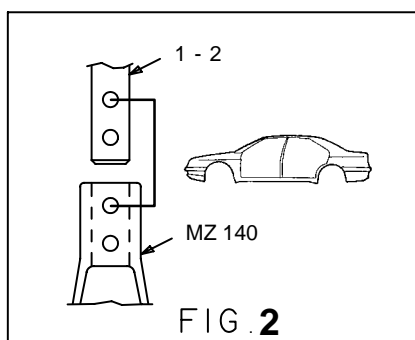
KIA

528.300

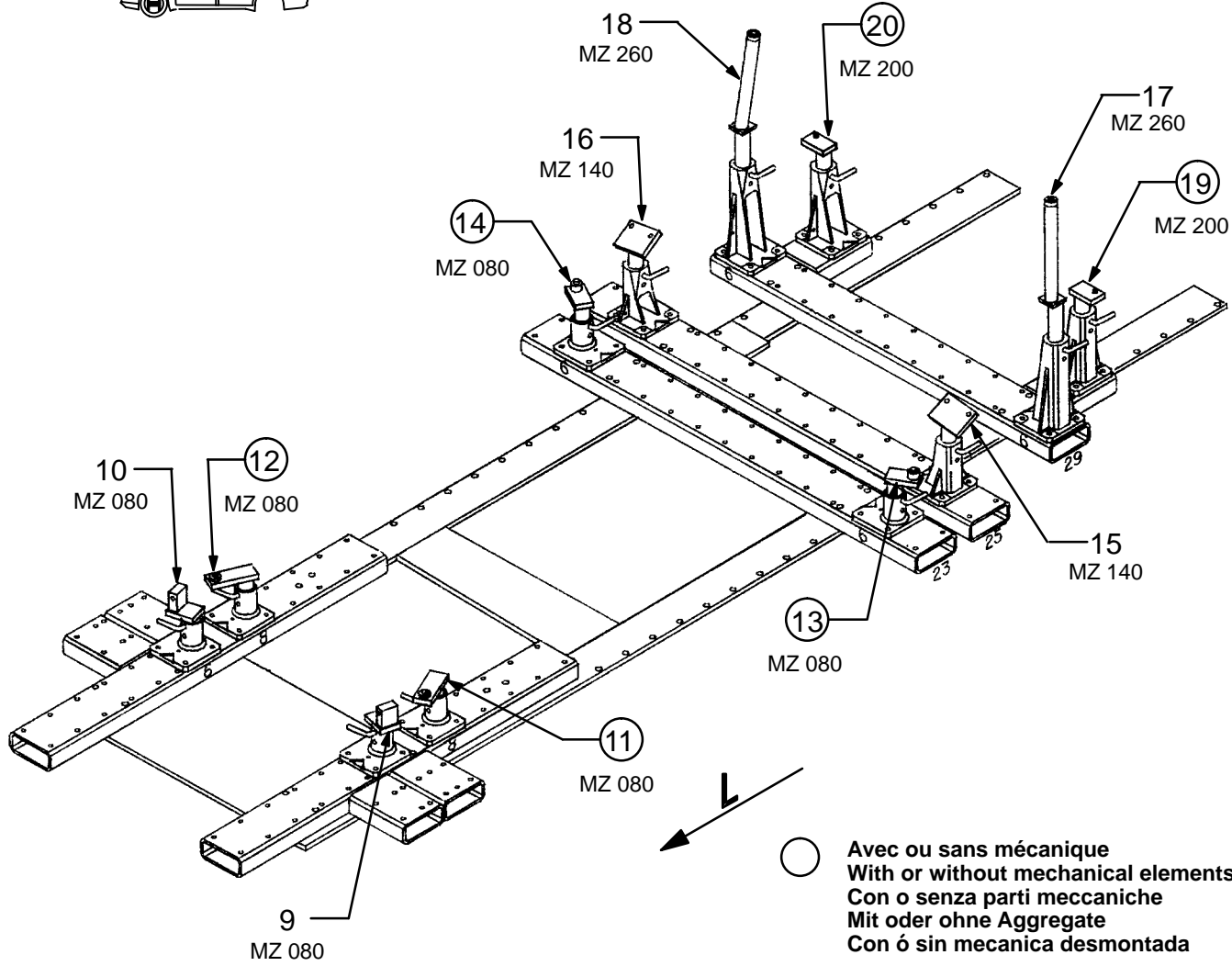
50 Kg 08.04.91 412-D-13B



1 2 3 4 5 6 7 8 9 10 11 12 13 14 15 16 17 18 19 20 21 22 23 24 25 26 27 28 29 30 31 32 33 34 35 36



CHOC ARRIERE
 REAR CRASH
 HECKREPARATUR
 URTO POSTERIORE
 CHOQUE TRASERO



KIA

528.300

50 Kg | 08.04.91 | 412-D-13C

