

REP.	REFERENCE	PDS	NB	MZ
32	503.732	2,3	1	200/260
33	503.733	2,3	1	200/260
34	503.734	1,2	2	
35	503.735	2,8	1	141
36	503.736	2,8	1	142
37	503.737	2,9	1	
38	503.738	2,9	1	
39	503.739	2,1	1	
40	503.740	3,4	1	
	CD.45	3,3	2	

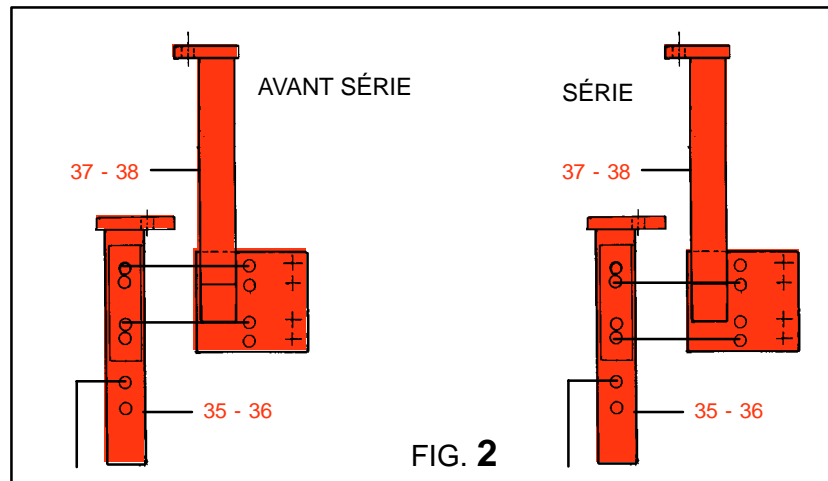
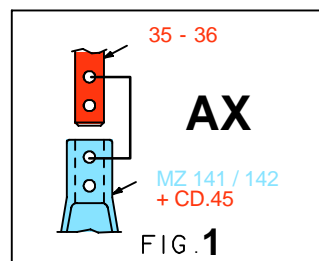
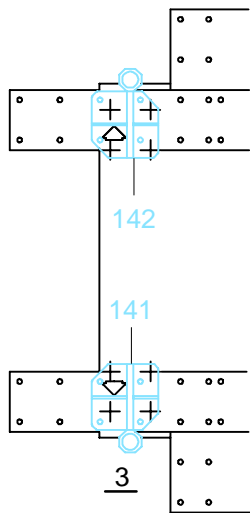
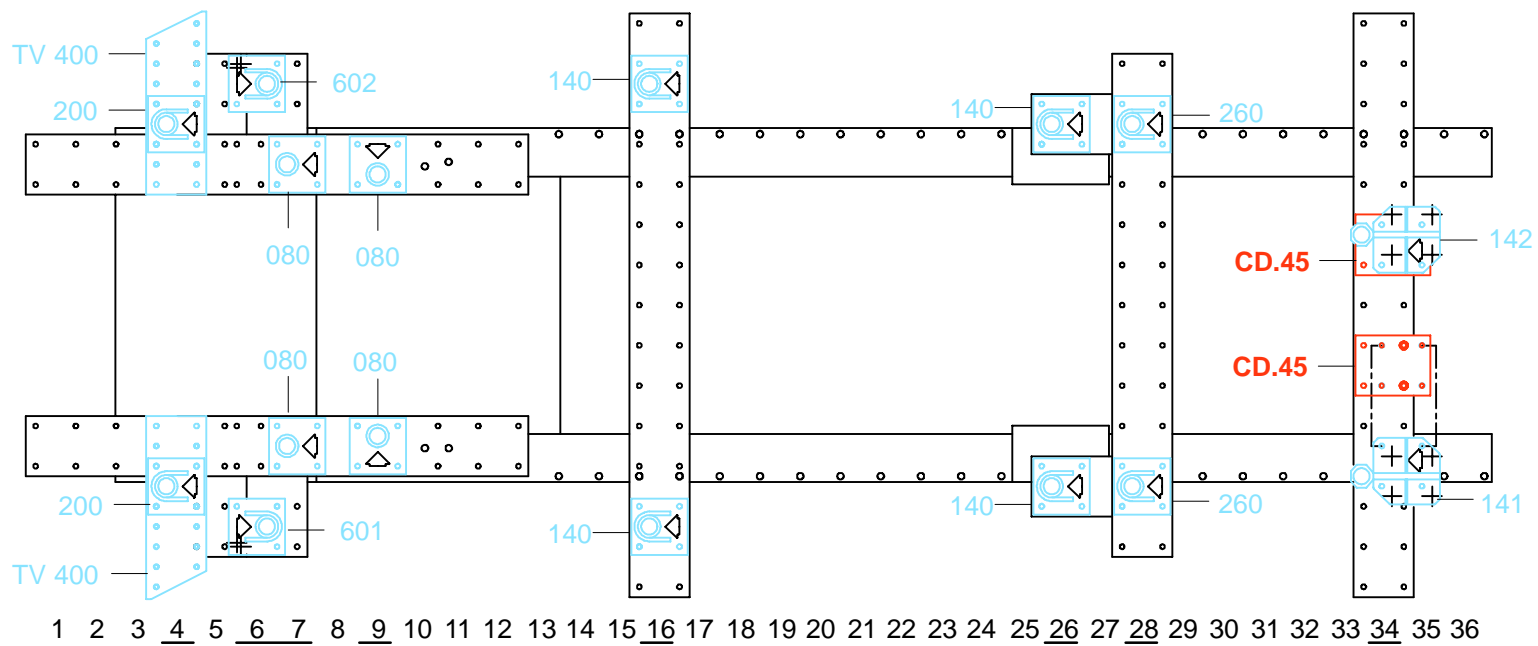
	CHc TB 12x25	4
	M 10x25	2
	M 10x30	4
	M 12x25	12
	M 12x50	2
	M 14x30	2
	M 10	2
	M 12	4
	M 14	4

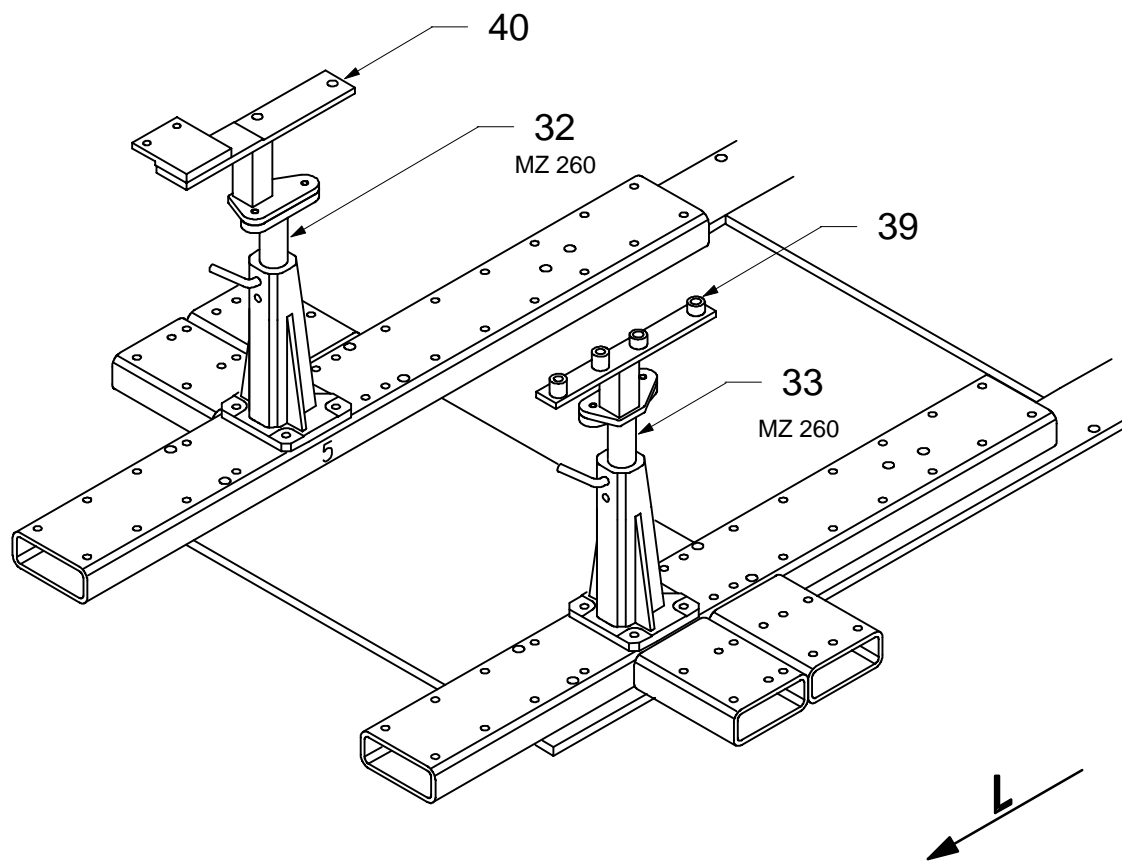
complément au
complementary set to
complemento al
zusatz zu

503.320

503.307

32 Kg 21.11.95 408-D-8K





○ Avec ou sans mécanique
 With or without mechanical elements
 Con o senza parti meccaniche
 Mit oder ohne Aggregate
 Con ó sin mecanica desmontada

CITROEN

complément au
 complementary set to
 complemento al
 zusatz zu **503.320**

503.307

32 Kg	21.11.95	408-D-8L
-------	----------	----------