

○ Avec ou sans mécanique
Con o senza parti meccaniche
Mit oder ohne aggregate
With or without mechanical elements
Con ò sin mecanica desmontada

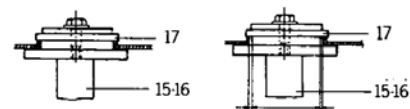
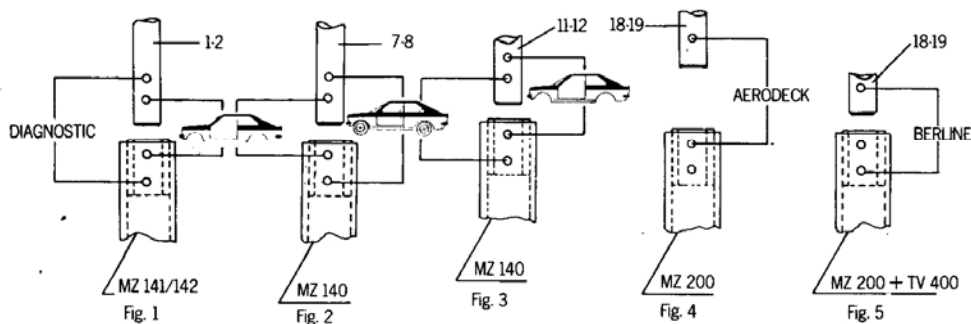
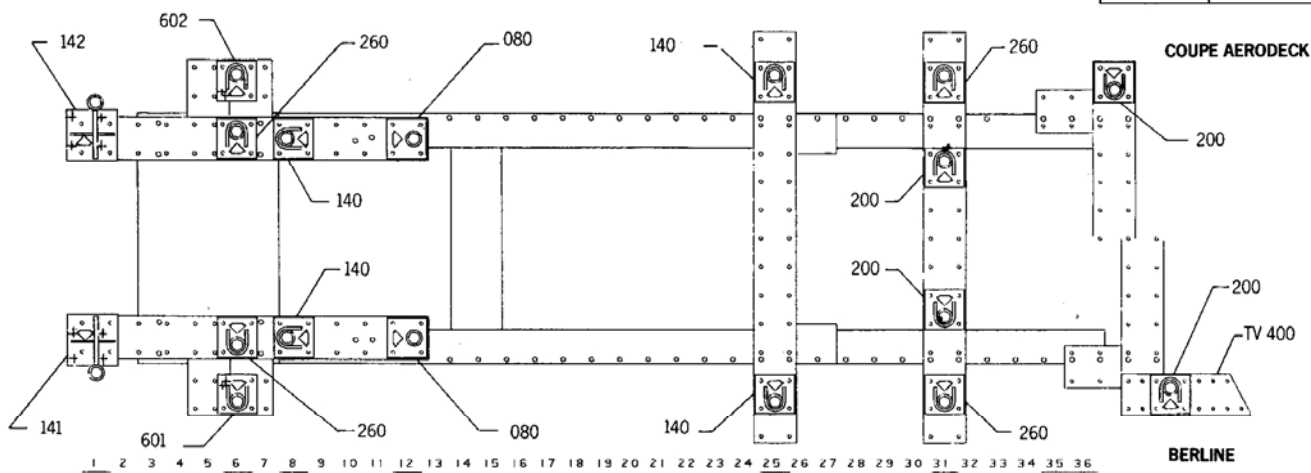
HONDA

REP.	REFERENCE	PDS.	NB	MZ
1	492.701	1,9	1	141
2	492.702	1,9	1	142
3	492.703	2,4	1	260
4	492.704	2,4	1	260
5	492.705	2,5	1	601
6	492.706	2,5	1	602
7	492.707	1,9	1	140
8	492.708	1,9	1	140
9	492.709	1,8	1	080
10	492.710	1,8	1	080
11	492.711	2,3	1	140
12	492.712	2,3	1	140
13	492.713	2,0	1	200
14	492.714	2,0	1	200
15	492.715	3,2	1	260
16	492.716	3,2	1	260
17	492.717	1,0	2	
18	492.718	2,6	1	200
19	492.719	2,6	1	200

BOULON HM 12 x 70	4
VIS HM 12.125 x 180	2
VIS HM 12.125 x 130	2
VIS HM 12.125 x 90	4
VIS HM 12.125 x 60	2
VIS HM 12.125 x 35	2

492.300

45 kg 03.21.86 413 · D · 10 A



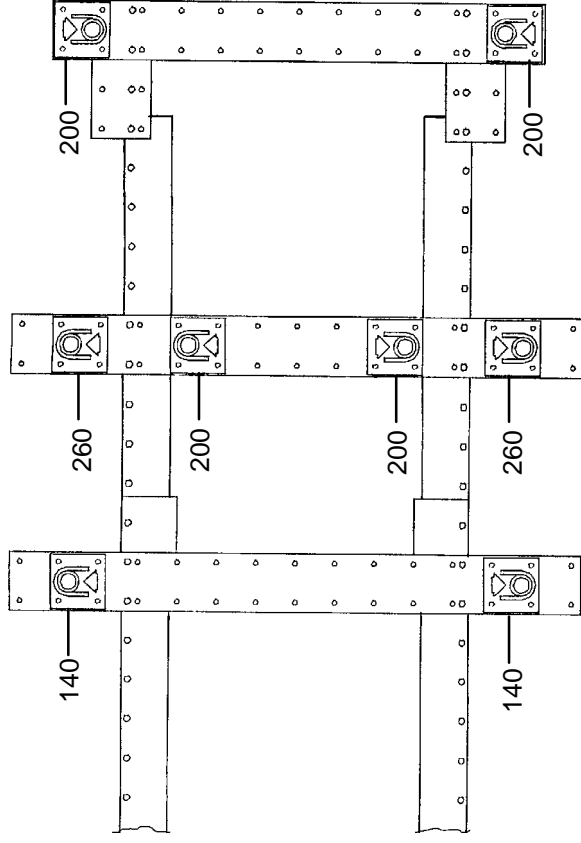
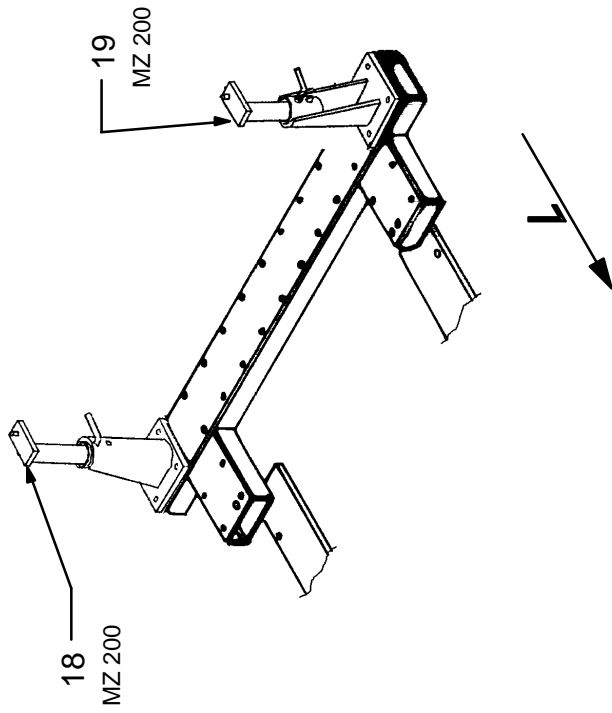
Réparation
Instandsetzung
Rebuilding
Riconstruzione
Reparación

Contrôle
Überprüfung
Checking
Controllo
Control

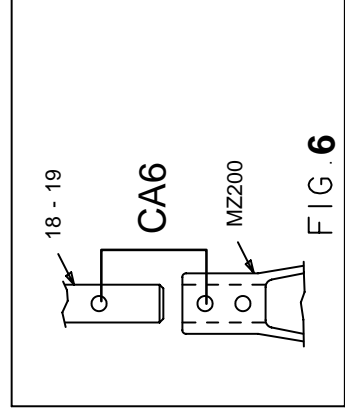


GELETTE®

HONDA CA6 ACCORD VIGOR



19 20 21 22 23 24 25 26 27 28 29 30 31 32 33 34 35 36



Date : 11.05.89

413-D-10B

492.300