

REP.	REFERENCE	PDS	NB	PISTON	MZ
1	2523.5001	1,2	1	P160	142
2	2523.5002	1,2	1	P160	141
3	2523.5003	1,5	2		
4	2523.5004	1,8	1	P220	602
5	2523.5005	1,8	1	P220	601
6	2523.5006	0,2	2		
7	2523.5007	0,8	1	P160/100	260/080
8	2523.5008	0,8	1	P160/100	260/080
9	2523.5009	1,2	2		
10	2523.5010	0,7	1	P160	080
11	2523.5011	0,7	1	P160	080
12	2523.5012	0,05	2		
13	2523.5013	0,6	1	P160	140
14	2523.5014	0,6	1	P160	140
15	2523.5015	1,8	1	P100	140
16	2523.5016	1,8	1	P100	140
17	2523.5017	1,2	1		
18	2523.5018	1,2	1		
20	2523.5020	1,0	1	P100	200
21	2523.5021	0,6	1	P310	260
22	2523.5022	0,6	1	P310	260
A	MZ2500.CR500B	6,5	1		
B	MR.2523.500	0,2	1		

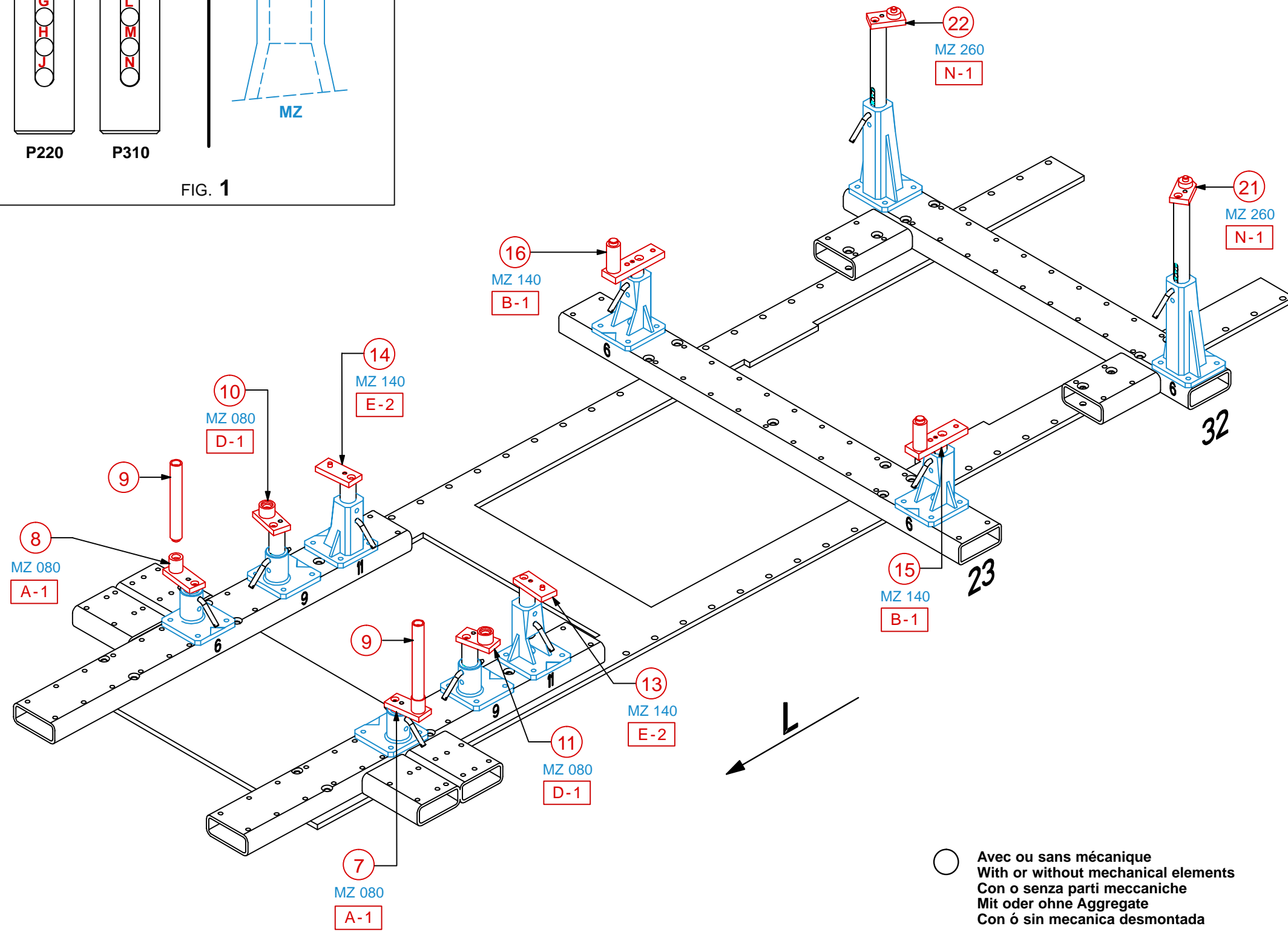
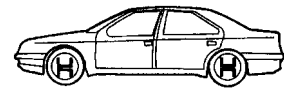
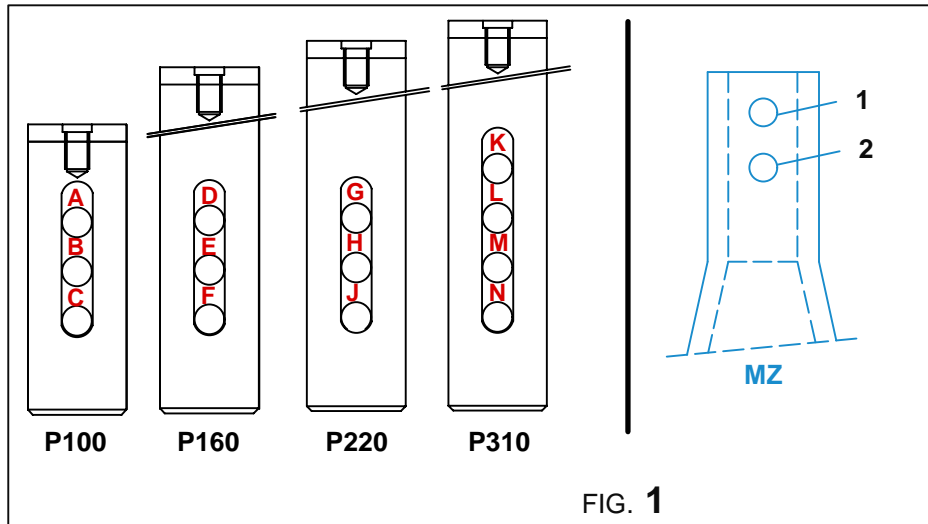
M 8-30	2
M 8-100	2
M 12-30	8
M 12-45	2
M 14-70	2
M 14x1,50-70	2
M 14x1,50-90	2

○ Avec ou sans mécanique
With or without mechanical elements
Con o senza parti meccaniche
Mit oder ohne Aggregate
Con ó sin mecanica desmontada

2523.500

33 Kg	07.10.2008	445-D-13A
2523.500-RVA3-1		00



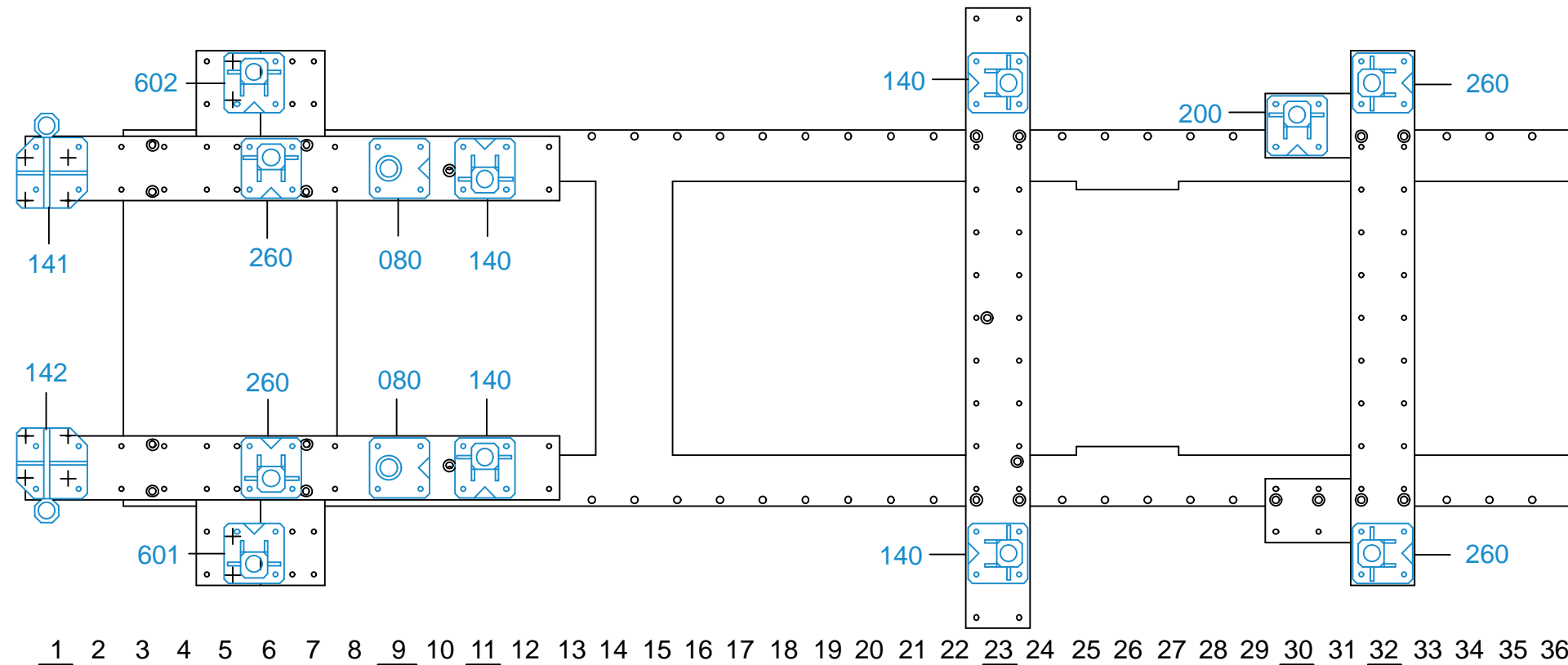


○ Avec ou sans mécanique
 With or without mechanical elements
 Con o senza parti meccaniche
 Mit oder ohne Aggregate
 Con ó sin mecanica desmontada



SUZUKI

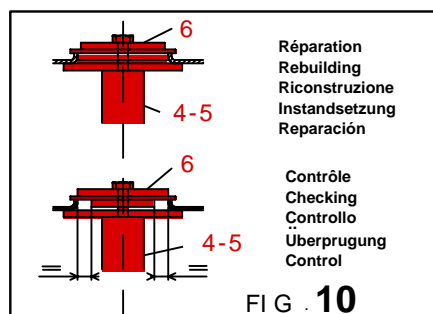
2523.500		
33 Kg	07.10.2008	445-D-13B
2523.500-RVA3-1		00



1 - 2 + 3	4 - 5 + 6	7 - 8	10 - 11 + 12	13 - 14
P160	P220	P160	P160	P160
D	H	F	E	E
MZ 141 / 142	MZ 601 / 602	MZ 260	MZ 080	MZ 140
FIG. 2	FIG. 3	FIG. 4	FIG. 5	FIG. 6

15 - 16
P100
B
MZ 140
FIG. 7

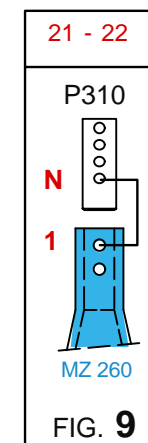
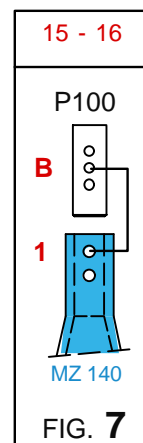
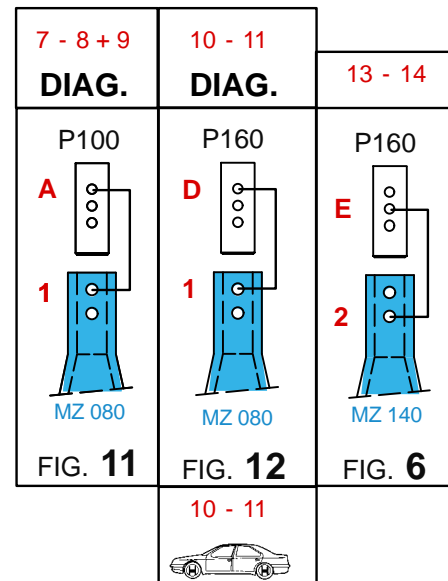
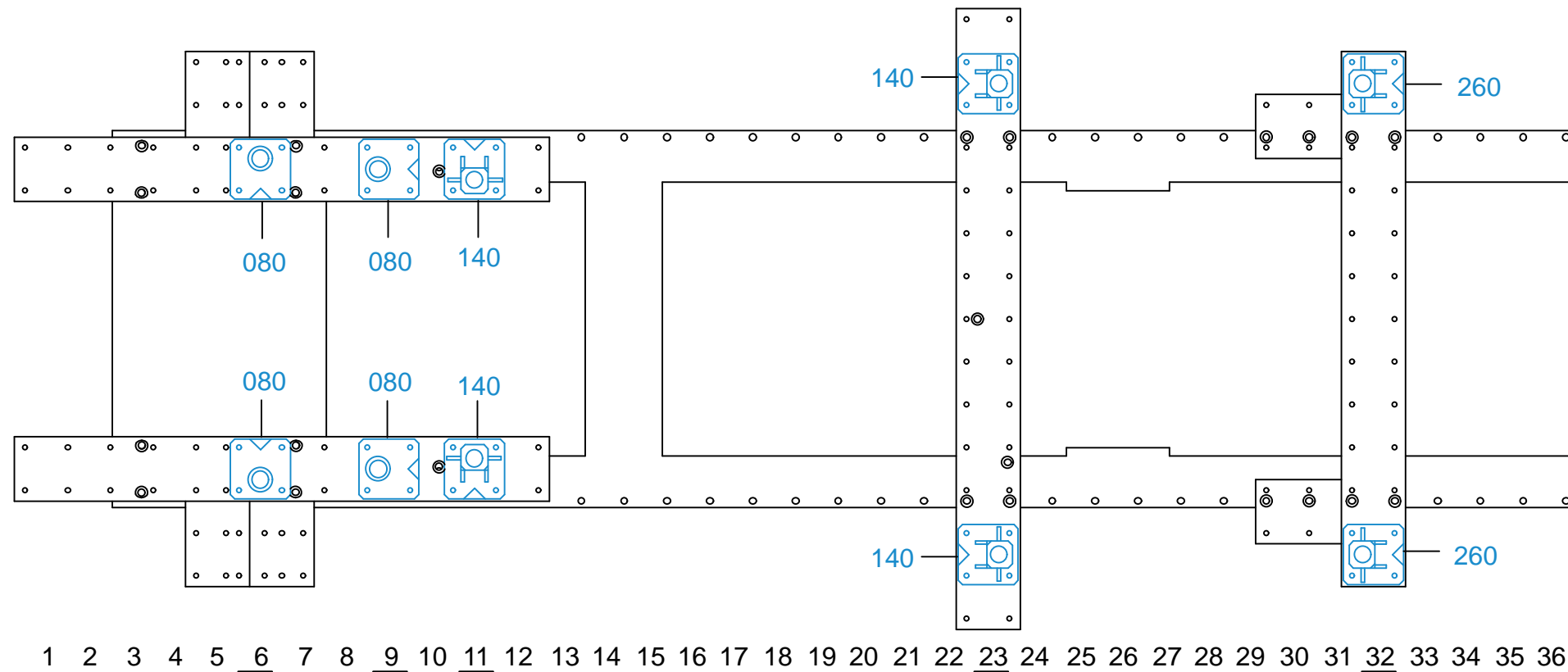
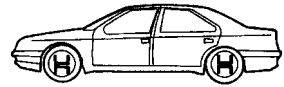
20	21 - 22
P100	P310
C	N
MZ 200	MZ 260
FIG. 8	FIG. 9



○ Avec ou sans mécanique
With or without mechanical elements
Con o senza parti meccaniche
Mit oder ohne Aggregate
Con ó sin mecánica desmontada

SUZUKI

2523.500		
33 Kg	07.10.2008	445-D-13C
2523.500-RVA3-2		00



○ Avec ou sans mécanique
With or without mechanical elements
Con o senza parti meccaniche
Mit oder ohne Aggregate
Con ó sin mecanica desmontada



SUZUKI

2523.500		
33 Kg	07.10.2008	445-D-13D
2523.500-RVA3-2		00