

REP.	REFERENCE	PDS	NB	MZ
1	2110.7001	2,4	1	140
2	2110.7002	2,4	1	140
3	2110.7003	1,7	1	260/080
4	2110.7004	1,7	1	260/080
5	2110.7005	0,9	2	
6	2110.7006	2,4	1	200
7	2110.7007	2,4	1	200
8	2110.7008	2,1	1	601
9	2110.7009	2,1	1	602
10	2110.7010	0,6	2	
11	2110.7011	2,0	1	140/080
12	2110.7012	2,0	1	140/080
13	2110.7013	0,05	2	
14	2110.7014	2,1	1	141
15	2110.7015	2,1	1	142
16	2110.7016	1,6	1	140
17	2110.7017	1,6	1	140
18	2110.7018	2,3	1	080
19	2110.7019	2,3	1	080
20	2110.7020	1,0	4	
21	2110.7021	2,2	1	200
22	2110.7022	2,2	1	200
23	2110.7023	1,6	1	140
24	2110.7024	2,7	1	260
25	2110.7025	2,7	1	260
	E35	0,1	2	

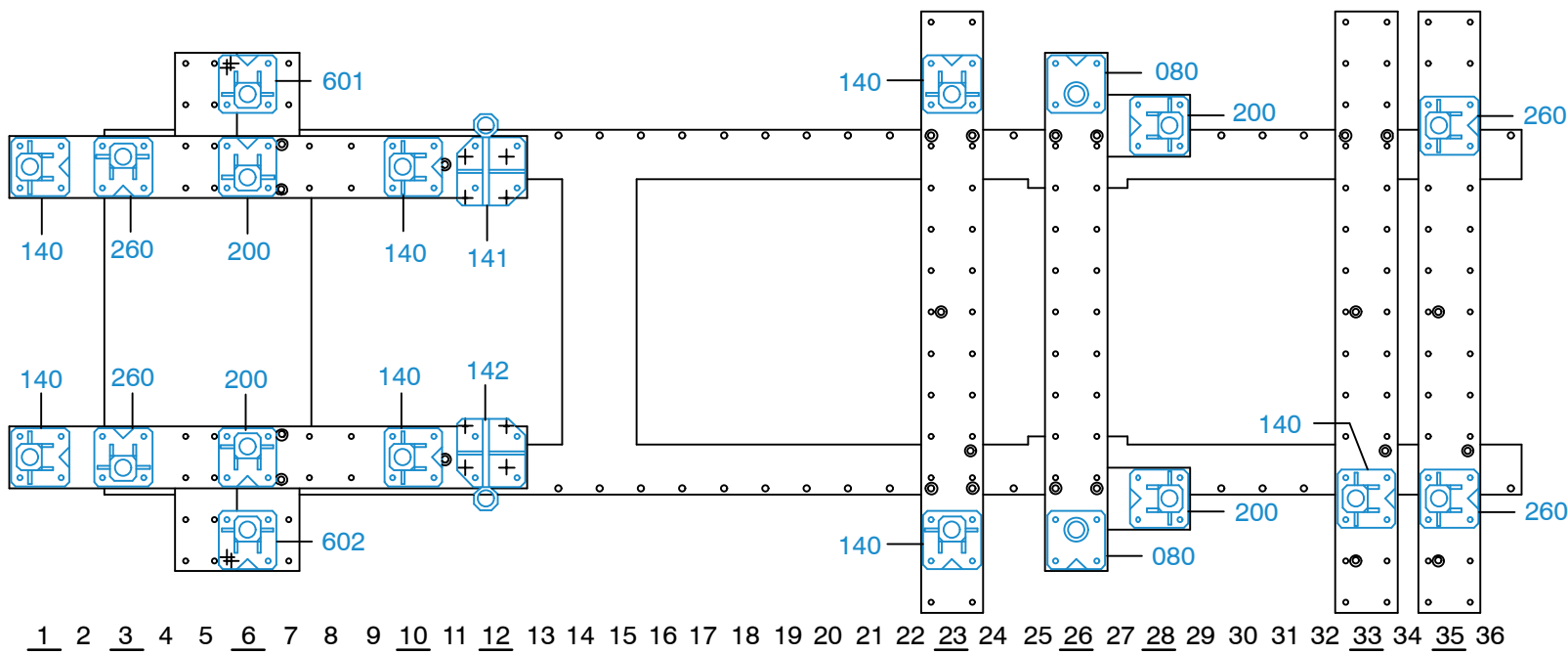
M 12-30	10
M 12-60	2
M 10x1,25-40	4
M 12x1,25-40	2
M 12x1,25-140	2

○ Avec ou sans mécanique
With or without mechanical elements
Con o senza parti meccaniche
Mit oder ohne Aggregate
Con ó sin mecanica desmontada

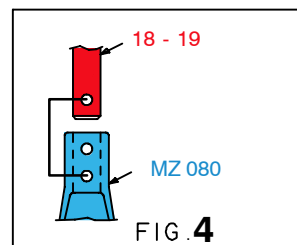
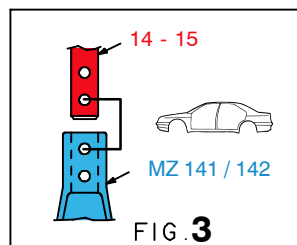
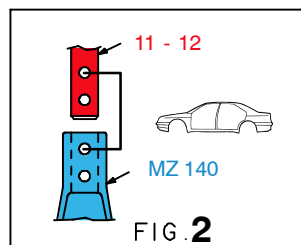
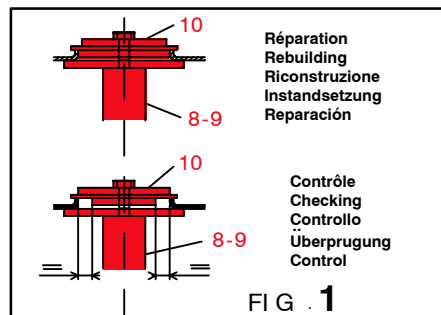
TOYOTA / DAIHATSU

2110.300

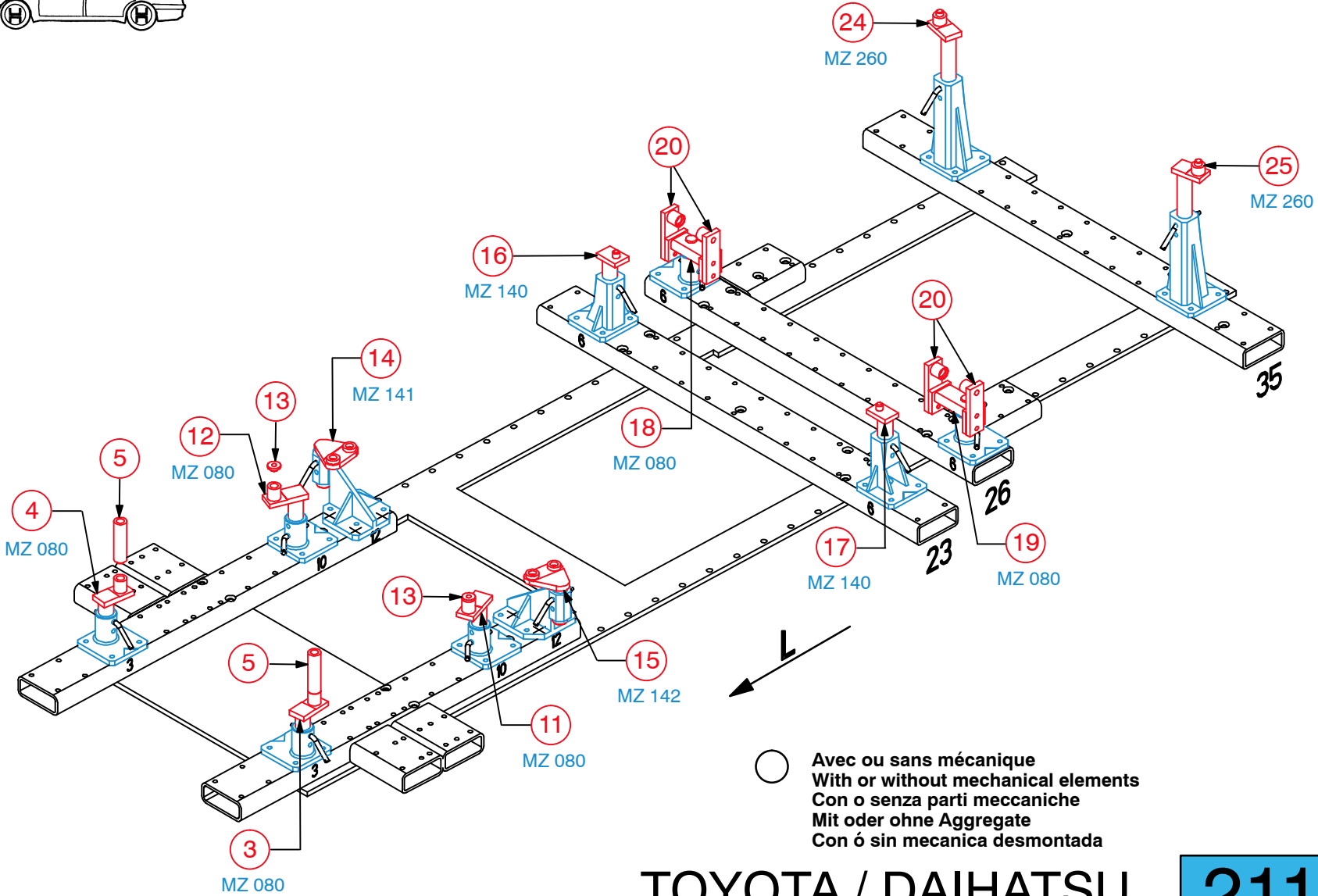
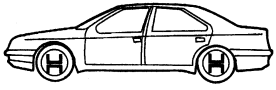
53 Kg 13.09.2007 434-D-87A



1 2 3 4 5 6 7 8 9 10 11 12 13 14 15 16 17 18 19 20 21 22 23 24 25 26 27 28 29 30 31 32 33 34 35 36



2110.300-RVA3-1 00



○ Avec ou sans mécanique
With or without mechanical elements
Con o senza parti meccaniche
Mit oder ohne Aggregate
Con ó sin mecánica desmontada

TOYOTA / DAIHATSU

2110.300		
53 Kg	13.09.2007	434-D-87B

