

○ Avec ou sans mécanique  
 With or without mechanical elements  
 Con o senza parti meccaniche  
 Mit oder ohne Aggregate  
 Con ó sin mecánica desmontada

REP.	REFERENCE	PDS	NB	MZ
31	2070.7031	0,1	2	
45	2070.7045	3,4	1	141
46	2070.7046	3,4	1	142
47	2070.7047	1,6	1	
48	2070.7048	5,7	1	260
49	2070.7049	3,2	1	601
50	2070.7050	3,2	1	602
51	2070.7051	1,4	1	140
52	2070.7052	1,4	1	140
53	2070.7053	2,3	1	080
54	2070.7054	2,3	1	080
55	2070.7055	2,5	1	140
56	2070.7056	2,5	1	140
57	2070.7057	2,2	1	200/140
58	2070.7058	2,2	1	200/140
59	2070.7059	2,8	1	601
60	2070.7060	2,8	1	602
61	2070.7061	1,9	1	260/200
62	2070.7062	1,9	1	260/200
63	2070.7063	2,9	1	260
64	2070.7064	2,9	1	260
65	2070.7065	0,01	1	

	M 6-50	2
	M 8-30	4
	M 10-25	2
	M 10-30	2
	M 12x1,50-60	4
	M 12x1,50-150	2
	M 6	2

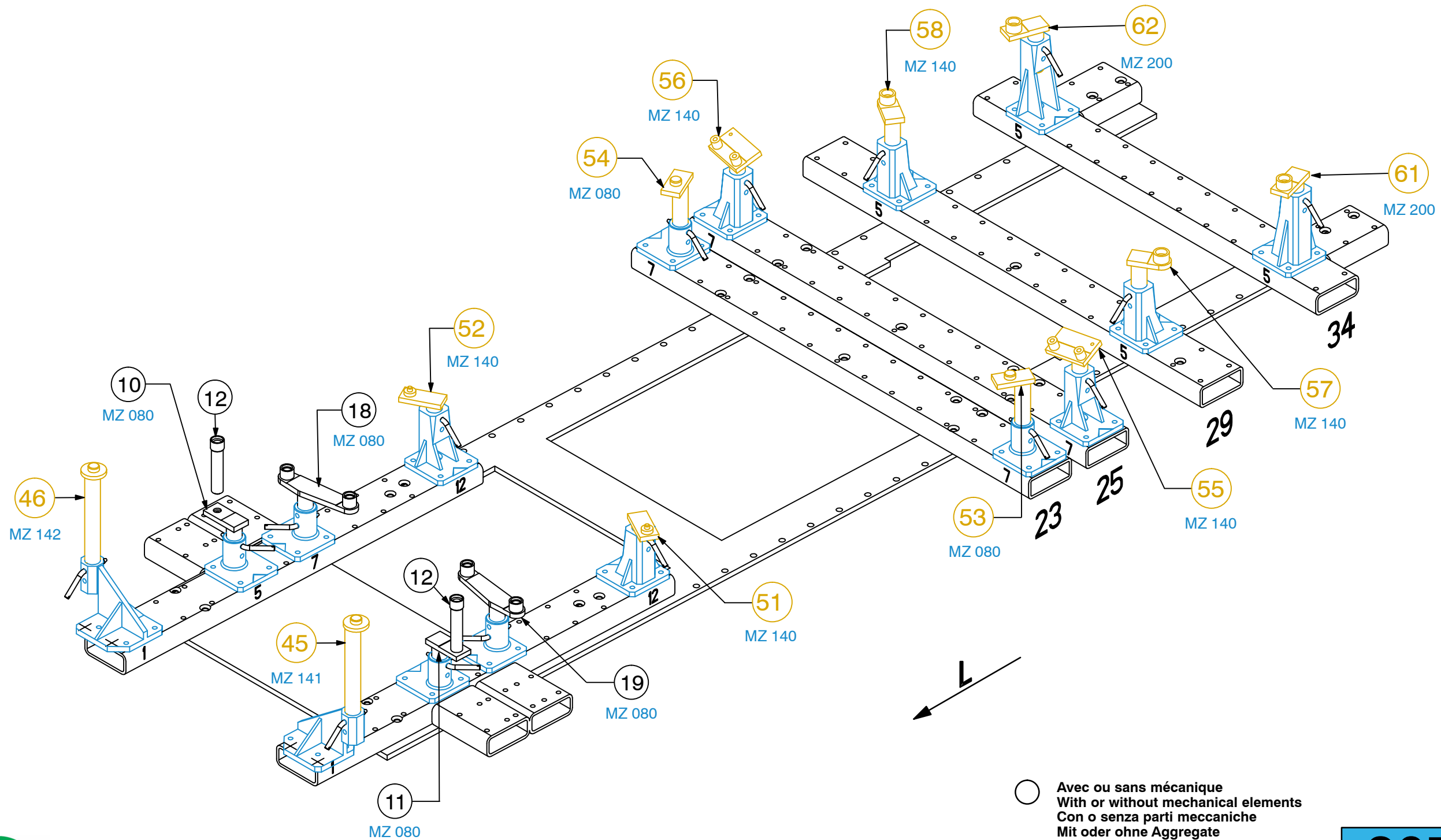
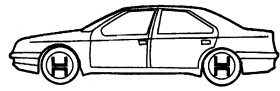
complément au  
 complementary set to  
 complemento al  
 zusätz zu **2070.300**

# 2070.309

54 Kg | 21.11.2007 | 438-D-31K

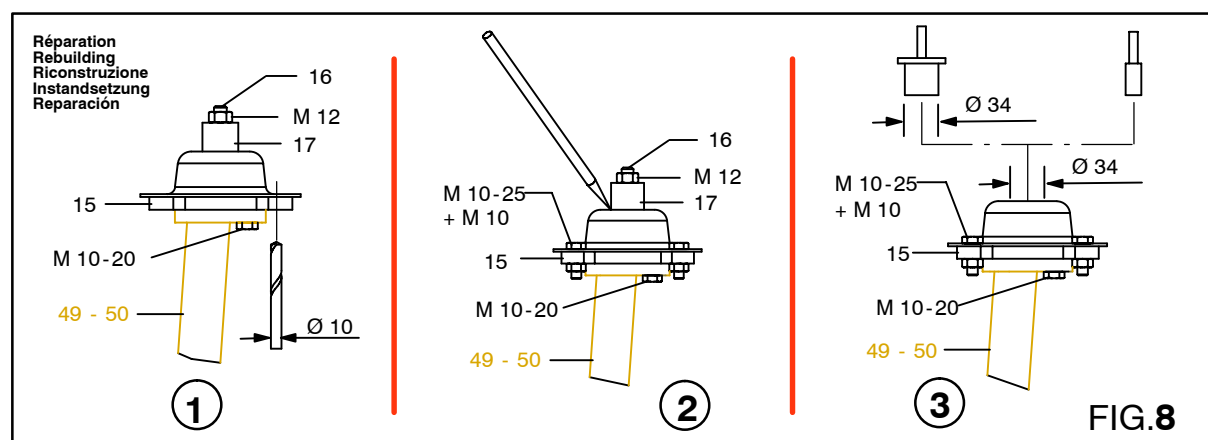
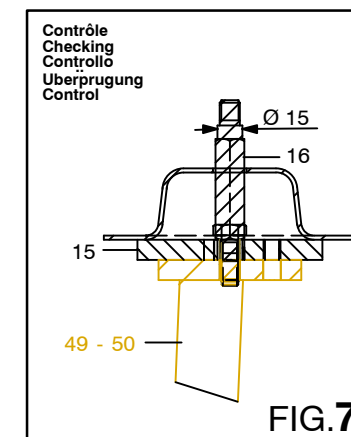
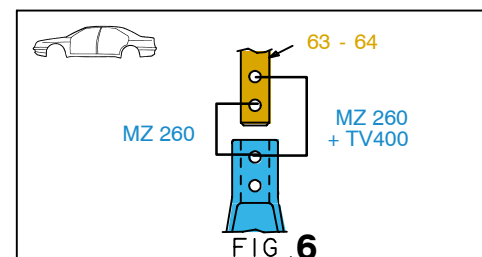
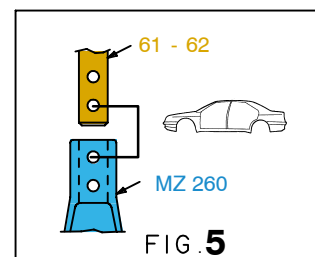
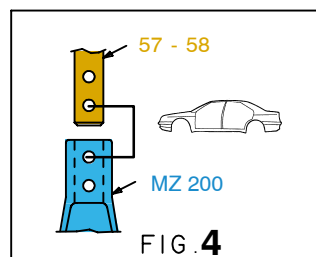
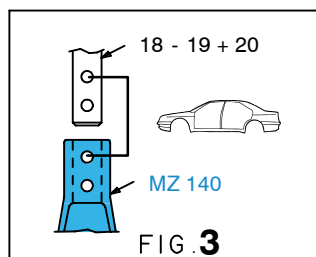
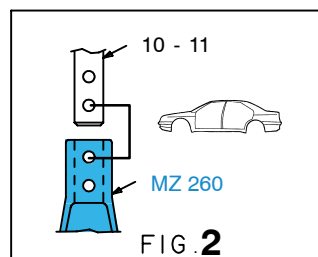
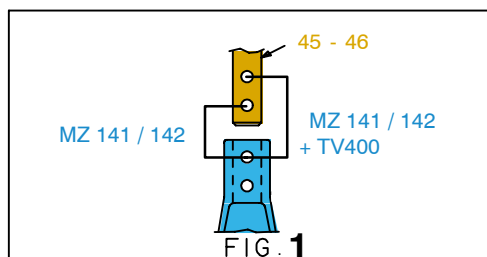
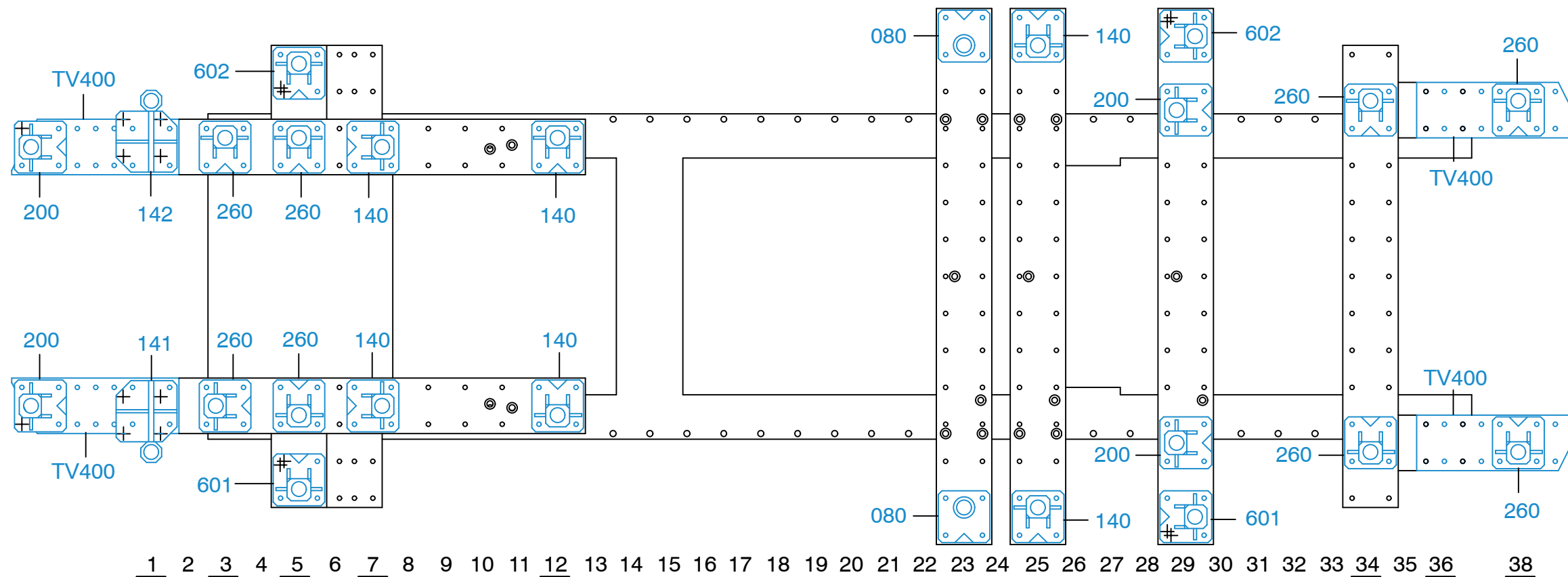
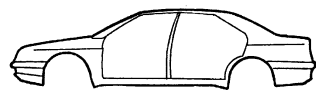
2070.309 - RVA3 - 1 | 00





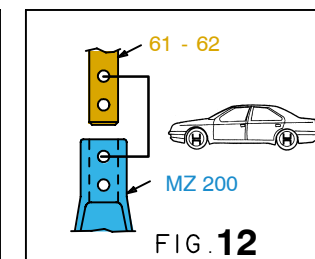
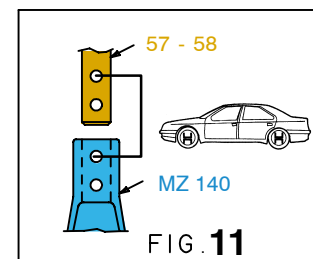
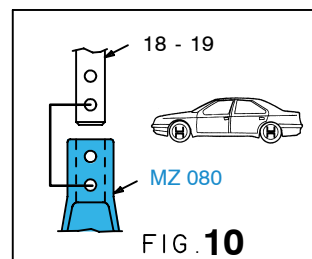
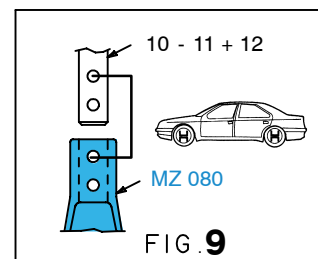
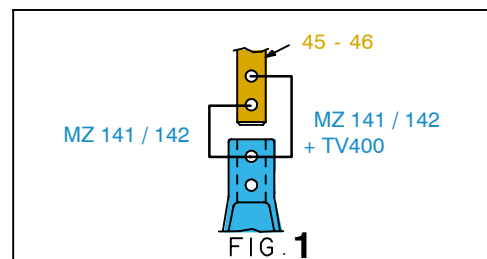
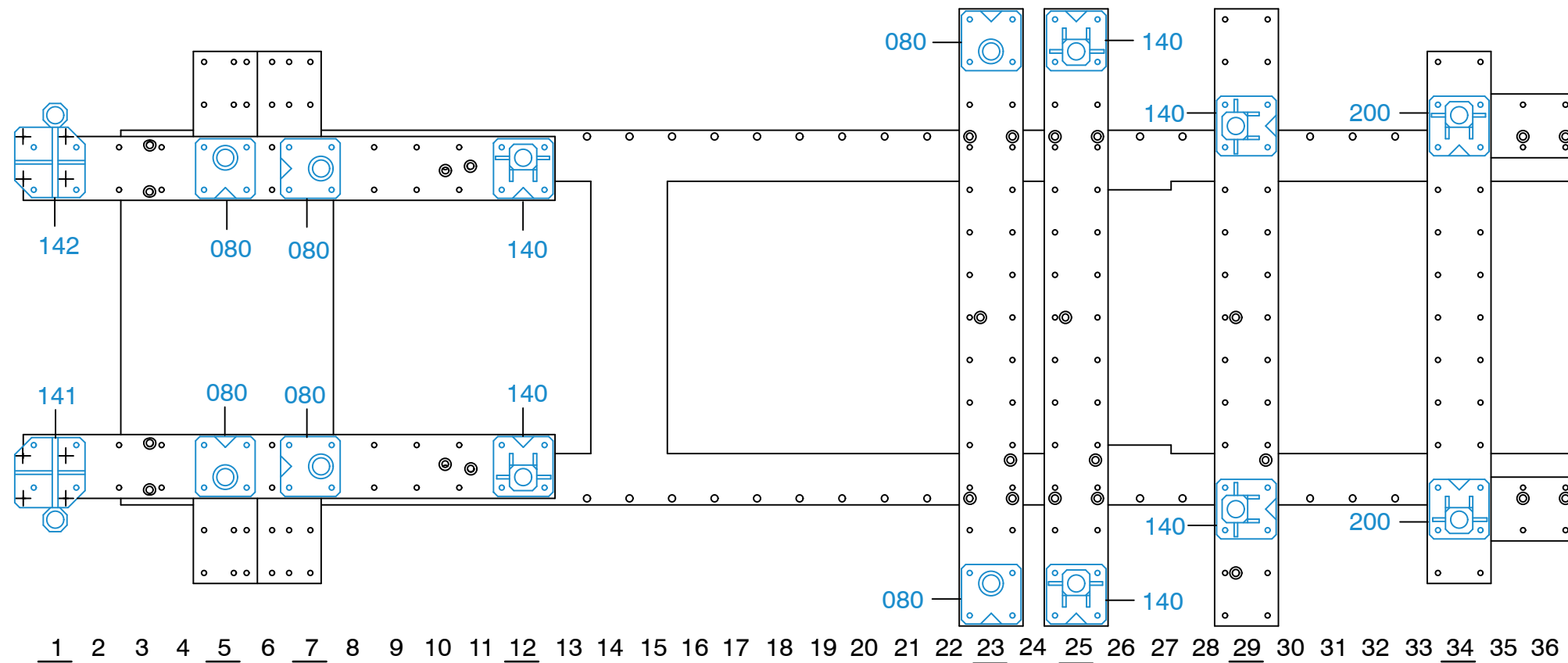
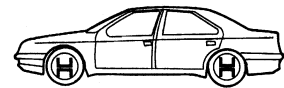
○ Avec ou sans mécanique  
 With or without mechanical elements  
 Con o senza parti meccaniche  
 Mit oder ohne Aggregate  
 Con ó sin mecánica desmontada





○ Avec ou sans mécanique  
With or without mechanical elements  
Con o senza parti meccaniche  
Mit oder ohne Aggregate  
Con ó sin mecánica desmontada





○ Avec ou sans mécanique  
 With or without mechanical elements  
 Con o senza parti meccaniche  
 Mit oder ohne Aggregate  
 Con ó sin mecánica desmontada



<b>2070.309</b>		
54 Kg	21.11.2007	438-D-31N
2070.309 - RVA3 - 2		00