

○ Avec ou sans mécanique
With or without mechanical elements
Con o senza parti meccaniche
Mit oder ohne Aggregate
Con ó sin mecanica desmontada

HYUNDAI

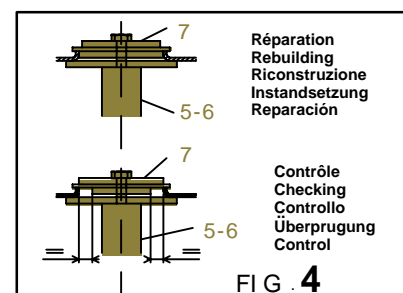
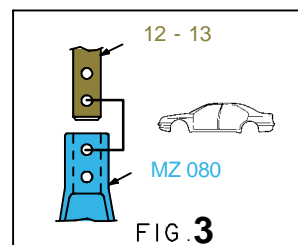
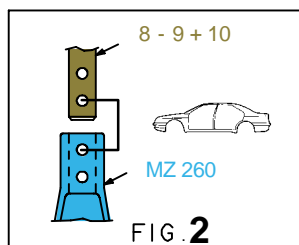
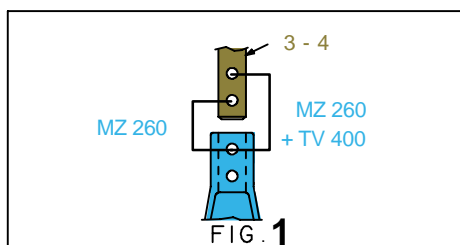
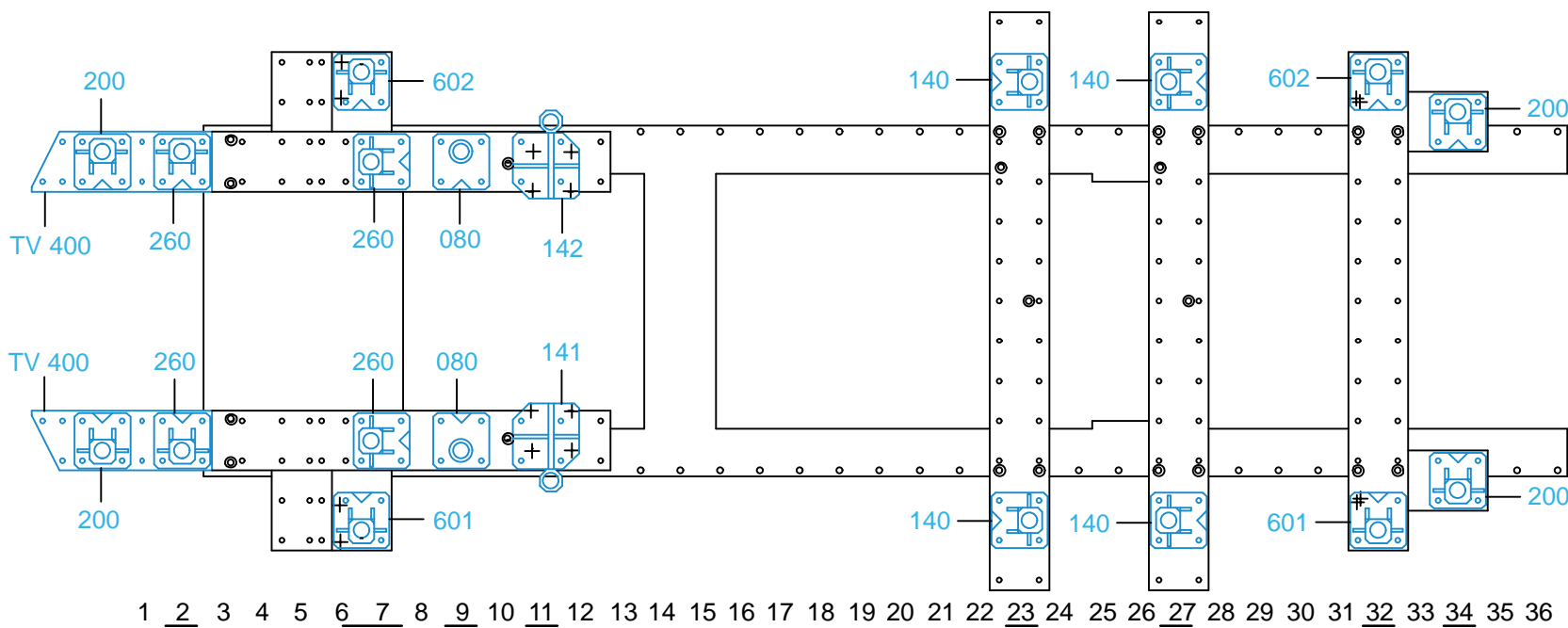
REP.	REFERENCE	PDS	NB	MZ
1	2031.7001	3,1	1	200
2	2031.7002	3,1	1	200
3	2031.7003	2,2	1	260
4	2031.7004	2,2	1	260
5	2031.7005	2,7	1	601
6	2031.7006	2,7	1	602
7	2031.7007	0,6	2	
8	2031.7008	2,0	1	260/080
9	2031.7009	2,0	1	260/080
10	2031.7010	0,2	2	
11	2031.7011	1,0	2	
12	2031.7012	2,2	1	080
13	2031.7013	2,2	1	080
14	2031.7014	1,6	1	142
15	2031.7015	1,6	1	141
16	2031.7016	2,0	1	140
17	2031.7017	2,0	1	140
18	2031.7018	2,6	1	140
19	2031.7019	2,6	1	140
20	2031.7020	2,0	1	602
21	2031.7021	2,0	1	601
22	2031.7022	2,8	1	200
23	2031.7023	2,8	1	200

M 8-60	4
M 12-16	2
M 12-30	2
M 14-20	2
M 12x1,25-35	4
M 14x1,50-60	2
M 14x1,50-90	2

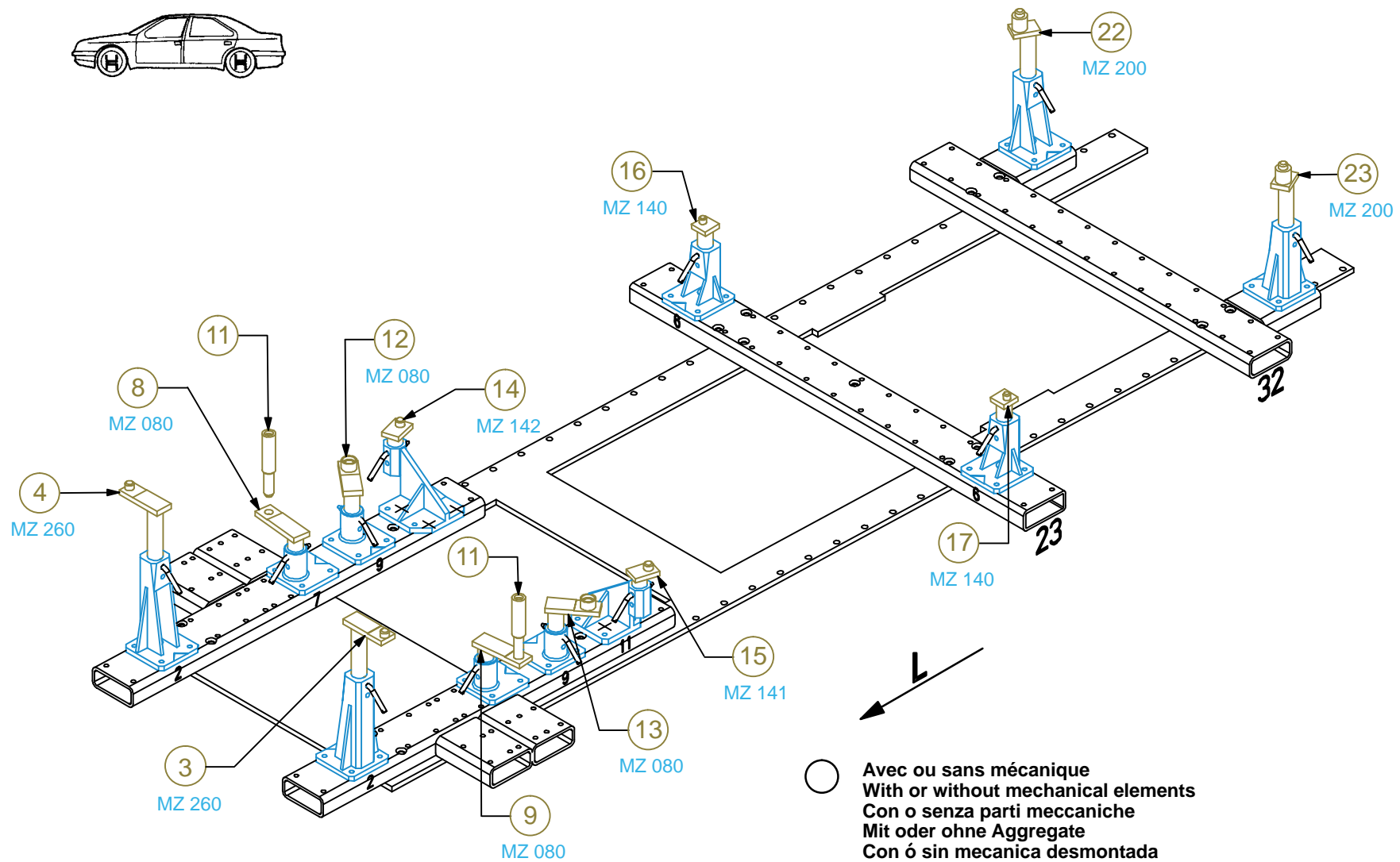
LU 12	2
MU 14	2

2031.300

52 Kg 08.12.2004 447-D-13A



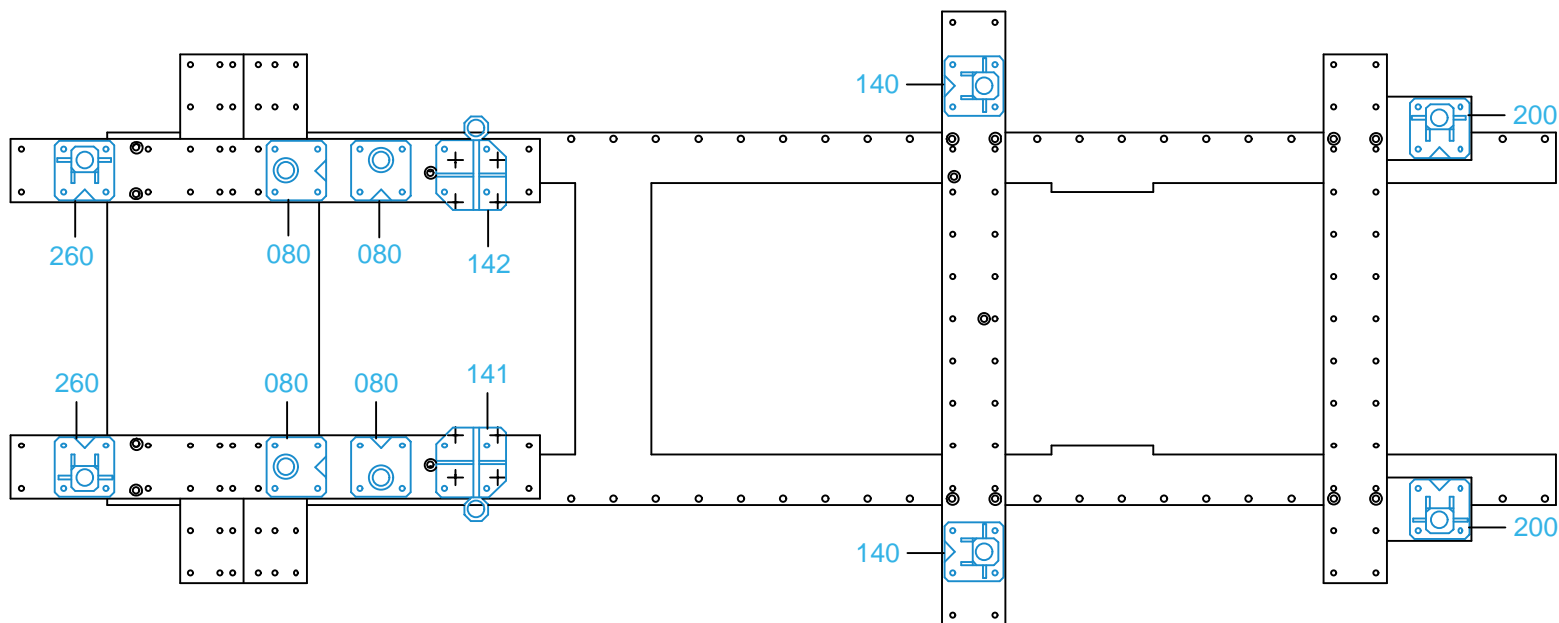
2031.300-RVA3-1 00



○ Avec ou sans mécanique
 With or without mechanical elements
 Con o senza parti meccaniche
 Mit oder ohne Aggregate
 Con ó sin mecanica desmontada

HYUNDAI

2031.300		
52 Kg	08.12.2004	447-D-13B



1 2 3 4 5 6 7 8 9 10 11 12 13 14 15 16 17 18 19 20 21 22 23 24 25 26 27 28 29 30 31 32 33 34 35 36

