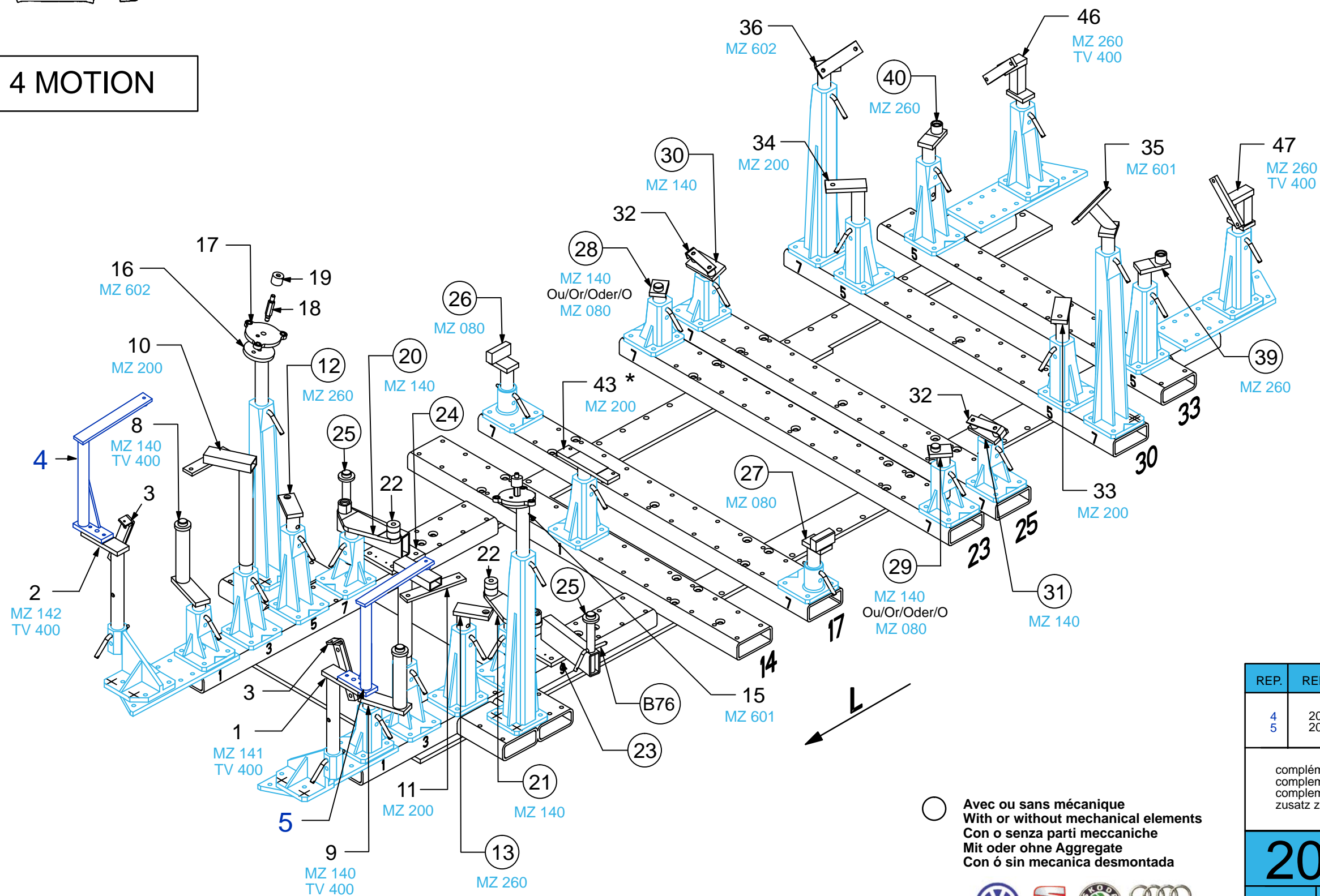




*** = 4 MOTION**

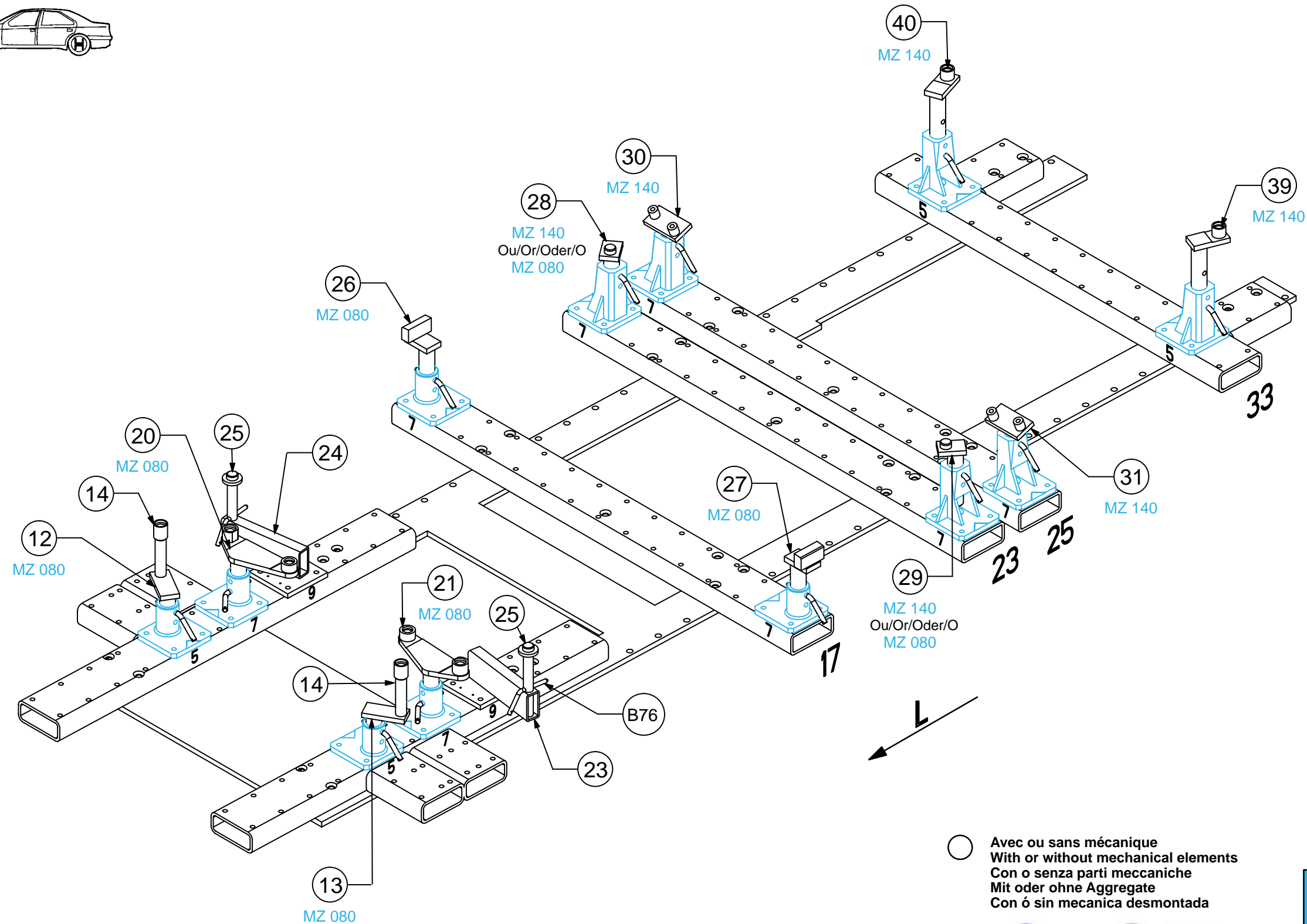


○ Avec ou sans mécanique
 With or without mechanical elements
 Con o senza parti meccaniche
 Mit oder ohne Aggregate
 Con ó sin mecanica desmontada

VAS 6240-2



REP.	REFERENCE	PDS	NB	MZ
4	2010.7004	2,5	1	
5	2010.7005	2,5	1	
complément au complementary set to complemento al zusatz zu				2010.300 + 2010.309
2010.308				
5 Kg	29.09.2003	438-D-26E		
2010.308-RVA3-1				00



○ Avec ou sans mécanique
 With or without mechanical elements
 Con o senza parti meccaniche
 Mit oder ohne Aggregate
 Con ó sin mecanica desmontada

VAS 6240-2

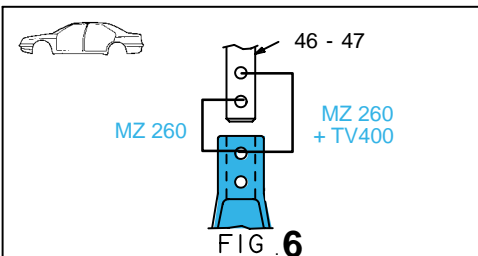
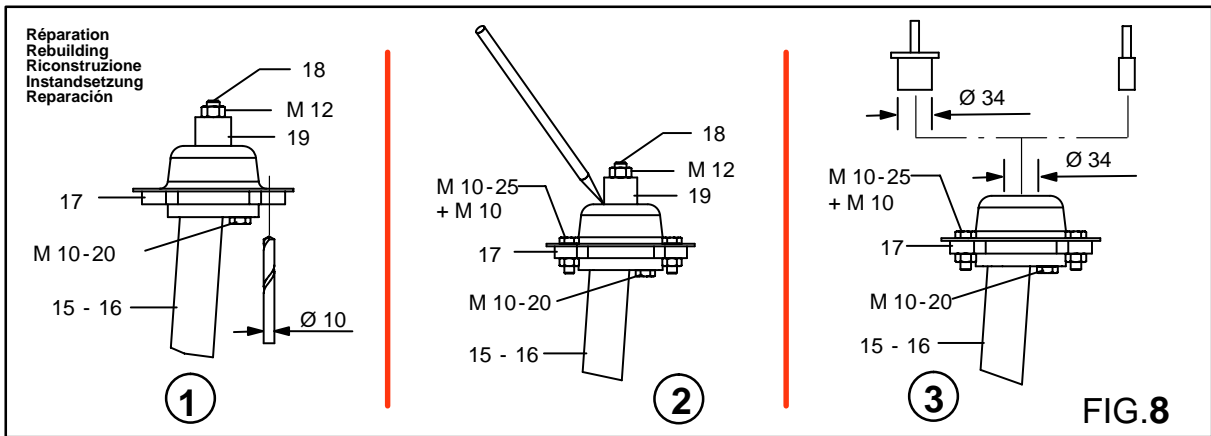
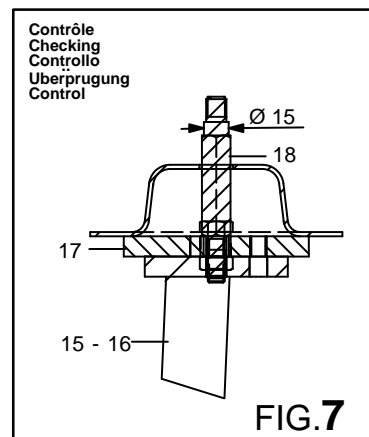
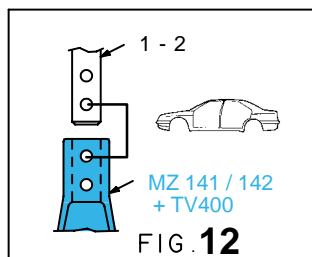
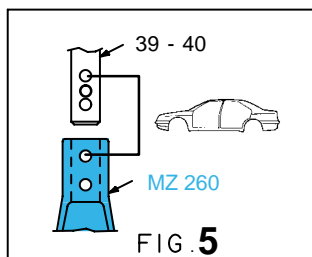
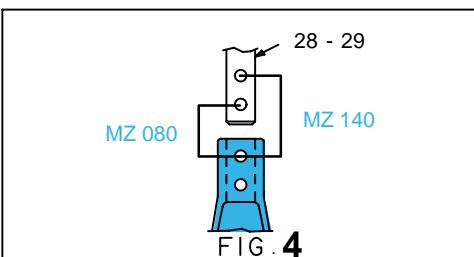
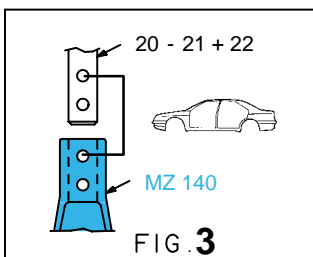
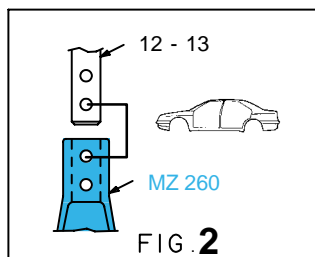
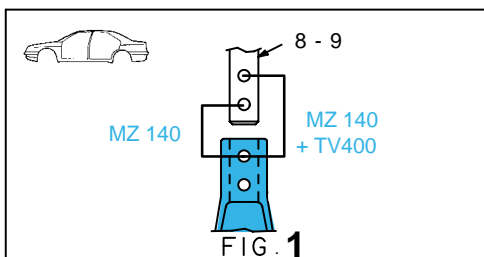
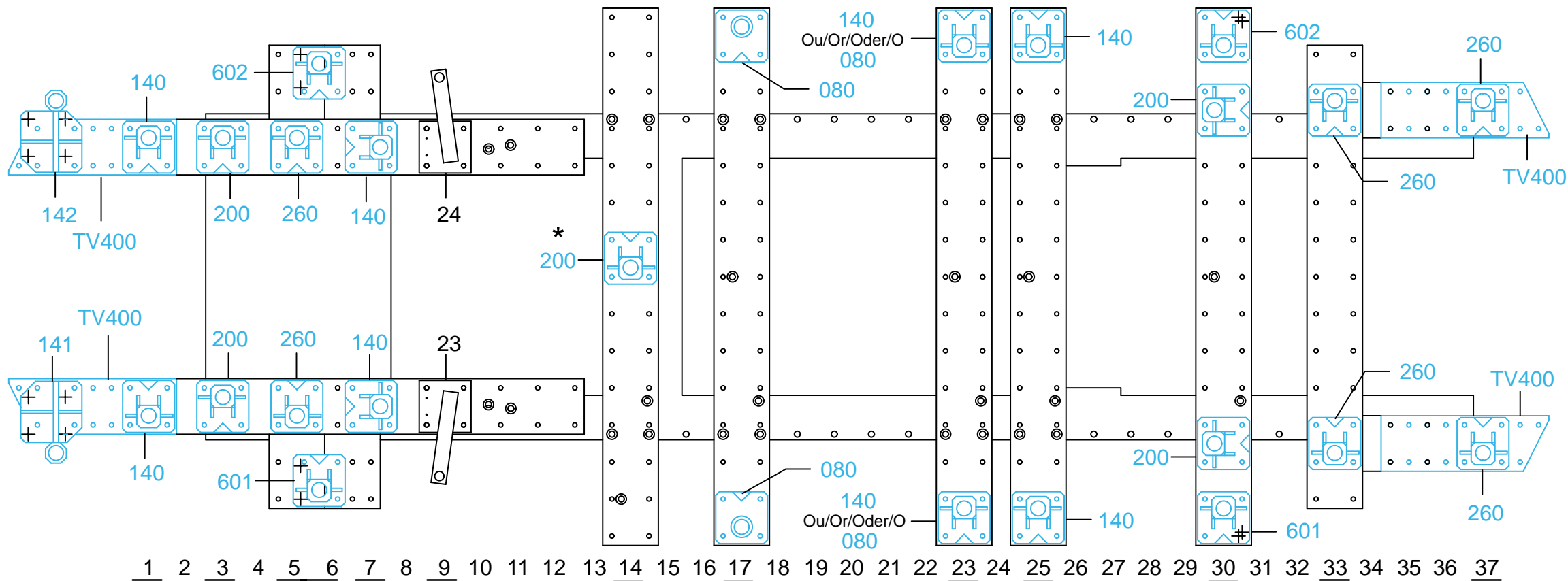


2010.308

5 Kg	29.09.2003	438-D-26F
2010.308-RVA3-1		00



*** = 4 MOTION**

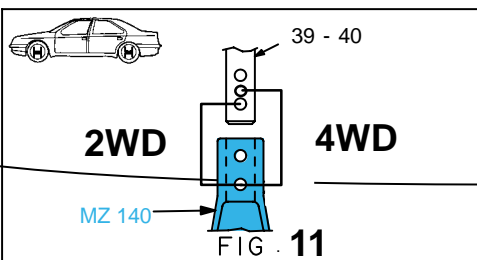
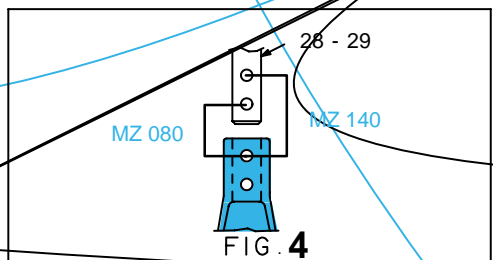
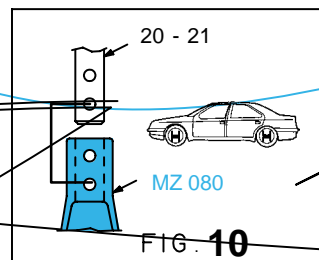
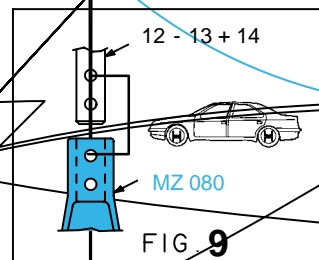
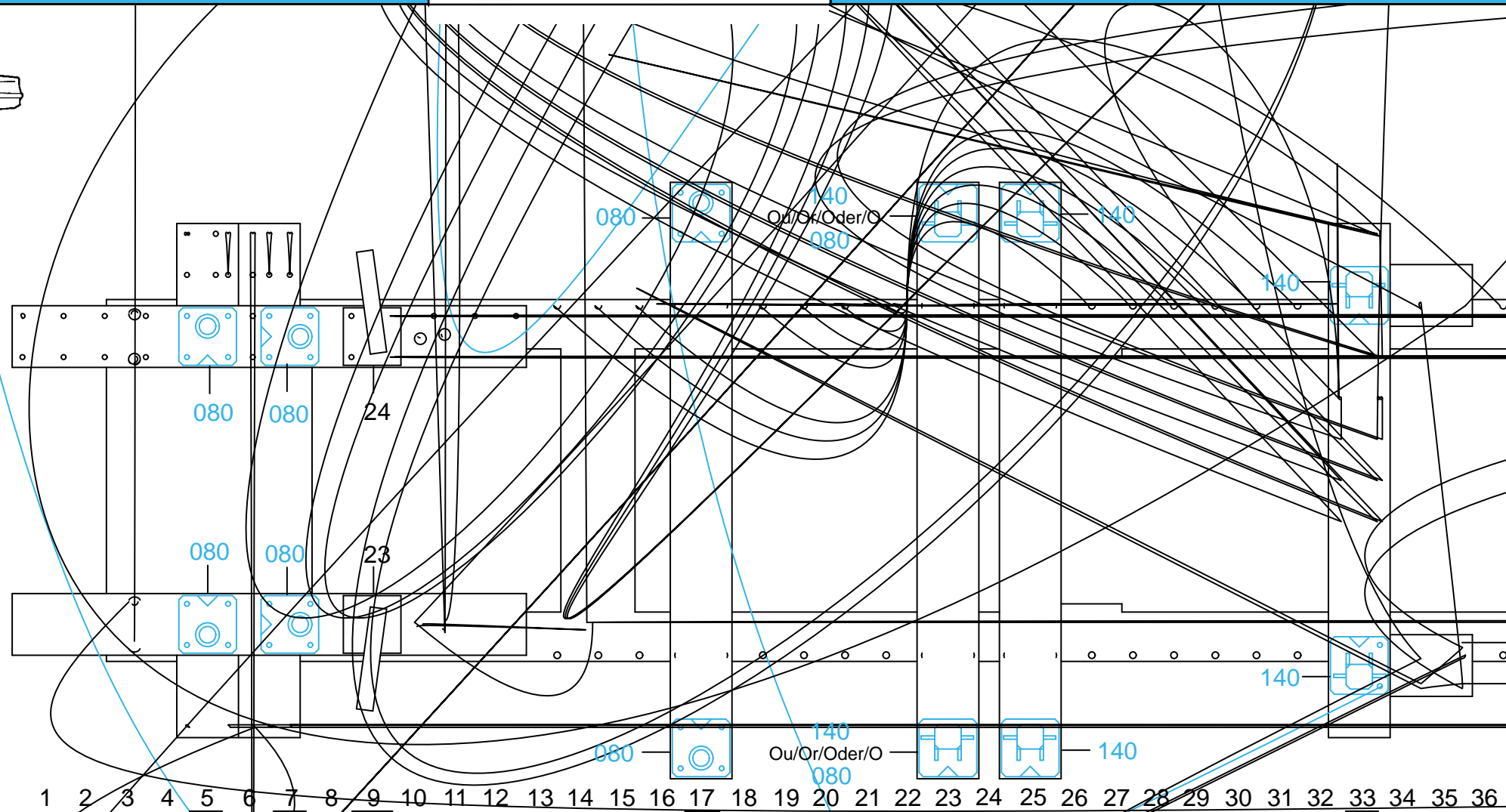
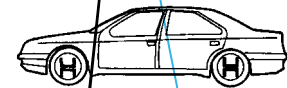


○ Avec ou sans mécanique
With or without mechanical elements
Con o senza parti meccaniche
Mit oder ohne Aggregate
Con ó sin mecanica desmontada

VAS 6240-2



2010.308		
5 Kg	29.09.2003	438-D-26G
2010.308-RVA3-2		00



○ Avec ou sans mécanique
 With or without mechanical elements
 Con o senza parti meccaniche
 Mit oder ohne Aggregate
 Con ó sin mecanica desmontada

VAS 6240-2

2010.308		
5 Kg	29.09.2003	438-D-26H
2010.308-RVA3-2		00